

# The Villager

A Magazine for Avening,  
Cherington and Nags Head

**April 2026**

*[editors@villagemag.online](mailto:editors@villagemag.online)*



t. 01666 505068  
e. [tetbury@hunterfrench.co.uk](mailto:tetbury@hunterfrench.co.uk)  
w. [www.hunterfrench.co.uk](http://www.hunterfrench.co.uk)  
2 London Road, Tetbury, GL8 8JL



*Are you following us?!*

Tetbury based, independent Estate Agency offering a friendly, yet professional and reliable service to house selling and purchasing.

Experience the Difference...



# April 2026

Many people living in Avening Cherington and Nag's Head have had interesting lives and done exciting things - but most of us are completely unaware of what our neighbours were up to in the past. So it was lovely to hear from Ann Tarlton and her friends, who sent us an account of Ann's life, including her work with the BBC, during which she met some fascinating and famous people. You can read all about it on page 28. Thank you so much, Ann.

It reminded us that we used to run an occasional column called 'Village People', in which people told us about their lives. As Ann's friend Kate points out "it's so nice to do this while they are with us, not just in obituaries, so that they can feel validated and also people can chat to them about what they have read." If you want to nominate a friend, relative or even yourself as a candidate for this column, please let us know. You don't have to have had a life as exciting as Ann's - everyone has a story to tell. You can write it yourself or one of us will have a chat and write it for you.

We look forward to hearing from you!

***The Villager Editors***

## The Villager Magazine

**Editors** Jane Archer (07812 137161), Derrick Pierce (07762 702982)  
and Gill Lelliott (07794 324682)

**Advertising** [editors@villagemag.online](mailto:editors@villagemag.online) Gwyneth Simpson 01453 836556

**Deliveries** Cas Boddam-Whetham 07900 472999

**Deadline** 18th of each month

Read online at [www.avening-pc.gov.uk](http://www.avening-pc.gov.uk)

## Photographs in The Villager Magazine

Many thanks to **Jane Archer** for this month's cover photo. Please keep sending us your photographs, especially since all the images will be in colour in the downloadable version of the Magazine.

[editors@villagemag.online](mailto:editors@villagemag.online)

*The Editors do not guarantee the accuracy of the information contained in this publication or accept responsibility for errors or omissions or their consequences. Opinions expressed by contributors to this publication are not necessarily those of the Editors.*

# Contacts for the Villages

Amberley, Avening & Cherington Churches Parish Priest	Natalie Jennings	associate @minchchurch.org.uk
Avening & Cherington Churches Reader	Derrick Pierce	01453 835090
Avening Bell Tower Captain	Andrew Lelliott	07726 345516
Avening & Cherington Cricket Club	Secretary: Sarah Smith	07747 588188
Avening Church Churchwardens	Stephanie Hamilton	07796 981308
Avening Church Flower Team	Gill Adams	01453 833175
Avening Church PCC Treasurer	Diane Martin	dianenmartin59@gmail.com
Avening Cinema Club	Sue or Rima	sjeskins@gmail.com
Avening Community Café	Gill Adams	07826 291759
Avening Community Orchard	aveningcommunityorchard@gmail.com	
Avening Memorial Hall	David Bendall	01453833479
Avening Oil Coordinator	Frances Lindley	flndly4@aol.com
Avening Parish Council Clerk	Shani Baker	07415 039234
Grumbolds Ash with Avening District Councillor	Tony Slater	07793 669930
Avening Playgroup	Angie Heslop	01453 832695
Avening Primary School	Jane Rushton	01453 833191
Avening Silver Band	John Hall	07825405124

Avening Social Club	Derrick Ind	01453 835752
Avening Singers	Derrick Pierce	01453 835090
Avening WI	Liz Knowles	01453 833803
Cherington Village Hall	Sarah MacMahon	07443629780 sarahmacmahon10@ googlemail.com
Cherington Parish Council Clerk	Barbara (Babs) Maloney	Cheringtonparishcouncil @yahoo.co.uk 01285760276
Cherington Church Churchwarden	Helen Di Mauro	07796 937268
Cherington Church Flower Team	Elizabeth Workman	01285 841294
Cherington Church Organist	Elizabeth Workman	01285 841294
Cherington Church PCC Secretary	Elizabeth Workman	01285 841294
Cherington Church PCC Treasurer	Ian Bamber	idbamber@gmail.com
Friends of Avening School	Nicky Dill	01453 833191
Stroud Hospital	Reception	0300 421 8080
Tetbury Hospital		01666 502336

## **VILLAGE & AREA WEB SITES**

**Avening Parish Council: [www.avening-pc.gov.uk](http://www.avening-pc.gov.uk)**

**Cherington Parish Council: [cheringtonpc.org.uk](http://cheringtonpc.org.uk).**

**Cherington Village: [www.cheringtonvillage.co.uk](http://www.cheringtonvillage.co.uk)**

**Cotswold District Council: [www.cotswold.gov.uk](http://www.cotswold.gov.uk)**

**Facebook: Avening    Instagram: #aveningvillage**

# Gilian's Poem of the Month

## April Skies

The April day dawns misty, 'neath skies of primrose hue,  
Then, as the sun begins to rise, it changes to milky blue.  
As dawning becomes morning mist melts from a sky deep blue,  
But high above, white, fluffy clouds give hints of what is due!  
Sun's welcome warmth, this April day, now blesses the wakening earth,  
But on the far horizon dark clouds are marching forth,  
Preceded now by sullen skies, as brightness fades and dims,  
And soon great purple storm clouds roll inexorably in.  
By midday sunshine's swiftly cloaked, veiling all the light,  
And suddenly sharp rain pours down with ever increasing might.  
It pounds the earth in frenzy — then quickly loses power,  
Turning now from tempest, to just a passing shower!  
A shaft of light breaks through the clouds, sweeping them all away,  
And sunlight floods the earth again — all in a single day!  
But wait! A glorious rainbow now appears across the skies,  
It's colours are so bright and clear, a wonderful surprise!  
It fades away as evening falls, and sun sinks in the west,  
The sky now tinted rosy red as day draws to its rest.  
And so, in one single April day the sky flaunts all her tricks.  
One thing's for sure—the April skies are an ever-changing mix!

*Gilian Bulmer-Davison*

## Puzzle Corner

### Sudoku

Fill in the blank squares so that each row, each column and each 3-by-3 block contain all of the digits 1 - 9. If you use logic you can solve the puzzle without guesswork.

**Answers on page 38**

2	6			7			5	
	5	3		2	6	7	1	9
		1				8		
6		4			2			7
	7						4	
3			6			1		5
		6				2		
1	2	7	3	9		5	6	
	8			6			7	4

© 2013 KrazyDad.com

# Dates for your Diary

Come along and join in the fun at any of the events below - everyone is always welcome! Both the Memorial Hall & Social Club can also be hired for private functions

Date	Event	Location	Time
Friday 17th April	WI Quiz Night	Avening Social Club	7pm for 7.30pm
Sunday 19th April	Avening church Annual Meetings	Holy Cross Church, Avening	5pm
Wednesday 29th April	Cherington Church Annual Meetings	Cherington Village Hall	6 — 8pm
Tuesday 28th April	Litter Pick	Avening Social Club - with Community Café	9.30 am
Sunday June 7th	Church Fete and Art Show	Holy Cross Churchyard	tba

## *Nailsworth Domestic Appliance Repairs*

*A reliable, fast & friendly service*

*Washing Machines,*

*Dishwashers,*

*Tumble Dryers,*

*Fridge-Freezers,*

*Electric Cookers . . .*

*No Call-out Charge*

*01453 ~ 833310*

# Avening and Cherington Churches



It feels as though getting from A to B has become unexpectedly challenging lately. At the time of writing, a large stretch of Cirencester Road is closed during weekdays for resurfacing, and everywhere I go I seem to encounter road closures, temporary traffic lights, and potholes I'm trying to swerve around. Familiar routes that once seemed simple have suddenly become rather more complicated.

No, this isn't a complaint to the council. But it has made me think about journeys – and how they rarely turn out exactly as we expect. Life can often feel like this, when the route we planned suddenly changes and the journey becomes slower or more complicated than we imagined.

This month, Christians will be celebrating Easter – the day that Jesus rose from the dead. It's the joyful, triumphant highlight of the church's year. But what is sometimes forgotten is that the road to Easter isn't a straightforward or particularly joyful one. The story we walk through Holy Week – the week before Easter – leads through betrayal, injustice, suffering, and death before it reaches the empty tomb.

The first Easter morning didn't begin with celebration. It began with grief and confusion. The women who went to the tomb weren't expecting a miracle; they were simply continuing a sad but necessary journey, carrying spices to complete the burial of someone they loved. As far as they knew, the story had ended.

And yet, in that place of sorrow, something unexpected happened. The stone was rolled away. The tomb was empty. The ending they thought they understood turned out not to be the end of the story at all.

For Christians, Easter is the ultimate reminder that even when life seems at its darkest, hope and new life can still appear in surprising ways. The Christian faith doesn't pretend that life is always smooth or straightforward. But it does hold onto the hope that God is present with us along the road – even in the confusing or painful parts of the journey – and that new life can emerge in ways we don't expect.

So if the roads feel a little frustrating at the moment, perhaps they can also serve as a reminder that the road to Easter was not a smooth one either. It passed through dark and difficult places, around obstacles, and sometimes seemed to have come to a sudden stop.

But the Easter story reminds us that difficult journeys are not always the end of the story. Somehow, love and life have the final word.

With every blessing,

***Revd Natalie Jennings***

P.S. in future editions of The Villager, the pastoral letter will come from either myself, Revd Canon Howard Gilbert (our Rector) or Revd Tracey Clements (Curate in Minchinhampton). I hope you'll enjoy hearing from a variety of voices in future!

## Church Services

	Avening	Cherington
<b>Thursday 2<sup>nd</sup> April (Maundy Thursday)</b>		5pm – Holy Communion
<b>Friday 3<sup>rd</sup> April (Good Friday)</b>	2pm – Tenebrae Service	
<b>Saturday 4<sup>th</sup> April (Holy Saturday)</b>	9pm – Easter Vigil Service at Minchinhampton	
<b>Sunday 5<sup>th</sup> April (Easter Day)</b>	10am – Holy Communion	10am – Holy Communion
<b>Sunday 12<sup>th</sup> April</b>	10am – Holy Communion	
<b>Sunday 19<sup>th</sup> April</b>	6pm – Evening Prayer (following the APCM at 5pm)	10am – Holy Communion
<b>Sunday 26<sup>th</sup> April</b>	10am – Holy Communion	
<b>Sunday 3<sup>rd</sup> May</b>	10am – Morning Prayer	4pm – Reflective Ramble



### Church Floodlighting

The church looks beautiful at night when floodlit. If you would like to have this in memory of a loved one, or to celebrate a special event, contact **Nicholas Winkfield** on **07885 139275**.

The cost is £10 for 2 hours.



### Donations to Avening Church

Donations towards the upkeep and running of Avening Church can be made at any time either by using the QR code here or on the card machine just inside the church door.

# Annual Church Meetings

Each year our churches hold their **Annual Vestry Meeting** (to elect the Churchwardens) followed by the **Annual Parochial Church Meeting (APCM)**, when we reflect on the life of the church over the past year, receive reports, and elect members of the Parochial Church Council (PCC).

All are warmly welcome to attend.

Those on the Church Electoral Role may vote at the APCM.

.....



## **Church of the Holy Cross, Avening**

**Sunday 19<sup>th</sup> April, 5.00pm - Holy Cross Church**

The Annual Vestry Meeting and APCM will take place in church at 5pm, and will be followed by **Evening Prayer** at 6pm.



## **St Nicholas' Church, Cherington**

**Wednesday 29<sup>th</sup> April, 6.00-8.00pm -  
Cherington Village Hall**

### **6.00pm – Refreshments and conversation**

An opportunity to gather, share ideas, and reflect on the life of the church.

### **6.45pm – Looking ahead**

A conversation about our pattern of worship and the life of the church in Cherington.

### **7.00pm – Annual Church Meetings**

The formal Vestry Meeting and APCM

.....

There are currently vacancies for Churchwardens and PCC members at both churches. These are important roles in supporting the worship, mission, and practical life of the church. If you would like to know more about what these roles involve, please speak to Rev Natalie Jennings or one of the current Churchwardens.



# Avening School

## Soaring into the Summer Term



It's been an exciting spring term at Avening School with one of the highlights of our school calendar, World Book Day taking place on the 5th March.

This year, the school transformed 'Into the Forest' as we celebrated stories and literary characters linked to a woodland environment. Pupils who wanted to dress up came as a vast array of characters from foxes to Robin Hoods, from fairies to Stick Man.

Each class focused on a different book for the day's activities and we had a very exciting visit from Walks with Hawks who brought in a kestrel and three owls for the children to meet and learn about. A wonderful day was had by all.

Before the Easter holidays, the Hawks class will be visiting Slimbridge Wetlands Centre as part of their recent focus on Rivers and

Mountains, during which they will take part in a plastic pollution workshop.

There has been lots of sports activity recently with netball and tag rugby tournaments at local schools in addition to after school clubs each week.

There is so much to look forward to as we approach the end of term with our annual school talent show, an Easter bonnet parade and an egg hunt all on the last day before the holidays.

Looking ahead, we have an action-packed summer term to look forward to after the Easter break with plenty of outings and events in the diary.

**Alex Adcock**

*For more information about this busy place of learning, please see our school website:  
[www.avening.gloucs.sch.uk](http://www.avening.gloucs.sch.uk)*



# Letter from Chairman of Avening Parish Council



At last, the daylight hours are longer than the night hours. Everything in the garden is poised and ready to light up the days ahead with new shoots of life that precede the full blossoms and colours of Spring. Similarly, the Parish Council also have planned some pending improvements that are about to reveal themselves to the benefit of whole community. As they say at the Oscars, these are: -

**Playing Field:** We have ordered and have received four new Park Benches to replace some of the old and damaged wooden ones that are currently in place. The new benches are made from recycled plastics, not only should they have a long life span, but also be largely vandal proof. (That is not a challenge, should anyone be tempted!)

**Memorial Hall:** Over the past two years, the Parish Council in conjunction with the Hall Trustees have prudently accumulated funds to maintain and improve the hall and its facilities. This has been most evident with the replacement of the roofs over the hall and the Chamberlain room. The next phases, which will hopefully be completed during the Easter school holidays, will be the redecoration and installation of new kitchen equipment and cupboards in the Chamberlain Room. This will also include new extras such as a dishwasher and a selection of cups, saucers, plates and cutlery for community use, and if needed, when the hall is hired out for private functions. The exterior doors leading directly into the Chamberlain Room will also be replaced, of a similar design, but in UPVC for extra durability. During the same Easter holidays, we have booked a qualified builder to inspect the hall floor to determine if it needs to be repaired or replaced – the result can then be factored into our future financial planning. The cry has frequently been heard: “can we have some comfortable seats.” We are actively looking at various chairs that are on the market and will build that into our plans. Providing funds are available, new chairs will be a priority; not just new ones, but comfortable ones – no-one likes a ‘numb bum’.

The monies spent on the hall projects have largely been raised by self-funding, plus additions from public grants and hall users; my thanks to Avening W.I. for their contribution. The expenditure on the hall, which to remind everyone is over a hundred years old, will enable it to be a valuable and treasured village asset well into the future. An important part of that future is being an integral part of the future of Avening Primary School and the children of the village.

**The ‘New Library’ Kiosk:** I’m told that the library is proving its worth and being used by regular readers (myself included). A big thankyou to the organisers keeping a good rotation of books.

**Dog Fouling:** I checked back in the parish records and found that well over twenty years ago; dog fouling was a problem. Since those times, we have as a nation, encouraged owners to ‘pick up after your pet’. Unfortunately, it still needs to be constantly drawn to everyone’s attention. It’s not just the playing fields where our children play; dog fouling

on grazing land causes serious infections in cattle, most notably Neosporosis, a parasite in dog faeces that causes cattle abortions, birth defects, and reduced milk yields. Infected dog poo contaminates grass and water, leading to costly losses for farmers, with eggs remaining infectious for up to six months. So please don't adopt the attitude that 'it's a big field with long grass, no one will notice it' – pick it up!

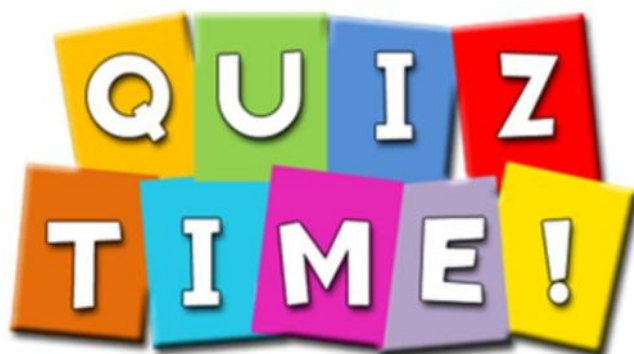
**Bus Shelter:** The bus shelter, owned by the Parish Council, on the corner of Mays Lane has been fully repaired and is safe to use after recently being damaged by an unknown lorry.

**Recent Fire at Old Quarries:** Congratulations to the three fire tenders that responded so quickly and efficiently to the fire in one of the properties on the Old Quarries site. It is reassuring to know that we are safer by having such services ready to respond to our emergencies. I believe each fire tender had a crew of four personnel; one of which included three ladies – equal opportunity at its best.

Kind regards to everyone.

*Patrick*

*Patrick Mulligan, Chairman, Avening Parish Council Tel 07713 068436*



**Avening WI invite you to a  
Fun Quiz Night**

**in the Social Club on Friday 17 April 2026 at 7.00  
pm for 7.30 pm start**

**Teams of 4 people - £20 per team to include a  
Ploughman's Supper**

**Proceeds to go to Guideposts Trust Stroud  
Community Hub**

**Everyone welcome to join us**

# District Councillor's Report



**Cotswold District Council (CDC):** In the **Overview and Scrutiny (O&S)** meeting we had an update on the Local Government Reorganisation (LGR). This scheme to dissolve district and town councils into larger 'unitary' authorities has been dictated by the government and is currently open for public consultation. The preferred scheme voted by most Gloucestershire councils is for a single unitary covering the whole of the county – this will cost around £10m to set up, with CDC directly contributing around £1.5m. This equates to around 900 band D households! However, this only represents the 'visible' costs for such things as IT, redundancy, and other physical items, but doesn't include the significant amount of officer time in shaping and running complex programmes of work. CDC officers have picked up several key programmes, and I have asked how this will impact their 'day jobs', which is serving the people of the Cotswolds.

**Litter:** My little story on McDonalds bags still seems to be generating interest in the media – this week I'm filming a piece on litter as part of a wider segment for BBC Morning Live. I've been contacted by people from across the country about problem litter, especially that from fast food outlets, and had an interesting call from a company developing an automated system for recording people throwing litter out of their cars. While I think we have more than enough cameras monitoring our every move, we need to do something before we drown in a sea of litter. I am hoping to discuss a possible trial using the technology with the Head of Environmental Services at CDC, and also to explore the possibility of working with local food outlets to add details of drive through purchases to the bags – having such information encoded on the bags would massively reduce this particular problem.

My colleagues have previously asked formal questions to the Cabinet member for waste about the removal of bins from laybys in the CDC area, and the resulting increase in litter – this month I have asked about litter removal more generally, as our verges and lanes are the worst I've ever seen. We can all do litter picks in our villages, but the road network is more dangerous and should be looked after by CDC. I will publish their response next month.

**Roads** – these continue to be a disaster! I report as many as I can on my travels, but can everyone use the Fix My Street app to alert Highways of significant issues.



Further afield, I visited the A419 'Missing Link' site (right) to catch up on progress. This major infrastructure project is progressing at pace, and at the beginning of May the new road will be partially opened from Cirencester and via a contraflow, traffic will navigate a rather complex route at the old Air Balloon roundabout before continuing to Cheltenham or the motorway. To quote our host, this will be 5 weeks of hell! It will be particularly bad if approaching from the Seven Springs direction, and is likely to be problematic for several months, so best avoided if you can.

**Councillor Tony Slater**

Cotswold District Council, Representing Grumbolds Ash with Avening.

email: [Tony.slater@cotswold.gov.uk](mailto:Tony.slater@cotswold.gov.uk) Tel: 07793669930

**Shiny Goodness**  
Your local health food store

01453 832 986  
George St, Nailsworth  
[www.shinygoodness.co.uk](http://www.shinygoodness.co.uk)

ECO VER & FAITH IN NATURE SALT OF THE EARTH bio<sup>D</sup>

Over 60 refill & loose products including milk, nuts & seeds, oats & grains, pasta, orzo, cleaning products & toiletries. Locally sourced eggs & honey.  
Large range of supplements & Free health advice.

## **PETER SAVAGE**

**ALL FENCING & GATES SUPPLIED & FITTED  
GROUNDWORKS AND LANDSCAPING UNDERTAKEN  
SEASONED FIREWOOD – LOGS & KINDLING**

**Tel: 01453 833239  
or 07785 788335**



## Avening WI

Mud, glorious mud....the walkers amongst you will know that there has been plenty of that on the local footpaths, so we were relieved that it was a bright, dry morning for our walk at the National Trust's Boundary Court, North Woodchester. The circular footpath followed a peaceful, open valley of limestone grassland and wooded banks, with views across to Rodborough Common. A delicious lunch at The Fleece completed the enjoyable morning.



A group of us joined an AWI member, knowledgeable about Westonbirt, for a walk around the Old Arboretum. Walking among wonderful trees, striking magnolias (one called 'The Diva'!) and rhododendrons, with birdsong and sunshine, this was a welcome tonic after the leaden skies and rain of the winter. With 15,000 specimens, and 2,500 species of tree from all over the globe, the arboretum plays a vital part in research and conservation, as well as being a stunningly beautiful place to visit. Robert Stayner Holford, the founder of Westonbirt, started planting in the arboretum in 1829, his vision being to create an aesthetically pleasing landscape, with the trees and shrubs forming a 'painting'.

At the March meeting Helen Mugridge, a knowledgeable speaker, passed on some very interesting facts about 'The Hebridean Islands' and their history, illustrated by beautiful photos of the birds and wildlife of the islands that she and her husband had taken on their many visits.

Following Helen's talk a representative from NFWI came, at our request, to explain why the WI had made the decision to exclude transgender women from membership, following the Supreme Court ruling in 2025 that 'woman' is defined as biological sex at birth. Nationally and locally this has upset many members as the WI has been trans-inclusive for decades. She explained that having taken legal advice the decision was taken by NFWI in order to comply with the law. Avening WI will continue to discuss and monitor this situation.

The speaker at our April meeting is Susan Parslow who will be telling us about 'Hidden Salisbury'. Our meetings are held on the second Thursday of the month at 7.30pm in the Memorial Hall. Visitors and prospective members are always made welcome. For more information contact our secretary Helen at [aveningwi@gmail.com](mailto:aveningwi@gmail.com) or 01453 835484.

***Bridget Seward***

**Save the date:** Our popular Village Quiz will be held on Friday 17th April 7.30pm in the Social Club. Please come along for an enjoyable evening, there will be a bar, light ploughman's supper and raffle. The profits from this quiz will be donated to Guideposts Trust Stroud Community Hub.

**Hurrah! The Fete returns on Sunday 7<sup>th</sup> June — including our fabulous raffle:**

**1<sup>st</sup> prize - £400**

**2<sup>nd</sup> prize - £100**

**3<sup>rd</sup> prize – afternoon tea for two at The Ivy Cheltenham**

**4<sup>th</sup> prize - £50 garden centre vouchers**

**Plus a few hampers.**

**At £1 a ticket, this is not to be sniffed at!**

To give you the best chance possible to win, a book of 5 tickets will be in each edition of the May Villager magazine. No obligation to buy but, if you do, pop completed ticket stubs and cash into the return envelope and drop off at:

**The Bell (counter top box)**

**Mullions (letterbox at Nick’s house, next to church gates)**

**14 High Street (letterbox at Elizabeth’s house)**

**11 Lawrence Road (letterbox at Christine’s house)**

With a few more tickets available at the fete itself.

The draw will be towards the end of the fete – 4.15pm on 7<sup>th</sup> June.

Thank you in advance, and best of luck!

*Nick Winkfield & Fete Team*

**STAMP**

**ARCHITECTURE AND DESIGN**

E: [hello@thisisstamp.com](mailto:hello@thisisstamp.com)

W: [www.thisisstamp.com](http://www.thisisstamp.com)

T: 07899892351



EXTENSIONS • CONVERSIONS • PLANNING APPLICATIONS • LISTED BUILDINGS

POST CARD



here!  
Unit 1, Hampton Street Ind. Estate, Tetbury, GL8 8LD

Dear Customer,

IND PLUMBING & HEATING HAS MOVED!

We can't wait to welcome you to our new premises.

We're well stocked with block & tablet Salt and Water Filters.

*Happy Easter  
Wish you were here!*



01666 503632

INFO@INDPLUMBINGANDHEATING.CO.UK | WWW.INDPLUMBINGANDHEATING.CO.UK

# ECOPEST

## PEST CONTROL

Professional, reliable and effective service

RSPH Level 2 certified

[www.ecopestcontroller.com](http://www.ecopestcontroller.com)

[www.facebook.com/ecopestcontroller](https://www.facebook.com/ecopestcontroller)

[will@ecopestcontroller.com](mailto:will@ecopestcontroller.com) or 07918587473



## Come and Try Bowls for FREE!

At Nailsworth Mills Bowling Club our new season opens on Friday 17<sup>th</sup> April with a ceremonial bowl by our president, and the draw for our grand raffle (tickets available from members).

Throughout the spring and summer anyone is welcome to come to the club on Friday evenings, where you can learn the basics in a friendly environment or just have a go - you'll be sure of a warm welcome. All you need is flat footwear, and we'll show you the rest – coaching is available if you like what you find and want to learn more. You can find us on the Nailsworth Mills estate near the garden centre – just go straight across the mini-roundabout and we are on the left.

If you want to join, our membership fees are modest as the members run the club (just £60 in the first year), and the bar prices are very attractive.

Watch out for our special event dates, in this publication, on our Facebook page, or check updates at <https://www.nailsworthmillsbowls.club/>



## CHORLEY'S AUCTIONEERS

Cotswolds Heritage since 1862



**Complimentary & Friendly  
Auction Valuations**

Monthly Auctions of Art & Antiques

Probate & Insurance Valuations

Contact us today for your valuation

**Sold for £8,000**

A 20th Century 'toi et moi' diamond ring

01452 344499 | [info@chorleys.com](mailto:info@chorleys.com) | [chorleys.com](http://chorleys.com)

# Reflective Ramble

*A Common Ground event hosted by St Nicholas' Church*

A gentle walk of up to an hour with pauses for reflection, prayer, and noticing the world around us.



Sunday 3<sup>rd</sup> May



4pm



Starting at  
St Nicholas'  
Church,  
Cherington



COMMON  
GROUND

*Finding God beyond church walls*

All are welcome - whether you are curious about faith, enjoy walking, or want a space to reflect.

Dogs and people of all ages welcome.

## NAILSWORTH ACCOUNTANCY

### ACCOUNTANCY SERVICES FOR SELF EMPLOYED AND LIMITED COMPANIES

Self-Assessment Tax Returns  
Accounts Preparation For Small Businesses  
Company Accounts  
Business Start Ups & Company Formations  
VAT Returns and Tax Planning

For a competitive quote telephone Emma

01453 835050

TOWN HALL NAILSWORTH



## BATHROOM & KITCHEN SOLUTIONS

Complete refurbishments, repairs or replacement goods in any style or design including walk-in showers, wet rooms and accessible bathroom solutions.

Get in touch to see how I can help to move your project forward.



### MIKE HULME



07826838273



20+ years of experience



Based in Avening



Mike Hulme Home Improvements Ltd

# Painting, Decorating & Garden Services

Painting & decorating • Fixtures & fittings  
Bespoke shelving • House maintenance

Lawn mowing • Hedge trimming • Pruning  
Driveway & patio jet washing • Planting  
Landscaping • General garden & pond maintenance



Quality finishing • Creative ideas • Friendly service • Fully insured

Call Sam on 07533 002946 or email [hattlldonically@gmail.com](mailto:hattlldonically@gmail.com)





# PLAY GLOUCESTERSHIRE'S PLAY RANGERS

**Easter Holidays at  
Avening Playing Field,  
Avening, GL8 8NN**

(Closest postcode)

**Wednesday 1st April  
10am to 4pm**



[///twinkling.vote.gown](https://www.what3words.com/uk/avening-gloucestershire)

With thanks to Avening Church of England Education Fund for investing  
in their community through outdoor play



Our Play Ranger activities take place outdoors in all weathers and are open access. This means there is no registration, children are free to come and go as they please.

Our Activities are aimed at school aged children. Under 8's are welcome and should be accompanied by an adult.

We believe all children have the right to play. Please talk to us if your child needs additional mobility or other support to enjoy Play Rangers.

**Play Gloucestershire**

Transforming lives through the power of play  
[www.playgloucestershire.org.uk](http://www.playgloucestershire.org.uk)

  [playgloucestershire](https://www.instagram.com/playgloucestershire)

Custom Envelopes, Packaging,  
Mini Guides, Booklets, Boxes,  
Signs, Labels & Much More...



**WHEATLEY PRINTERS** Ltd

ZETA PRINTING **STROUDPRINT**



Supporting the



**WOODLAND TRUST**



19119900607

[www.wheatleyprinters.co.uk](http://www.wheatleyprinters.co.uk) 01453 731001

Units C1 - C5 Phoenix Trading Estate, London Road, Stroud, Glos GL5 2BX



Pip Morris *interiors* Ltd  
07512 661566 - hello@pipmorris.co.uk

Planning Applications  
Architectural Design  
Interior Design  
Design Consultancy



pipmorrisinteriors.co.uk

# MINCHINHAMPTON SPORTILY FITNESS HUB



Welcome to our community gym. Join us for feel-good fitness that's all about fun, friendship and real results.

Try small group classes, weightlifting, boxercise and yoga, with support from a therapist and nutritionist to boost your wellbeing. Discover a community that cheers you on every step of the way.

Scan the QR code or head to our website to find out more.

Run by Christians. Open to all.



Scan me



We bring the energy that gets you moving.  
Discover activities near you at  
**sportily.org.uk**



# Avening Community Café

Enjoy good company, crafts, delicious home-made cakes and a drink at your Community Café – Every Tuesday morning in the Social Club from 9 – 12 am.  
Mobile Post Office on site from 9:30 – 11:30.

Shrove Tuesday was celebrated with pancakes from the WI. We also recognised the year of the Fire Horse which marked the beginning of the Chinese New Year. Thanks to Bob for organising this year's Cheltenham Gold Cup sweepstake – the lucky winners were Debs, Mel, Anna, Nanette, Tony and Julie. Our "IT Guru" Tony was on hand again in March to solve phone and computer issues.

Wiltshire Farm Foods will be visiting the Café on Tuesday 14 April to run a free tasting event for people to try a selection of their dishes – all are welcome.

The Café is pleased to support The Hope Café (for chronic pain sufferers) run by Cas on the 3rd Tuesday each month in the lounge bar, 10 to 11am

Help Keep Avening Tidy by joining in with our litter pick on 28 April – free cup of coffee for those who participate.

Many thanks to those who attended our AGM on 9 March. We are still looking for volunteers to help out behind the counter, also for someone to take over the Cake bank WhatsApp group.

## April Dates

**7th Art with Mark** (£3 each, all materials supplied).

**Easter holiday story time** with Alex for our younger members from 10 to 11am

**14th Wiltshire Farm Foods – want to know more about home deliveries of frozen ready meals?** Presentation and free tasting session starts approx. 10:30am

**21st Art with Mark** (£3 each, all materials supplied).

**Welcome to the "Hope Café",** 10 to 11.am

**28th Café Litter Pick** - volunteers to meet at 9:30, bags, gloves, fluorescent jackets supplied.

**Please Note: No Art class on Tues 5 May.**

*John Hetterley  
For Avening Community Café*

## Avening Village Notice Board

The village notice board, on the side of the Memorial Hall, is a good way of publicising village events and items of local information. Posters, ideally size A4 or A5, can be put up for you on this board. They can be delivered to John and Sandra Hetterley, 2, Orchard Field or given to them directly. They will be taken down once they are out of date. Other posters may be removed and recycled once they are faded or to make space for others.



## **S Woodman Garden Services**



General Gardening  
Grass Cutting ~ Hedge Cutting  
Tree Cutting ~ Fruit Tree Pruning  
General Ground Clearance  
Good Rates / O.A.P Discount

Please Call: Home: 01453 834744 Mobile: 07814206803



The  
**GEORGE**  
Veterinary Group



Appointments- scan here



**TETBURY CLINIC**  
23 Church Street  
**Tel: 01666 503531**

**NAILSWORTH CLINIC**  
George Street  
**Tel: 01453 705560**

FOR OUT OF HOURS  
EMERGENCIES CALL US  
**Tel: 01666 823165**

## **O.L.Cottle Family Business**

Hand Carved Memorials : Cremation Plaques  
Additional Inscriptions : Renovations and Cleaning  
All Types of Stonework  
**Tel: 01453 762877**

36 Slad Road, Stroud, Gloucestershire

# New Term 'To Do' List

- Buy new uniform/work wear/shoes
- Pay for school trip
- New work diary
- New books!
- Arrange bus fares

• Laptop? > get necessary equipment!

**ACEEF!\***

\*The Avening Church of England Education Fund have the means to financially support the education of Avening residents up to age 25. To apply for a grant please contact 01453 833016 or email [buchanan.el@gmail.com](mailto:buchanan.el@gmail.com)

**Have a look at the new website for the Avening Church of England Education Fund!**

**You will find information on the charity and what the grants include (and what is not included) at [www.aceef.org.uk](http://www.aceef.org.uk)**

# Village People

*It's always important to recognise people's contribution to their community and also to the wider community. Ann Tarlton is one of those individuals who has made such an important contribution to Cherington in all manner of roles. Also, for over 20 years she has worked at Tetbury Hospital as a volunteer as well as being on the Committee of Friends of Tetbury Hospital raising much needed funds. For this work she received the Tetbury Dolphins Inspirational Award in 2019. She has a great love of nature and is a regular contributor to The Villager on that theme.*

*So who is Ann ?*

## My Life - Ann Tarlton



I grew up in the Berkshire countryside with loving, sensible parents and a succession of spaniels. Thanks to my Scottish grandparents I developed a love for nature. My grandfather and I, with the dog, used to go for long walks (and I mean really long walks) across fields, through woods, alongside streams, my grandfather pointing out the different birds, wild flowers, trees and telling me what they were called. Those names have remained with me.

The boarding school I went to had a wonderful piano teacher called Mary Cornish who encouraged my playing all through my school days and got me as far as taking Grade VIII. When I left school there was a moment when I thought that I might go on and study the piano seriously. However, my ever-sensible parents decided that before I did anything else I should do a secretarial course

but then, having finished the course, what to do next ?

A good friend of my mother's who worked in the BBC got me an interview with one of the Administrative team and I was taken on to train as a Production Secretary.

How lucky was I? My first job was working on a radio programme called "Listen with Mother" which went out every afternoon and was produced by the late, great Biddy Baxter who, of course, went on to work on Blue Peter. She taught me so much about the production side of getting programmes on the air and it was thanks to her that I was able to move on to the Radio Talks and Features Department.

My boss was a much respected producer called Laurence Gilliam and I remember very well the morning he said to me "We've got a young trainee starting today, fresh out of university. Don't know what he'll be like but we'll give him a try."

That young trainee was Melvyn Bragg .... need I say more!

I count myself so very fortunate to have worked with such a cross-section of broadcasters, ranging from the brilliant and truly gifted poet Louis MacNeice, the war correspondent Wynford Vaughan Thomas and the "Letter from America" presenter Alistair Cooke, who was a great friend of Laurence's and always called in to the office whenever he was in London.

Because we were part of the Talks Department, every so often they would "borrow" a member of the Features Department, so I was, for a short time, lent to the "Today" programme. At that time the one and only Jack de Manio was the Presenter. Those of you who remember Jack will also no doubt remember that, amongst other things, he had a problem in getting the time right! Jack and I became great friends and our friendship went on for many years. After I married he came down here and stayed with Geoffrey and me for a weekend which caused much hilarity amongst the various friends of ours he met while he was here.

The Documentary Department included a programme on archaeological findings in the Middle East produced by an archaeologist Leonard Cottrell. I was lucky enough to work with him on it which involved the most wonderful trip to Egypt, Syria and the Lebanon visiting sites dating back many centuries. I have a collection of treasured photographs of places like Palmyra and Damascus as they were then - sadly not as they are now ....



And so my "living life to the full" continued. Looking back on those eight years I spent with the BBC, I think I would say out of all the amazing, amusing and intellectual people I had the good fortune to meet and work with there are two that come to mind. The first was working on an adaptation of "Under Milk Wood" which our production team was closely involved with, as indeed was Richard Burton, the narrator of the programme. Sitting inches away from him during the making of the programme, that voice stayed with me for some considerable time afterwards.

The second, very different moment, occurred towards the end of my life in broadcasting. This was the visit of Martin Luther King. The plans we made to interview him proved to be extremely difficult but we had the bright idea of collecting him in a BBC car, taking him to yet another interview, and record him in the car. So there we were: me, his P.A, my producer, and a tape recorder. And there he was, very happily giving us a really good interview, sitting next to me with his hand on my knee.

But it was thanks to doing an interview with the writer Michael Holroyd that I met and

married my lovely Geoffrey and became a farmer's wife much to the amusement of my BBC colleagues. "You'll be back" they all said. "You'll never settle down to country life after London". .....

Well, I did very quickly settle down and was more than happy feeding sickly calves, checking that none of the sheep had, once again, decided to visit its friends in the adjacent field and being generally kept pretty busy all day, not to mention the equally busy social life going on around us.

To give my brain a bit more activity I had a part-time job on Reception at Calcot Manor before moving on to work on Tetbury Hospital Reception. I have worked there for over 20 years. I also work very closely with the Friends of Tetbury Hospital raising the much needed funds to support the hospital in delivering excellent local services. It's a great joy to still be involved.

Because of harvest, Geoffrey and I could never get away in the summer - consequently we relied on winter sunshine in faraway places. I remember our trip to South America when we flew into Brazil, landed at Manaus and did a spectacular trip down the Amazon. We visited farms in Eastern Australia, had several holidays in Kenya staying with our friends who owned a coffee farm and organised "off the beaten track" safaris for us. We also spent time travelling in America and, because we were both traditional jazz lovers, had a week in New Orleans listening to the best jazz you could ever wish to hear being played anywhere.

Although Geoffrey didn't play, he did have (and I still do) a really lovely baby grand piano. It gives me many happy hours playing a lot of the music that he was so fond of and brings back very many happy memories.

My BBC colleagues gave up in the end trying to lure me back and anyway, as the saying goes, "You should never go back" but I still look back with great fondness to my days spent in Broadcasting House and I was so lucky to have been there in its halcyon days.

Geoffrey died in 2012 after giving me so many years of happiness, lots of laughs and overall a wonderful married life.

**Ann Tarlton**

## A Bite to Eat?

**Afternoon Tea, Christening Party or other social event ?  
Arranging a Group Lunch,**

Avening WI 'Bite to Eat' scheme may be able to assist with your catering needs.

We can provide and serve a selection of freshly prepared sandwiches, scones and cakes; a fork or finger buffet; or a two course meal.

**For prices and any further details :**

Please telephone Liz on **01453 833803** or e-mail **lizknowles@hotmail.co.uk**



# Letter to the Editors

What a mess and potentially dangerous! Take a good look, is this a vision of some third world country? No, it is a section of the road between Nags Head and Cherington. I suggest you either walk, or drive from Avening to Cherington and have a real good look at the state of the hedges and trees bordering the road.



May I remind all landowners that it is their legal responsibility to ensure that trees and hedges adjacent to the road

are maintained, and do not infringe on the passage of either horses, vehicles or pedestrians. Failure to do so can result in the Highways dept coming along cutting back any offending intrusions and then sending the landowner the bill. I am coming into my 73rd year of living in Avening and I have never seen such blatant disregard of landowners failing in maintaining their property and it's unfortunate that it seems the worst offenders are between Avening and Cherington, although there are other areas

in the Parish that are equally badly looked after.



By contrast take a drive out of the village via Star Lane where it can be seen that hard pressed farmers, blighted by the weather and constant Government interference, are taking the time in making an excellent job of maintaining their hedgerows and any overhanging trees.

*Ian Hamilton*

*It will be interesting to learn of other people's view on this topic.*

*The Editors*

## Specialist 11+ Tuition with Coach House Tutors

Established in 1990, Ros and Claire will help your child reach their full potential and feel confident and ready for the Grammar Schools' Entrance Exam. One-to-one tuition online, or in-person in either Oakridge or Nailsworth. Regular Mock exams.

[www.coachhousetutors.co.uk](http://www.coachhousetutors.co.uk) [www.facebook.com/coachhousetutors](https://www.facebook.com/coachhousetutors)

Claire: 01453 834153 Ros: 01285 760320 Email: [learn@coachhousetutors.co.uk](mailto:learn@coachhousetutors.co.uk)



# Letter from Roz Savage MP



## Rooted in Place: Caring for the South Cotswolds

April brings a welcome sense of renewal across the South Cotswolds. Hedges are greening, lambs are in the fields, and our villages feel busier again as the days lengthen. After the grey of winter, it's a reminder of how fortunate we are to live in such a beautiful and unique part of the country.

At the end of March, I attended two very different conferences - one national, one local - both focused on the same theme: the importance of place.

The first was Anthropy, exploring how Britain's future will be shaped not only from the centre, but town by town and county by county. The message was clear: when local communities are confident, well supported and proud of where they live, the whole country benefits.

The second was the Cotswold Regenerative Agriculture Conference, where farmers and local businesses shared practical ideas for strengthening food production while improving soil health, biodiversity and resilience. There was a strong spirit of collaboration - very much in keeping with our area. Both gatherings reinforced something I hear repeatedly from residents: decisions about land matter deeply.

Across the South Cotswolds, in places such as Siddington, Lechlade, Fairford, Kempford, Lea, Cricklade and Crudwell, many of you have contacted me about large housing proposals and their knock-on effects - on traffic, flood risk and sewerage capacity.

Recent national coverage has sharpened concerns. Channel 4's Dirty Business highlighted the long-running issue of sewage pollution, while a recent New Statesman investigation reported thousands of illegal sewage discharges by Thames Water in recent years - raising serious questions about infrastructure capacity as further development is proposed.

This is not nimbyism. It reflects genuine care for our countryside, rivers and village character. Most people accept that some new homes will be needed - particularly homes that local families can afford. But many residents are understandably questioning whether the scale and pace of development now being proposed is realistic for rural areas like ours.

Part of the concern is that housing targets are increasingly set from the centre, while the practical consequences are felt locally. Rural communities want to help shape their future - not simply absorb change decided elsewhere.

Too often, housing targets appear first, with infrastructure expected to catch up later. In practice, it rarely works that way. When roads, drainage and health services are already stretched, the effects are felt quickly - whether after heavy rainfall, at school drop-off, or along rural lanes never designed for higher traffic volumes.

Many residents also want to know whether we are making the best use of land that has

already been developed before building over productive farmland and open countryside? Prioritising brownfield land where possible would help protect both food production and the character of rural landscapes. The South Cotswolds has evolved over centuries. Change is part of that story. But growth that runs ahead of infrastructure, or erodes the character of our villages and countryside, risks undermining the very things that make this area so special.

With careful planning, proper infrastructure and genuine community input, the South Cotswolds can continue to thrive - protecting the landscapes we cherish while ensuring our villages remain vibrant places to live for generations to come.

Warm wishes,

*Roz Savage MP, South Cotswolds*

# AVENINGCINEMA CLUB



**Wednesday 28<sup>th</sup> April  
2026**

**Doors open 7pm. Film  
starts 7.30pm. Interval  
halfway**

**Please feel free to bring  
refreshments**

**AVENING  
MEMORIAL HALL**

**Admission £7**





# Avening Playgroup

We would have already had our spring tidy-up by the time you read this. The committee and staff went in on the first Tuesday of the Easter Holiday with the plan of sorting out the activities and having a good clear out. Our main aim was to sort out the enclosed cover area and make the activities more attractive to the children.

Work on the Forest School area has begun and it has now been cleared. We just need to make the path and put some fencing in. Kate has already been digging areas ready for planting activities. We are hoping that this will be ready for September and it will be open on Thursdays during term time. If you would like to put your child's name down, please call or email us using the contact details at the bottom of this article. Please note that priority will be given to those 3 and 4 year olds already attending Avening Playgroup.

Since returning to playgroup after the February half term we have been looking at:

**Chinese New Year of the horse** – making lanterns, dragons, fans and using chopsticks and tweezers to pick items up.

**World Book Day:** The children brought in their favourite stories to share, we read *The Gruffalo*, made Gruffalo masks and looked at the sounds s, a and t.

**Mother's Day:** they made cards and did lots of colouring for their Mums.

**Spring:** we looked at different animals and what their babies are called, talked about what seeds need to grow, planted sunflowers and made sheep collages



Apart from our themed activities, the children have been involved in lots of rice and water play in the tray. They have continued the water play outside and enjoyed painting the playground.

If you are looking for a playgroup space for your child over the next couple of years, please contact Angie on 01453 832695 or email [aveningplaygroup@gmail.com](mailto:aveningplaygroup@gmail.com) in order to put their name on our waiting list or to arrange a time to visit the setting. We are open term time, Monday to Wednesday 9am – 3pm and Thursdays for our Stay & Play session between 9.30 and 11.00am.

Happy Easter from everyone at Avening Playgroup.

**Angie Heslop**

## Hope Cafe

**A new monthly event; next one is on 21st April**

**Evening Social Club 10.00-11.00am**

For all **chronic pain/symptom** sufferers - 'where nothing works' eg: ongoing body pain(back, neck,head etc), vertigo, fibromyalgia, burning mouth etc.

Run by Physiotherapist Cas BW and retired GP Anne-Marie Marlow

Please contact Cas for more details 07900472999

# CHIM-CHEROO

PROFESSIONAL CHIMNEY SERVICES

Hire a lucky sweep  
for your wedding!

- Woodburners, open fires, Agas etc
- Member of the Institute of Chimney Sweeps
- Fully insured

- CCTV inspections
- Blockages removed
- Safety certificates issued
- No mess

Jos Stone  
07507 638 316  
chimcheroonailsworth@gmail.com



## Fred Stevens Funeral Directors

We give immediate attention – 24 hours

Traditional and contemporary styled  
funerals arranged

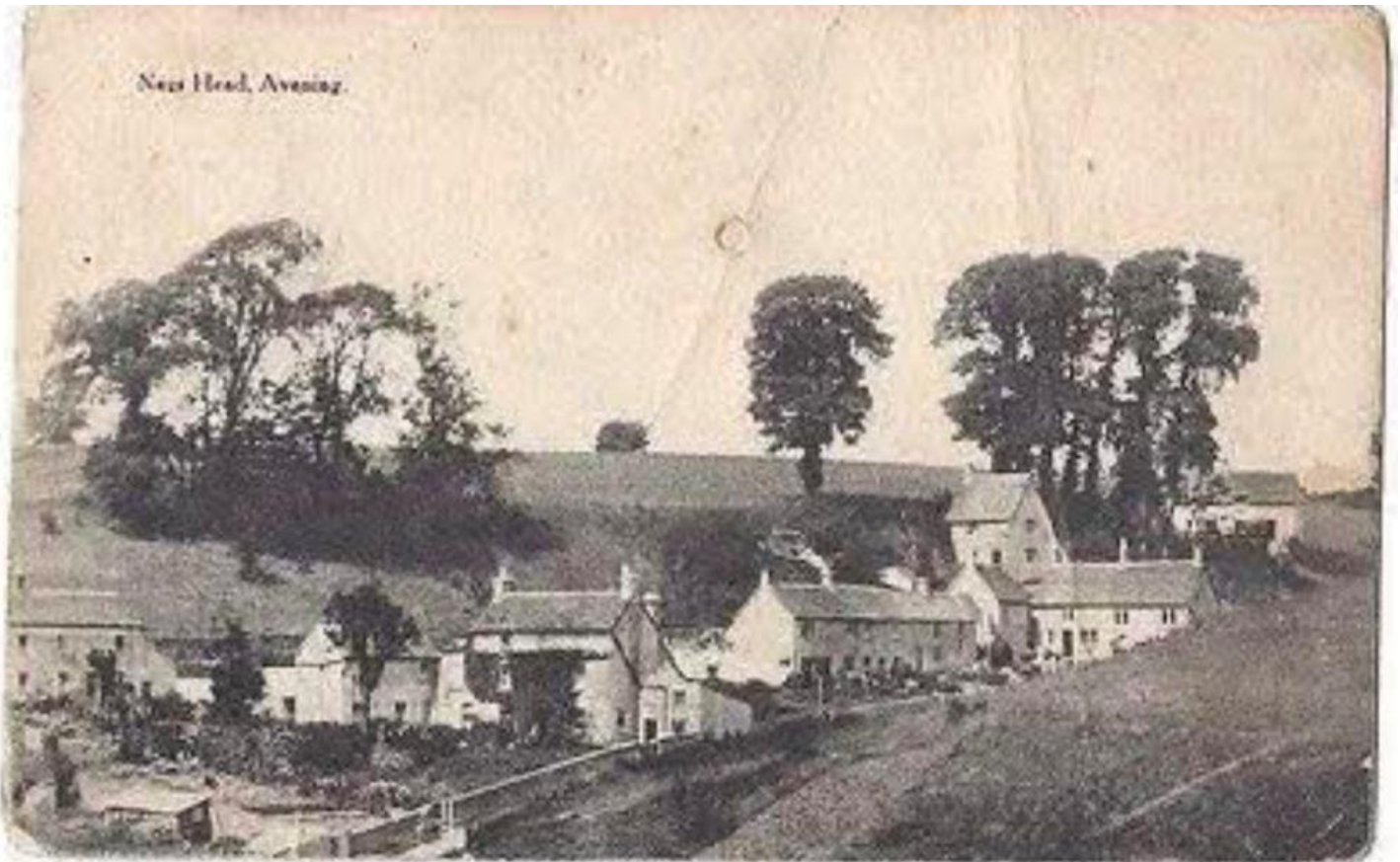
Individual, flexible approach

Well established, family-owned company with highly  
experienced staff

Newmarket Road, Nailsworth, Gloucestershire GL6 0DQ  
telephone 01453 832188

email@fredstevens.co.uk www.fredstevens.co.uk

# Down Memory Lane



Nag's Head in about 1908. Isn't it amazing how few trees there in comparison to nowadays.

Many thanks to the Old Avening and Cherington Facebook page for the photo.

## Cobalt – Spring Events 2026

There are plenty of opportunities this spring to get involved, have fun, and support a wonderful local cause:

In April, Make a Will Month returns, with local solicitors waiving their fees in exchange for a donation to Cobalt — a simple way to support the charity while putting your affairs in order.

Garden lovers can enjoy two lovely open garden events this year, at Quenington in April and Highnam Court in June, both featuring beautiful surroundings, plant stalls, and refreshments.

You can also learn more about the charity's work at a free talk in April or take part in the colourful and family-friendly Xtreme Colour Run at Dunkertons Dowdeswell Park in May.

**For full details and booking, visit <https://www.cobalthealth.co.uk/fundraising/>**





- April 1** **Playtime Theatre:** Play-along session for pre-schoolers from The Last Baguette company – join them for story-telling, music and puppetry. Tickets £5 under ones free. 10-11am
- April 2** **Film: Coppelia:** The Royal Ballet’s performance of this much loved classical ballet. Tickets in advance £10. 7pm
- April 11** **Chris Treglown Singing Awards:** A concert featuring 12 up-and-coming young singers competing for the singing awards before a panel of international experts! Tickets in advance £12.50. 7pm
- April 12** **Ninebarrow:** The Dorset folk group are back again for a night of music and storytelling with their songs and stories inspired by British history and landscape. Tickets in advance £18. 6pm
- April 17** **Mitch Benn – The Lehrer Effect:** Songs of the legendary comic songwriter Tom Lehrer are given a twist by satirical song-writer Mitch Benn of Radio 4 fame. Tickets in advance £20. 8pm
- April 18** **This Flight Tonight:** a tribute to singer/songwriter Joni Mitchell’s much-loved Blue album from Paul Zervas and Kathryn Pepper and their 5 piece band. Tickets in advance £25. 7.30pm
- April 19** **Gardening Questions:** your horticultural hassles answered by our panel of experts. Tickets in advance £6.50. 2pm
- April 25** **Jazz – The Transatlantic Hot Club:** Relive the decadent Parisian jazz scene of the 1930s with the Hot Club on their first visit to the Goods Shed. Relive the music of Reinhardt and Grappelli with a bit of bossa nova. Tickets £16 in advance. 7.30pm

**For more details of our other events including film, talks, exhibitions, and afternoon tea concerts and to book tickets visit our website:**

**[www.tetburygoodsshed.co.uk](http://www.tetburygoodsshed.co.uk)**

### **The TransAtlantic Hot Club!**



Relive the decadent Parisian jazz scene of the 1930s with The Transatlantic Hot Club as they make a first visit to the Tetbury Goods Shed on their 2026 UK tour on the 25th April.

Featuring Adrien Chevalier (New York) on violin; Ben Creighton Griffiths (Cardiff) on harp, Jeremy Lohier (Corsica) on accordion, and Ashley John Long (Cardiff) on double bass. Expect to hear swing classics, Django standards, Corsican song, and Latin bossa nova. Tickets are available now on the Goods Shed website.

# Puzzle Answers

2	6	9	1	7	8	4	5	3
8	5	3	4	2	6	7	1	9
7	4	1	5	3	9	8	2	6
6	1	4	8	5	2	9	3	7
5	7	8	9	1	3	6	4	2
3	9	2	6	4	7	1	8	5
4	3	6	7	8	5	2	9	1
1	2	7	3	9	4	5	6	8
9	8	5	2	6	1	3	7	4

**TONY'S CHARITY QUIZ NIGHTS**

**THE BELL, AVENING**

**1ST SATURDAY OF THE MONTH**

**£2 A PLAYER: A MAXIMUM OF 4  
PLAYERS PER TEAM**

**ALL PROCEEDS TO THE COBALT  
APPEAL, CHELTENHAM**



**J O I N E R Y**  
L I M I T E D

- Windows
- Doors
- Conservatories
- Bifold Doors
- Stairs

01453 755007

info@gkjoinery.com

gkjoinery.com

## Computer or Tablet Problem? Struggling with Technology?

**Home Visits:** I come to you for your convenience.

**Knowledgeable :** 20 years in business in the Stroud area.

**Tailored Support:** One-on-one help tailored to your needs.

**Easy Learning:** Simple explanations and step-by-step guides.

**Services :** Computer repairs & upgrades

Computer health checkups

Plain speaking tuition

Wi-Fi problems

Advice & Help

Tech support

Easy backup

**Google**



5 star rating

**Matt Hughes**

**07740 167318**

*£45 ph Est.2003*

Based in Stroud

See my hints & tips  
at [pcprop.com](http://pcprop.com)





**Sunday 7 June Avening Church 1.30 – 4.30pm**

**An Exhibition of paintings, printmaking and photography including drawings, sculpture and textiles plus live model sketching**

### **Photography Competition:**

**Age groups + categories:**

**11yrs/Yr 6 and under: 1. Local nature 2. Favourite thing(s)**

**11yrs/Yr 7 up to 18yrs/ Yr 13: 1. Local nature 2. Alphabet(s) in the built environment**

**Adult: 1. Bridge(s) 2. Local Village/Townscape**

**Print out your photos 10cm×15cm(6"×4") colour or monochrome. Add the title and your name.**

**PRIZES: £30 for overall winners; £10 runners up  
Free to enter.**

### **Calling all exhibitors:**

**Max 4 pieces each; submit your work Thursday 4 June from 2pm and Saturday 2-4pm to the church.**

**Free to exhibit.**

**Contact Liz Bury 07814 410642 with any questions.**

# Avening Parish Council



**Annual Parish Meeting:** The Annual Parish Meeting will be held in May, (date to be confirmed). This gives parishioners the opportunity to ask The Parish Council questions. Attendance has been low in recent years attendance, so please come along and have your say about the village.

**Roads and Footpaths:** Please report any issues on the footpaths or the roads, on Fix My Street. This is the quickest way to get highways to send an inspection team <https://fixmystreet.gloucestershire.gov.uk>. If it is an emergency please call 08000 514 514.

## **Planning Applications & Tree Works Since the Last Issue and Parish Councils Decision** **New Planning Applications February 2026**

26/00324/FUL: Minchinhampton Golf Club Demolition of existing electrical switch house and replacement with a new switch house in an adjacent location - Support

26/00380/TCONR: Star Lane T1 Ash - Fell to ground level. Symptomatic to ADB, recently shed a large limb that landed in the road. - Support

26/00597/COMPLY: The Old Quarries Compliance with conditions 10 (Design details - fence) and 18 (Landscaping) of permission 22/03666/FUL - Change of use of existing buildings from residential institution(C2 use) to residential (C3 use) to form a total of 11 no. dwellings, through demolition of modern extensions, internal alterations and extensions, demolition of modern institutional buildings and replacement with new dwellings, associated garaging, landscaping, construction of new wall in alignment of historic walled garden and associated works - Support

## **Planning Correspondence and Decisions**

26/00525/TCONR: Rodways Place Point Road Self-seeded cherry tree. Blocking out significant light to property. I have consulted a tree surgeon who confirms that it is not a good specimen. I have already had planning approved to reduce significantly but in light of advice would like to remove altogether. – Permitted

26/00312/COMPLY: 12A Star Lane Compliance with condition 5 (sample walling panel) of permission 24/01031/FUL - Erection of a residential dwelling - Variation of condition 2 (Approved plans) of planning permission 21/03751/FUL – Permitted

25/03913/FUL: Vale Farm West End Construction of an equestrian manege and ancillary residential sand games court – Refused

25/03907/FUL: The Barns Star Lane Erection of front porch and x2 dormer windows to front and x1 dormer window to rear, alterations to first floor side facing window and installation of solar panels to rear - Permitted

**Dog Fouling:** If you witness dog fouling not being picked up by the owner, please report by following the link: <https://www.cotswold.gov.uk/environment/litter-street-cleaning-and-dog-fouling/>

**Neighbourhood Policing Team:** Police Seargent Garrett Gloyn, PC Morley-Blackwell, PCSO Edmund Maina 101@gloucestershire.police.uk

*The Agenda and minutes of the last parish council meeting can be viewed at [www.avening-pc.gov.uk](http://www.avening-pc.gov.uk). The Parish Clerk can be contacted via email: [parishclerk@avening-pc.gov.uk](mailto:parishclerk@avening-pc.gov.uk)*



# Holy Week & Easter Services

## Maundy Thursday

5pm - Holy Communion with foot washing  
(at Cherington)

## Good Friday

10am - From Gallows to Glory: An Easter  
Meditation Service (at Amberley)  
2pm - Tenebrae Service (at Avening)

## Holy Saturday

9pm - Easter Vigil Service (at Minchinhampton)

## Easter Day

6.30am - Dawn Service (at Tom Long's Post)  
10am - Holy Communion (at Avening &  
Cherington)



# Regular Activities in the Villages

Would organisers please let us know if there are any changes or additions to these events

Event	Day	Time	Where	Contact
Avening Silver Band	Monday	7.00-9.00pm	Memorial Hall	<a href="mailto:aveningsilverband@gmail.com">aveningsilverband@gmail.com</a>
Avening Church bell ringing	Monday	7.30-9.00pm	Church bell tower	Andrew Lelliott 07726 345516
Community Café	Tuesday	9.00am - noon	Social Club	Gill Adams 07826 291759
Mobile Post Office	Tuesday	9.30-11.30am	Social Club car park	
Cherington PC	Tuesday bi-monthly	6.00pm	Cherington Village hall	Babs Malony 07958116794
Line Dancing	Tuesday	8.00 - 9.30 pm	Social Club	Social Club 01453 833760
Avening Churchyard tidy up	Wednesday	6.00 - 7.00pm	Holy Cross churchyard	Churchwardens
Avening PC	2nd Wednesday each month	7.30pm	Memorial Hall	Shani Baker 07415 039234
Avening Cinema Club	Last Wednesday each month	7.30pm	Memorial Hall	aveningcinemaclub@gmail.com
Avening W.I.	2nd Thursday each month	7.30pm	Social Club/ Memorial Hall	Liz 01453 833803
Fledglings for pre-schoolers	Fridays during term time	2.00 - 3.00pm	School Garden	Avening School
Fun Skittles	Last Saturday each month	7.30	Social Club	
KNEAD Mobile Bakery	Last Saturday each month	9.45 - 10.30am	Memorial Hall	
Charity Quiz	1st Saturday each month	8.00pm	The Bell	
Avening Singers	Sunday	4.00pm	tba	Derrick Pierce 01453 835090

# HIT A POTHOLE?

Keep your car safe and roadworthy

## Pothole damage health check

Our technicians will inspect:

- Wheel rims
- Tyres
- Suspension

*PLUS*

Carry out full geometry alignment

Only  
**£144**  
Inc VAT

for free, friendly, local advice, pop in or give us a call.

**01453 832871**

Book online anytime  
[www.auto-bodytech.co.uk](http://www.auto-bodytech.co.uk)



Inchbrook Trading Estate, (A46) Bath Road, Nailsworth, GL5 5EY

### Day Centre & Social Club

- Home cooked lunch plus teas/ coffees
- Group activities, craft sessions and companionship

### Home Care Services

- Help with Personal & Domestic tasks, Sitting Service
- Meals on Wheels locally

### Nursing Home

- General & Specialist Dementia Nursing
- Registered Nurses on duty 24 hours a day
- Free and Pre-arranged Respite Care available all year round



## Horsfall House

For more information please contact us on **01453 731 227** for an Information Pack or go to: [www.horsfallhouse.co.uk](http://www.horsfallhouse.co.uk)

Patron: HRH The Princess Royal, Minchinhampton Centre for the Elderly, Registered Charity No: 287479

# The Bell at Avening

a traditional British pub serving a great selection of real ales and authentic Indian food



**OPENING TIMES:**  
**MONDAY: CLOSED**  
**TUESDAY-THURSDAY: 5.00PM-CLOSE**  
**FRIDAY: 4PM-CLOSE**  
**SATURDAY & SUNDAY: 3PM-CLOSE**  
**FIRST SATURDAY OF EVERY MONTH IS TONY'S QUIZ NIGHT**

*Little*  
**INDIA**  
at THE BELL

Little India @ The Bell, serving food from Tues-Sun 5.30pm-close  
Call **01453 836453** for great food to takeaway  
Visit our website for full menu

FOOD HYGIENE RATING

0 1 2 3 4 **5**

Call us on: **01453 836422** or e-mail us at [info@agpubs.co.uk](mailto:info@agpubs.co.uk)

[www.thebellavening.co.uk](http://www.thebellavening.co.uk)

Find us on Facebook  
by simply searching  
"Bell at Avening"

