

# The Villager

A Magazine for Avening, Cherington  
and Nags Head

February 2020

[editors@acvillager.co.uk](mailto:editors@acvillager.co.uk)



Pub ~ Dining ~ Rooms ~ Events



## OPEN

Mon - Thur: 11am - 11pm  
Fri - Sat: 11am - 11.30pm  
Sunday: 12pm - 11pm

## LUNCH

Mon - Sat: 12pm - 2.30pm  
Sunday: 12pm - 5pm

## WORKERS' POT

Mon - Fri: 5pm - 6.30pm

## DINNER

Mon - Sat: 6.30pm - 9.30pm

**DOG  
FRIENDLY!**



## THE ROYAL OAK TETBURY

**Walkers, cyclists, explorers** - welcome to The Royal Oak in Tetbury, an 18th century inn with a classic saloon bar, courtyard, gardens and stylish lodgings. Upcycled furnishings, cosy booths, a deco piano and a dining room in the rafters offer dining as well as private dining for gatherings and celebrations.

**Cask Marque excellence** is awarded for the great selection of guest ales including Stroud brewery. The seasonal menus showcase organic meat from local farms, sustainably sourced fish specials and with monthly Meat Free Monday events and a standalone vegan menu the choice is excellent for all.

With **six lovely en suite rooms** including the sensational Oak Lodge, and three dog-friendly rooms, The Royal Oak is a fun and relaxed getaway from which to browse the chic boutiques of Tetbury or explore the beautiful Cotswolds.

1 CIRENCESTER RD. TETBURY GL8 8EY  
01666 500021 | [THEROYALOAKTETBURY.CO.UK](http://THEROYALOAKTETBURY.CO.UK)

# February 2020

A very happy New Year to everyone in Avening, Cherington and Nag's Head. We hope you all had a wonderful time celebrating the festive season and are now well relaxed and looking forward to everything that 2020 will bring.

Unfortunately, the year has already brought sad news to Avening and to The Villager magazine. Just before Christmas we lost Charles Rymer, who was Cherington born and bred and well known in Avening School as the lunchtime and after school leader. He was also a great supporter of The Villager, supplying us with historical prints and excellent photos, many of which have graced the front cover. He will be sadly missed.

And then in mid-January Riley Vincent, who at 96 we believe was the oldest person in Avening, passed away. Another life long resident and great supporter of this magazine, Riley wrote many articles on the history of the village and was our proof-reader, so another hole has been left in the magazine and the villages. We send our condolences to the family and friends of both Charles and Riley.

Finally, we are grateful for the seasonal advice submitted by Click Mitchell 'In memory of a lovely Avening lady, June Jellyman - so as not to slip on ice, put pure wool socks over your wellies or shoes'. Happy walking!

*The Villager Editors*

## The Villager Magazine

<b>Editors</b>	editors@acvillager.co.uk Jane Archer (07812 137161), Frances Conway (01453 832177) and Derrick Pierce (01453 835090).
<b>Advertising</b>	editors@acvillager.co.uk, Gwyneth Simpson 01453 836556
<b>Deliveries</b>	Cas Boddam-Whetham 01453 834834
<b>Deadline</b>	<b>18th of each month</b>

## Photographs in The Villager Magazine

The much missed talented photographer **Charles Rymer** took this lovely picture of Avening in the snow

If you have a photo of Avening or Cherington which you would like to share with us, please feel free to send it to us. You never know, it might turn up on the front cover...!

**editors@acvillager.co.uk**

# THE GREAT EXHIBITION



**Photographs**

**Evening - June 5th. 6th 7th 2020**

**Get out your Camera! Prizes!**

**Details for submission to follow in the next Villager**

**Sponsored by Facsim Ltd. Renishaw PLC**

**Photograph: Krista Jones. 'Oh. the Places!'**

**Runner up last year**

# Regular Activities in Avening and Cherington

Please let us know if we have forgotten any regular event or if there is something you would like to have included here.

Event	Day	Time	Where	Contact
Line Dancing	Monday	7.30 - 9.30pm	Social Club	Social Club 01453 833760
Mobile Post Office	Tuesday	9.45 - 11.30am	Social club car park	J. Clutterbuck 01453 542754
Community Cafe	Tuesday	9.00 - 11.30am	Social Club	Jenny South 01453 883456
Churchyard tidy up	Tuesday	6.00 - 7.00pm	Holy Cross churchyard	Rev. Gerald 01453 883456
Cherington PC	Tuesday	6.00pm	Village Hall	Richard Smith
Bell Ringing	Tuesday	7.30 - 9.00pm	Church Bell Tower	Andrew 01453 835783
Line Dancing	Tuesday	8.00 - 10.00pm	Social Club	Social Club 01453 833760
Avening Youth Club	Every Tuesday in term time	6.00 - 7.30pm	Memorial Hall	Rev. Gerald 01453 883456
Over 60s Lunch Club	1st Wednesday each month	12.30pm	Social Club	Christine 01453 833246
Avening Cinema Club	1st Thursday each month	7.30pm	Memorial Hall	Katy 07806 614753
Avening W.I.	2nd Thursday each month	7.30pm	Memorial Hall	Liz 01453 833803
Avening PC	3rd Thursday each month	7.30pm	Memorial Hall	Caroline 01285 380041
Summer Skittles	Friday	8.00pm	Social club	Derrick Ind 01453 835752
Charity Quiz	1st Saturday each month	8.00pm	The Bell	
Avening Angels Choir	Sunday	4.00pm	Various	Derrick Pierce 01453 835090

# Contacts for the Villages

Avening and Cherington Priest	Revd. Gerald South	01453 883456
Avening & Cherington Churches Reader	Derrick Pierce	01453 835090
Avening & Cherington Cricket Club	Derrick Ind	01453 835752
Avening Angels	Derrick Pierce	01453 835090
Avening Art Group	Doreen Pierce	01453 835090
Avening Baby & Toddler group	Katy Upton	07806 614753
Avening Bell Tower Captain	Andrew Lelliott	01453 835783
Avening Church Churchwardens	Elizabeth Buchanan Elizabeth Fuller	01453 833016 01453 835067
Avening Church Flower Team	Doreen Pierce	01453 835090
Avening Church Organist	Colin Chambers	01666 880026
Avening Church PCC Treasurer	Ann Brick	01453 834311
Avening Cinema Club	Katy Upton	07806 614753
Avening History Project	Jean Chatelain	01453 834713
Avening Memorial Hall		07583 073604
Avening Oil Coordinator	Frances Lindley	01453 835115
Avening Parish Council Clerk	Shani Baker	07415 039234
Avening Playgroup	Angie Heslop	01453 832695
Avening Primary School	Jane Rushton	01453 833191
Avening Silver Band	Jim Hill	01453 834438
Avening Social Club	Derrick Ind	01453 835752
Avening Youth Club	Revd. Gerald South The Door	01453 883456 01453 756745

Cherington Village Hall	Wendy Eldridge	01285 841327
Cherington Parish Council Clerk	Richard Smith	Cheringtonparishcouncil @yahoo.co.uk
Cherington Church Churchwardens	John Bate-Williams Helen di Mauro	01666 503544 07796 937268
Cherington Church Flower Team	Elizabeth Workman	01285 841294
Cherington Church Organist	Elizabeth Workman	01285 841294
Cherington Church PCC Secretary	Elizabeth Workman	01285 841294
Cherington Church PCC Treasurer	Paul Cable	cabes50@yahoo.co.uk
Community Café	Jennie South	01453 883456
Community Café Crop Swap	Chandy Rodgers	Chandra.rodgers65@ gmail.com 07734 971211
Cotswold District Councillor	Richard Morgan	
Friends of Avening School	Nicky Dill	01453 833191
Over 60s Lunch Club	Christine Howell	01453 833246
South Cotswold Community Wellbeing Agent		01452 528491
Stroud Hospital	Reception	0300 421 8080
Tetbury Hospital		01666 502336
Women's Institute	Liz Knowles	01453 833803

### **VILLAGE & AREA WEB SITES**

**Avening Parish Council: [www.avening-pc.gov](http://www.avening-pc.gov)**

**Avening Church: [www.aveningchurch.info](http://www.aveningchurch.info)**

**Cherington Parish Council: [cheringtonpc.org.uk](http://cheringtonpc.org.uk).**

**Cherington Village: [www.cheringtonvillage.co.uk](http://www.cheringtonvillage.co.uk)**

**Cotswold District Council: [www.cotswold.gov.uk](http://www.cotswold.gov.uk)**

# Letter From Avening Parish Council Leader



Apologies in advance to the editors and readers as this column is a bit longer than usual as there is a lot to get through!

In a few weeks the dreaded Council Tax bill will be dropping through our letter boxes. The PC are very aware of the difficult economic conditions and how tough it can be for some households to pay ever-increasing bills, and while there are many demands on our limited resources we have to balance these against raising bills excessively. The list of projects, events, likely grants and running costs were presented at the December meeting and it was agreed we would keep the precept increase to the rate of inflation – this gives us roughly an additional £800, and represents under £2 for the year for the average household.

Our priority this year is to commence the repairs programme to the hall, most notably the roof, and continue with repairs and improvements to the playing field. Due to the significant costs involved we can't do these without external help, and we have started the process to apply for grant funding. However, with these two major projects it means we will not be able to run some events for free (or possibly at all), and community grants may not be as generous as in previous years.

Wherever possible we get external support to keep our costs to a minimum, and Richard Morgan (our district councillor) has been particularly supportive in obtaining grants for us – these have helped with the youth club costs through the year, and paid for our Christmas tree celebration, to name but two. We will continue to scrutinise all our costs and ensure we get best value for your money.

The Parish Council has been discussing the setting up of a village first responders list to be held confidentially by the council in case of a serious public emergency. If you are someone who feels they would like to join this list and have relevant qualifications, ie doctor, paramedic, nurse, qualified first aider or perhaps if you hold an up to date certificate for CPR, we would really appreciate you coming forward. To clarify, this is to be retained by the Parish Clerk and Chairman just for a serious incident.

I was saddened by the sudden death of Charles Rymer over Christmas. I have known Charles for much of my life, and we always had a friendly rivalry over our photo entries in the Cherington Show. We both played skittles for Cherington since the early '80s, and he even had a particular shot named in his honour. Charles was a lovely, gentle man and will be greatly missed.

Plans to reinstate the badminton court markings are progressing, and we hope to get a professional coach from the Badminton Association to help launch a club



soon. Cllr Mulligan has also offered to coach adults. More details to follow.

Hedge laying: the playing field hedge has been trimmed recently and it gives us the opportunity to re-layer the trees. We last did this about 10-12 years ago and it was really interesting and fun to learn an old rural skill. We've organised a trainer to show anyone interested (adults and accompanied children welcome) how to layer. The work will take place on the weekend of 29<sup>th</sup> Feb - It will be hands-on, probably cold, possibly wet, and we'll be using some sharp tools, so dress appropriately and join us for a few hours, or all day if you can! Please let me or the clerk know if you are interested so we know likely numbers.

We have been asked about our annual Parish Show arrangements – if we have one this year it will most likely be in September to avoid the two other established events in June. We'll be discussing options at the February meeting and I'll let you know the outcome in the next magazine.

Since I proposed an extension to the new gas main, I have been trying to source grant funding to help offset the costs of the project. Unfortunately there is no such funding available so the £6,500 cost per household makes the scheme uneconomic at present.

I have been a councillor for around 16 years and chairman of the PC for almost 6 years. I have really enjoyed the challenges and achieved many successes during my tenure, but have decided that the time is right to hand over the reins to a new leader and return to the 'back benches'. We have a great team of councillors and will have the opportunity to choose someone with innovative new ideas who can inject renewed energy to continue our work. I'll remain in the role until the AGM in April, and then transition to the new leader.

*Tony Slater*

	<ul style="list-style-type: none"><li>◆ Tree felling</li><li>◆ Crown reduction / reshaping</li><li>◆ Pruning</li><li>◆ Hedging</li><li>◆ Stump removal</li></ul>
<p><b>TAVERNER</b> Tree Services</p>	<p><b>NPTC Qualified &amp; Fully Insured</b> Free assessment &amp; quotations</p>
	<p>James Taverner 07515 918582 info@tavernertrees.co.uk</p>

# Avening and Cherington Churches



## **Christmas Thank-Yous**

Christmas services at our two churches again attracted large congregations and much appreciation, not least from people who were visiting the area. Much goes on behind the scenes in preparation for these occasions – flower arranging, church cleaning, furniture moving, musical preparations, nativity costumes and much else. There are far too many people to name but our youngsters deserve mention as they made invaluable contributions: at Cherington in the Christingle service and at Avening in the Nativity service – let's just mention those who narrated the service so clearly, Isaac and Lore Barnett and Beatrice Hatt .... and Ethan, our live baby Jesus.

## **Our Churches – New Lghting at Avening and Much Else**

The poor lighting in Avening church had been a difficulty for some time but much of it was renewed during December and this is now a great improvement. The church would not have been able to afford the considerable cost of this work without a very generous legacy: the day to day finances remain very tight.

Included in the scheme are uplighters in the nave showing up the (probably 14th Century) wooden roof timbers. We are reminded of the many magnificent qualities of our village churches; both Avening and Cherington are widely recognised as Cotswold gems.

They are there to be used – please feel free to call in and spend some time there. In addition to the architecture is a sense of history where so much of the lives of our villages has taken place and, not least, there is a sense of timeless detachment from the every day affairs of life: however it is exactly that which makes them ideal places to go to reflect on our concerns, our sorrows and the many challenges of life.

## **Not Long Until Lent**

The end of this month brings Ash Wednesday, the start of the season of Lent. Traditionally this is a period for 'giving up' things and that may well be helpful for many people. It is not the only approach though; how about taking something up – something that will aid the environment, something that will bring joy to others, something that will promote health and well-being in ourselves or others, allowing ourselves a little 'time out' to reflect on our lives, our inner being, the God-shaped hole within us.

There are many resources which are designed to assist. One of them is #LiveLent: Care for God's Creation. This Church of England publication includes a booklet of daily readings, reflections and actions – there is an adult and children's version in

addition to on-line resources at [www.churchofengland.org/lent](http://www.churchofengland.org/lent). If you would like a copy of either booklet please let me know by 10<sup>th</sup> February. I can also provide details of many other publications designed for use during Lent.

**From the Church Registers**

20<sup>th</sup> December Funeral and burial of Gill Bailey (Cherington)

15<sup>th</sup> January Funeral and burial of Charles Rymer (Cherington)

**Gerald South, Parish Priest for Avening and Cherington**  
**01453 883456 gp.south@btopenworld.com**

	<b>Holy Cross Avening</b>	<b>St Nicholas Cherington</b>
	<b>February</b>	
2 <sup>nd</sup>	11.00 am Eucharist	9.30 am Eucharist
4 <sup>th</sup>	9.45 am Prayers	
6 <sup>th</sup>	11.00 am Praying the Parishes*	
9 <sup>th</sup>	8.00 am Said Eucharist 5.30 pm Evening Prayer	10.30 am All Age Service
11 <sup>th</sup>	9.45 am Prayers	
16 <sup>th</sup>	11.00 am Eucharist	9.30 am Eucharist
18 <sup>th</sup>	9.45 am Eucharist (BCP)	
23 <sup>rd</sup>	11.00 am Eucharist	9.30 am Morning Prayer
26 <sup>th</sup>	7.00 pm Ash Wednesday Service (Avening)	
	<b>March</b>	
1 <sup>st</sup>	11.00 am Eucharist	9.30 am Eucharist
3 <sup>rd</sup>	9.45 am Prayers	
8 <sup>th</sup>	8.00 am Said Eucharist 5.30 pm Evening Prayer	10.30 am All Age Service

\*venue to be announced

**The Village Notice Board**

The village notice board, on the side of the Memorial Hall, is a good way of publicising village events and items of local information. Posters, ideally size A4 or A5, can be put up for you on this board. Please continue to give them to Jennie South directly or leave in the church porch in the envelope provided. They will be taken down once they are out of date. Other posters may be removed and recycled once they are faded or to make space for others.

# Charles Francis Rymer

**13 May 1954 - 23 December 2019**



Generations of Rymers have been farming in Gloucestershire. Early records mention Rymers farming near Chepstow, Lydney and Frocester before settling 4 generations ago around Cherington. Charles's great-grandfather farmed at the Grove, whilst his parents Jack and Jane lived first at Larkhill near Culkerton and then Colly Farm. Charles was born at Colly Farm Cherington on Thursday May 13<sup>th</sup> 1954. Soon after, the family moved into their new house called the The Gastons close to Charles's grandparents who were farming at Westrip, Cherington.

I first met Charles in 1959 when I was just 4. My father was taking the Christmas midnight service in this church and as midnight in those days was considered far too late for any young child to be up, Jack and Jane kindly offered to look after me in their home. Philip recalls

seeing me peer around the bedroom door to say hello. I vividly remember the bedroom which Charles and Philip shared. It had an iron bunk bed on one side, a large red pine chest of drawers and numerous model Airfix planes suspended from the ceiling on cotton threads.

From that first visit to stay with Charles and his family a lifelong bond of friendship was formed. Charles was like a brother to me. We had hours of fun together in that bedroom playing with the Hornby trainset, building Airfix models and Lego houses. As we got older, we both enjoyed games of chess, draughts and monopoly. I remember one of the first pieces of woodwork Charles made at secondary school, was an oak coffee table with an inlaid chess board.

To me, the Rymer's family home was always full of excitement, laughter and entertainment. No matter what time I appeared I was always given a warm welcome. As we got a bit older Charles and I had total freedom to roam and explore wherever we wanted around Cherington. We had the complete run of Westrip Farm at one end of the village, and Coxes Farm at the other end with the overgrown Rectory garden in between. There was Cherington Lake and the stream, and Westrip Hill for testing out our soapboxes made from old pram wheels and, in the winter snow, numerous hills at Westrip for tobogganing down. I can remember

Charles, John, Philip and myself all on the bale sledge with nothing to hold onto hurtling over the top of the wall in deep snow at Westrip in the winter of '63!

These were happy times especially at haymaking and harvest time when it was 'all hands on deck' to get the crops in. All my holidays and free time were spent with Charles on the farm, probably first as a hinderance to farm workers Cecil and Norman trying to do their work, but as we got older a welcome extra pair of hands.

Having worked on the farm every school holiday and at other times it was a natural progression for Charles to take on a full-time role on the family farm of Westrip.

Charles and his parents left Westrip and the Gastons in 1974 and moved first to Shipton Moyne and then into Charles' late aunt's house in Northfield, Tetbury. The family subsequently moved to Avening from where Jack and Charles ran Hailstone Farm together.

During Charles childhood the family would escape from the daily toils of the farm and head over to South Cerney sailing club. Charles was a keen dingy sailor and through the sailing club he made many good friends and became a proficient sailor; in tune with the wind and observant of the weather patterns, he quickly mastered the helm and often won races. Charles first learnt to swim at Aston Farm, home of Captain Vasey Davis, in his unheated swimming pool amongst the newts.

Charles loved the sea and boats, enjoying many sailing holidays at Hayling Island and Newquay, Wales. He passed his driving test when he turned 17 and was given a Morris Minor by his aunt. The following month Charles and I set off on a road trip to the west of Scotland. I wasn't old enough to drive so Charles had to do all the driving. We covered 1,700 miles and got as far north as Ullapool, over to Applecross and around Mull to Iona by ferry. We returned safely, just in time for me to commence my 'O' level exams the next day!

Charles and his brothers went on several skiing holidays to Italy and Yugoslavia. Philip recalls how quickly Charles learnt to ski and how he remembered far more than his brothers on the next ski trip. He also recalled how Charles was never afraid to try out his foreign language skills conversing with the locals.

These early trips abroad inspired Charles to go on more adventures abroad. His first solo trip was to Australia to visit his uncle (Jane's brother Humphrey who was farming at Port Macquarie in NSW). Other trips abroad included France and Italy, where he enrolled on language courses whilst visiting the sights of Bordeaux, Rome, Florence and Pisa. Charles had a real interest in languages, cultures, local geography and farming methods. He particularly loved Italy and on his return from his first trip joined the Italian society in Cheltenham. Through this group he made new friends and it was through the society that he first met Beverley in 1986.

Their friendship grew and they became engaged in 1987 and married in this church on 21<sup>st</sup> May 1988. I chauffeured Charles and Beverley to their wedding in my vintage

Jowett and on to the reception at the Hare and Hounds, Westonbirt. Marrying a Yorkshire lass, the Jowett (also from Yorkshire) was the perfect car. Beverley's father told us he remembered the factory at Idle near Bradford where they were made. Last summer, thirty-one years later, we took the Jowett out for a spin together round Miserden Park and reminisced about their wedding day.

Charles and Beverley started married life at Sunground, Avening. Charles was working with Jack at this time at Hailstone Farm and continued to do so until Jack retired in 1994. This signalled new beginnings for Charles and he decided to follow his interest in woodwork and was offered a job by Graham Williams at Cherington Lane Forge in the joinery shop.

James was born in March 1995 and in September 1997 Charles and Beverley made the short move to Millbank in Rectory Lane. This house offered them more accommodation and a large sunny garden to grow soft fruit and space for Charles to continue his woodwork. By this time he had left Cherington Lane Forge and became self-employed. He enrolled on a City and Guilds joinery course at Stroud College to develop his woodworking skills. Charles built up a loyal list of customers who gave him orders for garden furniture, rose arbours and bird tables. Garden benches were much in demand. Local builder Bruce Russell gave him commissions to make bespoke window frames. In addition to woodwork, Charles offered his customers a range of services from gardening, fencing and walling to maintenance jobs and running errands. At the same time Charles was on hand to help his parents and lend a hand in their large vegetable garden.

Charles, Beverly and James had many happy holidays together, exploring the Yorkshire Dales, Norfolk, Devon, Cornwall and Wales. Charles continued to hone his language skills on their holidays abroad to Italy, France, Spain, Malta, Istanbul, and Crete. Last year he and Beverley visited Seville and Lake Garda.

From woodworking, exploring new countries and learning a language, to buying a new car or a fine wine, Charles would always do in-depth research and could be relied upon to share valuable information when asked. Keen to develop and maintain his language skills, he recently joined Tetbury U3A French speaking group. Charles had a good ear, not only for languages, but also an appreciation and enjoyment of classical music.

Charles was also an avid photographer and member of Tetbury camera club. With his perceptive eye, attention to detail and camera skills he composed many fine pictures. He got a lot of pleasure from his photography and regularly entered his photographs at Cherington show and the camera club. Beverley commented to me that Charles also had a good eye for art, he had a knack of picking the most expensive painting in a gallery, before he saw the price tag!

Charles enjoyed playing skittles with the Tetbury League. Although he did not

quite have the 'strike' and his father's consistent high scores he enjoyed competing in different alleys around Tetbury.

Charles was compassionate, caring and interested in other people. Charles loved village life both at Cherington and Avening. He was a hive of knowledge about local history, he loved a bit of village gossip, and all the characters past and present. Charles was extremely public-spirited and made it his duty to get to know everyone, helping others and joining in. He contributed many photographs and articles to the village magazine about his ancestors and the old characters who lived in Cherington and Avening. The lovely cover photo of the latest winter edition of the Villager magazine was taken by Charles and depicts Longmans Barn Farm in deep snow, past home of our mutual friends the Pargeters. Charles loved village life; Cherington show was a highlight on the calendar in addition to Avening fete and the annual Three Counties Show when all who worked at Westrip were treated to a day out.

Charles was a lifelong supporter of the RNLI. He was first encouraged to collect for the lifeboats by his Aunt Joan who apparently made her collections to outlying villages on horseback. You could never escape Charles knocking on your door collecting for the life boats. Sorry Charles, I've got no change was met with Charles' response of "Don't worry, I'll come back tomorrow when you've found some. I never once heard him moan about the time and effort involved.

Charles' kindness and his desire to help others led to him getting a job at Avening school in 2001 as lunchtime and after school leader and general maintenance man. He was adored by the children and staff alike for his help and kindness, firm but gentle manner. After 19 years of service at the school he was due to retire this Christmas. Unfortunately, Charles was too ill to attend his last week at the school and say goodbye. Beverley now has the huge collection of hand drawn cards and messages of thanks from the children and staff – a tribute of how much he was liked by everyone.

Charles had a great sense of humour and enjoyed a good laugh. He loved satire comedy shows such as Monty Python's Flying Circus and Faulty Towers. He also loved sharing anecdotes, often about local characters who had long since passed on. Charles was perceptive and a great observer of people. He had the knack of recalling past characters in fine detail. In fact, Charles had an amazing memory and clarity of mind about people, dates, places, and special occasions.

Charles was a devoted husband to Beverley and proud father of James and all his achievements.

Always calm, modest, kind and appreciative, Charles was a lovely man who will be sorely missed by everyone.

***John Sproule***

## Have you been Christened?

Come and celebrate your Baptism at  
our Candlemas Service



**11.00 am, Sunday 2<sup>nd</sup> February**  
**Avening Church**

If you have your Baptism Candle do bring it with you  
and we will light it.

If you (or your child) have not been Christened but  
would like to think about it, please get in touch:

Revd Gerald South 01453 883456

[gp.south@btopenworld.com](mailto:gp.south@btopenworld.com)

## Thinking of getting married? Too costly? Where?

It seems that the average cost of a wedding last year was over £30 000. Does that mean waiting until the funds are available, or building up a debt? Not necessarily. There are much less expensive ways for those who may feel that the joy of a wedding for themselves, shared with their friends and family, does not call for extravagance.

For some ideas on this see, for example: [www.moneysavingexpert.com/family/cheaper-weddings](http://www.moneysavingexpert.com/family/cheaper-weddings)

Where will the wedding take place? Marrying in church is personal, meaningful and spiritual - just as you want it to be. Churches are special and unique places to get married in: the prayers, promises and the whole service of celebration become part of your marriage, on the day itself and beyond. For more information please see:

[www.churchofengland.org/life-events/weddings](http://www.churchofengland.org/life-events/weddings)

or contact Revd Gerald South

(01453 883456 or [gp.south@btopenworld.com](mailto:gp.south@btopenworld.com))







## NHS Patient Choice - You have the right to choose



Do you know you have the right to choose where to have your  
**NHS treatment or surgery?**

Do you also know how many **NHS** services you can access locally  
by asking your GP or orthopaedic triage team for **Tetbury Hospital?**

**Minor Injuries (not 24 hrs) • X-ray Department • Day Surgery Unit • Physiotherapy**

Our specialties include:

**Cardiology • ENT • Gastroenterology • General Surgery (hernias)  
Gynaecology • Ophthalmology (eyes) • Oral (teeth)  
Orthopaedics (hand & wrist, foot & ankle, knees, hips, podiatric, spinal)  
Pain Management • Respiratory • Urology • Vein Surgery  
Vasectomy**

We are open Monday - Friday from 08.00 (excluding public holidays)

Minor Injuries 08.30—16.30 (last walk in at 16.00)

X-ray 09.00—17.00

Call our friendly team on 01666 502336 or visit [tetburyhospital.co.uk](http://tetburyhospital.co.uk)

# Longfield Community Hospice, Minchinhampton

## Can you spare a few hours a week volunteering?

We have been providing **free** community hospice care in Gloucestershire for more than 30 years. We believe everyone touched by a life limiting illness should benefit from free hospice care. We support people and their loved ones to live well and when the time comes, we enable them to have a choice of dying in the comfort of their own home. We offer not just a helping hand but a listening ear and a warm welcome to families in need in the community, supporting them to cope better with the impact of their illness on their lives and bereavement.

One of our volunteer van drivers and Trustee, Brian, expressed his thoughts with us recently. When his wife Jan died of breast cancer Brian had one to one counselling and attended group sessions. It was here that he met a new partner, Sue. Sue was passionate about Longfield and was also a regular volunteer. Sue sadly fell ill with lung cancer and Longfield were able to support her offering her a wide range of services. After Sue died, Brian wanted to give something back to Longfield and he became a regular volunteer. As Brian said, "Longfield is there for everyone, whether you are a patient, carer or a loved one. Please do what you can to help support its work".

So please would you consider become a volunteer? Without the support and commitment of our amazing volunteers, Longfield would not be able to deliver the services that Brian spoke about. Not only would you be helping a very worthwhile organisation, it would also be an opportunity for you to meet new friends, develop and learn new skills but also have some fun. Whether you are a mum wanting to return to work or are retired and have some free time please get in touch.

We have volunteering opportunities across the whole organisation. Perhaps retail volunteering may be your interest, dealing with customers, working on the till and organising stock rotations? May be you fancy working on our vans, visiting our shops and warehouse, dropping off and picking up stock? Alternatively, some volunteers enjoy helping to bring our patients to site for their day therapy, help us provide hospitality to our patients or help in our back office functions like Finance or Fundraising. At Longfield, we have a beautiful garden; many volunteers spend time keeping our garden in order, planting and weeding, pruning and mowing.

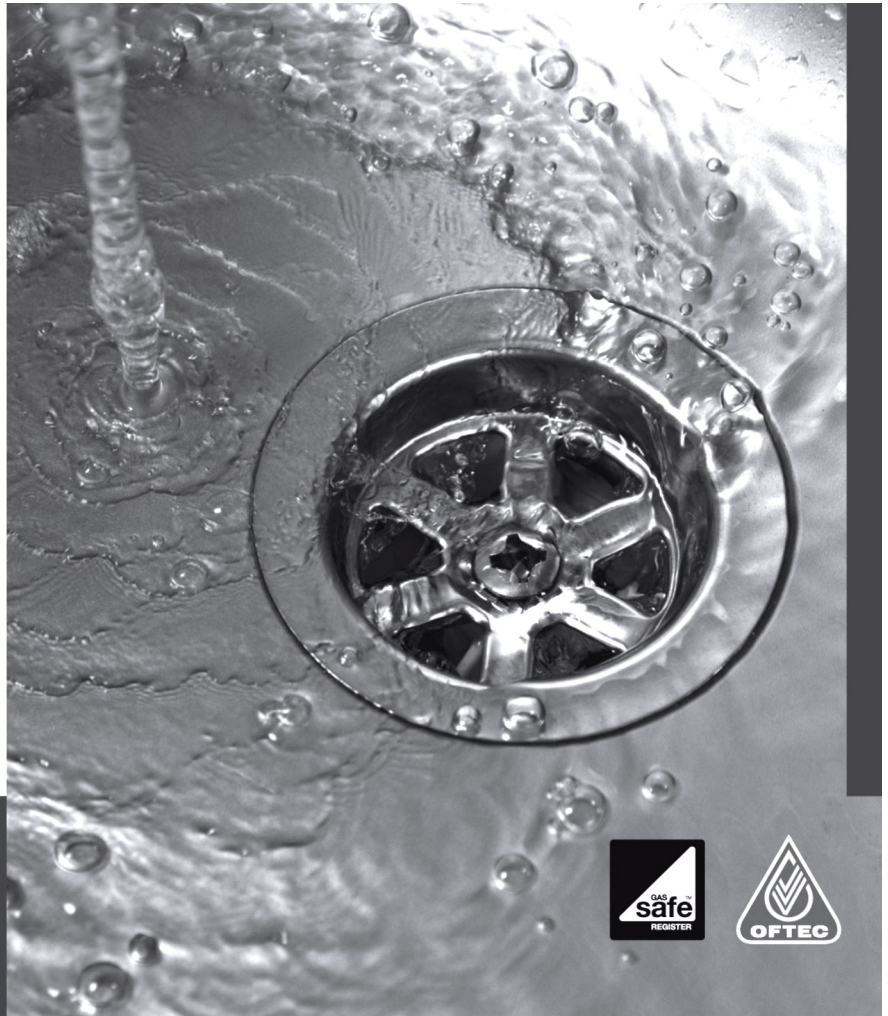
No matter how much or how little time you would like to volunteer at Longfield, all help is gratefully received. We can fit around your availability as we know your time is precious. If you are interested in volunteering, please either call the Hospice (01453 886868 and ask to speak to Volunteer Services), email us at [volunteer.services@longfield.org.uk](mailto:volunteer.services@longfield.org.uk) or see our website ([www.Longfield.org.uk](http://www.Longfield.org.uk)) for further details of opportunities. Without your support, we could not provide free care at the end of life to patients, carers and families.



**Plumbing  
& Heating**  
(Cotswold) Ltd

- Oftec and Gas safe registered
- Boiler replacements
- New build and renovations
- Heating updates and alterations
- Underfloor heating
- Bathrooms
- Water softeners
- Over 35 yrs experience
- Tetbury based

Clive Alley t: 07584414624  
Scott Wilkins t: 07717750247  
e: scott@awplumb.co.uk  
www.awplumb.co.uk



## Learn to see life's magic again

Like in the fairy-tales of old, you get  
3 Wishes – what will you wish for?

Take this opportunity to remember  
your dreams and find out how Spell  
Your Life can help you get what you  
really want out of your life.



**SPELL YOUR LIFE™**

Call Claudia on **07867 350122** for your 30-minute free session – and your 3 wishes!

# Puzzle Corner

6			2	5				
	5	1		4		9		3
2		9						
8	1			2	5	3		
3		5				6		9
		7	1	3			8	5
		4				8		7
5		8		6		4	9	
				8	3			6

Answers on page 30

## Sudoku

Fill in the blank squares so that each row, each column and each 3-by-3 block contain all of the digits 1 - 9. If you use logic you can solve the puzzle without guesswork.

### Across

1. Counting device (6)
4. A forceful consequence (6)
9. Deport (5)
10. Relished (7)
11. Act of deliberate betrayal (7)
12. Movable staircases (5)
13. Easily handled or managed (6)
15. Lithe (6)
19. Device in a brass wind instrument (5)
21. Oval (7)
23. Slowly moving ice mass (7)
24. Large artery (5)
25. Throws out (6)
26. Sternutation (6)

1		2		3			4	5		6		7
						8						
9						10						
11								12				
13		14					15	16				17
						18						
19				20		21				22		
23								24				
25							26					

http://www.puzzlechoice.com

### Down

- |                                      |  |   |
|--------------------------------------|--|---|
| 1. Turned away or aside (7)          | 7. Periodic rise and fall of sea level (5) | 17. Promote (7)                         |
| 2. Similar (5)                       | 8. Deceive by mock action (5)              | 18. Prolonged period of time (5)        |
| 3. Kitchen implement (7)             | 14. Assemble in proper sequence (7)        | 19. Undefined (5)                       |
| 5. Commissioned military officer (5) | 16. Scoundrel (7)                          | 20. Live (5)                            |
| 6. Unfathomable (7)                  |  | 22. Sum of money offered as a prize (5) |

# Avening W.I.

Welcome to 2020 and the start of a new year with an exciting programme of activities being planned as we celebrate 90 years of the WI in Avening. Liz Knowles has been elected as our new president and Pat Gardiner has taken over as treasurer, after many years of sterling service by Shirley Hand.

We have started the year with an informative talk by Jennie South and Clare Bebbington on the Dementia Friends scheme, which raises awareness and aims to change the way people think, act and speak about dementia. The evening provided an excellent opportunity to talk and share experiences of living well with dementia.

Other activities in January included a visit to Leaf and Ground, a new farm shop, garden centre, play area and café set in 20 acres of grounds near Dursley. The beautiful new oak frame and Cotswold stone buildings also have a lovely terrace with great views over the Severn Vale and along to the Malvern Hills. A well-constructed pathway winds up the hills behind, and links with the Cotswold Way near Stinchcombe golf



course. We had good aerobic exercise walking up into the woods and then great views as we descended again and took a stroll around the lake. We then enjoyed a visit to the garden shop and deli before a very tasty lunch with local ingredients. We can certainly recommend a visit and were glad that we had booked a table as it is already very popular.



Our speaker for February is Claire Salmon, a member of University of Gloucester WI, who has developed a range of cloth dolls with attitude. This includes the WI Dolly which can be individually personalised if required. The talk and demonstration will take place on Thursday February 13<sup>th</sup> at 7.30 pm in the Memorial Hall. Visitors and prospective members are always welcome.

For more information about Avening WI please contact our secretary Soo Rolfe on [aveningwi@gmail.com](mailto:aveningwi@gmail.com) or visit our website <http://aveningwi.wordpress.com>

***Helen Haiselden***

# Avening Community Cafe



Jim Hill plays the first few notes of *What a Wonderful World* and slowly, ever-so slowly, the band - Adrian, Brian, Alan and Dave - joins in. The audience falls silent. It was an unforgettable piece of Café magic for everyone in the Member's Bar on New Year's Eve. We all remember others – who can forget the phone- and arm-waving joy of Mel Young's rendition of Robbie Williams' Angels, or the sight of toddlers 'tidying up' bean-bags twice their size at the sell-out *Lion King* Movie Matinee – but perhaps the best of all was seeing so many

customers come along to the Café with their family and friends.

The Café's growing popularity continues to be a tribute to the volunteers who make them happen – no more so than during the busy Christmas period. Special mention goes to our three 'doublers' – Sue Osborne and Elizabeth and George Buchanan – who not only gave up their New Year's Eve but who then came back for more the week after to run their second Café on the trot.

Did you catch the wonderful interview with Café bakers Chisholm Barnett and Louise Watson (who also did the illustrations) on Faye Hatcher's radio programme on BBC Radio Gloucestershire in December? They were talking about the Café's Little Book of Baking. Although Chisholm told Faye, 'you never really own a recipe', you can of course own the book! Every penny goes back to the Café to help us run events and keep prices low. Our much-loved cakes are now being baked around the world with copies sent as presents to Canada, New Zealand, the US and even Swindon (where word reaches us that the cheese scones are going down a treat).

On February 4<sup>th</sup> we'll be celebrating Avening's long connection with the Oscars, starting with Michael Powell's nominations in the 1940s, continuing more recently with Richard E Grant's Best Supporting Actor nomination for *Can You Ever Forgive Me* and this year Thelma



Schoonmaker, already a multi-Oscar winner, is nominated for Best Film Editing for her work on *The Irishman*.

On February 11<sup>th</sup> we will repeat our popular St Valentine's Café: if you bring a first-time customer we will treat you and your guest to half-price hot drinks. We'll also be giving away 25 Gift Cards for customers to pass on to friends and neighbours who haven't yet visited the Café. Greta Thunberg's book *No One is Too Small to Make a Difference* is the choice for our first Café Book Club, which will also be held that day. It's a book club with a bit of a twist – the chosen book won't be the sole focus but a starting point for conversations about the themes it covers, the author's other works, issues it raises etc. So if you don't fancy grappling with Greta, but do have views about climate change, teenage activism or any other related subject, please do still come along! And to make sure our little Café readers aren't forgotten Alex Adcock will be holding another half-term story time at 9.30 on the 18th. Our regular art class and Atlanta Rayner's Writing for Fun will take place on 18<sup>th</sup> and 25<sup>th</sup> February respectively.

We love a cliché so couldn't miss the chance to unveil our '2020 Vision' in early January, with old favourites and new surprises planned for every month of the year from Green Cafes and Movie Matinees to a Midsummer Night's Café on July 4th. The first of our special events is a Leap Year Saturday Pop-Up Café on February 29<sup>th</sup> – free coffee and cake for a year if you propose (and are accepted) at the Café itself. That's free coffee and cake for two, of course. Or just one if it all goes a bit pear-shaped....



**Clare Bebbington**

*Evening Community Cafe*



## **S Woodman Garden Services**



**General Gardening**  
**Grass Cutting ~ Hedge Cutting**  
**Tree Cutting ~ Fruit Tree Pruning**  
**General Ground Clearance**  
**Good Rates / O.A.P Discount**

**Please Call: Home: 01453 834744 Mobile: 07814206803**



# Avening Playgroup

Happy New Year from the children, families, staff and committee at Avening Playgroup!

We would like to welcome the new children and their families to playgroup and hope they enjoy their time with us. We would also like to say welcome back to Debbie who is currently helping out with some supply work.

Since the last article we have had the Christmas Extravaganza and would like to thank everyone who supported it. We were thrilled to see Father Christmas and thank him very much for visiting us. We would like to thank the village for all the generous donations of toys, books, bottles, cakes and money.

A big thank you also goes to the Cinema Club who donated money to the playgroup after their showing of 'The Lion King' and to Avening Angels who collected money whilst carol singing. We are now in a position to look at improving our outdoor area and shall start off with replacing the climbing frame and slide, which the children get so much pleasure out of.

This term the children have been describing, finding, colouring and comparing different shapes. They have been doing lots of jigsaws and making shapes out of playdough. They have also been practising their cutting skills and have cut around circles, triangles and squares.



The dressing up area has been a particular favourite with the children, so far this term. They have had lots of fun dressing up in various outfits and walking around in the dressing up shoes.

We are currently looking at the 2020-2021 school year in order to plan time tables so if you would like your child to join our lovely playgroup please phone 01453 832695 or email [aveningplaygroup@gmail.com](mailto:aveningplaygroup@gmail.com) in order to reserve your place.

You are also very welcome to come and visit our newly spruced up building. Please contact us to sort out the most convenient time.

**Angie Heslop**



# **O.L.Cottle**

## **Family Business**

**Hand Carved Memorials : Cremation Plaques**  
**Additional Inscriptions : Renovations and Cleaning**  
**All Types of Stonework**  
**Tel: 01453 762877**  
**36 Slad Road, Stroud, Gloucestershire**

# **PETER JOY**

Sales & Lettings

## **Sales**

01453 833747 [nailsworth@peterjoy.co.uk](mailto:nailsworth@peterjoy.co.uk)

## **Lettings and Management**

01453 833847 [lettings@peterjoy.co.uk](mailto:lettings@peterjoy.co.uk)

**PROUD SUPPORTERS OF AVENING PLAYGROUP**

## **Carpet and Upholstery Cleaning Specialists**

### **Barden Clean**

- Ultra fast drying times
- Environmentally friendly
- Removes stains
- High temp – sterilises carpet
- Improves air quality
- Removes dust mites
- Fully insured

***CALL NOW***

**Michael Denley**

**01453 752893**  
**07541 002 891**

**[www.bardenclean.co.uk](http://www.bardenclean.co.uk)**



# Avening School

## A Time to Reflect

During the Christmas break, it was with much sadness that we heard that our much loved Midday Supervisor, Mr Rymer, who retired at the end of the Christmas term, passed away suddenly and unexpectedly. On his retirement, some of the children wrote him very special memories which reflect just how much he was thought of by everyone who knew him and which seem poignant to share on this sad occasion:

- *'I remember when I first came to this school and I could tell that I would love it here and one of those people who made me feel welcome was you. You made sure that I had everything I needed and told me how everything works. It was very helpful and I don't think I would have survived without you, so I wanted to say thank you.'*
- *'I really appreciate everything you've done for me and helped me with. I will always remember you as the best lunchtime supervisor.'*
- *'I will miss you when you go. It will be very different here without you and I am sure everyone will remember you and miss having you around.'*
- *'Mr Rymer - Special dreams'*

It was not only being a midday supervisor that Mr Rymer was known for at school. He would volunteer his time to listen to children read on a weekly basis which at a time when resources and learning support are stretched nationwide was hugely important to the development of our pupils and greatly appreciated by the staff. Mr Rymer was also a valued member of our Kites after school club team. His kindness, incredible patience and wisdom will be missed beyond words. Our thoughts and love are with his family at this difficult time.

With every new term come new class topics with the Kestrels and Owls classes travelling back in time with history as their focus. The Kestrels (y1/2) will be looking at all things medieval in their topic on 'Castles', while the Owls class (y5/6) will be exploring ancient Mexico in their focus on the 'Mayans'. Meanwhile the Hawks class will be donning their wellies and raincoats as they follow the source of the river from Avening to the Severn as they learn about 'rivers' for their term topic. There will be lots of princes and princesses in the Eagles reception class this term as the class find out everything there is to know about 'fairy tales'.

Our annual trip to the NEC arena In Birmingham took place last month and as usual staff were immensely proud at the behaviour and collaboration of our pupils. Parents watched from an audience of thousands as 6,000 children from schools across the counties joined together to perform songs ranging from Queen Hits to modern pop songs.

The KS2 children have another trip to look forward to in February when they travel to Stratford upon Avon to watch a performance of the David Walliams hit novel 'The Boy in the Dress'. This visit leads up quite nicely to our much anticipated annual World Book Day celebrations at the beginning of March. More details of this will be in our next article.



Our Avening sports stars have been representing the school already this term with a football tournament at Cirencester Arena and a whole class gymnastics event for the Hawks class at SWR School in Tetbury and also a similar event for the same class at Deer Park school in Cirencester. Our cricketers also took part in a 'Chance to Shine Cricket' event at the end of January. Meanwhile our after school sports clubs have commenced with netball, tag rugby and football on offer for our Ks2 pupils.

***Alex Adcock***

*For further information about this busy place of learning please see our school website: [www.avening.gloucs.sch.uk](http://www.avening.gloucs.sch.uk)*

***Some quotes from the school log books:***

**4 Jan 1898:** Mr Calcutt gave his annual treat to all the scholars. The treat consisted of a bountiful tea, followed by a conjuring entertainment admirably given by Mr Boulton of Cirencester.

**11 April 1898:** The school was closed from 3 Feb to 12 April on account of the existence of scarlet fever on the school premises, by order of the Rural Sanitary Authority.

**25 November 1898:** Miss Chandler still absent. She has been suffering from face-ache for some time.

**24 October 1899:** A boy received a sound flogging for writing an obscenity on a slate during the scripture lesson.

**13 November 1899:** Below average attendance this week due to coughs, colds and eruptions on the face.

**16 November 1899:** Elsie has cut the top of her finger off while helping her father in Nagshead flour mill.

# Wild About Avening



While November and December were largely dull and grey, the one splash of brightness we could rely upon was the bright red breast of the robin bobbing around the garden. So familiar and well-loved is the Robin that in 2015 it was voted Britain's national bird.

Robins are found all year in the UK although a few will migrate to spend winter in Spain or Portugal, with others arriving from Scandinavia to overwinter in our milder climate. Males will fiercely defend their territories year round, using their distinctive red breast as a visual signal to attract mates and deter rival birds. Fighting for territories

begins with males singing loudly at each other, while each tries to get to a higher perch in order to show off their red breast most effectively. If one of the competing males doesn't back down during the sing off, fighting may often follow, with up to 10% of adult robin deaths being attributed to clashes over territories.

The British Trust for Ornithology's Breeding Bird survey found a 15% decline in the abundance of adult robins for 2019 despite a significant increase in their productivity the year before. This suggests that the young robins of 2018 fared badly in the winter of 2018/19. Migrating robins also face many challenges. They make up some of around 25 million songbirds that are being shot and trapped as they migrate to and from mainland Europe, with many being skinned and eaten whole as a 'delicacy' in some countries. Despite being illegal, the killing of these song birds continues, driven by organised crime gangs who make millions on the black market.

By contrast, in the UK we have a great fondness for robins and some of this must come from their association with Christmas. This began in the Victorian era when the bird gave its name to the first postmen who delivered mail in smart red uniforms. These mailmen became known as Robin Redbreasts and at around the same time Christmas cards took off commercially, with illustrations of robins actually delivering the mail becoming commonplace and securing the bird's association with the festive season.

If you spend any time in the garden you will probably find yourself being accompanied for some of the time by a robin. As robins take most of their food from the ground it is thought they have come to view our gardening activities as an easy way to grab a meal, scavenging the worms we helpfully unearth for

them. As most people welcome the sight of the robins this behaviour has persisted as they have learnt that they have little to fear from us. In fact, the earliest record of the robin's tameness comes from the 6th Century AD, when St Serf of Culross in Fife was recorded as having fed a robin that perched on his head or shoulder as he prayed.

If you want to help robins and other songbirds the best thing to do is to put out food for them, especially during the winter months. Robins will eat nuts, suet, fruit and mealworms and if these are on offer they will readily come to your bird table and you will be rewarded with their beautiful, clear song from morning to night.

### **Recycling at Avening Primary School**

Don't forget to keep your old toothbrushes, toothbrush heads from electric toothbrushes, toothpaste tubes, packaging, dental floss containers etc. and drop them in the box at Avening Primary School. So far we have prevented over 800 of these items from ending up in landfill or being burnt. Instead these have been recycled into other products.

The school is also collecting crisp packets (no other packaging please). Please also drop these off, keeping them flat to make it easier to return them. We have saved over 2,500 crisp packets from being binned so far. With these two recycling schemes the school has also earned nearly £30. Please keep helping us do our bit for the planet as well as making 'cash from trash' that the school can put to good use.

*Phoebe Carter*

## **Avening Baby & Toddler Group**

**Mondays during term time 1pm – 3pm.**

**At Avening Playgroup, The Sunground, GL8 8NW.**

The group is open to everyone with preschool children, so if you're a parent, grandparent or carer of a little one aged 0-5 then do come along!

*Please note the group runs during term time only, so there will be no session during half term (Monday 17th February).*

The cost is £2.50 for an adult and child, plus £1 for each additional adult/child over 6 months.

For more information contact Katy Upton: 07806 614753  
katywingrove@hotmail.co.uk

# Puzzle Corner

6	8	3	2	5	9	7	4	1
7	5	1	6	4	8	9	2	3
2	4	9	3	1	7	5	6	8
8	1	6	9	2	5	3	7	4
3	2	5	8	7	4	6	1	9
4	9	7	1	3	6	2	8	5
1	6	4	5	9	2	8	3	7
5	3	8	7	6	1	4	9	2
9	7	2	4	8	3	1	5	6

A	B	A	C	U	S		I	M	P	A	C	T	
V		L		T		F		A		B		I	
E	X	I	L	E		E	N	J	O	Y	E	D	
R		K		N		I		O		S		E	
T	R	E	A	S	O	N		R	A	M	P	S	
E				I		T				A			
D	O	C	I	L	E		S	V	E	L	T	E	
		O					Y	I				L	
V	A	L	V	E			E	L	L	I	P	S	E
A		L		X			A		L		U		V
G	L	A	C	I	E	R		A	O	R	T	A	
U		T		S		S		I		S		T	
E	J	E	C	T	S		S	N	E	E	Z	E	



## YOUR Community ALERTS Gloucestershire



Sign up today for local news and alerts in your community.



By registering today you will receive news and appeals, local crime information and crime prevention advice - directly to you.

Registering with us is completely free.



It will also help your local policing teams better police your neighbourhood.



[www.yourcommunityalerts.co.uk](http://www.yourcommunityalerts.co.uk)



## FOREVER YOUNG OVER 60s LUNCH

1<sup>ST</sup> Wednesday of each month 12.30 start

**Avening Social Club**

Phone Chris Howell on 01453 833246 to book your lunch

Main course, sweet and tea/coffee all for £6.00

A big thank you to all who have supported us in the past



# Avening Cinema Club

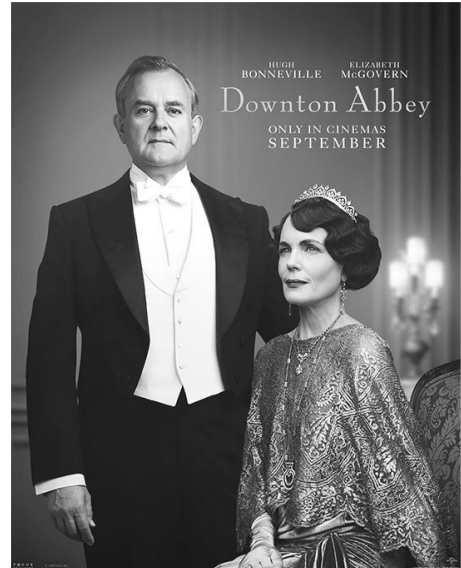
Thursday 6th February at

7.30pm

Avening Memorial Hall

**DOWNTON ABBEY**

Admission £5



The beloved Crawleys and their intrepid staff prepare for the most important moment of their lives. A royal visit from the king and queen of England soon unleashes scandal, romance and intrigue -- leaving the future of Downton hanging in the balance.

The film club is a not for profit community event. Any profit made after screening/licence costs will be donated to local charities.

Please do check our Facebook page or contact Katy Upton for more information and for the chance to vote on films.

Phone: 07806 614753. Email: [katywingrove@hotmail.co.uk](mailto:katywingrove@hotmail.co.uk)

## Church Floodlighting



The church was floodlit on 6th December in loving memory of

**Sarah Evans**

The church looks beautiful at night when floodlit. If you would like to have this in memory of a loved one, or to celebrate a special event, contact: **Paul Brown 01453 835983.**

The cost is £10 for 2 hours



# Avening Youth Club



Youth Club has been very popular during the past year, with up to 20 young people coming each week. It is lovely to see new and old faces, and we hope that you'll continue to enjoy it during this year. If you haven't been before, come and give us a try!

## February: what is love?

4<sup>th</sup> Board games night! Play your favourite games.

11<sup>th</sup> Crafts night! Create crafts based on this month's theme.

18<sup>th</sup> Half term CLOSED

25<sup>th</sup> Sporty night! Join in with a range of different sporting activities.

**Check out the Facebook Page:** Youth Club is for anyone aged 8 to 14, from Avening, Nags Head, or Cherington. We meet every Tuesday in term time from 6 to 7.30 pm at the Memorial Hall. Once you're 13 we'll ask you to be a Young Leader and help out (don't worry, we'll give you training).

Cost is just £1 a time to include a healthy snack. Just come along and see what's what if you haven't been before.

**For parents or carers:** The Youth Club is run by The Door (find their website at [www.thedoor.org.uk](http://www.thedoor.org.uk)). They provide qualified and experienced Youth Workers. You just need to leave an emergency contact number when you drop your young person off. If they come on their own, we need them to give us a number to contact.

**Want more information?** Contact Rev Gerald South on 834884 or John at The Door on 01453 756745.

## Letter to the Editors

Since the bad weather, dark mornings and nights there has been a marked increase in the amount of dog faeces left around the village and the playing field. It makes all dog owners look bad; a lot of owners do clean up after their dogs but the irresponsible are letting everyone down.



Faeces are toxic to people, they can cause cramps, diarrhoea, blindness and much more.



# BELL HOUSE

Dental Practice

- **Dentistry for all the Family**
- **Private and Denplan**
- **Cosmetic treatment**
- **Tooth whitening**
- **Hygienist**



Robert W. Carter B.D.S.  
7 New Church Street . Tetbury . Gloucestershire . GL8 8DS  
Telephone (01666) 503788

0100315



## Fred Stevens Funeral Directors

We give immediate attention – 24 hours  
Traditional and contemporary styled  
funerals arranged  
Individual, flexible approach  
Well established, family-owned company with highly  
experienced staff

Newmarket Road, Nailsworth, Gloucestershire GL6 0DQ  
telephone 01453 832188  
email@fredstevens.co.uk www.fredstevens.co.uk



## TONY'S CHARITY QUIZ NIGHTS

THE BELL, AVENING

1ST SATURDAY OF THE MONTH

£1 A PLAYER: A MAXIMUM OF 4 PLAYERS PER TEAM

ALL PROCEEDS TO THE COBALT APPEAL, CHELTENHAM



# Avening Community Café Crop Swap



## From a Volunteer's Perspective

Last year saw the first Seed, Plant, Crop and Produce Swaps at the Avening Community Cafe. We hope that 2020 will see this flourish, offering even more locally grown, lovingly prepared and kindly donated garden gifts to Cafe visitors.

The weather may be grim right now, but this provides gardening enthusiasts the perfect excuse to grab a coffee and take time to peruse the numerous seed and plant catalogues landing on their doorsteps. If you find yourself with a surplus of seeds don't forget, you can: a) packet some up to give away at the Seed Swaps; b) sow a few extra for the Plant Swaps; c) grow some extra produce for the Veggie table; and even d) cook up a few extra jars of your favourite jams and preserves for the Produce Table!

Crop Swap Season starts on March 3<sup>rd</sup> with a Surplus Seed Swap. Bring along any unneeded seeds to swap or donate, any spare catalogues to brighten up the table and any growing tips and ideas you may have. If you have any spare pots bring them along too.

There'll be a second Seed Swap at our Green Café in April and Plant and Seedling swaps later in the year. We'll set up a surplus home-grown Produce Table over the summer and autumn months, but if your growing season starts early, please do bring along your green-fingered surpluses. We've also started making Little Café Taster Pots available to anyone making preserves – for those inconvenient half-jars and extras that always feature when you're bottling jams and chutneys. Please help yourself to a jar and bring along to the Café to swap and share – we're right in the thick of marmalade season after all!

Spare seeds, seedlings, bulbs, perennials, shrubs, cuttings and produce, along with any offers of help with the Crop Swap table will all be warmly welcomed... thank you in anticipation of any contributions you can offer. If you don't have anything to swap but would still like to sample the best that Avening has to offer you can always make a donation to our Café charities: The Mark Townshend Trust and the Stroud Women's Refuge – just pop the money in our Donations Watering Can (what else would we use!).

If you can't make it to the cafe but would like to contribute to the Crop Swap in any way then please get in touch... we'd love to hear from you.

Hope to see lots of keen Avening gardeners on 3<sup>rd</sup> March and plant the seeds of a productive gardening community over the coming year.

**Chandy Rodgers**

dental  
practice

townes  
townes  
associates

*Family Dentistry You Can Rely On*



[www.familysmile.co.uk](http://www.familysmile.co.uk)

Satisfaction rating:  
more than 99%

100% of patients  
asked would  
recommend  
us to family  
& friends

Quote 'Villager' for a 50% discount on a full New Patient Examination  
with x-rays for just £39.50. Telephone us on **01453 827474**



**Manufacturers of purpose made  
joinery of all types**

**Tel: 01453 885075**

Email [gkjoinery@googlemail.com](mailto:gkjoinery@googlemail.com) [www.gkjoinery.com](http://www.gkjoinery.com)

**Traditional  
Acupuncture**

**Holistic Massage**

With Paloma Sparrow  
At the White Practice,  
Market Street,  
Nailsworth

& St Luke's Therapy  
Centre, Cainscross  
Road, Stroud

**Dove Therapies**



**Supporting health  
through life**

Free 20 minute  
consultation - in  
person or by phone

For more  
information or to  
book an  
appointment

07528 374 002

[hello@dovetherapies.co.uk](mailto:hello@dovetherapies.co.uk)  
[www.dovetherapies.co.uk](http://www.dovetherapies.co.uk)

# Tetbury and District U3A

## Talks At the Goods Shed

Date	Speaker	Title of Talk
February 19th 2020	Sharon Stevenson	Conservation of Dolphins and Whales
March 19th 2020	Sue Limb	Winter and Broadcaster: "What's so Funny"
April 15th 2020	Dr Mike O'Donnell	Blood Hound Land Speed in cooperation with schools
June 17th 2020	Lynda Warren	Characters of the Titanic
July 20th 2020	Richard Burton	Gardening at The Court in the early 20th Century

## Mobile Post Office

### Tuesday 10.30 - 12.15 at Avening Social Club

Overheard at the café - 'Oh no! I have just been all the way to Tetbury and queued for twenty minutes to post a parcel! I completely forgot about the post office van coming here!' Easy to forget all sorts of things in the run up to Christmas I know, but here for everyone is a reminder!

With kind permission of Derrick Ind and the Social Club, the Post Office van is in the village every Tuesday 10.30 am til 12.15 at Avening Social Club. They offer most of the things that can be done at a normal Post Office branch, (with a few exceptions). In addition to buying stamps and posting parcels customers are finding it very convenient to be able to make cash withdrawals, pay in cheques and order foreign currency. The van carries some stock from the two stores it operates from, including a range of cards and stationery, batteries, gift wrap, and seasonal items. The Mobile Post Office is fully equipped with a tail lift ideal for wheelchair or mobility scooter.



The number of customers has rocketed since the timing and venue were revised last September. This is, in no small measure, due to the excellent service provided by Carole and Eric behind the counter, who are so cheerful, patient and helpful. And of course, being able to pop in to the café for a great coffee and cake is quite an attraction!

*Jennie South*

# *Nailsworth Domestic Appliance Repairs*

*A reliable, fast & friendly service*

*Washing Machines,*

*Dishwashers,*

*Tumble Dryers,*

*Fridge-Freezers,*

*Electric Cookers . . .*

*No Call - out Charge*

*01453 ~ 833310*

## **NAILSWORTH ACCOUNTANCY**

ACCOUNTANCY SERVICES FOR SELF EMPLOYED AND  
LIMITED COMPANIES

Self-Assessment Tax Returns  
Accounts Preparation For Small Businesses  
Company Accounts  
Business Start Ups & Company Formations  
VAT Returns and Tax Planning

For a competitive quote telephone Emma

01453 835050

TOWN HALL NAILSWORTH



## OSTEOPATHY & WELLBEING

Available at The White Practice

- Osteopathic treatment
- Medical herbalism & allergy therapy
- Acupuncture
- Cognitive behavioural therapy (CBT)
- Relationship, bereavement & counselling
- Massage

## Symptoms suitable for Osteopathic treatment

- Back pain/neck pain
- Leg pain/sciatica
- Headache/migraine relief
- Muscular skeletal pain
- Frozen shoulder
- Sporting injuries
- Antenatal care and neonatal care
- Cranial Osteopathy
- Osteopathy for mother and baby



Open 6 days a week 8.30am-8pm  
on selected days  
Emergency appointments available

14 Market Street, Nailsworth, Glos, GL6 0BX

online booking [www.thewhitepractice.co.uk](http://www.thewhitepractice.co.uk) 01453 832515



## NAILSWORTH

George Street

Tel: 01453 705560

**NOW OPEN**  
Including Saturday 2- 4pm



## TETBURY

23 Church Street

Tel: 01666

**503531**



[georgevetgroup.co.uk](http://georgevetgroup.co.uk)

# PETER SAVAGE

**ALL FENCING & GATES SUPPLIED & FITTED  
GROUNDWORKS AND LANDSCAPING UNDERTAKEN  
SEASONED FIREWOOD – LOGS & KINDLING**

**Tel: 01453 833239  
or 07785 788335**

# Cherington Parish Council

A belated “Happy New Year” -I’m Richard Smith - assuming the duties of Clerk to the Parish Council of Cherington from Beverley Rymer. Many thanks to Beverley for leaving matters in excellent order.

## Precept

Precept isn’t the Orwellian-sounding “general rule intended to regulate behaviour or thought,” as the dictionary would have it, but as you undoubtedly know it means the amount of your council tax bill given as a contribution to your local council. Cherington Parish Council’s first order of business at the meeting of January the 7<sup>th</sup> this year was setting Precept.

A detailed budget exercise, a debate about Council and Cherington Village ambitions and some time with a crystal ball prefaced a vote to leave the precept rate unchanged. I’m happy to be able to share the good news.

## Wider Council Issues

During the same meeting, County Councillor Hirst presented a report on the Cotswold District Council’s proposed budget, which I’ve published in full on the Cherington Parish Council website under “Minutes and Agendas.” If anyone has contributions for the website, by the way, please feel free to email me. I’d really like to help it to grow into a bigger and more active resource for villagers.

## Village Items

Councillors discussed and debated several issues, which the minutes of the meeting capture quite well, I think. (He said, modestly.) These are also on the web site and include reference to potential plans for Cherington Village Hall, the telephone box, grant applications and sundry other items. The Cherington Village Litter Pick deserves special mention, since it’s been scheduled for Saturday the 14th of March and provides not only a good opportunity for a spring clean, but a chance to meet the neighbours and to socialise, so please put it into your diary while it’s fresh in your mind.

**Next Parish Council Meeting** will be held on **Tuesday March the 3rd** at **6.00 pm** at Cherington Village Hall - and I’ll be placing an agenda on the notice board and on the website: [www.cheringtonpc.org.uk](http://www.cheringtonpc.org.uk). I can be contacted via email at [cheringtonparishcouncil@yahoo.co.uk](mailto:cheringtonparishcouncil@yahoo.co.uk)

**KP GARDENS for Logs & Kindling**  
Est. 1984

**KILN DRIED PREMIUM QUALITY  
FIREWOOD**

☎ **07813 790905 or 01666 503782**

- Premium Quality Kiln Dried Hardwood Logs
- Sustainably sourced
- Very clean burning (low smoke)
- Delivered to your door

email: [kpgardens@hotmail.co.uk](mailto:kpgardens@hotmail.co.uk)

# Avening Parish Council



Some of the items discussed at the meeting on 15th January 2020 are summarised below:

## **2020/21 Proposed Precept**

It was agreed at the meeting in December to keep the increase of the precept to 3% for the coming financial year. This will cover the usual running cost for the village, but larger projects and events will need to undertake fundraising.

## **Gloucestershire County Council Budget**

The budget for 2020/21 has been set at £468 million. A net increase of 31million on 2019/20.

There will be an increase of 1.9% on council tax. The Council will also apply the national social care precept of 2% to help meet the increased demand for adult social care.

## **Meeting Dates**

It was decided to trial holding the monthly council meeting on the 3<sup>rd</sup> Wednesday of every month.

## **Community Orchard**

Dr Phoebe Carter proposed planting a community orchard and wild flower area in the north-west section of the playing field. This has the full support of the Parish Council. Volunteers will be needed to help with the preparation, and any donation for trees, seeds and benches will be welcome.

## **Badminton Club**

Interested in learning to play badminton? A badminton club has been proposed for adults and children with coaching available – more information to follow.

## **Potholes**

Please remember that you can report potholes directly to Highways on 08000 514 514 or via their website [gloucestershire.gov.uk](http://gloucestershire.gov.uk)

## **Crime**

There were no crimes reported in Avening during November.

However, we have had more vandalism in the playground when one of the new gates was damaged. Every time we have to pay for a repair the budget for the refurbishment gets smaller.

One crime in December – a business burglary.

Please be watchful during the dark evenings and report anything suspicious.



## Planning Applications

No new planning applications.

## Decision Notices

19/03941/LBC: Herons Mead, West End: Erection of a single-storey side extension a rear timber framed porch, replacement of existing windows and repointing of existing external walls. Application Withdrawn

19/04231/TCONR: Rear 40, Sunground. Fell ash. No Objections

19/04235/TCONR: 7, Pike House Mews. Pollard Willow. No Objections

19/04155/TPO: West Wing Avening House. Tree works as per schedule. Permitted

20/00088/TPO: 16 Sandford Leaze .Reduce Turkey Oak. Noted

You can comment on any application on the CDC portal.

## Next Meeting

The next meeting is on Wednesday 19 February 2020 at 7.30pm in the Jim Parsons Reading Room

The Parish Clerk can be contacted via email: [parishclerk@avening-pc.gov.uk](mailto:parishclerk@avening-pc.gov.uk)

 <p><b>TOAD HALL</b> TRULL FARM TETBURY GL8 8SQ</p>	 <p><b>Your own private room for lunches, dinners, drinks, receptions, childrens parties, business meetings, exhibitions, film nights. Large screen and internet.</b></p> <p><b>Kitchen plus smaller room available. Outside or "inhouse" catering. A marquee could be added if required.</b></p> <p><b>For Bookings and prices please contact : Fi Mitchell <a href="mailto:fimitchell06@btinternet.com">fimitchell06@btinternet.com</a> 01285 841229 07885 094393</b></p>
--	---

# Dates For Your Diary

Thursday 6th February	Avening Film Club Downton Abbey	Avening Memorial Hall	7.30pm
Monday 17th - Friday 21st February	Half term holiday Avening Primary School and Play Group		
Wednesday 19th February	Avening Parish Council Meeting	Jim Parsons Reading Room, Avening Memorial Hall	7.30pm
Saturday 29th February - Sunday 1st March	Hedge-laying weekend	Avening Playing Field	tbc
Tuesday 3rd March	Cherington Parish Council Meeting	Cherington Village Hall	6.00pm
Saturday 14th March	Cherington Village Litter Pick	tbc	tbc
Monday 6th April - Friday 17th April	Easter holiday Avening Primary School and Play Group		
Friday 5th June - Sunday 7th June	Avening Photographic Exhibition	Avening Church	
Sunday 7th June	Avening Church Fete		

## ***A Bite to Eat?***

### **Arranging a Group Lunch, Christening other social event ?**



Avening WI 'Bite to Eat' scheme may be able to assist with your catering needs. We can provide and serve a selection of freshly prepared sandwiches, scones, cakes etc; a fork or finger buffet; or a two course meal.

**For prices and any further details phone Liz Knowles 01453**

# £20 OFF Your Next Service

Just hand this voucher to one of our friendly team members

**PLUS  
£5**  
donation to  
Avening School  
with your service  
when you hand in  
this voucher



- All Makes and models
- Dealer level diagnostics and servicing
- Free no obligation estimates
- local free pick-ups

for free, friendly, local advice give us a call

**01453 832871**

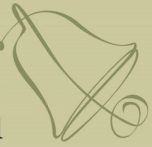
info@service-tech.org.uk  
www.service-tech.org.uk



Inchbrook Trading Estate, (A46) Bath Road, Nailsworth, Stroud, GL5 5EY

# The Bell at Avening

a traditional British pub serving a great selection of real ales and food



**OPENING TIMES:**  
MON - FRI: 5:30PM - CLOSE  
SAT & SUN: ALL DAY FROM 12 NOON

**LIVE MUSIC EVERY MONTH**

**FIRST SATURDAY OF EVERY MONTH IS  
QUIZ NIGHT**

*Little*  
**INDIA**  
at THE BELL

Little India @ The Bell, serving food from Tues-Sun 5pm-11pm  
Call **01453 836453** for great food to eat in or takeaway  
Visit our website for full menu

Call us on: **01453 836422** or e-mail us at **info@agpubs.co.uk**

[www.thebellavening.co.uk](http://www.thebellavening.co.uk)

Find us on Facebook  
by simply searching  
"Bell at Avening"



London Road  
Tetbury  
GL8 8SG

Come and visit us for Breakfast, Morning  
Coffee, Lunch, Afternoon Tea, Dinner, and  
Sunday Roasts

Plenty of parking and dogs welcome

## Opening Hours

Tuesday - Saturday 9am – 5pm

Friday & Saturday evenings dinner from 7pm

Sunday Lunch 12 – 3pm

(Closed on Mondays)

For more information please call

01666 502206 or visit [www.thetroublehouse.co.uk](http://www.thetroublehouse.co.uk)

