

# The Villager

A Magazine for Avening, Cherington  
and Nags Head

July 2019



[editors@acvillager.co.uk](mailto:editors@acvillager.co.uk)

# *Fieldfare Café* at Thistledown Farm



We're now open Wednesday to Sunday!

Our café is set in 75 acres of beautiful meadow and woodland overlooking Woodchester Park. We serve lunch from our wood-fired clay oven & charcoal BBQ Weds to Sun and brunch Sat & Sun. Fine teas, coffees & delicious homemade cakes served 9am to 4:30pm daily. Come up for an autumn walk and enjoy a hot drink with stunning views beside our woodburner!

You can join our mailing list for info on events such as vegan tapas, storytelling and foraging days. We stock delicious sourdough bread, Organic milk, our own preserves and more. Meats are free range and we use local and Organic produce wherever possible. Dogs are welcome on leads and we have baby changing and disabled facilities.

---

thistledown.org.uk 01453 860420 tinkley lane, nympsfield, GL103UH

# July 2019

What a couple of months we have had! It does not seem that long ago that the water companies were telling us that water restrictions were on the cards unless we all tried to use less water. Since then it does not appear to have stopped raining - except for the two days that saw major events in Avening. The first was in May when a good number of villagers enjoyed the Fun Day organised by the Parish Council and then early in June the church Fete was hailed as a great success, with the rain holding off until the tents, bouncy castles and umbrellas were just about to be packed away. There are some photographs of these events in the centre pages. Will the rain stay away for other events like Avening School Fete and Cherington Show?

In this issue we have a new column from Phoebe Carter who will talk about about wild life in Avening: thank you Phoebe!

Don't forget we are always looking for items of interest that can be included in your magazine just email them to the usual address [editors@acvillager.co.uk](mailto:editors@acvillager.co.uk)

To those of you who are going on holiday in the coming months, we hope that you have a fantastic time and if you do something unusual why not tell us about it or send us some photos so that we can share your joy with your friends and neighbours.

*The Villager Editors*

## The Villager Magazine

<b>Editors</b>	<a href="mailto:editors@acvillager.co.uk">editors@acvillager.co.uk</a> Jane Archer (07812 137161), Frances Conway (01453 832177) and Derrick Pierce (01453 835090).
<b>Advertising</b>	<a href="mailto:editors@acvillager.co.uk">editors@acvillager.co.uk</a> , Gwyneth Simpson 01453 836556
<b>Deliveries</b>	Cas Boddam-Whetham 01453 834834
<b>Deadline</b>	<b>18th of each month</b>

## Photographs in The Villager Magazine

Many thanks to **Tony Slater** for this photo at the Avening fete

If you have a photo of Avening or Cherington which you would like to share with us, please feel free to send it to us. You never know, it might turn up on the front cover...!

**[editors@acvillager.co.uk](mailto:editors@acvillager.co.uk)**



# Queen Matilda Country Inn



**Real Ale Real Food Real Fires**

Open Tuesday to Sunday

**Bed and Breakfast rooms now available**

**Sat 20th July: Live music with 'Blondes With Beards'**

**Quiz Night last Thursday every month**

Star Lane, Avening, Glos, GL8 8NT Telephone 01453 350305

Website: [queenmatildatavern.co.uk](http://queenmatildatavern.co.uk)



# My Village Handyman

ALL HANDYMAN WORK UNDERTAKEN  
ALSO PAINTING | ROOFING | FENCING | PATIOS | RESTORATIONS

Contact us to arrange a visit or quote

Call: 07904058866 Email: [sales@myvillagehandymanstroud.com](mailto:sales@myvillagehandymanstroud.com)

Web: [www.myvillagehandymanstroud.com](http://www.myvillagehandymanstroud.com)

# Regular Activities in Avening and Cherington

Please let us know if we have forgotten any regular event or if there is something you would like to have included here.

Event	Day	Time	Where	Contact
Line Dancing	Monday	7.30 - 9.30pm	Social Club	Social Club 01453 833760
Mobile Post Office	Monday and Thursday	12.00 to 1.00pm	opposite 65, Sunground	J. Clutterbuck 01453 542754
Community Cafe	Tuesday	9.00 - 11.30am	Social Club	
Churchyard tidy up	Tuesday	6.00 - 7.00pm	Holy Cross churchyard	Rev. Gerald 01453 834884
Cherington PC	Tuesday	6.00pm	Village Hall	Beverley 01453 832100
Bell Ringing	Tuesday	7.30 - 9.00pm	Church Bell Tower	Andrew 01453 835783
Line Dancing	Tuesday	8.00 - 10.00pm	Social Club	Social Club 01453 833760
Avening Youth Club	Every Tuesday in term time	6.00— 7.30pm	Memorial Hall	Rev. Gerald 01453 834884
Over 60s Lunch Club	1st Wednesday each month	12.30pm	Social Club	Christine 01453 833246
Avening Cinema Club	1st Wednesday each month	7.30pm	Memorial Hall	Katy 07806 614753
Avening W.I.	2nd Thursday each month	7.30pm	Memorial Hall	Maisie 01453 834679
Avening PC	3rd Thursday each month	7.30pm	Memorial Hall	Caroline 01285 380041
Summer Skittles	Friday	8.00pm	Social club	Derrick Ind 01453 835752
Charity Quiz	1st Saturday each month	8.00pm	The Bell	
Avening Angels Choir	Sunday	4.00pm	Various	Derrick Pierce 01453 835090

# Contacts for the Villages

Avening and Cherington Priest	Revd. Gerald South	01453 834884
Avening & Cherington Churches Reader	Derrick Pierce	01453 835090
Avening & Cherington Cricket Club	Derrick Ind	01453 835752
Avening Angels	Derrick Pierce	01453 835090
Avening Art Group	Doreen Pierce	01453 835090
Avening Bell Tower Captain	Andrew Lelliott	01453 835783
Avening Church Churchwardens	Elizabeth Buchanan Elizabeth Fuller	01453 833016 01453 835067
Avening Church Flower Team	Doreen Pierce	01453 835090
Avening Church Organist	Colin Chambers	01666 880026
Avening Church PCC Treasurer	Ann Brick	01453 834311
Avening Cinema Club	Katy Upton	07806 614753.
Avening History Project	Jean Chatelain	01453 834713
Avening Memorial Hall		07583 073604
Avening Oil Coordinator	Frances Lindley	01453 835115
Avening Parish Council Clerk	Shani Baker	01453 860379
Avening Playgroup	Angie Heslop	01453 832695
Avening Primary School	Jane Rushton	01453 833191
Avening Silver Band	Jim Hill	01453 834438
Avening Social Club	Derrick Ind	01453 835752
Avening Youth Club	Revd. Gerald South The Door	01453 834884 01453 756745

Cherington Village Hall	Wendy Eldridge	01285 841327
Cherington Parish Council Clerk	Beverley Rymer	01453 832100
Cherington Church Churchwardens	John Bate-Williams Helen di Mauro	01666 503544 07796 937268
Cherington Church Flower Team	Elizabeth Workman	01285 841294
Cherington Church Organist	Elizabeth Workman	01285 841294
Cherington Church PCC Secretary	Elizabeth Workman	01285 841294
Cherington Church PCC Treasurer	Paul Cable	cabes50@yahoo.co.uk
Community Café	Jennie South	01453 834884
Cotswold District Councillor	Richard Morgan	
Friends of Avening School	Nicky Dill	01453 833191
Over 60s Lunch Club	Christine Howell	01453 833246
South Cotswold Community Wellbeing Agent		01452 528491
Stroud Hospital	Reception	0300 421 8080
Tetbury Hospital		01666 502336
Women's Institute	Gwyneth Simpson	01453 836556

### **VILLAGE & AREA WEB SITES**

**Avening Parish Council: [www.avening-pc.gov](http://www.avening-pc.gov)**

**Avening Church: [www.aveningchurch.info](http://www.aveningchurch.info)**

**Cherington Parish Council: [cheringtonpc.org.uk](http://cheringtonpc.org.uk).**

**Cherington Village: [www.cheringtonvillage.co.uk](http://www.cheringtonvillage.co.uk)**

**Cotswold District Council: [www.cotswold.gov.uk](http://www.cotswold.gov.uk)**

# Letter From Avening Parish Council Leader



We had to have the June PC meeting a week early to ensure we complied with some financial arrangements, but most councillors were able to attend, and we had a lively and productive session. We had great news on crime – only one minor crime was reported between January and May, but let's keep vigilant, look out for our neighbours, and report anything that doesn't seem right. The 101 number is ideal for non-urgent issues, with 999 only for genuine emergencies.

To ensure the PC workload is spread more evenly, each councillor is starting to focus on areas that match their specific interests or skills. Owning mini-projects in this way makes it more interesting for individuals, gives better coverage across a broad spectrum of village life, and allows me to concentrate more on managing rather than doing.

The ongoing parking issues at Sunground have led to some tensions in the area, and we are working with Highways and Bromford Housing to see what can be done. A reminder to everyone that parking across drop kerbs is an offence and may get you a ticket. Please also remember that the drop kerbs are there to ease access for people with pushchairs, the disabled, and those who are generally infirm. The rules are the same where there are drop kerbs in place to access properties or pavements.

This month we reviewed a number of planning applications, with the development of Old Quarries being the most challenging – please see our observations in the Clerk's report for more details, but we have arranged a meeting with the developer and planners to discuss our concerns. In the meantime you can view the application on the CDC planning portal reference 19/01692/FUL.

The PC team got together to review what went well and access improvement opportunities from our May show. We agreed overall it was a great success, but we want to make sure the purpose of the event (to showcase village organisations, and the talents and products of local artisans), so next year we will refocus on this goal. We also thought September might be a better month to host it – in early summer we have a succession of brilliant events close together, but then it all goes a bit quiet until Christmas. A September show would help to bridge this gap, and open up new opportunities for crafts and produce. Let us know what you think.

We're looking at the Wi-Fi in the hall as it's a bit slow – the contract needs



updating, so we should be able to get better speeds for similar cost.

You may have noticed many local potholes have been marked up, but nothing has happened to them for quite a few weeks. Our County Councillor is investigating, and will get the fixes completed as soon as possible.

For quite a while we have looked at ways to welcome new residents to the village. We would ideally like to drop the information directly to them, but data protection has always thwarted us. However, I recently saw (on another village's website) a page with key information for new residents. I had no hesitation in copying the idea, and with input from the team we now have our own page for new residents – check it out on [www.avening-pc.gov.uk](http://www.avening-pc.gov.uk) and please point new neighbours towards it.

*Tony Slater*



## **YOUR Community ALERTS** Gloucestershire



**Sign up today for local news and alerts in  
your community.**



By registering today you will receive news and appeals, local crime information and crime prevention advice - directly to you.

**Registering with us is completely free.**



It will also help your local policing teams better police your neighbourhood.



[www.yourcommunityalerts.co.uk](http://www.yourcommunityalerts.co.uk)



## **S Woodman Garden Services**



**General Gardening**  
**Grass Cutting ~ Hedge Cutting**  
**Tree Cutting ~ Fruit Tree Pruning**  
**General Ground Clearance**  
**Good Rates / O.A.P Discount**

**Please Call: Home: 01453 834744 Mobile: 07814206803**

# Avening and Cherington Churches



## **An Oxford Professor, a Special Day and some Special Moments**

The day of the Avening Fete also coincided with a special day in the church calendar. Called 'Pentecost', it may be seen as the birthday of the church. We recall that motley collection of individuals, Jesus' disciples, who had been through so many ups and downs: after the departure of Jesus they must have been wondering what, if anything, was going to happen next. We are told that, gathered together in a state of uncertainty, they experienced something akin to a noise like a gusting wind and tongues of fire. Whatever this might have been, it transformed them: they saw themselves and the people and world around them in a very different way – this inspiration led them to build a community of people following the way of life described by Christ. This was the start of something that we now see in Christian communities across the world.

One person who became very interested in 'special moments', such as that above, was Alistair Hardy. After his retirement as Professor of Zoology at Oxford he set up a research team: they asked several thousand people the question *"Have you ever been aware of, or influenced by, a presence or power, whether you call it God or not, which is different from your everyday self?"*. They were amazed to find that over a half of respondents said that they had known such experiences.

The American, Thomas Merton, describes his experience of standing on the corner of a busy street in a large city: *"I loved all these people, they were mine and I theirs ... it was like waking from a dream of separateness ... to take your place as a member of the human race. I had the immense joy of being man, a member of the race in which God himself had become incarnate. If only everybody could realise this. There is no way of telling people that they are walking around shining like the sun."*

Christians often use the term 'Holy Spirit' in many ways including to describe the nature of these 'different' moments – a special insight and a gift from God. Some would say that, in principle at least, every moment is a special gift of the Holy Spirit who sustains us continuously.

Whether or not we use the language of Holy Spirit, there is every encouragement here to be sensitive to those thoughts and feelings that take us beyond ourselves, and into ourselves.

## **Avening Fete**

We would like to thank all those who gave so much of their time and inspiration at the many stalls and activities, and to all who supported the fete. It was a highly successful day showing the strong community spirit within the village.

The fete raised over £3,500 (final figure still to be confirmed at time of writing) towards the church finances, and additional funds for the village playgroup. What is the church money used for? Quite apart from maintaining a magnificent large ancient building, Avening church has many annual outgoings including insurance (~£2.4K), power and water (~£1.3K), churchyard maintenance (~£5.5K), expenses related to conducting services (~£1.8K). However these are only about half of the outgoings: we contribute ~£11.6K to the fund, run by the Diocese of Gloucester, which pays the incomes of clergy and their housing and training, together with many other expenses associated with such a large organisation.

Despite the generous giving of many and the proceeds of the fete, the current income is still falling short of the figures above. If you value the presence of the church within the village and don't already contribute to its upkeep, your financial support, however small, would be most welcome – please contact myself (details below) or the Treasurer, Ann Brick, on 01453 834311.

**Gerald South, Parish Priest for Avening and Cherington**  
**01453 834884 gp.south@btopenworld.com**

### Church Services and Events

<u>July</u>	<b>Holy Cross Avening</b>	<b>St Nicholas Cherington</b>
2 <sup>nd</sup>	12.30 am Praying the Parish	
7 <sup>th</sup>	11.00 am Eucharist	9.30 am Eucharist
10 <sup>th</sup>	7.00 pm PCC Meeting	
14 <sup>th</sup>	11.00am Eucharist with Baptism*	9.30 am Eucharist*
21 <sup>st</sup>	11.00 am Eucharist	No service today*
28 <sup>th</sup>	11.00 am Eucharist	9.30 am Morning Prayer
Aug 4	11.00 am Eucharist	9.30 am Eucharist
11 <sup>th</sup>	8.00 am Eucharist 5.30 pm Evening Prayer	

\* please note some changes to the usual monthly pattern of services.

# Avening W.I.

June proved to be a very busy month for Avening WI.

Our President, Gwyneth, attended the National Federation of WIs' AGM at Bournemouth where the latest WI resolutions were passed with a huge majority. These are campaigns entitled 'A call against the decline in local bus services' and 'Don't fear the smear', both important and relevant to our members and families.

We were lucky with the weather for our walk around Miserden, starting out across farmland and then through woods and round the lake before heading back up to the village. We had a well-earned rest and a tasty lunch at the Garden Café amongst the beautiful plants.

Our skittles team are through to the next round of the county competition and are due to meet Uley for a match at the Social Club.



Our cream teas and cakes were very popular at the Church Fete and we had a continuous stream of customers throughout the afternoon. We supported the 'Anti single-use plastic' campaign by switching to paper cups and containers and using washable mugs and cutlery.

We have just started a new activity for Avening WI, Walking Netball. Together with members from Kemble and Nailsworth WIs we will receive coaching to get us started and plan to meet twice a month for matches. If anyone from the village would like to join in with this activity, please e mail [aveningwi@gmail.com](mailto:aveningwi@gmail.com) for further details.

Unfortunately we were forced to cancel our proposed coach trip to Hillier Gardens but a group of members visited a more local garden under the NGS.

We have now booked a coach trip to Bristol docks with a guided tour of SS Great Britain and the new Brunel exhibition. Villagers and friends are welcome to join us for this trip which will take place on Wednesday 25<sup>th</sup> September. For more details or to book a place please contact Sue Osborn on 839327 as soon as possible.

Rachel Shackleton gave us plenty of food for thought with her talk ‘What’s in the hedgerow? – building immunity naturally.’ You may now be able to spot members foraging in the local hedgerows for various plants and berries which can improve our resistance to infections! Nettles, dandelions and goose grass added to soups, and elderberries and rosehips made into syrups are particularly beneficial.

At our meeting in July, the speaker will be Roger Turner with a talk entitled ‘William Kent and the Rococo Garden.’ As usual visitors are welcome to join us for the evening at the Memorial Hall. This will take place on Thursday 11<sup>th</sup> July at 7.30 pm.

*Helen Haiselden*

## **Exciting news! Terracycle and Colgate recycling at Avening Primary School**

**Did you know?** Each toothbrush you use and throw away takes over 400 years to degrade! There are eco-friendly alternatives available but if you don’t want to make the change then help Avening School and the planet by recycling your old toothbrushes and tooth cleaning products at school. Bring in any of the items seen below and pop them in the Terracycle box or leave them in the bag that will be left on the gate. When the box is full we send it for recycling and get much needed money for the school.



***Any brand of toothbrush/toothpaste can be recycled – not just Colgate***

***We are a registered public collection point***

***You can also drop items at 56 Sandford Leaze***

### **Other Recycling Tips**

- Save your empty crisp and biscuit packets and take them to Tesco Tetbury where you can now recycle them with old plastic bags. The container is just outside the main doors.
- Paper coffee cups/cups from kids parties/Tetrapak – All these can be collected and recycled at Tesco in the small car parking area on the left as you drive in.

# Puzzle Corner

			7		8	1	5	
1		7	2					6
				5		9		7
				8		5	6	3
	1	3	6		7	2	4	
8	4	6		2				
7		4		1				
9					6	8		2
	2	1	8		5			

Answers on page 38

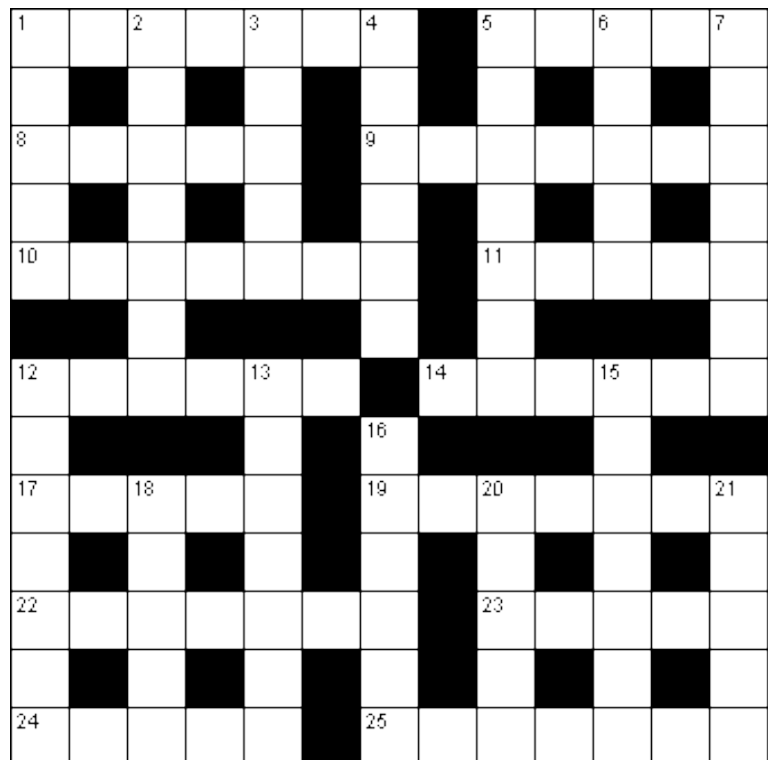
## Sudoku

Fill in the blank squares so that each row, each column and each 3-by-3 block contain all of the digits 1 - 9. If you use logic you can solve the puzzle without guesswork.

© 2013 KrazyDad.com

### Across

1. Quantify (7)
5. Mindful (5)
8. Changed location (5)
9. Pyrogenic (7)
10. Fundamental (7)
11. Languish (5)
12. Remit in advance (6)
14. Recommendation (6)
17. Utter (5)
19. Traversed (7)
22. Trap (7)
23. Precise (5)
24. Velocity (5)
25. Farm vehicle (7)



<http://www.puzzlechoice.com>

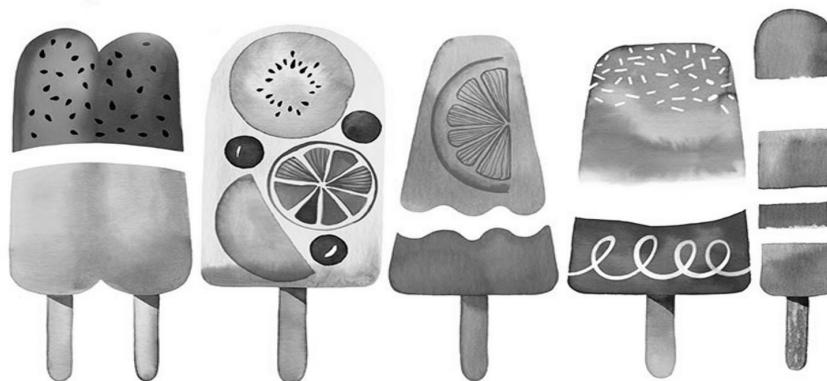
### Down

- |                   |                                   |                          |
|-------------------|-----------------------------------|--------------------------|
| 1. Imitate (5)    | 6. Fragrance (5)                  | 16. Dialect (6)          |
| 2. Go forward (7) | 7. Most vital part of an idea (7) | 18. Follow or result (5) |
| 3. Below (5)      | 12. Own (7)                       | 20. Greek letter (5)     |
| 4. Comestible (6) | 13. Clumsy (7)                    | 21. Dissuade (5)         |
| 5. Irritated (7)  | 15. Occurring with no delay (7)   |                          |



# AVENING SCHOOL SUMMER ★ FETE ★

Friday 5th July 3.15pm - 5.15pm



For more information please email [admin@avening.glous.sch.uk](mailto:admin@avening.glous.sch.uk)  
or [www.facebook.com/friendsofaveningschool](http://www.facebook.com/friendsofaveningschool)





# Avening Playgroup

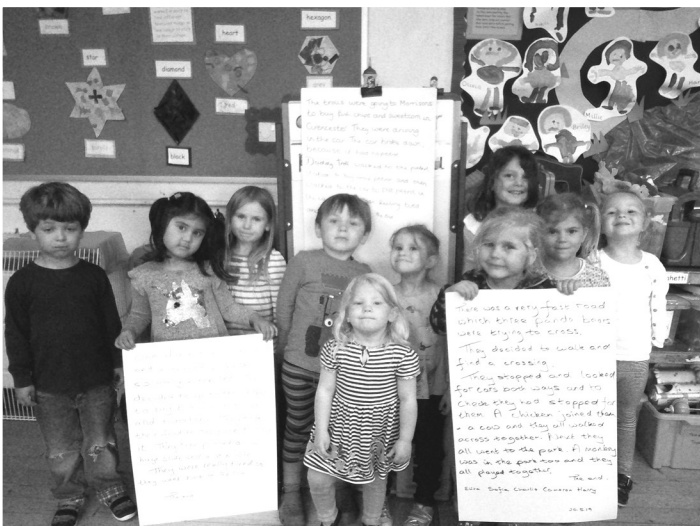
As I was writing the last article, the children had been preparing for 'Avening's Got Talent' and were working hard on making their frog head bands. The hard work paid off, as we thought they were absolutely brilliant on the day and we were all very proud of them! A big thank you, also to the parents and carers who made sure as many of the children were there as possible. It really was a lovely day and from what we saw on the bouncy castle and slide, a great time was had by all! Thank you to everyone who helped on the day and also at the fete.



The children have been involved in various activities over the past month, including:

- Making up their own stories
- Using language associated with size, length, height, weight and position
- Looking at numerals and practicing their counting

We have had stories about sharks and crocodiles going to the shops to buy beans and toast, then playing on a huge slide and zip wire. Another story involved trolls going to buy fish and chips but their car broke down on the way and Daddy troll had to walk a long way to get some petrol. One more example of the children's imagination was a story about panda bears trying to cross a busy road. They found a crossing and were joined by a chicken and cow. They all ended up going to the park to play with a monkey!



The children have been looking at height and measuring themselves against each other. They have been building towers out of bricks and duplo, and then compared them, saying which was tallest or shortest. They have also used the scales to weigh different items to find out which were heavier/lighter. We have played a game called 'Where's Elmer?' where Elmer the elephant is positioned on top, under, next to etc

and the children have to say exactly where he is.



This past week we have been looking at recognising and naming numerals. The children have rolled a dice then counted the spots in order to find the corresponding numeral. They have also been doing number puzzles and have practiced tracing over numbers. There has been lots of counting, too.



Next month the children will be getting ready for their move through days at Primary school. Many are really excited about this and we hope they have a lovely time.

If you would like any information about our lovely playgroup or you would like to put your child's name down on our waiting list, please call us on 01453 832695 or email [aveningplaygroup@gmail.com](mailto:aveningplaygroup@gmail.com). We are open weekday mornings during term time. Please note that we are planning for the Baby and Toddler Group to restart in September on Mondays between 1.00 and 3.00 pm.

*Angie Heslop*

## TETBURY GOODS SHED

A R T S C E N T R E

### July at the Goods Shed

**Have you been to see us yet at Tetbury Goods Shed?**

**The Shed is a live performance venue with weekly cinema shows and exhibitions, talks, workshops and children's events.**

**Among the varied July events are the film "Can You Ever Forgive Me?" (15), Wotton and District Silver Band and Clare Hammond's piano recital.**

**At the end of the month we are also hoping to run Circus Skills classes for children from 6-12. For tickets and further details on these and other events and to join our mailing list please see our website:**

*[www.shed-arts.co.uk](http://www.shed-arts.co.uk)*

**If you just fancy dropping in for a look round the Whistle Stop Cafe and railway carriage are open Wed-Sun 10am-4pm and the nearby trim trail and cycle path is also popular for those of an energetic nature!**



# Wild about Avening

Avening is a wonderful village and we are lucky enough to have incredible wildlife on our doorsteps. I fell in love with the natural world while growing up in Gloucestershire and this resulted in a 24 year (and counting) career in nature conservation working on everything from sea turtles in Cyprus to beaver re-introductions in the UK.

With the natural world now under so much pressure I am hoping to use this monthly feature to spread a little 'wildness' across Avening and encourage everyone to make a difference to the natural world, no matter how small. Each month I will feature animals or plants that live in our village, along with tips on how we can help them thrive; information on wildlife-friendly gardening; and,

ways that we can reduce our impact on the natural world.



This month I'm writing about the Swift, not least because I can see them whizzing across the sky as I type and hear them 'screaming' as they go – the true sound of summer. Swifts are amazing birds that are with us for just a few months every year. They have shared our buildings since the Romans came to Britain but now when arriving here they

find themselves excluded from nesting sites by house repairs and renovations, with new builds not designed to offer the eaves and gables they need to nest under. In only 20 years we have lost nearly half of all Swifts in the UK.

These amazing birds arrive in the UK from Africa every summer, an incredible journey for a bird that weighs only as much as a Cadbury's Crème Egg! They eat, sleep and mate in the air. They can let half their brains go to sleep while the other half takes care of the flying! In level flight they are the fastest birds with speeds of up to 69mph recorded (the Peregrine is faster when 'stooping' from great heights).

The young birds leave the nest after only 4 weeks and are totally independent from then on. Come mid-July all the swifts are ready to return to Africa for the winter; a journey they can make in just 4 weeks!

Our Avening swifts can be seen flying around the Mill and the Church where thankfully suitable sites for nesting still survive. It would be wonderful to see the number of these threatened birds increase in our village. We can help this happen by ensuring that none of their existing nesting sites are blocked up or

removed (it is illegal to remove or block a bird nest during the breeding season, which runs from March-August, inclusive).

You can also provide swift boxes on your house which act as artificial nesting sites. These nesting boxes should be put up around 4.5m high and have a clear flight path (no trees/shrubs in the way). While there is no guarantee they will use a box it has to be worth a try? Boxes can be made easily (see RSPB website) or purchased. If you're as crazy as me you can play swift calls below your nest box to 'lure' them in (now might be a good time to apologise to my neighbours!). If you can't provide new nest sites you can still help these wonderful birds by creating wildlife-friendly gardens that will supply some of the 300 different types of insect that the swifts feed on. I am happy to help anyone interested in doing something for swift conservation. Together we can make a difference.

*Phoebe Carter*

## **A Bite to Eat?**



### **Arranging a Group Lunch, Christening other social event ?**

Evening WI 'Bite to Eat' scheme may be able to assist with your catering needs. We can provide and serve a selection of freshly prepared sandwiches, scones, cakes etc; a fork or finger buffet; or a two course meal.

**For prices and any further details phone Liz Knowles 01453 833803 or [lizknowles@hotmail.co.uk](mailto:lizknowles@hotmail.co.uk)**

## **O.L.Cottle Family Business**

**Hand Carved Memorials : Cremation Plaques  
Additional Inscriptions : Renovations and Cleaning  
All Types of Stonework**

**Tel: 01453 762877  
36 Slad Road, Stroud, Gloucestershire**



# Avening School

## Flying the Nest.

Here we are again. Another academic year has gone in a flash and now we are in our final weeks of term. This is always a wonderful time of year, a mixed bag of emotions with some children leaving to start secondary school, other children moving up to a new year group and welcoming our new reception children who will join us during the move through days in July.

The children have been out and about a lot during this final term with The Hawks (y3/4) spending a day at The Cheltenham Science Festival where they took part in an oil-slick clean-up workshop, amongst other exciting activities. On a similar theme, the Owls (y5/6) paid a visit to 'We the Curious' (formerly

known as @Bristol) where they got to take part in hands-on experiments and activities which support their current term's topic 'We are the future'. It is not just the KS2 children that have taken their learning outside of the school; the Kestrels (y1/2) spent a fabulous day at Copsegrove Farm where they took part in a variety of outdoor activities from den-building to bug hunts.



Sport always plays a big part of school life at Avening, but this term in particular has been bursting with physical activity. We have a lot of cricket events, with tournaments at Frocester Cricket Ground for KS2 children as well as a day trip to Cheltenham to watch Gloucestershire play Leicestershire. There have also been rounders warm-up matches and then a tournament, and children who qualified from last month's district sports meet have taken part in the area sports tournament where children from local schools compete in a variety of events from speed bounce to running races.

Y6 have plenty still to do before they put on their leavers' hoodies and say goodbye to Avening School. After completing their cycling proficiency test in the middle of June, dispersing to their respective schools for their inductions days and preparing for their leavers' assembly at the end of term, the y6 children will put on a tea party for parents, staff and volunteers, attend their leavers' disco with their y5 fellow Owls and enjoy their treat day at Cattle

Country.

Last month, FOAS held their annual bear hunt which was a roaring success! A huge thank you must go to Clare, Jennie and Christine from the village who helped run the tea, coffee and cakes stall throughout the event which was a huge help to the committee. We have just one more fundraiser before we break up for the summer holidays. Our School Summer Fete will take place on Friday 5<sup>th</sup> July 3.15 – 5.15pm in the school grounds, garden and village hall. There will be a wide variety of activities for children of all ages as well as firm favourites such as the second-hand book stall, teas, coffee and cakes, and a barbeque. FOAS is eagerly seeking exciting items for their tombola stall. If anyone from the village community wishes to donate an item to the stall or would like to bake a cake for the fete, please contact the school office. Your help is greatly appreciated.

FOAS have had another great year of fundraising for the school. Without FOAS, there wouldn't be the same level of opportunities on offer for our pupils. Funds raised from their yearly calendar of events go towards enabling children to go on school trips, outings to the theatre, sports fixtures. FOAS money also pays for learning resources, books for the library and essential classroom equipment. Thank you to everyone who supports our FOAS events, we couldn't do it without you!

That just leaves us to say thank you for reading our articles all year, supporting our school and we look forward to carrying on reporting in the new academic year! Have a great summer!

*For further information about this busy place of learning please see our school website: [www.avening.gloucs.sch.uk](http://www.avening.gloucs.sch.uk)*

**Alex Adcock**

## CHILDREN'S SOCIETY



A big Thank you and 'well done!' to all the box holders of Avening! We have collectively raised **£203.72** for The Children's Society.

By supporting the Children's Society through box donations we are helping to improve the lives of children who feel scared, unloved and like they simply don't matter.

If you do not already have a collection box and would like one or would like to find out more, please get in touch with Liz Fuller 01453 835 067.

# Avening Church Fete

A huge thank you to everyone who helped in any way to make this year's fete such an enjoyable village event. This included stall holders, helpers, our rigging



team, ducks and dogs, our MC Jon, photographers, elegant sausage chefs and the ice cream team, and to those who kindly sponsored either raffle prizes or gave financial donations. We really appreciate the kindness, the time and energy given by all either on the day, or in the build up beforehand.

A special thank you to Angie Heslop and her Playgroup team who covered the children's area, the WI for their lovely teas, and the support of the school and social club.

Lastly to all in the village and surrounding area, who donated and supported during the day, thank you.

***Stephanie Hamilton-PCC secretary and Chair of the Fete Committee.***



## OSTEOPATHY & WELLBEING

### Symptoms suitable for Osteopathic treatment:

Spinal pain (back & neck), Sciatica, Limb pain (arms & legs), Frozen shoulder, Sporting injuries, Headaches & Migraines, Stress related conditions, Antenatal care for pregnancy related problems, Neonatal care for unsettled babies.

#### Also available at The White Practice:

- . Medical herbalism & allergy therapy
- . Cognitive behavioural therapy (CBT)
- . Acupuncture
- . Relationship, bereavement & sex therapy counselling

#### ONLINE BOOKING AVAILABLE

[www.thewhitepractice.co.uk](http://www.thewhitepractice.co.uk)

14 Market Street, Nailsworth, Glos, GL6 0BX

**01453 832515**

# PETER SAVAGE

**ALL FENCING & GATES SUPPLIED & FITTED  
GROUNDWORKS AND LANDSCAPING UNDERTAKEN  
SEASONED FIREWOOD – LOGS & KINDLING**

**Tel: 01453 833239  
or 07785 788335**

## **Traditional Acupuncture**

### **Holistic Massage**

With Paloma Sparrow  
At the White Practice,  
Market Street,  
Nailsworth

& St Luke's Therapy  
Centre, Cainscross  
Road, Stroud

## **Dove Therapies**



**Supporting health  
through life**

Free 20 minute  
consultation - in  
person or by phone

For more  
information or to  
book an  
appointment

07528 374 002

hello@dovetherapies.co.uk  
Www.dovetherapies.co.uk

## **Do you have a mole problem?**

With over 30 years experience in traditional mole control I can effectively, discreetly and humanely remove the culprit(s)! No gas, chemicals or poisons used and completely safe to children and pets.

**No Mole – No Fee!**

**07766 132934 (Days) 01666 890344 (Evenings)  
www.gbstateservices.com**

Member of the British Traditional Molecatchers Register. Member of the Guild of British Molecatchers  
BPCA/RSPH level 2 certificate in pest control. Fully insured and references available

**Call now for a free, no obligation site survey and quote.**

# Avening Parish Council Fun Day

Many thanks to  
Slater and Ch...  
for these





# Avening Church Fete

Thanks to Tony  
Charles Rymer  
for the photos



# Down Memory Lane

*The Editors recently received a the following from Paul Godwin, both of whose parents were born in Avening. Thank you very much for sending this on, Paul,.*

*Does anyone else remember the people mentioned here?*

My mother, Mavis is 92 years old and lived at 9 Tetbury Hill and my father lived in the High Street. Her father George May was a builder.

My father Donald Godwin was a teacher and I have very fond memories of spending summer and Christmas holidays in Avening in my childhood years.

I can remember being sent to the dairy in Star Lane and Marshall May the baker in the high street by my gran, she owned a grocery shop in the High Street.

My mother's Aunt Florie lived at No 10 Tetbury Hill. I can remember her, though I was very young and she very old. Apparently she played the organ at Avening Church [*in the 1911 census her profession is given as 'organist*] and taught at Avening School, which my Mother also attended.

She wrote this poem, probably in the early 1900s, As you can tell from the poem, she was very much in love with Avening.

***Paul Godwin***

## **A Tribute to Avening**

Avening - my native village, full of hope and song,  
Beauty and innocence to thee belong,  
And sweet simplicity.

Oh peaceful spot! Would I had never known  
Of aught but thy fair meadows; Nor out-grown  
Thy pure rusticity.

For youth and love there is no place like thee.  
Thy air inspires thoughts full of purity  
And joy that's all sublime.

For age, thy peaceful atmosphere is blest  
With all those qualities akin to rest  
And quietness divine.

Loved Avening! hast thou not given birth  
To some I hold most dear upon this earth?  
- To thee a debt I owe.

Days of my childhood all with thee were spent,  
Free, careless, happy days of glad content,  
Which only youth can know.

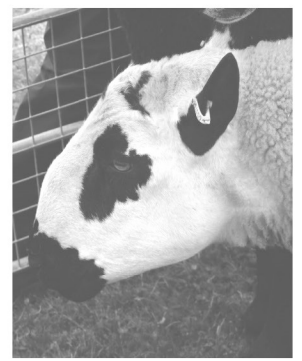
No matter in what land my footsteps tread,  
My thoughts will always back to thee be led,  
Dear native place of mine.

Changes may come, fortune may smile or frown,  
But in my mem'ry thou wilt stand enthron'd  
Until the end of time.

*F. May*

See our new website  
for competition and  
day schedules:  
[cheringtonshow.com](http://cheringtonshow.com)

Follow us on Facebook:  
Cheringtonshow



## The Cherington Show Sunday 21st July 2019

Save the date for our village show  
from 1.30pm!

Crafts, horticulture, rare breeds, Rudi the TV Otter, BBQ, Pimms, Kid's Zone, fab raffle prizes, tea tent, morris dancers, cakes, plant stall, vintage tractors, designer clothes, art show, Cherington produce stall, jams, books, and MUCH more! **GL8 8SN. 75 years young!**

**[cheringtonshow@gmail.com](mailto:cheringtonshow@gmail.com)** The village will be closed  
to through traffic. £2 per car entry



## COACHING

Are you facing challenges? Are you stuck, repeating the same old behaviour patterns? Would you like to see huge changes in your life either at work or at home?

Be the best version of you – gain clarity, take action and see positive results.

**Contact: Emma Clout MSc - Coaching  
Psychologist**

emsclout@gmail.com / 07555 677955



## Fred Stevens Funeral Directors

We give immediate attention – 24 hours  
Traditional and contemporary styled  
funerals arranged

Individual, flexible approach

Well established, family-owned company with highly  
experienced staff

Newmarket Road, Nailsworth, Gloucestershire GL6 0DQ  
telephone 01453 832188  
email@fredstevens.co.uk www.fredstevens.co.uk



## STEVE FLOYD PEST CONTROL ERADICATION & PREVENTION

E: [stevefloydpestcontrol@gmail.com](mailto:stevefloydpestcontrol@gmail.com)

[www.stevefloydpestcontrol.co.uk](http://www.stevefloydpestcontrol.co.uk)

Fully Qualified (25 years experience)  
Fully Insured

T: 01285 643750

M 07933 357373



# Letters to the Editor

To: *Martyn Hanley, Avening Court*

Thank you for your letter in last month's Villager about the 'goings on' in Brook Field.

We appreciate the explanation, as indeed villagers were concerned about the activity, mainly because of potential damage to our lovely stream, which flows down through the village and is full of wildlife and is such an asset to our scenic views.

We look forward to the wild flowers, after many years of neglect, and many thanks for making the road junction so much safer.

***Shirley Hand***



And on the same topic: after the information about the Brook Field update, Sandra Best thought people would be interested to see this photo of her friend Chris (who later married an Avening man) by the field in 1969 to see how it was at one time! She remembers how in her childhood the brook came into its own for paddling, catching sticklebacks, bully heads, reddiees, and anything else!



**Manufacturers of purpose made  
joinery of all types**

**Tel: 01453 885075**

**Email [gkjoinery@googlemail.com](mailto:gkjoinery@googlemail.com) [www.gkjoinery.com](http://www.gkjoinery.com)**

## Cirencester Foodbank

Cirencester Foodbank operates across the South Cotswolds and supports individuals and families.

In the 12 months to the end of March 2018, the Foodbank supported 3,851 clients, an increase of 30% year-on-year. To access Foodbank support, you need to be given a voucher. Vouchers are available from organisations such as Citizens Advice, P3, GP surgeries, churches, schools, mental health teams, Cirencester Signpost, Social Services, District Councils, Town Councils etc. Vouchers can then be redeemed at any of our Foodbank sessions. The Foodbank operates in Cirencester on Monday afternoons and Thursday mornings from the Ashcroft Church, in Tetbury on Tuesday mornings from the St Mary's Community Centre and in Fairford on Wednesday afternoons from the Fairford Community Centre. Our team will offer our clients a tea or coffee and pack the food for them. A food parcel contains food for a three-day period. We are also able to offer toiletries, household cleaning items, toilet rolls, baby food and nappies as well as pet food. Our teams will signpost onto additional help where appropriate and we are joined by P3 and Citizens Advice advisors in many of our sessions. Our aim is to not be needed; however, the Foodbank will continue to provide support until we reach that point.

The Foodbank is incredibly grateful to everyone offering food donations, funds and time. In the last 12 months just over 31 tonnes of food were donated (that's the weight of a petrol tanker!). Food donation points are available in Tesco Extra and Waitrose in Cirencester and Tesco in Tetbury. Please always check our website for items we are most in need of.

Thank you for all your ongoing support. For more information please visit [www.cirencester.foodbank.org.uk](http://www.cirencester.foodbank.org.uk) or call 07506 174373.

### **TONY'S CHARITY QUIZ NIGHTS**



**THE BELL, AVENING**

**1ST SATURDAY OF THE MONTH**

**£1 A PLAYER**

**A MAXIMUM OF 4 PLAYERS PER TEAM**

**ALL PROCEEDS TO THE COBALT APPEAL, CHELTENHAM**

dental  
practice

townes  
townes  
associates

*Family Dentistry You Can Rely On*



[www.familysmile.co.uk](http://www.familysmile.co.uk)

Satisfaction rating:  
more than 99%

100% of patients  
asked would  
recommend  
us to family  
& friends

Quote 'Villager' for a 50% discount on a full New Patient Examination  
with x-rays for just £39.50. Telephone us on **01453 827474**

# PETER JOY

Sales & Lettings

## Sales

01453 833747 [nailsworth@peterjoy.co.uk](mailto:nailsworth@peterjoy.co.uk)

## Lettings and Management

01453 833847 [lettings@peterjoy.co.uk](mailto:lettings@peterjoy.co.uk)

PROUD SUPPORTERS OF AVENING PLAYGROUP



## NAILSWORTH

George Street

Tel: **01453 705560**

**NOW OPEN**

Including Saturday 2-4pm



## TETBURY

23 Church Street

Tel: **01666**

**503531**



[georgevetgroup.co.uk](http://georgevetgroup.co.uk)

## A sporty summer – Good clean fun – Searching for our signature bakes



*Hats off to Cas Boddam-Whetham at our Ascot Comes to Avening on June 18th*

As I type this, The Grand Vizier has romped home in the 5 o'clock from Royal Ascot to give Gill Thomas her win after our 'Ascot Comes to Avening' Café sweepstake in June. My horse didn't even start....

Putting that minor disappointment aside, June was a great month! We hosted everything from beehives to bicycles (electric ones of course, courtesy of Edemo Bikes in Nailsworth) at our first Green Café on June 4th. We also

promoted recycling and tried to reduce waste-to-landfill to zero (we almost made it – just eight coffee sachets short of the target!). Phoebe Carter was named the Café's 2019 Environmental Hero in recognition of the work she does at Avening School inspiring the next generation of eco-warriors and Chandy Rodgers led the Great Green Giveaway for the village's gardeners to share seedlings and summer bedding plants. Pete Barton and six other dedicated litter pickers collected over six bags of rubbish from Avening's roadsides and the playing fields – and were rewarded by free cake and coffee on their return.

We've now adopted many of our Green Café actions as standard practice. We collect batteries, crisp and snack packets, toothbrushes, toothpaste tubes and packaging to support the School's recycling efforts, and biros for another school's initiative. We buy milk from our local organic supplier, Woeful Dane Dairy, and we endeavour to minimise single-use plastic and maximise our own recycling. Best of all, we'll hold an Even Greener Cafe in October.

In other news, we owe a huge vote of thanks to Atlanta Rayner who ran her first Writing for Fun session at the end of May. 'It was a superb and quite unexpected way to spend a Tuesday morning,' said one participant, 'a truly intimate experience.' Atlanta has offered to repeat the session in the early



Autumn; it's set to be a sell-out.

It's a sporty theme for July with Cafés inspired by Wimbledon and The Festival of Eventing at Gatcombe Park. Former Avening-er Lil Adams will offer some good, clean fun with a session on making mini-sculptures out of soap. We're encouraging first-time volunteers to have a go from behind the counter at our Rookie Tuesday Café on July 23<sup>rd</sup> – there will be bacon



*Litter pickers, led by Pete Barton, third left, set off from the Green Cafe on June 4th*

sandwiches for Early Birds on that day too. We're also particularly excited about two big new initiatives which you'll hear more about during the course of the month. Maura Barton is helping us to collect our favourite cake recipes for The Little Café Baking Book, which we will publish in November. And we're delighted to announce our collaboration with the Avening Cinema Club, with The Greatest Showman becoming our film choice for our first Movie Matinee and Popcorn Club on August 15<sup>th</sup>. Roll on summer! With some sun, hopefully....

**Clare Bebbington**

***Follow us on Facebook (Avening Community Café) to keep up with everything going on at the Café – and don't forget we serve great coffee and home-baked cakes too!***



## **FOREVER YOUNG**

## **OVER 60s LUNCH**

1<sup>ST</sup> Wednesday of each month 12.30 start

### **Avening Social Club**

Phone Chris Howell on 01453 833246 to book your lunch

Main course, sweet and tea/coffee all for £6.00

A big thankyou to all who have supported us in the past



# Avening Youth Club



## Summer at The Door:

### 2<sup>nd</sup> July- invent an ice-lolly

Make your own flavour of ice lolly and create a mould of recycled materials.

### 9<sup>th</sup> July- picnic in the park

Depending on the weather we will be going to the park to celebrate by playing games and having a picnic.

### 16<sup>th</sup> July- end of year party!

A chance to celebrate all you have achieved over the past academic year by having a party, playing games and eating food.

**SEE YOU IN SEPTEMBER. Enjoy the Summer Holidays!**

### *Check out the Facebook Page*

Youth Club is for anyone aged 8 to 14, from Avening, Nags Head, or Cherington. We meet every Tuesday in term time from 6 to 7.30 pm at the Memorial Hall. Once you're 13 we'll ask you to be a Young Leader and help out (don't worry, we'll give you training). Cost is just £1 a time to include a healthy snack. Just come along and see what's what if you haven't been before.

**For parents or carers:** The Youth Club is run by The Door (find their website at [www.thedoor.org.uk](http://www.thedoor.org.uk)). They provide qualified and experienced Youth Workers. You just need to leave an emergency contact number when you drop your young person off. If they come on their own, we need them to give us a number to contact.

**Want more information?** Contact Rev Gerald South on 834884 or John at The Door on 01453 756745.

## Church Floodlighting



The church was floodlit in loving memory of **Barry Robins** on his birthday, **23rd June**, from all the family.

The church looks beautiful at night when floodlit. If you would like to have this in memory of a loved one, or to celebrate a special event, contact: **Paul Brown 01453 835 983.**

The cost is £10 for 2 hours



TOAD HALL  
TRULL FARM  
TETBURY  
GL8 8SQ



Your own private room for lunches, dinners, drinks, receptions, childrens parties, business meetings, exhibitions, film nights. Large screen and internet.

Kitchen plus smaller room available. Outside or "inhouse" catering. A marquee could be added if required.

For Bookings and prices please contact :  
Fi Mitchell  
fimitchell06@btinternet.com  
01285 841229 07885 094393

# *Nailsworth Domestic Appliance Repairs*

*A reliable, fast & friendly service*

*Washing Machines,*

*Dishwashers,*

*Tumble Dryers,*

*Fridge-Freezers,*

*Electric Cookers . . .*

*No Call - out Charge*

*01453 ~ 833310*



# Avening Cinema Club

WEDNESDAY 3<sup>RD</sup> JULY 7.30pm

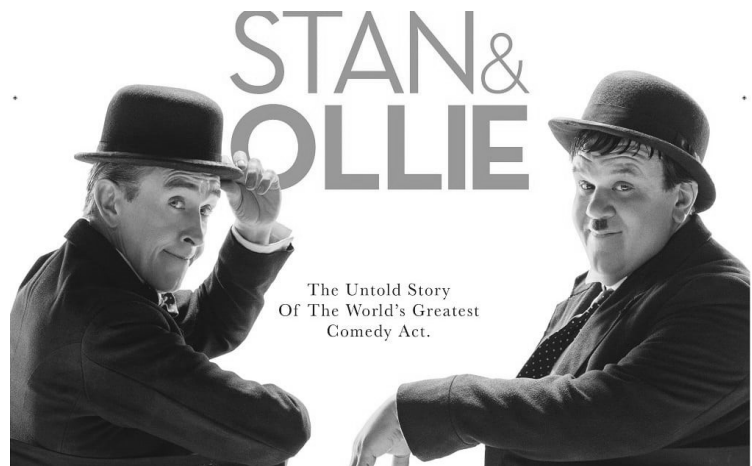
AVENING MEMORIAL HALL

Admission £5

Starring: Steve Coogan, John C. Reilly, Shirley Henderson, Danny Huston, Nina Arianda, Rufus Jones

Director: Jon S. Baird

STAN AND OLLIE is a biographical drama in which comedians Stan Laurel and Oliver Hardy embark on a tour of Britain. The heart-warming story of what would become the pair's triumphant farewell tour.



**This will be our last film until September, as we take a break in August.**

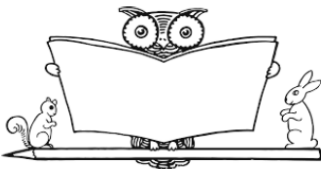
Please note that from September the film club will run on the first **Thursday** of every month, at 7.30pm in the Memorial Hall.

Please do check our Facebook page or contact Katy Upton for more information, and for the chance to vote on films.

Phone: 07806 614753. Email: [katywingrove@hotmail.co.uk](mailto:katywingrove@hotmail.co.uk)

The film club is a not for profit community event. Any profit made after screening/licence costs will be donated to local charities.

## Avening Church of England Education Fund (ACEEF)



The trustees of ACEEF have limited funds available to assist Avening residents under 25 with their education.

These grants are intended to help ensure that young people in the village are not deprived of the opportunity to receive good education suiting their aptitudes and abilities.

If you, or your children, are in need of such support, please request an application form by phoning 01453 834884 or emailing [gp.south@btopenworld.com](mailto:gp.south@btopenworld.com) or from 5 Orchard Field GL8 8PE.

The form should be completed and returned by 7<sup>th</sup> July.

# COMING SOON!

# AVENINGCINEMA CLUB



AND THE



PRESENT A

## MOVIE MATINEE AND POPCORN PICNIC!



**AUGUST 15TH, MEMORIAL HALL, DOORS OPEN 1.45PM**

TICKETS £2.50 in advance from the Avening Community Café. £3 on the door. Children under 5 free.

FILM IS CLASSIFIED PG

# Puzzle Corner Answers

3	9	2	7	6	8	1	5	4
1	5	7	2	4	9	3	8	6
4	6	8	3	5	1	9	2	7
2	7	9	1	8	4	5	6	3
5	1	3	6	9	7	2	4	8
8	4	6	5	2	3	7	9	1
7	8	4	9	1	2	6	3	5
9	3	5	4	7	6	8	1	2
6	2	1	8	3	5	4	7	9

M	E	A	S	U	R	E		A	W	A	R	E
I		D		N		D		N		R		S
M	O	V	E	D		I	G	N	E	O	U	S
I		A		E		B		O		M		E
C	E	N	T	R	A	L		Y	E	A	R	N
		C					E	E				C
P	R	E	P	A	Y			A	D	V	I	C
O				W			A				N	
S	P	E	A	K			C	R	O	S	S	E
S		N		W			C		M		T	E
E	N	S	N	A	R	E		E	X	A	C	T
S		U		R			N		G		N	E
S	P	E	E	D			T	R	A	C	T	O

## Carpet and Upholstery Cleaning Specialists

### Barden Clean

**CALL NOW**

**Michael Denley**

**01453 752893  
07541 002 891**

**[www.bardenclean.co.uk](http://www.bardenclean.co.uk)**

- Ultra fast drying times
- Environmentally friendly
- Removes stains
- High temp – sterilises carpet
- Improves air quality
- Removes dust mites
- Fully insured



**TETBURY MUSIC FESTIVAL**  
THE FINEST MUSIC IN THE COTSWOLDS

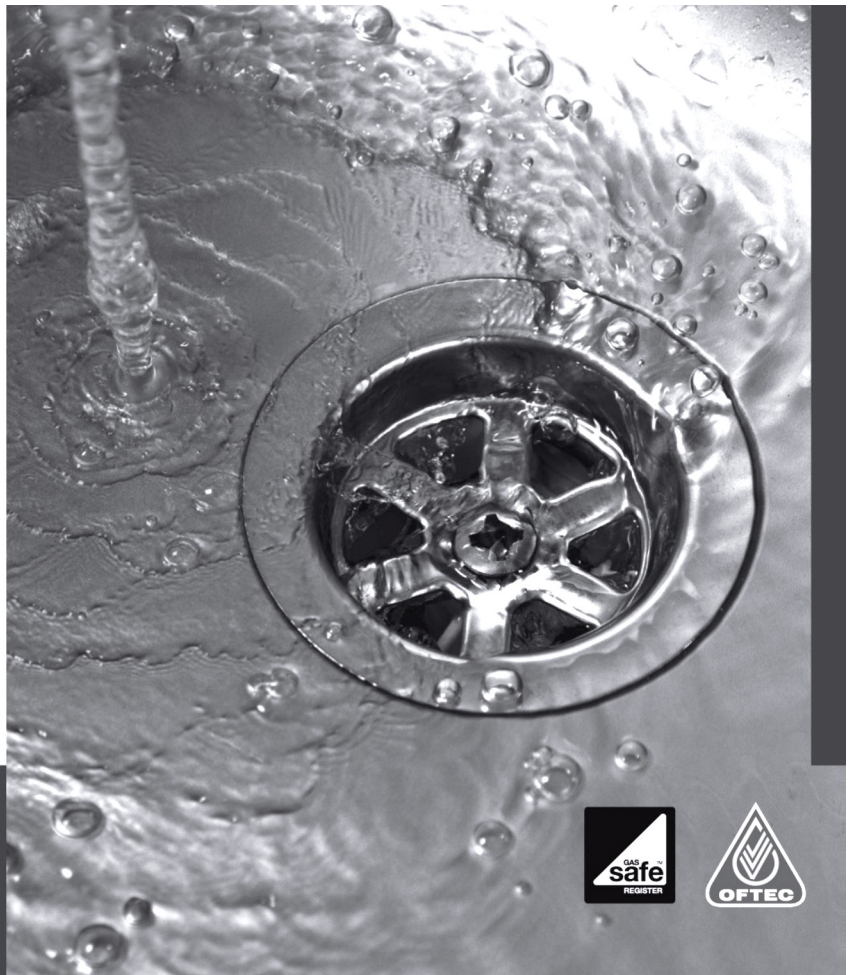
Tickets are on sale for the 2019 Tetbury Music Festival, which this year includes performances from the **Paravicini Quartet**, the **Aronowitz Piano Trio**, **VOCES8**, **Dame Felicity Lott**, Russian pianist **Pavel Kolesnikov** and the choir and orchestra of **Arcangelo** with three international guest soloists.

Tickets can be bought on line at [www.tetburymusicfestival.org](http://www.tetburymusicfestival.org) where you can also see further detail of the concert programmes, by phoning the Box Office: 0333 666 3366, or in person at Tetbury Visitor Information Centre.



**Plumbing  
& Heating**  
(Cotswold) Ltd

- Oftec and Gas safe registered
- Boiler replacements
- New build and renovations
- Heating updates and alterations
- Underfloor heating
- Bathrooms
- Water softeners
- Over 35 yrs experience
- Tetbury based



Clive Alley t: 07584414624  
Scott Wilkins t: 07717750247  
e: scott@awplumb.co.uk  
www.awplumb.co.uk



## Dying without a Will. Now that's a real tragedy.

No-one likes the thought of dying, so it's hardly surprising that almost 3 out of 5 UK adults don't have a valid Will (*source: www.unbiased.co.uk 2010*). Yet having one is one of the most important arrangements you can make during your lifetime.

My name is David Martin. I live in Nailsworth and I'm the local consultant for *Steele Rose & Co* - one of the UK's Premier Professional Home Visit Will Writers. After 22 years serving my country in the RAF, I have spent the last 28 years of my life professionally advising my clients on all personal financial matters and specialising in Wills.

Writing a Will is easier and cheaper than you think. It also ensures that your wishes are carried out simply and efficiently - causing the minimum of anguish for those you leave behind. If you would like to discuss your Will arrangements, redraft an existing Will, Lasting Powers of Attorney, or other associated legal services, at a mutually convenient time in the comfort and privacy of your own home, please contact me:



*David Martin*

**David Martin, local consultant,  
Steele Rose & Co**  
(Nailsworth & surrounding areas)  
01453 836699 (M) 07973 405997

Email: [dcmartin@hotmail.co.uk](mailto:dcmartin@hotmail.co.uk)  
[www.steelerose.co.uk](http://www.steelerose.co.uk)

Members of the Society of Will Writers



# Locally-Based Charities

This table gives information about charities which are based in and around Avening and Cherington. Periodically, we will give a more detailed outline of what each organisation does.

Please let us know if any information is incorrect and also if you know of any other charities which should be included - we know there are plenty for this list.

<b>Charity</b>	<b>Purpose</b>	<b>Further Information</b>
Avening Church of England Educational Fund	To support and promote the education of those under the age of 25 resident in the parish of Avening.	Revd. Gerald South gp.south@btopenworld.com
Avening Playgroup	To provide funded early education for two-, three- and four-year -old children.	01453 832695 Angie Heslop; avening-playgroup@gmail.com.
Friends of Avening School (FOAS )	FOAS raises money to help with various projects and activities at the school.	01453 833191
Friends of Little Stars	Fundraising and support for Little Stars School for underprivileged children in Varanasi, India	Kieran Archer 01453 832992 littlestarsschool.org
Hop, Skip & Jump Foundation	Provide high quality respite care for children and young adults with disabilities and SEN	hoskipandjump.org.uk 01453 836390 marcoms@hoskipandjump.org.uk
Horsfall House	Provides nursing care for residents, a Day Centre 6 days a week Home Care and meals on Wheels in the local area.	01453 731227
Longfields	Supporting any adult affected by life-limiting illness to live well; to die well; and to care well.	01453 886868 day.services@longfield.org.uk
Mark Townsend Charitable Trust	Providing help with whatever life circumstances may incur.	www.themarktownsenedcharitabletrust.com 01453 832799



## Hector, Venus and Harry

My name is Harry and my friend Venus and I are replying to our cousin Hector's article in last month's Villager.

I'm known as Prince Harold because, being a Cavalier King Charles, I am of royal lineage.

My name is Venus - I'm not of royal lineage because I'm just a common labrador but, to certain people, I'm known as the Goddess - something to do with the Greeks, I think.

I'm not sure whether our mistress will enter either of us in the Cherington Dog Show. Last time she did, neither of us won anything so we'll probably spend the afternoon under the raffle table while she does whatever it is with raffle tickets. Really for us it's very boring, so if anyone sees two bored dogs, please come and talk to us.



Our cousin Hector comes to stay with us quite a lot - Harry gets on his royal high horse sometimes and refuses to have much to do with him but because, when I was younger, I had two litters of puppies and had to put up with my tail being pulled and my face being smothered - not to mention being trampled on upside-down, I just put up with it and heave a sigh of relief when he gets taken home.

I think Venus is being a bit hard on me about Hector - I actually rather like him but he's very strong and powerful and, as I'm not very big, I get a bit scared sometimes in case he crashes into me or whacks me with his tail.

But we both wish him good luck in whatever class he enters in the Cherington Dog Show and - who knows - we might escape from under the raffle table and enter ourselves this year.

Watch this space!

***Ann Tarlton***

# Avening Parish Council



## Avening Parish Council Meeting 14 June 2019

The minutes of the meeting will be published shortly, but some of the items discussed are summarised below:

### **Crime**

1 crime was reported in the period from 1<sup>st</sup> January to 31<sup>st</sup> May – a non-violent argument. This compares with 4 crimes in the same period last year

### **Dropped Kerbs**

People are still parking across dropped kerbs, which is a traffic offence – warnings have been issued, but tickets may be issued if the problem persists.

### **Annual Village Show**

The show was a great success and we were very lucky with the weather. Next years planning is underway. September is the date in mind.

### **Playing Field**

The improvement work to the footpath connecting Sunground to the playing field was delayed due to weather conditions, but will start shortly.

### **Planning**

19/00902/FUL: Erection of single storey extension – 21 High Street. No objections

19/01449/FUL: Formation of Bay Window - 61 Sunground. No objections.

19/01692/FUL: Old Quarries – Change of Use from existing C2 residential to C3 residential. Including demolition of modern extensions, internal alterations and extensions, demolition of modern institutional buildings and replacement with new dwellings, associated garaging, rebuilding of boundary wall and landscaping The Old Quarries planning application is available to view online.

The Parish Council do not object to the development, but have significant concerns over traffic movements, especially access via the two entrances – Rectory Lane has no pavement, and is a major route for pedestrians down to the school. The track leading to the Nailsworth road exits onto a blind bend. It appears insufficient guest parking has been included in the scheme, which would risk them using Rectory Lane.

We are also worried about the impact of construction traffic, as the access track does not yet look strong enough, and Rectory Lane would be completely unsuitable.

A public meeting with the developer is being arranged.

Valley Trading on the industrial estate near Beverston have applied to increase their waste disposal tonnage by 30,000 which will significantly increase traffic through the area. A campaign is underway to object to the proposals.

### **New Residents**

There is now a new link from the Parish Council website home page for new residents and visitors to access useful information.

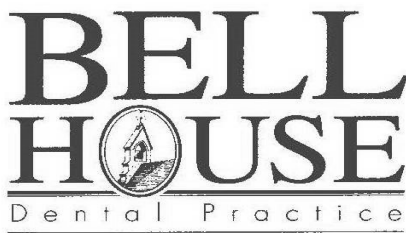
### **Next Meeting**

The next meeting is **MONDAY** 15 July 2019. The agenda will be posted on the notice board, and will be available to view at [www.avening-pc.gov.uk](http://www.avening-pc.gov.uk). The Parish Clerk can be contacted via email: [parishclerk@avening-pc.gov.uk](mailto:parishclerk@avening-pc.gov.uk)

## **Cherington Parish Council**

No entry for this month.

The Parish Clerk can be contacted on 01453 832100 or via email at [cheringtonparishcouncil@yahoo.co.uk](mailto:cheringtonparishcouncil@yahoo.co.uk).



- **Dentistry for all the Family**
- **Private and Denplan**
- **Cosmetic treatment**
- **Tooth whitening**
- **Hygienist**



Robert W. Carter B.D.S.  
7 New Church Street . Tetbury . Gloucestershire . GL8 8DS  
Telephone (01666) 503788

0100315

## NAILSWORTH ACCOUNTANCY

### ACCOUNTANCY SERVICES FOR SELF EMPLOYED AND LIMITED COMPANIES

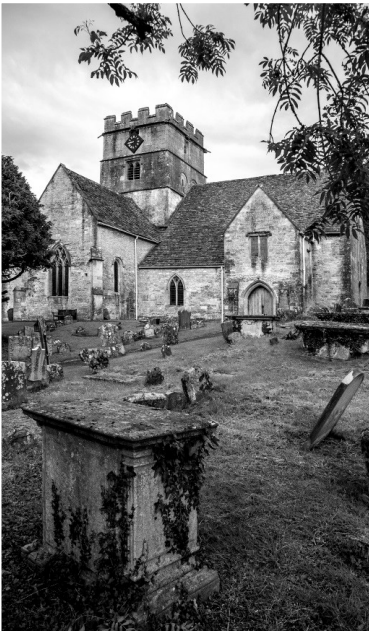
Self-Assessment Tax Returns  
Accounts Preparation For Small Businesses  
Company Accounts  
Business Start Ups & Company Formations  
VAT Returns and Tax Planning

For a competitive quote telephone Emma

01453 835050

TOWN HALL NAILSWORTH

### **Avening Churchyard**



This churchyard must have been used for burials for over 900 years, possibly a good deal longer. The new area, adjacent to the rear of the school and end of Orchard Field, has been in use since the early 1970s and is now nearly full.

We are very reluctant to close the churchyard for any future burials and are therefore investigating ways in which this will not be necessary. One possibility is to re-use areas which have not been used for well over 100 years, a procedure that is used in some other churchyards.

This requires special permission (called a Faculty) and we are currently proposing to make such an application for the area of the churchyard to the south of the church where there are no memorials and there seem to have been no burials since the 19<sup>th</sup> century.

None of this affects the interment of cremated remains: fortunately we have space for these for many years to come.

As with all church matters, views of villagers are welcomed.

***Gerald South***



## OPEN

Mon - Thur: 11am - 11pm  
 Fri - Sat: 11am - 11.30pm  
 Sunday: 12pm - 11pm

## LUNCH

Mon - Sat: 12pm - 2.30pm  
 Sunday: 12pm - 5pm

## WORKERS' POT

Mon - Fri: 5pm - 6.30pm

## DINNER

Mon - Sat: 6.30pm - 9.30pm

**DOG  
 FRIENDLY!**



## THE ROYAL OAK TETBURY

**Walkers, cyclists, explorers** - welcome to The Royal Oak in Tetbury, an 18th century inn with a classic saloon bar, courtyard, gardens and stylish lodgings. Upcycled furnishings, cosy booths, a deco piano and a dining room in the rafters offer dining as well as private dining for gatherings and celebrations.

**Cask Marque excellence** is awarded for the great selection of guest ales including Stroud brewery. The seasonal menus showcase organic meat from local farms, sustainably sourced fish specials and with monthly Meat Free Monday events and a standalone vegan menu the choice is excellent for all.

With **six lovely en suite rooms** including the sensational Oak Lodge, and three dog-friendly rooms, The Royal Oak is a fun and relaxed getaway from which to browse the chic boutiques of Tetbury or explore the beautiful Cotswolds.

**1 CIRENCESTER RD. TETBURY GL8 8EY  
 01666 500021 | THEROYALOAKTETBURY.CO.UK**

# Dates For Your Diary

Wednesday 3rd July	Avening Cinema Club 'Stan and Ollie'	Avening Memorial Hall	7.30pm
Friday 5th July	FOAS School Summer Fete		3.15- 5.15pm
Monday 15th July	Avening Parish Council Meeting	Avening Memorial Hall	7.30pm
Tuesday 16th July	Youth Club breaks up until September	Avening Memorial Hall	6.00- 7.30pm
Sunday 21st July	Cherington Show	Cherington	From 1.30pm
Tuesday 23rd July	End of Term	Avening Primary School	
Thursday 15th August	Movie Matinee: The Greatest showman	Avening Memorial Hall	1.45pm
Thursday 5th September	Avening Cinema Club	Avening Memorial Hall	7.30pm



*Avening Community Cafe*

## What's on in July

- July 2 **Anyone for Tennis?**  
*Strawberries steal the show as Wimbledon begins. Free if you've just finished GCSEs/A Levels!*
- July 9 **Ready, steady...soap!**  
*Good clean soap sculpture fun with Lil Adams.  
Book Swap too - with an outdoor hobby theme*
- July 16 **Coffee, cake and a good old chinwag**  
*Doing what we do best...nothing more,  
nothing less*
- July 23 **Rookie Tuesday & bacon sarnies for Early Birds**  
*Join other volunteer first-timers this morning*
- July 30 **A Taste of Gatcombe**  
*Carrot cake? Oat biscuits? Bran loaf (maybe not)? We offer a flavour  
of the Festival of Eventing*

# £20 OFF Your Next Service

Just hand this voucher to one of our friendly team members

**PLUS  
£5**  
donation to  
Avening School  
with your service  
when you hand in  
this voucher



- All Makes and models
- Dealer level diagnostics and servicing
- Free no obligation estimates
- local free pick-ups

for free, friendly, local advice give us a call

**01453 832871**

[info@service-tech.org.uk](mailto:info@service-tech.org.uk)  
[www.service-tech.org.uk](http://www.service-tech.org.uk)



Inchbrook Trading Estate, (A46) Bath Road, Nailsworth, Stroud, GL5 5EY

# The Bell at Avening

a traditional British pub serving a great selection of real ales and food



**OPENING TIMES:**  
MON - FRI: 5:30PM - CLOSE  
SAT & SUN: ALL DAY FROM 12 NOON

**LIVE MUSIC EVERY MONTH**

**FIRST SATURDAY OF EVERY MONTH IS  
QUIZ NIGHT**

*Little*  
**INDIA**  
at THE BELL

Little India @ The Bell, serving food from Tues-Sun 5pm-11pm  
Call **01453 836453** for great food to eat in or takeaway  
Visit our website for full menu

Call us on: **01453 836422** or e-mail us at **info@agpubs.co.uk**

[www.thebellavening.co.uk](http://www.thebellavening.co.uk)

Find us on Facebook  
by simply searching  
"Bell at Avening"



**TROUBLE HOUSE**  
CAFE | BAR | RESTAURANT

London Road  
Tetbury  
GL8 8SG

Come and visit us for Breakfast, Morning  
Coffee, Lunch, Afternoon Tea, Dinner, and  
Sunday Roasts

Plenty of parking and dogs welcome

## Opening Hours

Tuesday - Saturday 9am – 5pm

Friday & Saturday evenings dinner from 7pm

Sunday Lunch 12 – 3pm

(Closed on Mondays)

For more information please call

01666 502206 or visit [www.thetroublehouse.co.uk](http://www.thetroublehouse.co.uk)