

The Villager

A Magazine for Avening, Cherington
and Nags Head

June 2019

editors@acvillager.co.uk

Fieldfare Café at Thistledown Farm



We're now open Wednesday to Sunday!

Our café is set in 75 acres of beautiful meadow and woodland overlooking Woodchester Park. We serve lunch from our wood-fired clay oven & charcoal BBQ Weds to Sun and brunch Sat & Sun. Fine teas, coffees & delicious homemade cakes served 9am to 4:30pm daily. Come up for an autumn walk and enjoy a hot drink with stunning views beside our woodburner!

You can join our mailing list for info on events such as vegan tapas, storytelling and foraging days. We stock delicious sourdough bread, Organic milk, our own preserves and more. Meats are free range and we use local and Organic produce wherever possible. Dogs are welcome on leads and we have baby changing and disabled facilities.

thistledown.org.uk 01453 860420 tinkley lane, nympsfield, GL103UH

June 2019

As always, June promises to be another busy and happy month for our villages. We can look forward to the Fete, with its multitude of events, the Photographic Competition, Open Gardens, Bear Hunt and the School Fete, to name but a few.

We should also like to remind readers of the Cinema Club, which at the moment shows films every month on the first Wednesday. From September this will change to the first Thursday of each month. Please continue to support this venture, which offers us not only the opportunity to see a wide selection of films, but also is another chance for a regular get-together with friends and neighbours. We need to support it to make it financially viable - 'Use it or lose it' is a useful adage to bear in mind.

There has been some discussion about the extensive work being done on Brook Field at the moment. Readers may be interested to read more about the project in this edition of the Villager.

Have a happy month!

The Villager Editors

The Villager Magazine

Editors	editors@acvillager.co.uk Jane Archer (07812 137161), Frances Conway (01453 832177) and Derrick Pierce (01453 835090).
Advertising	editors@acvillager.co.uk, Gwyneth Simpson 01453 836556
Deliveries	Cas Boddam-Whetham 01453 834834
Deadline	18th of each month

Photographs in The Villager Magazine

Many thanks to **Frances Conway** for this lovely photo from her garden

If you have a photo of Avening or Cherington which you would like to share with us, please feel free to send it to us. You never know, it might turn up on the front cover...!

editors@acvillager.co.uk



My Village Handyman

ALL HANDYMAN WORK UNDERTAKEN
ALSO PAINTING | ROOFING | FENCING | PATIOS | RESTORATIONS

Contact us to arrange a visit or quote

Call: 07904058866 Email: sales@myvillagehandymanstroud.com

Web: www.myvillagehandymanstroud.com



Queen Matilda Country Inn



Real Ale Real Food Real Fires

Open Tuesday to Sunday

Bed and Breakfast rooms now available

Quiz Night last Thursday every month

Star Lane, Avening, Glos, GL8 8NT Telephone 01453 350305

Website: queenmatildatavern.co.uk

Regular Activities in Avening and Cherington

Please let us know if we have forgotten any regular event or if there is something you would like to have included here.

Event	Day	Time	Where	Contact
Line Dancing	Monday	7.30 - 9.30pm	Social Club	Social Club 01453 833760
Mobile Post Office	Monday and Thursday	12.00 to 1.00pm	opposite 65, Sunground	J. Clutterbuck 01453 542754
Community Cafe	Tuesday	9.00 - 11.30am	Social Club	
Churchyard tidy up	Tuesday fortnightly	6.00 - 7.00pm	Holy Cross churchyard	Rev. Gerald 01453 834884
Cherington PC	Tuesday	6.00pm	Village Hall	Beverley 01453 832100
Bell Ringing	Tuesday	7.30 - 9.00pm	Church Bell Tower	Andrew 01453 835783
Line Dancing	Tuesday	8.00 - 10.00pm	Social Club	Social Club 01453 833760
Avening Youth Club	Every Tuesday in term time	6.00—7.30pm	Memorial Hall	Rev. Gerald 01453 834884
Over 60s Lunch Club	1st Wednesday each month	12.30pm	Social Club	Christine 01453 833246
Avening Cinema Club	1st Wednesday each month	7.30pm	Memorial Hall	Katy 07806 614753
Avening W.I.	2nd Thursday each month	7.30pm	Memorial Hall	Maisie 01453 834679
Avening PC	3rd Thursday each month	7.30pm	Memorial Hall	Caroline 01285 380041
Summer Skittles	Friday	8.00pm	Social club	Derrick Ind 01453 835752
Charity Quiz	1st Saturday each month	8.00pm	The Bell	
Avening Angels Choir	Sunday	4.00pm	Various	Derrick Pierce 01453 835090

Contacts for the Villages

Avening and Cherington Priest	Revd. Gerald South	01453 834884
Avening & Cherington Churches Reader	Derrick Pierce	01453 835090
Avening & Cherington Cricket Club	Derrick Ind	01453 835752
Avening Angels	Derrick Pierce	01453 835090
Avening Art Group	Doreen Pierce	01453 835090
Avening Bell Tower Captain	Andrew Lelliott	01453 835783
Avening Church Churchwardens	Elizabeth Buchanan Elizabeth Fuller	01453 833016
Avening Church Flower Team	Doreen Pierce	01453 835090
Avening Church Organist	Colin Chambers	01666 880026
Avening Church PCC Treasurer	Ann Brick	01453 834311
Avening Cinema Club	Katy Upton	07806 614753.
Avening History Project	Jean Chatelain	01453 834713
Avening Memorial Hall		07583 073604
Avening Oil Coordinator	Frances Lindley	01453 835115
Avening Parish Council Clerk	Shani Baker	01453 860379
Avening Playgroup	Angie Heslop	01453 832695
Avening Primary School	Jane Rushton	01453 833191
Avening Silver Band	Jim Hill	01453 834438
Avening Social Club	Derrick Ind	01453 835752
Avening Youth Club	Revd. Gerald South The Door	01453 834884 01453 756745

Cherington Village Hall	Wendy Eldridge	01285 841327
Cherington Parish Council Clerk	Beverley Rymer	01453 832100
Cherington Church Churchwarden	John Bate-Williams	01666 503544
Cherington Church Flower Team	Elizabeth Workman	01285 841294
Cherington Church Organist	Elizabeth Workman	01285 841294
Cherington Church PCC Secretary	Elizabeth Workman	01285 841294
Cherington Church PCC Treasurer	Paul Cable	cabes50@yahoo.co.uk
Community Café	Jennie South	01453 834884
Cotswold District Councillor	Richard Morgan	
Friends of Avening School	Nicky Dill	01453 833191
Over 60s Lunch Club	Christine Howell	01453 833246
South Cotswold Community Wellbeing Agent		01452 528491
Stroud Hospital	Reception	0300 421 8080
Tetbury Hospital		01666 502336
Women's Institute	Gwyneth Simpson	01453 836556

VILLAGE & AREA WEB SITES

Avening Parish Council: www.avening-pc.gov

Avening Church: www.aveningchurch.info

Cherington Parish Council: cheringtonpc.org.uk.

Cherington Village: www.cheringtonvillage.co.uk

Cotswold District Council: www.cotswold.gov.uk

Letter From Avening Parish Council Leader



Other than a panic about power (or lack of it), I think the Parish Council show on 18th May went really well, and I hope everyone had a great time. It was the first time in this central location, and I have heard some really positive comments. It's good to reflect why we have this event – it originates from what was the annual parish meeting, where the PC invited local clubs and organisations into the hall for the public to see what was available in the village. The last time we had it in the old format, other than those presenting, only about 3 people turned up, which was obviously a waste of everyone's time and energy. In the last 3 years, following some head scratching and a 'eureka moment' we have developed the format into the event that we had on the playing field, and this year we had at least 250 people attend. That's hundreds of people talking to organisers, craftspeople, trades and artisans! I know that contacts were made, products were sold, and more importantly, memories were created. I hope that in years to come people will reminisce about events like these.

Of course there is a cost involved in making the show largely free (it works out at a around £2 per household from the precept), but I see it as an important investment in our future, both for Avening as a vibrant and attractive place to live, and for future generations who might carry on or reinvent these traditions. The reason it costs so little is because the vast majority of the show is created by volunteers – I give my wholehearted thanks to EVERYONE who played a part, as we really couldn't do it without you.

One of the tables at the show displayed our revised plans for the playing field improvements. We have been to a number of events over the last month, and dropped details in to every household - during this process we have received some useful feedback on the fine detail. This marks the end of the consultation, and we will now take the scheme to the planners so they can review the elements that need planning permission – we do hope you will show your support as the details are posted. Work will start on 10th June to make the north-east entry path suitable for disabled access, and the dog-proof safety fence will be installed as soon as we have completed the tender process later this month. Other work will progress once suitable outside grant funding has been confirmed.

At our request Highways have recently installed a number of drop kerbs in the Sunground area. I have received complaints that people are parking

across them, and also on the nearby pavements – one person was stranded on the road and couldn't get home without assistance. I do appreciate the difficulties with parking in the area, but it is an offence to block a drop kerb, and I have asked our PCSO to take appropriate action with offenders – please be aware that tickets may be issued!

By the time you read this, we will have had the European elections, and will soon have a new prime minister. Closer to home, following the local elections Richard Morgan continues as our District Councillor, although Cotswold is now run by the Lib-Dems. During the campaign, it was pleasing to see that the work we are doing in Avening was called out in three features in the Tetbury and District News – it's nice to receive external recognition. We now have a new PC team, who I know will bring different skills and a new dynamic. Having been re-elected as Chairman, I am looking forward to working with them all.

Tony Slater



IND PLUMBING & HEATING *your local experts*

- ✔ Design and Installation of Efficient Gas and Oil Fired Heating Systems
- ✔ Boiler Replacement and Upgrades
- ✔ Unvented Hot Water Installation Specialists
- ✔ Hard Water Treatment and Salt Sales
- ✔ Drinking Water Purification
- ✔ Quooker Boiling Water Taps
- ✔ General Plumbing Repairs
- ✔ Leadwork and Fibreglass Roofing

Call our friendly team today on
01666 503 632

Email info@indplumbingandheating.co.uk
Web www.indplumbingandheating.co.uk

Avening and Cherington Churches



What's most important? Wealth? Holidays? Latest phone, car? How we look?



Surely not. Three years ago the Bishop of Gloucester, Rachel Treweek, embarked on a campaign to raise awareness of body image anxiety in young people and the pressures they face through social media, TV and advertising to look a certain way.

Bishop Rachel said, "Over the last few years I have been speaking publicly about this issue and promoting the message that who you are, is more than how you look. I launched a social media campaign challenging negative body image and encouraging young people to look within to discover true value and beauty. This has given me a great opportunity to speak with young people about my

own identity in Christ and my desire for every person to discover their worth and potential as a unique individual created in the image of God.

She has described one experience at a 'Messy Church' event:

"The previous week, the suicide of a popular young woman in the wider community – apparently as a result of low self-worth – had rocked the community. Leaders were counselled to use the activity sessions to simply listen to what people needed to say. Before the session was over, one woman had confessed to living with abuse for years and asked for help. Anonymous prayer requests collected for leaders to intercede over in the coming week were dominated with cries for help about mistreatment at work. An emergency meeting of the core team was called to plan how to respond pastorally to this unprecedented outpouring."

"We're asking for action! 'Say1thing' is an initiative as part of the #Liedentity campaign, which asks the simple question: What do you value about your best mate?"

Bishop Rachel has for some time been encouraging people, especially youngsters, to tell a friend why it is they like them. Now she is encouraging the same on social media: "We are living in a society where our value is being determined by what we look like, rather than who we are from the inside out. So we are encouraging all people on social media to change this message by posting

a picture of their friends or family and sharing one thing they value about that person with the hashtag #Say1Thing.

Few things can be more important than ensuring that all members of a community can live out their lives free from undue stress and unnecessary challenges to their mental health. Let's do all we can in our villages to ensure this is so.

All Age Services

At our May service we heard the story of Zacchaeus who climbed a tree in order to get sight of Jesus. As one whose past action had been somewhat 'dodgy' Zacchaeus had certainly not expected Jesus to invite himself to supper: this proved a turning point for him. Jesus invites all, even the most unlikely people, to follow his way.

Our next service will be at Cherington, 10.30 am on Sunday 9th June.

Gerald South, Parish Priest for Avening and Cherington
01453 834884 gp.south@btopenworld.com

From the Registers

26th April Interment of ashes of Richard Whiting (Avening)

28th April Baptism of Edward Curtis (Avening)

Church Services and Events

June	Holy Cross Avening	St Nicholas Cherington
2 nd	11.00 am Eucharist	9.30 am Eucharist
4 ^h	12.30 Praying the Parish	
8 th	12noon Visiting bell ringers	
9 th	8.00 am Eucharist Fete	10.30 am All Age Service
15 th		10 am PCC meeting
16 th	11.00 am Eucharist	9.30 am Eucharist
23 rd	11.00 am Eucharist	9.30 pm Morning Prayer
30 th	Café Church Service	
July 2	12.30 Praying the Parish	
7 th	8.00 am Eucharist	9.30 am Eucharist
14 th	11.00 am Eucharist with Baptism	

Avening W.I.

Following a last minute cancellation of our May speaker due to illness, we were extremely lucky to secure an excellent replacement. Ian Caskie, a volunteer on the SS Great Britain, came to speak about the history and recent developments of this amazing ship. His inspiring talk and enthusiasm left many members keen to arrange a visit in the near future. The new 'Being Brunel' exhibition which allows you to enter the great man's head and experience significant moments in his life, sounded particularly intriguing.



Skittles match

After a very close fought match our skittles team have made a good start in this year's Gloucester Federation competition with a win against Upton St Leonards WI. We are now due to meet Tibberton and Taynton in the next round.

Our May walk was rather wet, but nevertheless very enjoyable. Several members walked along the canal from Chalford to the Daneway admiring the

wild flowers and beautiful trees. We also spotted a proud mother swan sitting on her newly constructed nest. After a good lunch in the Daneway pub we returned via Chalford village, enjoying views of the cottage gardens.

We still have some seats available for our coach trip to Hilliers Garden on Wednesday 19th June. The trip will cost £25, which will include travel and admission to these inspiring gardens. Please telephone Sue Osborne on 839327 as soon as possible if you would like to join us. The coach will be leaving the layby opposite the school at 9.15am and plans to return at 6pm. All welcome.

Other events planned for June include a walk around Miserden; a Group Meeting with Tetbury and Kemble WIs at the Goods Shed; and the Avening Church Fete where we will be serving Cream Teas and other refreshments.



A wet walk!

The speaker for our June meeting will be Rachel Shackleton with a talk entitled 'What's in the hedgerow? – building immunity naturally.' Rachel is a herbal medicine practitioner and naturopath who is passionate about maintaining health and wellbeing through natural remedies. This will take place on Thursday 13th June at 7.30pm in the Memorial Hall. Anybody wishing to join us will be most welcome.

Helen Haiselden

Exciting news! Terracycle and Colgate recycling at Avening Primary School

Did you know? Each toothbrush you use and throw away takes over 400 years to degrade! There are eco-friendly alternatives available but if you don't want to make the change then help Avening School and the planet by recycling your old toothbrushes and tooth cleaning products at school. Bring in any of the items seen below and pop them in the Terracycle box or leave them in the bag that will be left on the gate. When the box is full we send it for recycling and get much needed money for the school.



***Any brand of toothbrush/
toothpaste can be recycled – not
just Colgate***

***We are a registered public
collection point***

***You can also drop items at 56
Sandford Leaze***

Other Recycling Tips

- Save your empty crisp and biscuit packets and take them to Tesco Tetbury where you can now recycle them with old plastic bags. The container is just outside the main doors.
- Paper coffee cups/cups from kids parties/Tetrapak – All these can be collected and recycled at Tesco in the small car parking area on the left as you drive in.

Puzzle Corner

			7		8	1	5	
1		7	2					6
				5		9		7
				8		5	6	3
	1	3	6		7	2	4	
8	4	6		2				
7		4		1				
9					6	8		2
	2	1	8		5			

Answers on page 37

Sudoku

Fill in the blank squares so that each row, each column and each 3-by-3 block contain all of the digits 1 - 9. If you use logic you can solve the puzzle without guesswork.

© 2013 KrazyDad.com

Across

1. Young person (5)
4. Sharp pointed implements (7)
8. Butterfly larva (11)
9. Exhilarated (8)
10. Yield (4)
12. Humble (6)
13. Ineffectual (6)
16. Movable barrier (4)
18. Drover (8)
21. Glorious (11)
22. Scaling devices (7)
23. Surface boundaries (5)

1		2		3		4		5		6		7
8												
9								10				
								11				
12								13			14	
								15				
16		17			18							19
				20								
		21										
22								23				

<http://www.puzzlechoice.com>

Down

- | | | |
|-----------------------|---------------------------------|------------------------------|
| 1. Luxury craft (5) | 6. Big (5) | 14. Mass of frozen water (7) |
| 2. Articulated (7) | 7. Earnest (7) | 15. Furniture items (6) |
| 3. Innocuous (8) | 11. Sudden unexpected event (8) | 17. Diffident (5) |
| 4. Disturbances (6) | 12. Sorcerous (7) | 19. Days of the month (5) |
| 5. Snakelike fish (4) | | 20. Fiend (4) |

AVENING PHOTOGRAPHY EXHIBITION 2019

8TH-9TH JUNE IN AVENING CHURCH
JUNIOR/SCHOOL EXHIBITION CONCURRENT



FOR INFORMATION AND ENTRY FORMS:

BUCHANAN.PG@GMAIL.COM

PICTURE HANGING 6TH-7TH JUNE.

THEMES, FOR WHICH PRIZES WILL BE AWARDED:

“ON OUR DOORSTEP”, “FURTHER AFIELD”,

“MY FAMILY AND OTHER ANIMALS”, “WATER”

“CAPTURING THE CHARACTER”, “WILDLIFE”



Avening Playgroup

We are very pleased to announce that we have recruited a new member of staff. As from 3rd June 2019, our Deputy Early Years Manager will be Liz Blick. The staff and committee are very much looking forward to working with Liz and we hope she enjoys working with all of us!

After the Easter holidays the children planted some cress seeds and then watched them grow. There were lots of discussions about how seeds grow and the children came to the conclusion that water and sun certainly help. Once all the seeds had grown the children were able to take them home to show their families.

On the theme of growing we have been looking at life cycles, in particular those of the butterfly and the frog. The children have coloured in pictures of eggs, caterpillars, chrysalis and butterflies. They did exactly the same for the various stages in a frog's life cycle and then they stuck them onto paper in the correct order.

The children have also completed butterfly dot-to-dot pictures and symmetry paintings, which now accompany the lovely daffodils and blossom on our tree display. There have been lots of stories involving frogs and butterflies, and lots of drawings of them, as well. They have also been looking for caterpillars in our garden and one child found one at home, made a home for it and brought it into playgroup for the other children to see.



This week the children have really enjoyed building dens, especially on the climbing frame, and have pretended to have picnics in them. There has been a great amount of mark making – it is amazing what a new box of playground chalks and a bucket of water with a brush can do to encourage their imagination. I have never seen the playground so colourful!

The children have also been busy preparing themselves for the Avening Parish Council Show. In keeping with the frog theme they have been learning a frog counting song and have been performing it excitedly at playgroup. I hope they will enjoy it just as much on the day!

For more information about our lovely playgroup, please call us on 01453 832695 or email aveningplaygroup@gmail.com. We are open week day mornings during term time.

Angie Heslop



We're going on a bear hunt...join us on an adventure around Avening to spot some amazing bears...we're not scared!

Avening School and villagers will put on an amazing display of bears around the village for you and your family to find.

For more information visit facebook.com/friendsofaveningschool or email aveningbearhunt@outlook.com

Cherington Show - Exploring the Fun Dog Show

We are delighted to be able to speak with one of the competitors of the Cherington Show Fun Dog Show, which is being held this year on Sunday 21st July from 1.30pm to 5pm, with the Fun Dog Show itself at 3pm.

Thanks so much for taking time out of your busy Dog Show training regime. Can you tell the readers a little about yourself?

'Well, my name is Hector Arden, and I live in Cherington. I suppose some people would call me a 'Sprocker' but I'm pretty sure I'm human, just like my Dad. We go everywhere together - in the car, on the farm, on the sofa, out to drinks and dinner, and especially training for the show. When I'm not with my Dad, I love to spend time with my cousins Goddess Venus and Prince Harold, and we have a great time sniffing lots of things.'



What is it you like most about the Cherington Show?

'Oh, I've only been twice before. It's been going for sooooo long! I was born a couple of years ago, but I think the show is in it's 75th year this year. That's ancient! But I loved last year that there were so many dogs there both competing in the Fun Dog Show and just wandering around. I loved meeting new friends! There's also loads of dog bins and water bowls dotted around, so I was never thirsty.'

So you love that it's dog friendly. I really was asking what stalls or attractions did you like the most.

'Ah. That's more difficult. Being my first year last year, I didn't know what to expect. I did enjoy clearing up the lovely tasting cake crumbs from the floor around the tea tent, licking up drops of ice-cream which were melting in the heat, and hanging around the BBQ until I heard that they also sold something called 'hot dogs', so I high tailed it out of there! Down on the village green, I really liked taunting the rare breed sheep and birds, but the College Beagle pack stationed there soon told me off. I wasn't so interested in the designer clothes, jams, books, vintage items, plants, kids fun area, tractors and so on, but the smell coming from the cooked crafts in the village hall was great!

So what's your favourite class at the Fun Dog Show itself?

I would love it if there was a 'glossiest coat' class, or 'most hyperactive' class as I'm sure I would win. As it is, I have been practicing very hard for the 'most waggiest tail' class.

Any tips for other dogs who may be reading this and thinking of entering?

Yes. I find that when parading through the village when Dad takes me to visit people, it is very important to practice swinging my bum left and right while my tail counter swings in the opposite direction. Keep it up all the way, and when you arrive at your destination, work that tail hard in a waggy sprint as you greet the person you are seeing. I call this technique 's'wag'ger'. I learnt it from Dad.

Hector, thanks for your time, and good luck with your training.

The Cherington Show is in it's 75th year this year, and still going strong. Come and spend the afternoon with us on Sunday 21st July 2019, from 1.30pm (BBQ only from 12.30pm). £2 per car, with parking at both ends of the village. The road will be closed to through traffic on the day. Loads of things to do, as above, plus much more.

See our new website www.cheringtonshow.com for details of horticulture and craft competitions including kids, as well as other information. Be sure to follow us on Facebook too! Search for our page 'Cherington Show'.

We look forward to seeing you then!

A Bite to Eat?



Arranging a Group Lunch, Christening other social event ?

Avening WI 'Bite to Eat' scheme may be able to assist with your catering needs. We can provide and serve a selection of freshly prepared sandwiches, scones, cakes etc; a fork or finger buffet; or a two course meal.

For prices and any further details phone Liz Knowles 01453

O.L.Cottle Family Business

**Hand Carved Memorials : Cremation Plaques
Additional Inscriptions : Renovations and Cleaning
All Types of Stonework**

**Tel: 01453 762877
36 Slad Road, Stroud, Gloucestershire**



Avening School

Bears, Bicycles and Bunting!

After a busy half term for all children, particularly Years 2 and 6 who did their SATs, there is so much to look forward to in the run up to the end of the academic year. The y6 children will be putting their helmets on and getting on their bikes as they take their cycling proficiency course. There are sports events happening in abundance, with matches and tournaments in rounders, tennis, athletics and cricket. We also have 'Chance to Shine' cricket coaches coming in to run cricket workshops for the whole school, giving all children the opportunity to experience the sport. We also have our annual school sports morning coming up with pupils competing in their school houses for the winner's trophy.

After many months of being out of action, we are delighted to announce that the surface in our top playground has finally been replaced with the essential work being funded by Sports England, just in time for the warmer weather. We also have plenty of activity happening in the school garden at the moment with weekly forest school lessons, after school forest school club and of course our weekly Fledglings session for pre-school children on a Friday afternoon. Please contact the school office for more information on Fledglings.

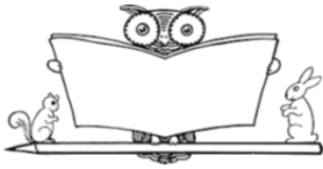
Our Avening musicians are getting ready for one of the highlights of our school calendar, the annual musical soiree held towards the end of term. The children will be showcasing their musical talents with performances on violin, guitar, piano and singing.

FOAS are looking forward to dusting off the bunting and hosting their third annual Bear Hunt on Saturday 15th June which aims to raise vital funds for the school to help pay for essential classroom resources. If you are interested in hosting a bear, donating a cake to the event or to find out more information, please visit facebook.com/friendsofaveningschool or email aveningbearhunt@outlook.com.

For further information about this busy place of learning please see our school website: www.avening.gloucs.sch.uk For further information about this busy place of learning please see our school website: www.avening.gloucs.sch.uk

Alex Adcock

Avening Church of England Education Fund (ACEEF)



The trustees of ACEEF have limited funds available to assist Avening residents under 25 with their education. These grants are intended to help ensure that young people in the village are not deprived of the opportunity to receive good education suiting their aptitudes and abilities.

If you, or your children, are in need of such support, please request an application form by phoning 01453 834884 or emailing gp.south@btopenworld.com or from 5 Orchard Field GL8 8PE.

The form should be completed and returned by 7th July.

Avening Church of England Education Fund (ACEEF) Application for an Education Grant

The trustees of ACEEF have limited funds available to assist Avening residents, who are under 25, with their education. These grants are intended to help ensure that young people in the village are not deprived of the opportunity to receive good education suiting their aptitudes and abilities.

Please complete this form as fully as possible, continuing on the back if necessary. Then send it, by 7th July, to: ACEEF, 5 Orchard Field, Avening, Glos. GL8 8PE or complete and send electronically to: gp.south@btopenworld.com If the person (or people) who would benefit from a grant is under 16 the form may be completed by a parent or guardian, otherwise it should be completed by the applicant themselves.

Name of person completing this form and, if different, name(s) of those who would benefit from a grant:	
Address:	
Phone:	email:
Age(s) of those who would benefit from grant:	
Amount of grant being applied for: £	
If your application is successful who should the cheque be made payable to:	
Details of how a grant would be spent (Please continue on a separate sheet of paper if necessary)	
Any other fundraising that has been, or will be, supporting this need	



Christian Aid Big Brekkie

Avening and Cherington villagers help to change the world over breakfast!

We served over 80 breakfasts at The Big Village Brekkie on 11th May - one of hundreds taking place across the country - and raised £320 for Christian Aid. Thank you very much to you all for coming. Further donations still welcome and can be popped in to 5, Orchard Field, Avening.

This year Christian Aid has a special focus on health care. In Serra Leone – a country that has been scarred by civil war and the



worst Ebola outbreak in history – people are working hard to rebuild health services. But without enough clinics and trained nurses, childbirth can be a life-threatening time. £200 can help pay for a delivery bed so women can give birth comfortably. £60 will buy a starter kit for community health worker. With a bicycle, torch, raincoat and boots they can visit their patients in all weathers. I hope you can begin to see how the money we have raised really will help to make a difference. Thank you!

However, like last year, the Big Brekkie was more than just a Christian Aid fund raiser. It was a great opportunity to meet over breakfast, enjoy spending time together and do some important 'community building'. None of this would have been possible without the generosity of the WI and FOAS who lent us mugs and tablecloths and of course a great team of volunteers who cooked, shopped, washed up and generally stepped in for all the jobs that needed to be done for such an event. Thanks to them all and here's looking forward to the next one!

The Christian Aid Big Brekkie Team



FOREVER YOUNG

OVER 60s LUNCH

1ST Wednesday of each month 12.30 start

Avening Social Club

Phone Chris Howell on 01453 833246 to book your lunch

Main course, sweet and tea/coffee all for £6.00

A big thankyou to all who have supported us in the past

PETER SAVAGE

**ALL FENCING & GATES SUPPLIED & FITTED
GROUNDWORKS AND LANDSCAPING UNDERTAKEN
SEASONED FIREWOOD – LOGS & KINDLING**

**Tel: 01453 833239
or 07785 788335**

Traditional Acupuncture

Holistic Massage

With Paloma Sparrow
At the White Practice,
Market Street,
Nailsworth

& St Luke's Therapy
Centre, Cainscross
Road, Stroud

Dove Therapies



**Supporting health
through life**

Free 20 minute
consultation - in
person or by phone

For more
information or to
book an
appointment

07528 374 002

hello@dovetherapies.co.uk
Www.dovetherapies.co.uk

Do you have a mole problem?

With over 30 years experience in traditional mole control I can effectively, discreetly and humanely remove the culprit(s)! No gas, chemicals or poisons used and completely safe to children and pets.

No Mole – No Fee!

**07766 132934 (Days) 01666 890344 (Evenings)
www.gbstateservices.com**

Member of the British Traditional Molecatchers Register. Member of the Guild of British Molecatchers
BPCA/RSPH level 2 certificate in pest control. Fully insured and references available

Call now for a free, no obligation site survey and quote.



AVENING CHURCH FETE & FUN DOG SHOW

Sunday 9th June at 2.00pm.

Famous Duck races • Raffle
Bottle tombola • Delicious Cakes
Teas • The Elegant Sausage
Childrens Area • Bric-A-Brac
& Much more



With a photographic
exhibition and competition
in the church

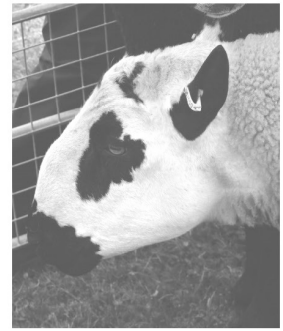
For details of stalls and offers of help contact
Stephanie email
stephanie2432@hotmail.co.uk

For the photographic
competition details from George
Buchanan email
buchanan.pg@gmail.com



See our new website
for competition and
day schedules:
cheringtonshow.com

Follow us on Facebook:
Cheringtonshow



The Cherington Show Sunday 21st July 2019

Save the date for our village show
from 1.30pm!

Crafts, horticulture, rare breeds, Rudi the TV Otter, BBQ, Pimms, Kid's Zone, fab raffle prizes, tea tent, morris dancers, cakes, plant stall, vintage tractors, designer clothes, art show, Cherington produce stall, jams, books, and MUCH more! **GL8 8SN. 75 years young!**

cheringtonshow@gmail.com The village will be closed to through traffic. £2 per car entry



**Remember to bring your four legged
friends to the Village Fete Sunday 9th June.**

**Agility course from 2pm and the Fun Dog
Show from 2.40pm.**

Events include:

- *The friendliest puppy*
- *Best veteran dog*
- *Best rescued dog*
- *Best child handler*



Forever Young Over 60s Lunch

This is one of Avening's success stories, 19 years and still going strong.

Christine Howell started the group initially with the help of Lynn Uzzell and now with Jean Scotford. They work tirelessly to cook a 2-course meal on the first Wednesday of each month at Avening Social Club.

A few of us have seen people come and go but many of us still enjoy the meal and the chance to catch up with friends.

I would like to thank Christine and her helpers for all the wonderful meals that we have all enjoyed over the years and of course to everyone who comes along for a good chat and makes it a very enjoyable occasion.

Maureen Stone



S Woodman Garden Services



General Gardening
Grass Cutting ~ Hedge Cutting
Tree Cutting ~ Fruit Tree Pruning
General Ground Clearance
Good Rates / O.A.P Discount

Please Call: Home: 01453 834744 Mobile: 07814206803



YOUR Community ALERTS Gloucestershire



Sign up today for local news and alerts in
your community.



By registering today you will receive news and appeals, local crime information and crime prevention advice - directly to you.

Registering with us is completely free.



It will also help your local policing teams better police your neighbourhood.



www.yourcommunityalerts.co.uk

Cas Boddam-Whetham. MCSP RCT
Chartered Physiotherapist
Craniosacral Therapist

21 Nags Head Lane, Avening, Glos GL8 8NZ

01453 834 834

Web page: www.casbw.co.uk

Member of the Organisation of Chartered Physiotherapists
in Private Practice

Registered with the Health Profession Council
and all major medical insurance companies

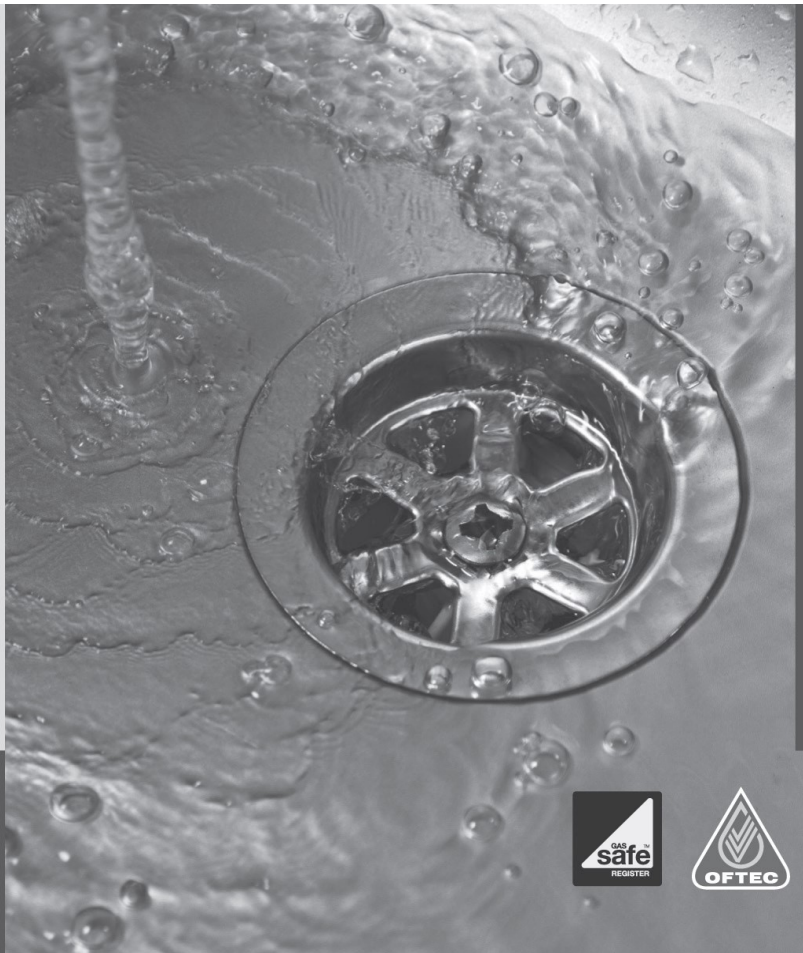
For treatment, advice or a friendly chat about your problem.



**Plumbing
& Heating**
(Cotswold) Ltd

- Oftec and Gas safe registered
- Boiler replacements
- New build and renovations
- Heating updates and alterations
- Underfloor heating
- Bathrooms
- Water softeners
- Over 35 yrs experience
- Tetbury based

Clive Alley t: 07584414624
Scott Wilkins t: 07717750247
e: scott@awplumb.co.uk
www.awplumb.co.uk



Brook Field (Water Meadow)



Implementing change will unfortunately always raise questions, gain curiosity and cause a stir in a village of this size.

It's been uplifting to hear positive comments but unfortunate to also receive so much negative feedback about the Brook Field over the last couple of weeks.

After Avening Court was taken over and the land was acquired by the owner of the Court, it has been both my goal as Estate Manager, along with our village farmers Sam and John Powell, to turn this piece of scrub waste land into its former beauty residents have spoken so highly of.

As you will have seen, considerable amount of ground work has undertaken and the deemed unsafe dead trees over hanging the road have now been removed even making driving along the road a little clearer and safer. The hollow trunks have been donated to the Barn Owl Centre in Gloucester.

What we intend to do is turn this piece of land into a Nature Reserve-cum-wild flower meadow for the people of Avening, erecting a brand new fence, plant new trees and fix up the old wall that surrounds it. The wild flower mix has been carefully selected to provide a colourful display of native flowers which will provide a nectar source for invertebrates whilst not including species prone to invading water courses. A small number of young stock will graze the field after the flowering period, much as the farm used to in the past.

We would like to take this time to thank you all for your patience and to those of you that have given us such astounding feedback. We just ask others that you give us a little more time whilst we transform this land from an eyesore to a piece of land that will look both aesthetically pleasing and safer for all the village to enjoy as they enter and leave Avening.

With Best Regards,



***Martyn Hanley, Avening Court
John and Sam Powell, FL Powell and Sons (Court Farm)***

Tchaikovsky
Capriccio Italien

Mendelssohn
Violin Concerto
Soloist: Olivia Doflein

Rossini/Respighi
Boutique Fantasque

Trim
Slavic Rhapsody

Rimsky-Korsakov
Capriccio Espagnol

STROUD SYMPHONY ORCHESTRA

Conductor: Jonathan Trim Leader: Angie Spencer

Saturday June 22nd 7.30pm

Holy Trinity Church, Trinity Road, Stroud, GL5 2HX

- Tickets £12 (concessions £10) • Children under 14 free
- £1 reduction on tickets purchased prior to concert evening

Tickets from Stroud Sub Rooms Box Office 01453 796880

www.stroudsymphony.org.uk

STROUD
SYMPHONY
ORCHESTRA
CHARITY NUMBER 299456

COACHING

Are you facing challenges? Are you stuck, repeating the same old behaviour patterns? Would you like to see huge changes in your life either at work or at home?

Be the best version of you – gain clarity, take action and see positive results.

**Contact: Emma Clout MSc - Coaching
Psychologist**

emsclout@gmail.com / 07555 677955

Cirencester Foodbank

Cirencester Foodbank operates across the South Cotswolds and supports individuals and families.

In the 12 months to the end of March 2018, the Foodbank supported 3,851 clients, an increase of 30% year-on-year. To access Foodbank support, you need to be given a voucher. Vouchers are available from organisations such as Citizens Advice, P3, GP surgeries, churches, schools, mental health teams, Cirencester Signpost, Social Services, District Councils, Town Councils etc. Vouchers can then be redeemed at any of our Foodbank sessions. The Foodbank operates in Cirencester on Monday afternoons and Thursday mornings from the Ashcroft Church, in Tetbury on Tuesday mornings from the St Mary's Community Centre and in Fairford on Wednesday afternoons from the Fairford Community Centre. Our team will offer our clients a tea or coffee and pack the food for them. A food parcel contains food for a three-day period. We are also able to offer toiletries, household cleaning items, toilet rolls, baby food and nappies as well as pet food. Our teams will signpost onto additional help where appropriate and we are joined by P3 and Citizens Advice advisors in many of our sessions. Our aim is to not be needed, however, the Foodbank will continue to provide support until we reach that point.

The Foodbank is incredibly grateful to everyone offering food donations, funds and time. In the last 12 months just over 31 tonnes of food were donated (that's the weight of a petrol tanker!). Food donation points are available in Tesco Extra and Waitrose in Cirencester and Tesco in Tetbury. Please always check our website for items we are most in need of.

Thank you for all your ongoing support. For more information please visit www.cirencester.foodbank.org.uk or call 07506 174373



NAILSWORTH

George Street

Tel: 01453 705560



TETBURY CLINIC

23 Church Street

Tel: 01666 503531

www.georgevetgroup.co.uk

Hospital : 01666 823165

Equine : 01666 826456



24 hour emergency care



**Manufacturers of purpose made
joinery of all types**

Tel: 01453 885075

Email gkjoinery@googlemail.com www.gkjoinery.com



Fred Stevens Funeral Directors

We give immediate attention – 24 hours

Traditional and contemporary styled
funerals arranged

Individual, flexible approach

Well established, family-owned company with highly
experienced staff

Newmarket Road, Nailsworth, Gloucestershire GL6 0DQ

telephone 01453 832188

email@fredstevens.co.uk www.fredstevens.co.uk

Small Ads

FOR SALE : Camping equipment

- A small iron and ironing cover.
- A small Russell Hobbs kettle
- A SunnCamp toaster
- 4 Melamine dinner plates
- 4 Melamine medium plates
- 4 Melamine bowls
- Knives, forks, and dessert spoons with pastel handles
- An almost full 4 litre bottle of Elsan toilet disinfectant.

£30 for all Tel. Blackwell 834175

Going Green – the Great Biscuit Giveaway – Ascot comes to Avening!

‘YOUR BISCUITS ARE LOVELY!’ As praise goes, it doesn’t get much better than this verdict, yelled in our direction as we closed down our first Café ‘pop up’ stall at the Village Party in May. We lost



Sandra Hetterley and Clare Bebbington at the Café’s Pop Up Stall at the Village Party

count of the number of biscuits we handed to visitors to give them a taste of what the Café has to offer. Certainly, younger customers (or ‘Biscuit Hoovers’ as I now think of them) gave us a big thumbs up – and there was lots to talk about as we unveiled our events and activities for the early summer.

We’ll be changing colour in June with our first Green Café on the 4th - the eve of World Environment Day.

We want to start reducing our environmental impact and will be

trying out a number of initiatives that morning. We will avoid single-use plastic and try to reduce waste-to-landfill to zero; source our milk from Woeful Dane Dairies, our local organic producer; offer free coffee and cake for anyone joining the litter pick that morning; hold a plant-swap for green gardeners; and recognise our local environmental heroes. Customers have also been pitching in with ideas – from acting as a hub for collecting small-but-tricky recyclable items to hosting a get-together for anyone who works with previously-used materials...we know from the rag rugs that we’ve seen that there is lots of talent in the village!

We also thought it was time for a bit of a party and what better excuse than Ascot Week? Find your finest fascinator, fedora (or fez?), turn up in a trilby, pick up your panama and we’ll treat you to free coffee and cake: the bigger the hat, the bigger the slice. There’ll be sweepstakes for the week’s main races for anyone who fancies a flutter. So come along and ‘do’ Ladies Day from the comfort of the Café on June 18th!

Like most people we’re beginning to think about the summer holidays and for the Café this means launching our first Teenage Takeover. We want to offer a team of teenagers a chance to turn on the front-of-house charm, discover their inner Star Baker, choose the music, light up social media, manage a team, organise an event – whatever their talents might be – and gain a few CV brownie points too. They

will have help and guidance from some of the experienced Café hands but we hope they will come with their own ideas and inspiration. Want to do something as a family? Got Grandma visiting and want to keep her out of trouble? We're also on the lookout for a family (or two) who would like to give running the café a go – it's great fun (even the washing up isn't too bad).



Some of those who joined the Café's Walk to the Weighbridge on May 14th.

As ever, there's lots going on at the Café, including our regular Book Swap and Knit and Natter Tuesdays. Every month we hold one or two special events – the Walk to the Weighbridge on May 14 was one of the most delightful. It's not just coffee and cakes. But to paraphrase our young customer... 'OUR COFFEE AND CAKES ARE LOVELY'!

Follow us on Facebook (Avening Community Café) to keep up with everything going on at the Café – and don't forget we serve great coffee and home-baked cakes too!

TOAD HALL
TRULL FARM
TETBURY
GL8 8SQ



Your own private room for lunches, dinners, drinks, receptions, childrens parties, business meetings, exhibitions, film nights. Large screen and internet.

Kitchen plus smaller room available. Outside or "inhouse" catering. A marquee could be added if required.

**For Bookings and prices please contact :
 Fi Mitchell
 fimitchell06@btinternet.com
 01285 841229 07885 094393**



Our June Theme is Stress Awareness

4th June: Stress games

Group games that test team work under time pressure but with an element of fun!

11th June: Fruit freedom

Try new and different fruits and vegetables that will help to reduce stress in a healthy way!

18th June: Act it out!

Drama workshop where you'll act out different stressful situations and find solutions to them.



25th June: World stress

Experience the daily stresses of other young people across the world.

Check out the Facebook Page

Youth Club is for anyone aged 8 to 14, from Avening, Nags Head, or Cherington. We meet every Tuesday in term time from 6 to 7.30 pm at the Memorial Hall. **Once you're 13 we'll ask you to be a Young Leader and help out (don't worry, we'll give you training).**

Cost is just £1 a time to include a healthy snack. Just come along and see what's what if you haven't been before.

For parents or carers: The Youth Club is run by The Door (find their website at www.thedoor.org.uk). They provide qualified and experienced Youth Workers. You just need to leave an emergency contact number when you drop your young person off. If they come on their own, we need them to give us a number to contact.

Want more information? Contact Rev Gerald South on 834884 or John at The Door .

TONY'S CHARITY QUIZ NIGHTS

THE BELL, AVENING

1ST SATURDAY OF THE MONTH

£1 A PLAYER

A MAXIMUM OF 4 PLAYERS PER TEAM

ALL PROCEEDS TO THE COBALT APPEAL, CHELTENHAM



Well Done, Lily!

Avening's under 12 Young Person of the Year is Lily Walford. Lily has been a regular member of our Youth Club for some time and has impressed the leaders, and her contemporaries, by her very cooperative approach and positive attitude: she has even got stuck into the washing up without being asked.

She was presented with her award by Tony Slater, Chairman of Avening Parish Council, during the club evening on 14th May – as seen in the photo.

Our thanks must go to the staff from The Door for their leadership of the club which has grown in numbers very significantly over the recent months.

The Door are also now carrying out some research into our village from the point of view of the 12-16 year age group. We would like to be able to offer these young people a place in village life, for which we are seeking their ideas.

Gerald South



BEAUTIFUL BATHROOMS

from design to installation



PLUMBING & HEATING
Your local experts

Mobility Bathroom Specialists

Call our friendly team today on
01666 503 632

Email info@indplumbingandheating.co.uk
Web www.indplumbingandheating.co.uk

THE MARK TOWNSEND CHARITABLE
TRUST

AVENING OPEN GARDENS

SUNDAY 23RD JUNE 2019

11AM TO 5PM

ALL PROFITS MADE WILL BE DONATED TO
GROUPS WITHIN AVENING

FOR MORE INFORMATION OR TO SIGN UP PLEASE VISIT
WWW.THEMARKTOWNSENDCHARITABLETRUST.COM

ADULTS-£5

Children (under 12) - Free

Concessions - £3

Children's treasure hunt - £1



Puzzle Corner Answers

Y	O	U	T	H		N	E	E	D	L	E	S
A		T		A		O		E		A		I
C	A	T	E	R	P	I	L	L	A	R		N
H		E		M		S		S		G		C
T	H	R	I	L	L	E	D		C	E	D	E
		E		E		S		S				R
M	O	D	E	S	T		F	U	T	I	L	E
A				S		C		R		C		
G	A	T	E		S	H	E	P	H	E	R	D
I		I		O		A		R		B		A
C		M	A	G	N	I	F	I	C	E	N	T
A		I		R		R		S		R		E
L	A	D	D	E	R	S		E	D	G	E	S

3	9	2	7	6	8	1	5	4
1	5	7	2	4	9	3	8	6
4	6	8	3	5	1	9	2	7
2	7	9	1	8	4	5	6	3
5	1	3	6	9	7	2	4	8
8	4	6	5	2	3	7	9	1
7	8	4	9	1	2	6	3	5
9	3	5	4	7	6	8	1	2
6	2	1	8	3	5	4	7	9

Carpet and Upholstery Cleaning Specialists

Barden Clean

- Ultra fast drying times
- Environmentally friendly
- Removes stains
- High temp – sterilises carpet
- Improves air quality
- Removes dust mites
- Fully insured

CALL NOW

Michael Denley

**01453 752893
07541 002 891**

www.bardenclean.co.uk

dental
practice

townes
townes
associates

Family Dentistry You Can Rely On



www.familysmile.co.uk

Satisfaction rating:
more than 99%

100% of patients
asked would
recommend
us to family
& friends

Quote 'Villager' for a 50% discount on a full New Patient Examination
with x-rays for just £39.50. Telephone us on **01453 827474**



Avening Cinema Club

Avening Memorial Hall - Admission £5

Showing on

Wednesday 5th June

The Favourite

The Favourite is a 2018 period black comedy set in 18th Century England. The story examines the relationship between two cousins, Sarah, Duchess of Marlborough (Rachel Weisz), and Abigail Masham, later Baroness Masham (Emma Stone), who are vying to be Court favourites of Queen Anne (Olivia Colman). It is loosely based on historical events.



The film club runs on the first Wednesday of every month, at 7.30pm in the Memorial Hall. Please do check our Facebook page or contact Katy Upton for more information, and for the chance to vote on films.

Note: From September the f9lm club will move from the first Wednesday to the first Thursday of every month

Phone: 07806 614753. Email: katywingrove@hotmail.co.uk

The film club is a not for profit community event. Any profit made after screening/licence costs will be donated to local charities.

PETER JOY

Sales & Lettings

Sales

01453 833747 nailsworth@peterjoy.co.uk

Lettings and Management

01453 833847 lettings@peterjoy.co.uk

PROUD SUPPORTERS OF AVENING PLAYGROUP

Dying without a Will. Now that's a real tragedy.

No-one likes the thought of dying, so it's hardly surprising that almost 3 out of 5 UK adults don't have a valid Will (*source: www.unbiased.co.uk 2010*). Yet having one is one of the most important arrangements you can make during your lifetime.

My name is David Martin. I live in Nailsworth and I'm the local consultant for *Steele Rose & Co* - one of the UK's Premier Professional Home Visit Will Writers. After 22 years serving my country in the RAF, I have spent the last 28 years of my life professionally advising my clients on all personal financial matters and specialising in Wills.

Writing a Will is easier and cheaper than you think. It also ensures that your wishes are carried out simply and efficiently - causing the minimum of anguish for those you leave behind. If you would like to discuss your Will arrangements, redraft an existing Will, Lasting Powers of Attorney, or other associated legal services, at a mutually convenient time in the comfort and privacy of your own home, please contact me:



David Martin

David Martin, local consultant,
Steele Rose & Co
(Nailsworth & surrounding areas)
01453 836699 (M) 07973 405997
Email: dcmartin@hotmail.co.uk
www.steelerose.co.uk
Members of the Society of Will Writers



$$x^2 + y^2 = r^2$$

Are you taking
Maths A-level or GCSE
this summer?

$$\sin^2 \theta = 0.5$$

Would you like some help with your revision from an experienced Maths teacher?

If so, contact Gerald South

01453 834884 or gp.south@btopenworld.com

Donations to the appeal by the Bishop of Gloucester in aid of several initiatives including Allsorts, a Gloucestershire charity supporting over 300 families who have a disabled child, and education in Western Tanganyika.



STEVE FLOYD PEST CONTROL ERADICATION & PREVENTION

E: stevefloydpestcontrol@gmail.com

www.stevefloydpestcontrol.co.uk

Fully Qualified (25 years experience)

Fully Insured

T: 01285 643750

M 07933 357373



Locally-Based Charities

This table gives information about charities which are based in and around Avening and Cherington. Periodically, we will give a more detailed outline of what each organisation does.

Please let us know if any information is incorrect and also if you know of any other charities which should be included - we know there are plenty for this list.

Charity	Purpose	Further Information
Avening Church of England Educational Fund	To support and promote the education of those under the age of 25 resident in the parish of Avening.	Stephanie Hamilton, 07796 981308
Avening Playgroup	To provide funded early education for two-, three- and four-year -old children.	01453 832695 Angie Heslop; avening-playgroup@gmail.com.
Friends of Avening School (FOAS)	FOAS raises money to help with various projects and activities at the school.	01453 833191
Friends of Little Stars	Fundraising and support for Little Stars School for underprivileged children in Varanasi, India	Kieran Archer 01453 832992 littlestarsschool.org
Hop, Skip & Jump Foundation	Provide high quality respite care for children and young adults with disabilities and SEN	hoskipandjump.org.uk 01453 836390 marcoms@hoskipandjump.org.uk
Horsfall House	Provides nursing care for residents, a Day Centre 6 days a week Home Care and meals on Wheels in the local area.	01453 731227
Longfields	Supporting any adult affected by life-limiting illness to live well; to die well; and to care well.	01453 886868 day.services@longfield.org.uk
Mark Townsend Charitable Trust	Providing help with whatever life circumstances may incur.	www.themarktownsenedcharitabletrust.com 01453 832799

Avening Parish Council



The minutes of the meeting will be published shortly, but some of the items discussed are summarised below:

New Council

The new Parish Council is now in place and with 2 volunteers for co-option which will be finalised at a later meeting. The Council will then be up to full strength.

Crime

The Crime Report was unavailable for April.

Dropped Kerbs

A number of residents have reported that cars and vans have been parking across the various dropped kerbs in the area. This is an offence - the police have been informed and will be patrolling regularly, potentially issuing tickets to offenders. Please think before you park. The kerbs are for the use of the disabled and people with pushchairs.

Annual Village Show

The Council have been busy with final arrangements for the Village Show.

Playing Field

Plans for the improved facilities have been positively received, with additional suggestions being made. The improvement work to the footpath connecting Sunground to the playing field is due to start in June. Fund raising will now begin for the der scheme.

Memorial Hall

It was reported that the alarm was sounding all night recently. If the hall alarm is sounding, please call Mr John Collinson on 07941210284. A notice will be placed at the hall with emergency contact details

Highways

Please let the Parish Council know of any large potholes, but they can also be reported directly to Highways via their website and contact number.

Next Meeting

The next meeting is on the 20 June.

The Parish Clerk can be contacted via email: parishclerk@avening-pc.gov.uk or by phone: 07814 900512; 01453 860379

Cherington Parish Council

Election of Chairman and Vice-Chairman

Cllr Mike Mitchell was proposed as Chairman by Cllr Gegg and seconded by Cllr Workman. Cllr Gegg was proposed as Vice-Chairman by Cllr Workman and seconded by Cllr Arden.

New Planning Applications

The Council had no objections to the following applications for Cherington Park:

19 April 2019 19/01518/TCONR: One medium Walnut tree to be reduced by approx a third. Status: Awaiting decision

9 April 2019 19/01346/TCONR: T1 - Walnut tree to be reduced by approx 1-2 m in every direction, to maintain its attractive size and shape. Status: Awaiting decision

21 March 2019 19/01098/TCONR Status: T1 - medium size Maple to be removed as it is growing as part of a small clump of trees and is very one sided, T2 - small single stem Silver birch tree to be removed as it is very tall and thin with very little canopy. This will allow more room for surrounding trees to spread their canopies. Decided: No objection

14 March 2019 19/00975/COMPLY: Partial compliance with Condition 3 (design details) of Consent 18/00810/LBC - Alterations to windows and roof lights in stables/coach house. Status: Unknown

28 February 2019 19/00775/COMPLY: Compliance with condition 11 (external lighting) of permission 16/02422/FUL - Refurbishment of Coach House and Stables for use as stables; construction of boundary walls and fencing; restoration of Croquet lawn to include new boundary walls. Status: Decided: Application Permit

The Council had no objections to the following applications for the Coach House, Cherington Park:

19 April 2019 19/01240/COMPLY: Partial compliance with Condition 6 (details) of permission 16/02422/FUL and Consent 16/02423/LBC - Refurbishment of Coach House and Stables for use as stables; construction of boundary walls and fencing; restoration of Croquet lawn to include new boundary walls. Status: Awaiting decision

28 February 2019 19/00774/COMPLY: Compliance with condition 3 (details) of consent 18/04345/LBC - Relocation of approved staircase in the Coach House & condition 4 (records) of consent 18/02967/LBC Removal of existing stair and replacement with two staircases in different location to allow access to reinstated first floor in The Coach House. Status: Decided: Application Permit

28 January 2019 19/00325/FUL & 19/00326/LBC: Proposal for first floor accommodation to the Coach House Status: Awaiting decision

For further information please visit www.cotswold.gov.uk and search on the Planning pages.

Infrastructure

As discussed at the Annual Parish Meeting, the council will contact Gloucestershire Highways to discuss options for improving access to the Village Hall for those with mobility issues and also for dealing with large vehicles turning by the green. They will write to thank the manager at Aston Down for repairing recent damage to the green. The council discussed dumping of bags of dog waste at the top of Westrip Lane and also the dangers of swimming in the lake.

Next Parish Council Meeting

This will be held on **Tuesday 25th June at 6pm** in the Village Hall. An agenda will be placed on the notice board and cheringtonpc.org.uk. The Parish Clerk can be contacted on 01453 832100 or via email at cheringtonparishcouncil@yahoo.co.uk.



- **Dentistry for all the Family**
- **Private and Denplan**
- **Cosmetic treatment**
- **Tooth whitening**
- **Hygienist**



Robert W. Carter B.D.S.
7 New Church Street . Tetbury . Gloucestershire . GL8 8DS
Telephone (01666) 503788

0100315

NAILSWORTH ACCOUNTANCY

ACCOUNTANCY SERVICES FOR SELF EMPLOYED AND LIMITED COMPANIES

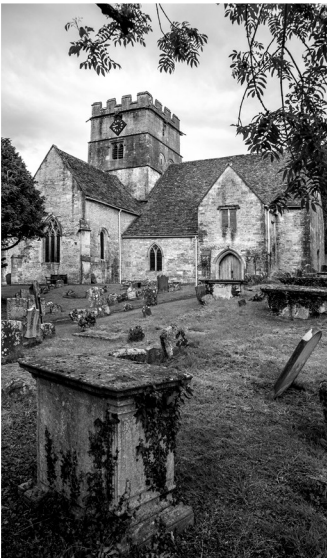
Self-Assessment Tax Returns
Accounts Preparation For Small Businesses
Company Accounts
Business Start Ups & Company Formations
VAT Returns and Tax Planning

For a competitive quote telephone Emma

01453 835050

TOWN HALL NAILSWORTH

Avening Churchyard



This churchyard must have been used for burials for over 900 years, possibly a good deal longer. The new area, adjacent to the rear of the school and end of Orchard Field, has been in use since the early 1970s and is now nearly full.

We are very reluctant to close the churchyard for any future burials and are therefore investigating ways in which this will not be necessary. One possibility is to re-use areas which have not been used for well over 100 years, a procedure that is used in some other churchyards.

This requires special permission (called a Faculty) and we are currently proposing to make such an application for the area of the churchyard to the south of the church where there are no memorials and there seem to have been no burials since the 19th century.

None of this affects the interment of cremated remains: fortunately we have space for these for many years to come.

As with all church matters, views of villagers are welcomed.

Gerald South



OPEN

Mon - Thur: 11am - 11pm
 Fri - Sat: 11am - 11.30pm
 Sunday: 12pm - 11pm

LUNCH

Mon - Sat: 12pm - 2.30pm
 Sunday: 12pm - 5pm

WORKERS' POT

Mon - Fri: 5pm - 6.30pm

DINNER

Mon - Sat: 6.30pm - 9.30pm

**DOG
 FRIENDLY!**



THE ROYAL OAK TETBURY

Walkers, cyclists, explorers - welcome to The Royal Oak in Tetbury, an 18th century inn with a classic saloon bar, courtyard, gardens and stylish lodgings. Upcycled furnishings, cosy booths, a deco piano and a dining room in the rafters offer dining as well as private dining for gatherings and celebrations.

Cask Marque excellence is awarded for the great selection of guest ales including Stroud brewery. The seasonal menus showcase organic meat from local farms, sustainably sourced fish specials and with monthly Meat Free Monday events and a standalone vegan menu the choice is excellent for all.

With **six lovely en suite rooms** including the sensational Oak Lodge, and three dog-friendly rooms, The Royal Oak is a fun and relaxed getaway from which to browse the chic boutiques of Tetbury or explore the beautiful Cotswolds.

1 CIRENCESTER RD. TETBURY GL8 8EY
01666 500021 | THEROYALOAKTETBURY.CO.UK

Dates For Your Diary

Wednesday 5th June	Avening Cinema Club Showing The Favourite	Avening Memorial Hall	7.30pm
Saturday 8th & Sunday 9th June	Photographic Exhibition	Avening Church	
Sunday 9th June	Avening Church Fete	Avening Churchyard and School Grounds	
Saturday 15th June	FOAS Annual Bear Hunt	Avening	11.00 am
Tuesday 18th June	Community Café - Ascot 'Ladies Day' Celebration	Avening Social Club	9.00 - 11.30am
Thursday 20th June	Avening Parish Council Meeting	Avening Memorial Hall	7.30pm
Sunday 23rd June	Avening Open Gardens	Avening	tbc
Tuesday 25th June	Cherington Parish Council Meeting	Cherington Village Hall	6.00pm
Friday 5th July	FOAS School Summer Fete		tbc
Sunday 21st July	Cherington Show	Cherington	From 1.30pm

Church Floodlighting



The church looks beautiful at night when floodlit.

If you would like to have this in memory of a loved one, or to celebrate a special event, contact: **Paul Brown 01453 835 983.**

The cost is £10 for 2 hours

£20 OFF Your Next Service

Just hand this voucher to one of our friendly team members

**PLUS
£5**
donation to
Avening School
with your service
when you hand in
this voucher



- All Makes and models
- Dealer level diagnostics and servicing
- Free no obligation estimates
- local free pick-ups

for free, friendly, local advice give us a call

01453 832871

info@service-tech.org.uk
www.service-tech.org.uk



Inchbrook Trading Estate, (A46) Bath Road, Nailsworth, Stroud, GL5 5EY



London Road
Tetbury
GL8 8SG

TROUBLE HOUSE
CAFE | BAR | RESTAURANT

Come and visit us for Breakfast, Morning
Coffee, Lunch, Afternoon Tea, Dinner, and
Sunday Roasts

Plenty of parking and dogs welcome

Opening Hours

Tuesday - Saturday 9am – 5pm

Friday & Saturday evenings dinner from 7pm

Sunday Lunch 12 – 3pm

(Closed on Mondays)

For more information please call

01666 502206 or visit www.theroublehouse.co.uk

The Bell at Avening

a traditional British pub serving a great selection of real ales and food



OPENING TIMES:

MON - FRI: 5:30PM - CLOSE

SAT & SUN: ALL DAY FROM 12 NOON

LIVE MUSIC EVERY MONTH

FIRST SATURDAY OF EVERY MONTH IS
QUIZ NIGHT

Little
INDIA
at THE BELL

Little India @ The Bell, serving food from Tues-Sun 5pm-11pm

Call **01453 836453** for great food to eat in or takeaway

Visit our website for full menu

Call us on: **01453 836422** or e-mail us at info@agpubs.co.uk

www.thebellavening.co.uk

Find us on Facebook
by simply searching
"Bell at Avening"

