

# The Villager

A Magazine for Avening, Cherington  
and Nags Head

May 2019

*[editors@acvillager.co.uk](mailto:editors@acvillager.co.uk)*

# *Fieldfare Café* at Thistledown Farm



We're now open Wednesday to Sunday!

Our café is set in 75 acres of beautiful meadow and woodland overlooking Woodchester Park. We serve lunch from our wood-fired clay oven & charcoal BBQ Weds to Sun and brunch Sat & Sun. Fine teas, coffees & delicious homemade cakes served 9am to 4:30pm daily. Come up for an autumn walk and enjoy a hot drink with stunning views beside our woodburner!

You can join our mailing list for info on events such as vegan tapas, storytelling and foraging days. We stock delicious sourdough bread, Organic milk, our own preserves and more. Meats are free range and we use local and Organic produce wherever possible. Dogs are welcome on leads and we have baby changing and disabled facilities.

---

thistledown.org.uk 01453 860420 tinkley lane, nympsfield, GL103UH

# May 2019

Welcome back after a wonderful Easter holiday weekend. The weather was spectacular and has set us up nicely for what must surely be one of the happiest months of the year, May, when the days are longer, lighter and the blossom on the trees and bustling activity of the birds helps to make us feel optimistic about the glories of the summer to come.

As always, there are plenty of events to look forward to coming up in May. Readers are reminded about Dates for Your Diary, a regular item which appears at the end of each edition, and which hopefully is a useful reminder of details of upcoming events. Amongst other treats this month, the Big Brekkie is back again on Saturday 11th May and, on the 18th, Avening is going to enjoy a bonanza of a PARTY (see the poster further on in this copy of the Villager for details). The Community Café continues to prove a hugely popular meeting place for so many and the reports of the celebratory get-together last month make happy reading.

We do hope that you will enjoy reading this copy of the Villager. Please write with any ideas or comments you may have. We like to know that what we produce is what you want to read!

*The Villager Editors*

## The Villager Magazine

<b>Editors</b>	editors@acvillager.co.uk Jane Archer, Frances Conway and Derrick Pierce. 07812 137161 (Jane) 01453 832177 (Frances) 01453 835090 (Derrick)
<b>Advertising</b>	editors@acvillager.co.uk, Gwyneth Simpson 01453 836556
<b>Deliveries</b>	Cas Boddam-Whetham 01453 834834
<b>Deadline</b>	<b>18th of each month</b>

## Photographs in The Villager Magazine

Many thanks to **Tony Slater** for this photo of Avening from the west.

If you have a photo of Avening or Cherington which you would like to share with us, please feel free to send it to us. You never know, it might turn up on the front cover...!

**editors@acvillager.co.uk**



## Queen Matilda Country Inn



**Real Ale Real Food Real Fires**

Open Tuesday to Sunday

**Bed and Breakfast rooms now available**

**Quiz Night last Thursday every month**

**Thursday night two for one fish and chips!**

Star Lane, Avening, Glos, GL8 8NT Telephone 01453 350305

Website: [queenmatildatavern.co.uk](http://queenmatildatavern.co.uk)



# My Village Handyman

ALL HANDYMAN WORK UNDERTAKEN  
ALSO PAINTING | ROOFING | FENCING | PATIOS | RESTORATIONS

Contact us to arrange a visit or quote

Call: 07904058866 Email: [sales@myvillagehandymanstroud.com](mailto:sales@myvillagehandymanstroud.com)

Web: [www.myvillagehandymanstroud.com](http://www.myvillagehandymanstroud.com)

# Regular Activities in Avening and Cherington

Please let us know if we have forgotten any regular event or if there is something you would like to have included here.

Event	Day	Time	Where	Contact
Line Dancing	Monday	7.30 - 9.30pm	Social Club	Social Club 01453 833760
Mobile Post Office	Monday and Thursday	12.00 to 1.00pm	opposite 65, Sunground	J. Clutterbuck 01453 542754
Community Cafe	Tuesday	9.00 - 11.30am	Social Club	
Churchyard tidy up	Tuesday fortnightly	6.00 - 7.00pm	Holy Cross churchyard	Rev. Gerald 01453 834884
Cherington PC	Tuesday	6.00pm	Village Hall	Beverley 01453 832100
Bell Ringing	Tuesday	7.30 - 9.00pm	Church Bell Tower	Andrew 01453 835783
Line Dancing	Tuesday	8.00 - 10.00pm	Social Club	Social Club 01453 833760
Avening Youth Club	Every Tuesday in term time	6.00—7.30pm	Memorial Hall	Rev. Gerald 01453 834884
Over 60s Lunch Club	1st Wednesday each month	12.30pm	Social Club	Christine 01453 833246
Avening W.I.	2nd Thursday each month	7.30pm	Memorial Hall	Maisie 01453 834679
Avening PC	3rd Thursday each month	7.30pm	Memorial Hall	Caroline 01285 380041
Summer Skittles	Friday	8.00pm	Social club	Derrick Ind 01453 835752
Charity Quiz	1st Saturday each month	8.00pm	The Bell	
Avening Angels Choir	Sunday	4.00pm	Various	Derrick Pierce 01453 835090

# Contacts for the Villages

Avening and Cherington Priest	Revd. Gerald South	01453 834884
Avening & Cherington Churches Reader	Derrick Pierce	01453 835090
Avening & Cherington Cricket Club	Derrick Ind	01453 835752
Avening Angels	Derrick Pierce	01453 835090
Avening Art Group	Doreen Pierce	01453 835090
Avening Bell Tower Captain	Andrew Lelliott	01453 835783
Avening Church Churchwardens	Elizabeth Buchanan Elizabeth Fuller	01453 833016 07773 272933
Avening Church Flower Team	Doreen Pierce	01453 835090
Avening Church Organist	Vacant	
Avening Church PCC Treasurer	Ann Brick	01453 834311
Avening Film Club	Katy Upton	07806 614753.
Avening History Project	Jean Chatelain	01453 834713
Avening Memorial Hall		07583 073604
Avening Oil Coordinator	Frances Lindley	01453 835115
Avening Parish Council Clerk	Shani Baker	01453 860379
Avening Playgroup	Angie Heslop	01453 832695
Avening Primary School	Jane Rushton	01453 833191
Avening Silver Band	Jim Hill	01453 834438
Avening Social Club	Derrick Ind	01453 835752
Avening Youth Club	Revd. Gerald South The Door	01453 834884 01453 756745

Cherington Village Hall	Wendy Eldridge	01285 841327
Cherington Parish Council Clerk	Beverley Rymer	01453 832100
Cherington Church Churchwarden	John Bate-Williams	01666 503544
Cherington Church Flower Team	Elizabeth Workman	01285 841294
Cherington Church Organist	Elizabeth Workman	01285 841294
Cherington Church PCC Secretary	Elizabeth Workman	01285 841294
Cherington Church PCC Treasurer	Paul Cable	cabes50@yahoo.co.uk
Community Café	Jennie South	01453 834884
Cotswold District Councillor	Richard Morgan	
Friends of Avening School	Mel Pegler	01453 833191
Over 60s Lunch Club	Christine Howell	01453 833246
South Cotswold Community Wellbeing Agent		01452 528491
Stroud Hospital	Reception	0300 421 8080
Tetbury Hospital		01666 502336
Women's Institute	Gwyneth Simpson	01453 836556

### **VILLAGE & AREA WEB SITES**

**Avening Parish Council: [www.avening-pc.gov](http://www.avening-pc.gov)**

**Avening Church: [www.aveningchurch.info](http://www.aveningchurch.info)**

**Cherington Parish Council: [cheringtonpc.org.uk](http://cheringtonpc.org.uk).**

**Cherington Village: [www.cheringtonvillage.co.uk](http://www.cheringtonvillage.co.uk)**

**Cotswold District Council: [www.cotswold.gov.uk](http://www.cotswold.gov.uk)**

# Letter From Avening Parish Council Leader



Date for your diary – the Annual Show; Saturday 18<sup>th</sup> May 1.30 – 4.00pm – Free entry. See ad and posters for full details – please note there will be no parking available on the field other than very limited disabled parking, nor in Rectory Lane. Please advise friends to park in the Social Club or the bottom of the High Street. Don't forget that we are looking for Avening talent to perform, and show their products through the day.

Another date for your diary – Parish Council AGM; Wednesday 8<sup>th</sup> May 7.30pm in the hall. Come to meet your new council following the local elections.

At our request Highways have completed work on a number of drop kerbs around the village which will hopefully make access easier for pushchairs and the less abled. I am also pleased to confirm that we have instructed that work to improve the access path into the field from Sunground to proceed immediately. Tender requests are being issued for erection of the protective fence around the play equipment, so this work will start as soon as a contractor has been appointed. We have been able to prioritise these works ahead of schedule due to cost savings through the year - our finances are in good shape going into the new financial year.

We have started consultations on our revised plans for the wider improvements to the field, which were well received at the WI – details of the scheme are in the accompanying leaflet with this magazine. We will be available to discuss the plans at the Community Café soon, and also at the show on the 18<sup>th</sup> May. With the national focus on health, fitness and wellbeing, it was a shame that our more ambitious plans were not supported, but we hope to provide an informal recreation area that everyone can enjoy safely, with minimal ongoing costs.

At the Memorial Hall, the south side of the roof has already been repaired, and we have started the grant process to fund the replacement of the North side, plus replacement of the main floor. Huge thanks to the WI, and especially Shirley for putting on the recent quiz, and donating £210 towards the roof fund. With the sponsored tiles and WW1 DVDs we have a great start to meeting the repair costs.

I would like to give my personal thanks to Dominic and Eddie who are standing down as councillors – they are both experts in their respective fields, and I have relied on their advice and council over the last few years. They will both be missed.

*Tony Slater*





**We're going on a bear hunt...join us on an adventure around Avening to spot some amazing bears...we're not scared!**

Avening School and villagers will put on an amazing display of bears around the village for you and your family to find.

For more information visit [facebook.com/friendsofaveningschool](https://facebook.com/friendsofaveningschool) or email [aveningbearhunt@outlook.com](mailto:aveningbearhunt@outlook.com)

# Avening and Cherington Churches



## **Resurrection – an everyday event?**

Hardly, most would say. Yet in our villages and across the world these six weeks after Easter Day are a time to recall the convictions of many people that the crucified Jesus was still a real presence in their lives.

Of course, people who have been brutally murdered are not resuscitated so as to walk around as before – neither was Jesus. As the bible accounts make quite clear, those who became aware of his presence had very different experiences of him from the ones they had before the crucifixion: try reading some of the gospel stories of these appearances and see what you make of them. Whatever it was that happened at that time, the impact on people was clearly dramatic and life changing.

That was a single brief period of history, but .....

..... in the Christian perspective its significance is for all people and at all times. It speaks of the power and depth of love; it speaks of hope and encouragement when all seems lost; it reminds us that creation, flawed as it might sometimes seem to be, has a positive purpose and direction which is constantly being renewed and enlivened by its Creator; it emphasises that each of us is a precious individual immersed in the love of the God who knows the ups and downs of human life; it gives each of us fresh starts, at each and every stage of our lives, regardless of what has gone on before.

So, yes, resurrection is an everyday event that can underpin the meaning and activities of ordinary daily life.

## **Annual Church Meetings**

At the Avening and Cherington meetings churchwardens for the coming year were appointed: Elizabeth Buchanan and Liz Fuller at Avening and John Bate-Williams and Helen di Mauro at Cherington. We thank them for their willingness to undertake this leadership role.

Reports on various aspects of the life of our churches were given – including worship, pastoral care, finance, the care of the church buildings, safeguarding - followed by questions and discussions. Thanks go to all those who, in so many varied ways, enable our churches to flourish and look to the future.

If you would like more detail of these meetings please do contact me.

## **Mothering Sunday**

It was good to see many mothers at our services often with family and children. We were reminded of the story of Mary's concern when the young Jesus went missing, and her joy on finding him: motherhood can involve such a range of human emotions. We gave thanks for our mothers and those who have been

mothers to us. The children distributed posies to the mothers present and we enjoyed seeing the artwork produced by some of the Cherington children.

**From the registers**

3<sup>rd</sup> April Interment of ashes of John Clibborn (Avening)

*Gerald South, Parish Priest for Avening and Cherington  
01453 834884 gp.south@btopenworld.com*

**Church Services and Events**

<b>May</b>	<b>Holy Cross Avening</b>	<b>St Nicholas Cherington</b>
5 <sup>th</sup>	11.00 am Eucharist	9.30 am Eucharist
7 <sup>th</sup>	12.30 Praying the Parish	
8 <sup>th</sup>	7.00 pm PCC Meeting	
12 <sup>th</sup>	8.00 am Eucharist 5.30 pm Evening Prayer	10.30 am All Age Service
19 <sup>th</sup>	11.00 am Eucharist	9.30 am Eucharist
26 <sup>th</sup>	11.00 am Eucharist	9.30 pm Morning Prayer
<b>June 2</b>	11.00 am Eucharist with Baptism	9.30 am Eucharist
9 <sup>th</sup>	8.00 am Eucharist	10.30 am All Age Service

**The Parish Church is Yours**

both building and people.

As well as coming together to worship God it looks outward to the local community and the world: for example it collects for the Foodbank, it makes donations to good causes, it supports the local youth club and it has people who are trained to listen to the needs of others especially in difficult times.

If there is something your church could do for you, please let us know.

**Avening Churchyard**

The churchyard is a beautiful place, full of wild flowers, birdsong and ancient trees. It is kept tidy by a handful of volunteers who come when they can to pull ivy off the memorial stones, mow and rake the grass and weed the paths. Some tend their family plots, others enjoy diversity from week to week.

Beginning in the first week of May, we will meet every Tuesday evening from 6 til 7pm - refreshments are provided afterwards. Please come and join us! It is calming work with a sociable side and a great feeling of accomplishment.

For more information, contact **Elizabeth Buchanan** on **833016**



# Avening Village Party & Annual Parish meeting



**Saturday 18th May 2019 1.30-4.00pm**

**Avening Parish Council are hosting a fun afternoon for the village—**

**FREE OF CHARGE!**  
**Come and enjoy:**



**Avening's got talent**



**Bouncy Castle**



**Jousting Competition**

**At the Playing Field**



**Lambs & Ponies**



**Tractors and Police car**



**Prosecco/beer bar**



**Hog roast**



**Pride of Avening Awards**



**Bake-Off!**



**Inflatable Slide**



**Cinema club**



**Also learn more about what's going on in your village, and MUCH more.**

**At the playing field**

**Free entry!** Sponsored by Avening Parish Council





# Avening School

## Fun in the Fresh air!

Summer term is here already and the children have wasted no time getting stuck in to their new term topics with a glorious mixture of themes throughout the school. The Eagles (r/y1) and the Kestrels (y1/2) topics will see them venturing out into and learning about the garden with the Eagles looking at the story of the 'Very Hungry Caterpillar' and the Kestrels exploring nature in their topic 'Dens and Dandelions'. Meanwhile, further up the school in KS2 the Hawks class (y3/4) are experiencing all things French in their geography-based topic while the Owls (y5/6) are currently learning about biomes in their term topic 'We are the Future'.

With a new term always comes new clubs for the KS2 children to choose from with firm favourites 'art club' and 'forest school' returning once more, with the introduction of cricket club to complement the warmer temperatures and another new addition, orchestra club, and for both the the younger and older children Dazzle Dance club. So much from which to choose!

There are also plenty of sports fixtures in the diary for the term ahead, ranging from rounders to cricket to athletics. Our school sponsored walk is coming up this month with a shorter route for the reception children and a more challenging one for the rest of the school. All money raised will go towards funding essential resources for the school.

The y6 children have plenty to keep them busy over the next few weeks with their SATS tests in the middle of the May followed by their cycling proficiency sessions after the half term break and induction days at their chosen secondary schools during the last half of term, as we look forward to welcoming our new intake of reception children during our July 'Move Through' days.

Fledglings is back after the Easter break with plenty of outdoor fun each Friday 2 – 3pm. Please contact the school office for more information on Fledglings, our pre-school Forest School session for parents and children.

FOAS are busy planning their annual Avening Bear Hunt which will take place on Saturday 15<sup>th</sup> June between 11am – 3pm. To reserve a bear or to find out more visit [facebook.com/friendsofaveningschool](https://facebook.com/friendsofaveningschool) or email [aveningbearhunt@outlook.com](mailto:aveningbearhunt@outlook.com).

*For further information about this busy place of learning please see our school website: [www.avening.gloucs.sch.uk](http://www.avening.gloucs.sch.uk)*

**Alex Adcock**

## Avening W.I.

Thank you to everyone who came and supported our recent Fun Quiz which raised £200 for Longfields in memory of Eileen Ind. Our own WI quiz team were also successful in the first round of the Gloucester Federation competition at Chedworth and will now compete in the final round later this year, so well done to Gill A, Gill T, Penny and Gwyneth.

An open invitation is also extended to anyone who would like to join us on our summer outing on Wednesday 19<sup>th</sup> June. This year we will be visiting the wonderful Sir Harold Hillier Garden near Romsey. Famous for its seasonal planting displays, the summer herbaceous borders are particularly impressive. There is a Visitor Centre, Restaurant and Tea Rooms on site. For more information or to book a place, please telephone Sue Osborne on 839327.



In addition to our monthly meeting in April, members have attended the GFWI Annual Conference in Gloucester, enjoyed a walk in the beautiful fritillary meadows in Cricklade, taken a trip to the theatre in Oxford to see the highly acclaimed production of Calendar Girls the musical and played our first skittles match of the season in the county competition, against Upton St

Leonards WI.

Our April speaker, Rose Hewlett, outlined the many resources available to research house history and gave some interesting examples of the research that she has undertaken for various clients.

Our speaker for May will be Clare Walsh with an introduction to Indian Block Printing. Clare is a local designer, teacher, maker and textile enthusiast whose trips to India and growing collection of old printing blocks have resulted in some beautiful designs. Clare will give a demonstration of the technique and show some examples of traditional and contemporary designs. Visitors and new members are welcome to join us for the evening on Thursday 9<sup>th</sup> May, 7.30 pm at the Memorial Hall.

***Helen Haiselden***

THE MARK TOWNSEND CHARITABLE  
TRUST

# AVENING OPEN GARDENS

SUNDAY 23RD JUNE 2019

11AM TO 5PM

ALL PROFITS MADE WILL BE DONATED TO  
GROUPS WITHIN AVENING

FOR MORE INFORMATION OR TO SIGN UP PLEASE VISIT  
[WWW.THEMARKTOWNSENDCHARITABLETRUST.COM](http://WWW.THEMARKTOWNSENDCHARITABLETRUST.COM)

ADULTS-£5

Children (under 12) - Free

Concessions - £3

Children's treasure hunt - £1



# Puzzle Corner

5	2				4			7
	3	9		8				
4	8	7	6					
7			2		6		4	1
9		1				3		2
8	4		3		1			
					2	7	1	8
				1		4	9	
6			9				3	5

Answers on page 35

## Sudoku

Fill in the blank squares so that each row, each column and each 3-by-3 block contain all of the digits 1 - 9.

If you use logic you can solve the puzzle without guesswork.

© 2013 KrazyDad.com

1		2		3		4		5		6		7
8				9								
10						11						
	12			13			14			15		
16						17						18
19		20						21				
22										23		
24						25						

http://www.puzzlechoice.com

## Across

- Meteorological conditions (7)
- Accolade (5)
- Conclusion (3)
- Submersible warship (9)
- Task (5)
- Alphabetic character (7)
- Guide (5)
- Square root of forty-nine (5)
- Tableland (7)
- Hoard (5)
- Disregarded (9)
- Small vegetable (3)
- Happening (5)
- Sincere (7)

## Down

- Twist (6)
- Gruelling (7)
- Overly eager speed (5)
- Burrowing mammal (6)
- Greed (7)
- Exculpation (5)
- Resides (6)
- Component (7)
- Fugitive (7)
- Parazoan (6)
- Chelonian reptile (6)
- Leave (6)
- Slant (5)
- Aromatic wood (5)



# AVENING PHOTOGRAPHY EXHIBITION 2019

8TH-9TH JUNE IN AVENING CHURCH  
JUNIOR/SCHOOL EXHIBITION CONCURRENT



FOR INFORMATION AND ENTRY FORMS:

[BUCHANAN.PG@GMAIL.COM](mailto:BUCHANAN.PG@GMAIL.COM)

PICTURE HANGING 6TH-7TH JUNE.

THEMES, FOR WHICH PRIZES WILL BE AWARDED:

“ON OUR DOORSTEP”, “FURTHER AFIELD”,  
“MY FAMILY AND OTHER ANIMALS”, “WATER”  
“CAPTURING THE CHARACTER”, “WILDLIFE”



# Avening Playgroup

The children were very lucky and excited to receive a special visit from three orphaned lambs at the end of March. They were given the opportunity to stroke and feed the lambs with a bottle. Once the lambs had drunk enough they followed the children around the playground, hopping and skipping. The children were so happy to see them.



Before the Easter holidays, the children took part in many activities to develop cutting and mark-making skills. They cut along lines and rolled out playdough sausages which they then cut up. They traced over different lines, concentrated on drawing between two lines and made patterns in damp sand with sticks.

We also talked about springtime and looked closely at the plants and bushes growing in the playground. The children also used the magnifying glasses to look for bugs. They found ladybirds, caterpillars, spiders and ants.



During our final week we thought about Easter and the children made Easter cards, masks, toilet roll chicks and we had a little Easter egg hunt on the last day. This was the second Easter egg hunt most of the children had been on as the playgroup committee, staff and parent volunteers put on an Easter egg hunt which was held in the primary school garden. Children of all ages came to find 27 card Easter eggs, each with a letter on them. Then they had to unscramble the letters to find the opening line of a well-known nursery rhyme and once this was done they received a chocolate rabbit! We also served tea, coffee and cakes in the Memorial Hall. Everyone had a lovely time and the

weather was just perfect. A big thank you to everyone who helped on the day and to all those who donated cakes. We hope to do the same again next year.

We are hoping to restart our Baby and Toddler Group very soon. It will take place on Mondays between 1.00 and 3.00 pm at the playgroup during term time. It will be open for parents and their pre-school children between the ages of 0 and 5 years of age, so watch this space!

For more information about our lovely playgroup, please call us on 01453 832695 or email [aveningplaygroup@gmail.com](mailto:aveningplaygroup@gmail.com). We are open week day mornings during term

*Angie Heslop*



## OSTEOPATHY & WELLBEING

### Symptoms suitable for Osteopathic treatment:

Spinal pain (back & neck), Sciatica, Limb pain (arms & legs), Frozen shoulder, Sporting injuries, Headaches & Migraines, Stress related conditions, Antenatal care for pregnancy related problems, Neonatal care for unsettled babies.

#### Also available at The White Practice:

- . Medical herbalism & allergy therapy
- . Cognitive behavioural therapy (CBT)
- . Acupuncture

#### ONLINE BOOKING AVAILABLE

[www.thewhitepractice.co.uk](http://www.thewhitepractice.co.uk)

14 Market Street, Nailsworth, Glos, GL6 0BX  
**01453 832515**



## NAILSWORTH

George Street

Tel: **01453 705560**

**NOW OPEN**

Including Saturday 2-4pm



## TETBURY

23 Church Street

Tel: **01666**

**503531**



[georgevetgroup.co.uk](http://georgevetgroup.co.uk)

# Walk for Longfield



Walk, Remember, Celebrate

Friday 14th June at 6.30pm

Longfield, Burleigh Lane, Minchinhampton

Sign up at: [www.longfield.org.uk](http://www.longfield.org.uk)

Or call: 01453 886868



***This year's Walk for Longfield will be on Friday 14<sup>th</sup> June, at 6.30pm with 5km or 10km walks on Minchinhampton Common.***

***All money raised will support Longfield's amazing care for people in Gloucestershire with life-limiting illness.***

***Entry fees £12.00 for an adult and £7.00 per child (4 -16, 3 and under go free). Family ticket £28.00, group booking for 4 adults £38.00.***

***Register at [www.longfield.org.uk](http://www.longfield.org.uk). For more information call 01453 886868.***

## TETBURY ART SOCIETY SPRING EXHIBITION

Held in the MARKET HOUSE, TETBURY

Saturday 5<sup>th</sup> until Monday 7<sup>th</sup> MAY

10am - 5pm Free Entry

Exhibition of member's art in various media and subjects, come along and enjoy the variety of the exhibition. Most pictures will be for sale, there is also a chance to buy unframed pictures as well.

[www.tetburyartsociety.org.uk](http://www.tetburyartsociety.org.uk)

# PETER SAVAGE

**ALL FENCING & GATES SUPPLIED & FITTED  
GROUNDWORKS AND LANDSCAPING UNDERTAKEN  
SEASONED FIREWOOD – LOGS & KINDLING**

**Tel: 01453 833239  
or 07785 788335**



**FOREVER YOUNG**

**OVER 60s LUNCH**

1<sup>ST</sup> Wednesday of each month 12.30 start

**Evening Social Club**

Phone Chris Howell on 01453 833246 to book your lunch

Main course, sweet and tea/coffee all for £6.00

A big thankyou to all who have supported in the past

## **Do you have a mole problem?**

With over 30 years experience in traditional mole control I can effectively, discreetly and humanely remove the culprit(s)! No gas, chemicals or poisons used and completely safe to children and pets.

**No Mole – No Fee!**

**07766 132934 (Days) 01666 890344 (Evenings)**

**[www.gbstateservices.com](http://www.gbstateservices.com)**

Member of the British Traditional Molecatchers Register. Member of the Guild of British Molecatchers  
BPCA/RSPH level 2 certificate in pest control. Fully insured and references available

**Call now for a free, no obligation site survey and quote.**

# Cherington Show

It is that time of year again when our village is preparing for the annual Show, this year to be held on 21st July 2019. This started my sister Marlene and I reminiscing about how long we have been involved in some way with the show.

The show started way back in 1945 when Marlene was 6 and I was 2 years old. From a very early age, every year our mother made carnival costumes for us from scratch for the Fancy Dress competition and parade which always started off the show. Adults entered as well and we congregated at Coxes Farm together with Avening Band and paraded down the village and into what was Cherington Park where the main event took place. Marlene recalls one year when she couldn't take part in the carnival because she had measles and sat on the doorstep of our house which was part of what is now Westside House and watched everything go by. I was about 5 years old when we'd had a particularly hot summer and I was extremely tanned and so my mother put me in the fancy dress that year as a little hula girl and made me a skirt, a bra type top and something for my feet, all out of raffia.

Our parents were both keen competitors in the show, our father with his vegetables and flowers and Mum in the Domestic and Flower Arranging classes and so once Marlene and I were old enough we entered the children's classes as well. Most of the families in the village joined in in the same way as our family and reputations were built. Uncle Bob Vines was the man to beat for Sweet Peas, our father was a dab hand at Pom Pom Dahlias and mum shone with her cooking.

We moved to Yewtree Cottages at Evergreen when Marlene was about 11 and I was 7 but that did not stop our parents from being involved in the Show. My father simply piled his wheelbarrow high with his vegetables and his very large tray for his collection, my mother had a bicycle with a basket on the front and a seat on the back and loaded up with her entries, and we walked to the village. We had no car then. Marlene and I would walk with them in our fancy dress. She recalls one year when she was a doll in a box, such box being as tall as she was, having three sides and an open front and which she had to support with her hands all the way from Yewtree to the village. Another time she was Departed Spirits and was a ghost-like creature covered with a sheet and having many empty spirit bottles hanging on her person.

The night before the Show we never dared to misbehave! Tempers got a little frayed as our father would dig up half the garden to find 4 potatoes of a like size and quality! You could not see our rear yard for vegetables as he made his selections. They both won many cups during their time of competing.

The Fancy Dress Competition faded out but Marlene and I have continued over the years to support the Show both as competitors and running a stall and helping with the clerical work for the judging. Cherington Show is special. Very special. It has not changed in many ways from when it first started. We're both getting older but still get a kick out of being a part of Cherington Village Show.

Wendy Eldridge

### STOP PRESS!

After a break of many years we have decided to have a children's fancy dress competition again at this years Show.

No particular theme, just the most creative costume.

Prizes for the best!

## *Nailsworth Domestic Appliance Repairs*

*A reliable, fast & friendly service*

*Washing Machines,*

*Dishwashers,*

*Tumble Dryers,*

*Fridge-Freezers,*

*Electric Cookers . . .*

*No Call - out Charge*

*01453 ~ 833310*



# AVENING CHURCH FETE & FUN DOG SHOW

Sunday 9th June at 2.00pm.

Famous Duck races • Raffle  
Bottle tombola • Delicious Cakes  
Teas • The Elegant Sausage  
Childrens Area • Bric-A-Brac  
& Much more



With a photographic  
exhibition and competition  
in the church

For details of stalls and offers of help contact

Stephanie email  
[stephanie2432@hotmail.co.uk](mailto:stephanie2432@hotmail.co.uk)

For the photographic  
competition details from  
George Buchanan email  
[buchanan.pg@gmail.com](mailto:buchanan.pg@gmail.com)





## **OPEN STUDIO - CAROLINE PAYNE**

THE OLD BUTCHERS ARMS, POINT ROAD, AVENING  
WEEKENDS: 11<sup>TH</sup> – 12<sup>TH</sup> & 18<sup>TH</sup> – 19<sup>TH</sup> MAY, 12 - 6 pm.

EXHIBITION OF PAINTINGS AND OPPORTUNITY TO BUY DIRECT FROM THE ARTIST



### **STROUD VALLEY ARTS OPEN STUDIO**

I have lived in the village for over 20 years and as far as I know no one else has taken part in the Stroud Valleys Open Studios - so it's a FIRST for Avening! I studied Fine Art Painting at Cheltenham Art College as a mature student and graduated in 2004. My work is figurative, primarily landscapes and still life. I work mainly in oils and watercolours. This is an exhibition of my work and an opportunity to see my studio in my home at the Old Butchers Arms in Point Road. Do pop in, I look forward to meeting you.

*Caroline Payne, BA Hons. Fine Art*

**Remember to bring your four legged friends  
to the Village Fete Sunday 9<sup>th</sup> June.**

**Agility course from 2pm and the Fun Dog  
Show from 2.40pm.**



**Events include:**

***The friendliest puppy***  
***Best rescued dog***

***Best veteran dog***  
***Best child handler***

# Avening Community Café

## A month of celebrations: thanking our funders, Easter treats and a bacon sandwich 'first'

'It was a party from first to last.' Elizabeth Buchanan may have been talking about the Easter Treat special, but her words could describe the whole of April at the Cafe. We notched up a Big Café Thank You for our funders, an Early Bird bacon sandwich 'first', and opened our doors to many younger customers during the school holidays.



The Big Café Thank You was our chance to show representatives from our funders and supporters what we've achieved in just six months. Over 70 people signed the thank you poster presented to Avening Parish Council, Tetbury Lions, South Cotswold Rotary Club, Avening WI, Stuart Singers Gloucester County Council,

Tesco, Morrisons, Avening Church and Avening Social Club. More importantly, they got to see (and hear) how popular the café is, get a sense of the range of activities we host, and see what it contributes to the village.

We've been busy behind the scenes too, taking our valiant team leaders to the delightful Cornflower Café in Tetbury hosted by owner and Avening resident Louise East. We wanted to learn from Louise's impeccable customer focus and delicious home baking to get the inside track on what's popular (and what's not!). The result? Well, the introduction of white hot chocolate (with marshmallows of course) at Easter for starters.

In May we're getting ready to go green. We think it's important that the café plays its part in protecting, enhancing and celebrating the local environment and that we push ourselves to be responsible and sustainable. We'd like to hear from anyone who has ideas about what the café (and its customers) can do to make our café on June 4<sup>th</sup> our greenest yet. We're also looking out for our local environmental heroes – people who live and/or work in Avening, Cherington or Nag's Head who make a significant contribution to protecting the environment – so do get in touch if you'd like to nominate your local hero.

That's not all. To mark National Walking Month, we're planning a short walk and a long lunch at The Weighbridge on May 14. We'll be setting out after the café at 12 – you set the pace and we'll book the tables! Please let us know if you'd like to join us, even if you've never been to the café before! Atlanta Rayner



'Thank You' poster

is running what we hope will be the first of many Writing for Fun sessions at the café on May 28. "Fun writing unlocks the potential for a deeper understanding of ourselves, widens perspectives, increases confidence and positivity and reduces stress," says Atlanta. The Book Swap and Knit and Natter are now regular monthly features so we hope there's something for everyone!

Whether you are a regular customer or a first-timer, we thought this was worth sharing. So in this month's Villager there is a 'two-for-one' offer for readers – come along, take a look, make new friends, renew old acquaintances, try something new. And if you are a regular customer, it's our way of saying a Big Café Thank You to you too.

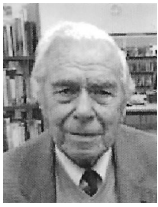
**Follow us on Facebook (Avening Community Café) to keep up with everything going on at the Café – and don't forget we serve great coffee and home-baked cakes too!**



### Ready, Steady, Grow!

Following the successful 'seed swap' earlier in the year it's now time to share any surplus seedlings you've grown. If you have more plants than you need, or are thinning out anything from your garden, please bring them to the Avening Community cafe on Tuesday 4th June where we are sure they'll find a welcome new home.

We are hoping that come the harvesting season any surplus fruit and veg can be shared at the cafe too!



# Riley Reminisces

## The Day the Church Fell Down!

Recently, I attended the funeral of a well-known and popular villager. Fellow-mourners filled the Church well beyond its capacity to pay their respects.

A chance remark from me to a fellow mourner: "It's a pity the galleries (balconies) were ever removed." The usual questions followed: "Where? Why? When?" I had



*Inside the church before the destruction of the 19th century gallery but after restoration of the chancel, possibly 1888.*

only scant knowledge of the removal but delving into local history, I found that the galleries were removed following restoration work carried out in 1890 by R.H. Carpenter and B. Ingelow, Builders.

Storm damage sustained during 1902 required further restoration, but this work to strengthen the North Wall and supporting Pillar resulted in damage to the East Arch of the tower and the collapse of the main supporting Pillar in the North Wall. This in turn destroyed a large part of the Nave and required a hurried shoring up of

the east Arch of the Tower. Repairs incorporating much of the original fabric were carried out under the supervision of John Micklethwaite in 1904.

A random check of a number of villagers found they had no knowledge of the disaster so it was considered that an account would be of interest. One can find little evidence of the rebuild except new stone work in the East Arch of the Tower and a number of what I am told are Anglo Romano remains found on excavation work are built into the wall in the vicinity of the Font. The carving on the wall near the entrance is believed to be from the Norman Font and depicted three disciples.

The photographs I had copied in earlier days bear out the extent of the damage.

**The Villager Editors would like to take this opportunity to wish our proof-reader Riley Vincent a very happy 96th birthday, which he celebrated on April 25th!**



*After the wall collapsed, 10 December 1902*



*Inside the church after the wall collapsed, 10 December 1902*



**Manufacturers of purpose made  
joinery of all types**

**Tel: 01453 885075**

**Email [gkjoinery@googlemail.com](mailto:gkjoinery@googlemail.com) [www.gkjoinery.com](http://www.gkjoinery.com)**



## **Fred Stevens Funeral Directors**

We give immediate attention – 24 hours

Traditional and contemporary styled  
funerals arranged

Individual, flexible approach

Well established, family-owned company with highly  
experienced staff

Newmarket Road, Nailsworth, Gloucestershire GL6 0DQ

telephone 01453 832188

[email@fredstevens.co.uk](mailto:email@fredstevens.co.uk) [www.fredstevens.co.uk](http://www.fredstevens.co.uk)



## **YOUR Community ALERTS Gloucestershire**



**Sign up today for local news and alerts in  
your community.**



By registering today you will receive news  
and appeals, local crime information and  
crime prevention advice - directly to you.

**Registering with us is completely  
free.**



It will also help your local policing  
teams better police your  
neighbourhood.



**[www.yourcommunityalerts.co.uk](http://www.yourcommunityalerts.co.uk)**



**TOAD HALL**  
TRULL FARM  
TETBURY  
GL8 8SQ



Your own private room for lunches, dinners, drinks, receptions, childrens parties, business meetings, exhibitions, film nights. Large screen and internet.

Kitchen plus smaller room available. Outside or "inhouse" catering. A marquee could be added if required.

For Bookings and prices please contact :  
Fi Mitchell  
fimitchell06@btinternet.com  
01285 841229 07885 094393

## **COACHING**

Are you facing challenges? Are you stuck, repeating the same old behaviour patterns? Would you like to see huge changes in your life either at work or at home?

Be the best version of you – gain clarity, take action and see positive results.

**Contact: Emma Clout MSc - Coaching  
Psychologist**

emsclout@gmail.com / 07555 677955



# Avening Youth Club



We are very sorry to say goodbye to our lovely leader, Becky, who is moving on to a new job. We're glad to welcome Isaac, who has been working alongside Becky.

## May is Community & History Month

**7<sup>th</sup> May – Historical Sports:** Going back in time, try out some historical games and sports.

**14<sup>th</sup> May – Wartime Cooking:** Looking back at the world wars, make your own traditional wartime food.

**21<sup>st</sup> May - I'm Only Human Night – Part 2:** The last 'I'm Only Human' Night. was so popular that we have decided to bring it back. Turning traditional board games into human-sized versions!

**28<sup>th</sup> May – NO YOUTH CLUB – Half Term.**

### *Check out the Facebook Page*

Youth Club is for anyone aged 8 to 14, from Avening, Nags Head, or Cherington. We meet every Tuesday in term time from 6 to 7.30 pm at the Memorial Hall. **Once you're 13 we'll ask you to be a Young Leader and help out (don't worry, we'll give you training).**

Cost is just £1 a time to include a healthy snack. Just come along and see what's what if you haven't been before.

**For parents or carers:** The Youth Club is run by The Door (find their website at [www.thedoor.org.uk](http://www.thedoor.org.uk)). They provide qualified and experienced Youth Workers. You just need to leave an emergency contact number when you drop your young person off. If they come on their own, we need them to give us a number to contact.

**Want more information?** Contact Rev Gerald South on 834884 or John at The Door on 01453 756745.



Talk about Guide Dogs for Blind People

## Small Ad

Upright Hoover vacuum cleaner in perfect working order.

**FREE**

Ring Jean **834148** for details





## S Woodman Garden Services



General Gardening  
Grass Cutting ~ Hedge Cutting  
Tree Cutting ~ Fruit Tree Pruning  
General Ground Clearance  
Good Rates / O.A.P Discount

Please Call: Home: 01453 834744 Mobile: 07814206803

## PETER JOY

Sales & Lettings

### Sales

01453 833747 [nailsworth@peterjoy.co.uk](mailto:nailsworth@peterjoy.co.uk)

### Lettings and Management

01453 833847 [lettings@peterjoy.co.uk](mailto:lettings@peterjoy.co.uk)

PROUD SUPPORTERS OF AVENING PLAYGROUP

## Carpet and Upholstery Cleaning Specialists

- Ultra fast drying times
- Environmentally friendly
- Removes stains
- High temp – sterilises carpet
- Improves air quality
- Removes dust mites
- Fully insured

### Barden Clean

**CALL NOW**

Michael Denley

01453 752893  
07541 002 891

[www.bardenclean.co.uk](http://www.bardenclean.co.uk)



## **Avening and Cherington**

### **Christian Aid Big Brekkie**

**Saturday 11<sup>th</sup> May at Avening Memorial Hall**

**Breakfast served between 8.30 and 10.30am**

### **Want to change the world over breakfast?**

Then come and tuck in at our Big Brekkie!

Enjoy a delicious morning meal together, raising money to fight poverty and injustice worldwide

**Adults £5 Children (under 12) £3**

**No tickets but to help with catering please book your place by contacting: Cas on 07900472999 or [casbw@btinternet.com](mailto:casbw@btinternet.com) or Paul on 07969906436**

Following the success of last year, we have another Big Village Brekkie- one of hundreds taking place across the country. With your support we want to continue to raise a goodly sum for Christian Aid while offering you a delicious breakfast.

**Do come, give generously - Save the date AND Save a life with a bacon butty!**

For over 70 years, Christian Aid has been standing with the poorest of our neighbours working in 37 countries, with people of all faiths and none, to stand up for dignity, equality and justice. To create a world where everyone can live a full life, free from poverty. Check out the web site [www.christianaid.org.uk](http://www.christianaid.org.uk) to find out more about the many projects they are involved in. One that has now disappeared from the headlines but where the needs are still great is the help needed by the three million people affected by Cyclone Idai in SE Africa.

Christian Aid stands with the most vulnerable and excluded people of the world – both in times of crisis and for the longer term. It gives people survival essentials when they are without shelter or refuge and helps them find the strength and resources they need to flourish and protect themselves from shocks and disasters.

Christian Aid supports people to stand up for their rights and to build stable, secure lives. They campaign to ensure a more equal division of power in the world, promoting the rights and voices of women and girls – and anyone discriminated against because of who they are.

They work to encourage our political leaders to tackle climate change and tax dodging – which hit the poorest the hardest.

Together we have the power to transform lives.

***Jennie South***

# Puzzle Corner Answers

5	2	6	1	3	4	9	8	7
1	3	9	7	8	5	6	2	4
4	8	7	6	2	9	1	5	3
7	5	3	2	9	6	8	4	1
9	6	1	4	5	8	3	7	2
8	4	2	3	7	1	5	6	9
3	9	4	5	6	2	7	1	8
2	7	5	8	1	3	4	9	6
6	1	8	9	4	7	2	3	5

W	E	A	T	H	E	R		A	W	A	R	D
R		R		A		A		V		L		W
E	N	D		S	U	B	M	A	R	I	N	E
N		U		T		B		R		B		L
C	H	O	R	E		I	N	I	T	I	A	L
H		U				T		C				S
	U	S	H	E	R		S	E	V	E	N	
S				L		T				S		D
P	L	A	T	E	A	U		C	A	C	H	E
O		N		M		R		E		A		P
N	E	G	L	E	C	T	E	D		P	E	A
G		L		N		L		A		E		R
E	V	E	N	T		E	A	R	N	E	S	T

$$x^2 + y^2 = r^2$$

Are you taking  
**Maths A-level or GCSE**  
 this summer?

$$\sin^2 \theta = 0.5$$

Would you like some help with your revision from an experienced Maths teacher?

If so, contact Gerald South

01453 834884 or [gp.south@btopenworld.com](mailto:gp.south@btopenworld.com)

Donations to the appeal by the Bishop of Gloucester in aid of several initiatives including Allsorts, a Gloucestershire charity supporting over 300 families who have a disabled child, and education in Western Tanganyika.

dental  
practice

townes  
townes  
associates

*Family Dentistry You Can Rely On*



[www.familysmile.co.uk](http://www.familysmile.co.uk)

Satisfaction rating:  
more than 99%

100% of patients  
asked would  
recommend  
us to family  
& friends

Quote 'Villager' for a 50% discount on a full New Patient Examination with x-rays for just £39.50. Telephone us on **01453 827474**

**Traditional  
Acupuncture**

**Holistic Massage**

With Paloma Sparrow

At the White Practice,  
Market Street,  
Nailsworth

& St Luke's Therapy  
Centre, Cainscross  
Road, Stroud

**Dove Therapies**



**Supporting health  
through life**

Free 20 minute  
consultation - in  
person or by phone

For more  
information or to  
book an  
appointment

07528 374 002

hello@dovetherapies.co.uk  
Www.dovetherapies.co.uk

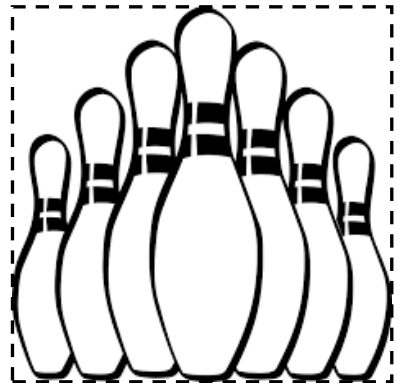
**AVENING SOCIAL CLUB**

**Five a side Summer Skittles**

Would you like a friendly game of skittles this  
summer on Thursday or Friday evenings commencing  
in May?

Then you are warmly invited to enter a team or join  
with any other team.

For further details or to enter a team contact the club  
on 01453 833760 or ring Derrick on 01453 835752 or  
mobile 07909562270



**A Bite to Eat?**



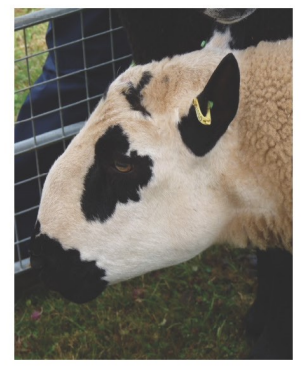
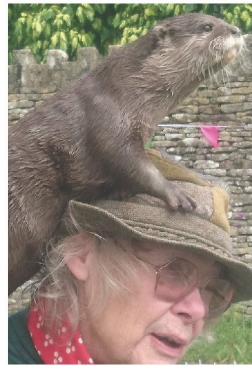
**Arranging a Group Lunch, Christening other social  
event ?**

Avening WI 'Bite to Eat' scheme may be able to assist  
with your catering needs. We can provide and serve a  
selection of freshly prepared sandwiches, scones, cakes etc; a fork or  
finger buffet; or a two course meal.

**For prices and any further details phone Liz Knowles 01453  
833803 or lizknowles@hotmail.co.uk**

See our new website  
for competition and  
day schedules:  
[cheringtonshow.com](http://cheringtonshow.com)

Follow us on Facebook:  
Cheringtonshow



## The Cherington Show Sunday 21st July 2019

Save the date for our village show  
from 1.30pm!

Crafts, horticulture, rare breeds, Rudi the TV Otter, BBQ, Pimms, Kid's Zone, fab raffle prizes, tea tent, morris dancers, cakes, plant stall, vintage tractors, designer clothes, art show, Cherington produce stall, jams, books, and MUCH more! **GL8 8SN. 75 years young!**

[cheringtonshow@gmail.com](mailto:cheringtonshow@gmail.com) The village will be closed to through traffic. £2 per car entry



### **GREAT AVENING BAKE OFF**

**At The Avening Show**

**Saturday 18th May 2019, 1.30 TO 4.00pm.**

#### **ADULT COMPETITION**

Quiche Lorraine,  
Rich fruit cake (in a 6inch tin NOT decorated)  
Loaf of bread (in a 1lb loaf tin)



#### **CHILDRENS COMPETITION**

6 Cheese scones (on a disposable plate)

Entries to be handed in to the marquee on the playing field by 11.00 am (in the Village Hall if wet)





# Avening Cinema Club

**Avening Memorial Hall - Admission £5**

**A STAR IS BORN**

**WEDNESDAY 1ST MAY AT 7.30pm**

A musician helps a young singer find fame as age and alcoholism send his own career into a downward spiral .

Starring Lady Gaga and Bradley Cooper  
Director Bradley Cooper



Cinema-goers are encouraged to buy their drinks from the local pub both before the film and during the interval.

The film club runs on the first Wednesday of every month, at 7.30pm in the Memorial Hall. Please do check our Facebook page or contact Katy Upton for more information, and for the chance to vote on films.

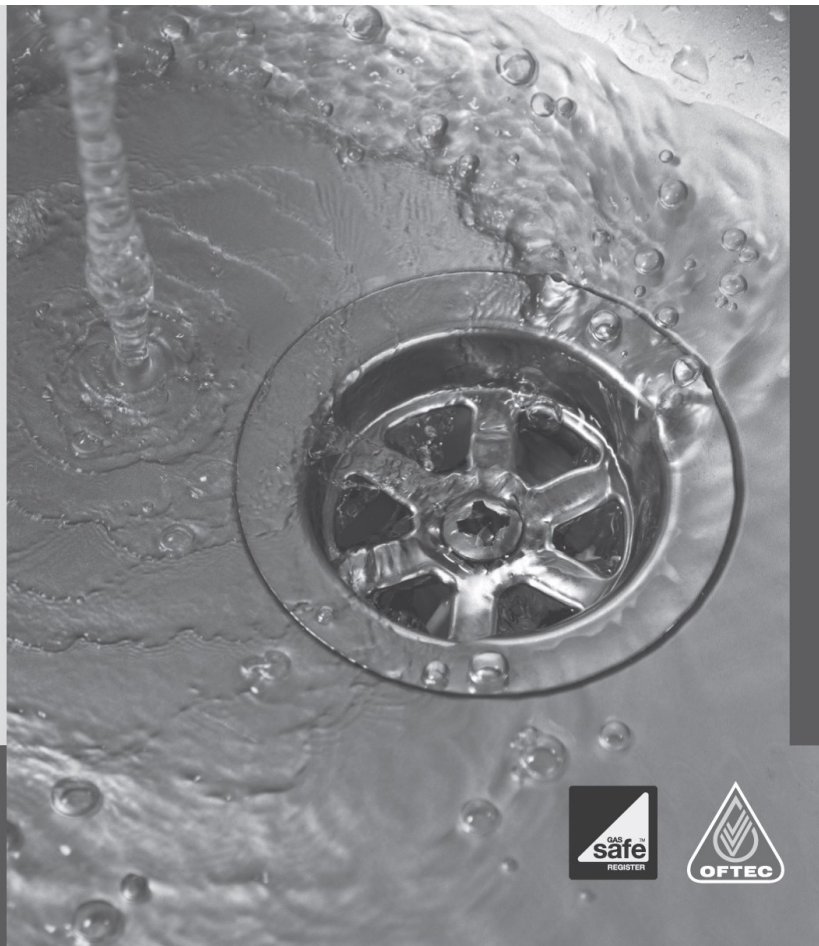
Phone: 07806 614753. Email: [katywingrove@hotmail.co.uk](mailto:katywingrove@hotmail.co.uk)

The film club is a not for profit community event. Any profit made after screening/licence costs will be donated to local charities.



**Plumbing  
& Heating**  
(Cotswold) Ltd

- Oftec and Gas safe registered
- Boiler replacements
- New build and renovations
- Heating updates and alterations
- Underfloor heating
- Bathrooms
- Water softeners
- Over 35 yrs experience
- Tetbury based



Clive Alley t: 07584414624  
Scott Wilkins t: 07717750247  
e: [scott@awplumb.co.uk](mailto:scott@awplumb.co.uk)  
[www.awplumb.co.uk](http://www.awplumb.co.uk)



# Dying without a Will. Now that's a real tragedy.

No-one likes the thought of dying, so it's hardly surprising that almost 3 out of 5 UK adults don't have a valid Will (*source: www.unbiased.co.uk 2010*). Yet having one is one of the most important arrangements you can make during your lifetime.

My name is David Martin. I live in Nailsworth and I'm the local consultant for *Steele Rose & Co* - one of the UK's Premier Professional Home Visit Will Writers. After 22 years serving my country in the RAF, I have spent the last 28 years of my life professionally advising my clients on all personal financial matters and specialising in Wills.

Writing a Will is easier and cheaper than you think. It also ensures that your wishes are carried out simply and efficiently - causing the minimum of anguish for those you leave behind. If you would like to discuss your Will arrangements, redraft an existing Will, Lasting Powers of Attorney, or other associated legal services, at a mutually convenient time in the comfort and privacy of your own home, please contact me:



*David Martin*

**David Martin, local consultant,  
Steele Rose & Co  
(Nailsworth & surrounding areas)  
01453 836699 (M) 07973 405997  
Email: [dcmartin@hotmail.co.uk](mailto:dcmartin@hotmail.co.uk)  
[www.steelerose.co.uk](http://www.steelerose.co.uk)  
Members of the Society of Will Writers**



**BELL  
HOUSE**  
Dental Practice

- **Dentistry for all the Family**
- **Private and Denplan**
- **Cosmetic treatment**
- **Tooth whitening**
- **Hygienist**

 **Denplan**  
At the heart of dental care



Robert W. Carter B.D.S.  
7 New Church Street . Tetbury . Gloucestershire . GL8 8DS  
Telephone (01666) 503788

0100315

# Locally-Based Charities

This table gives information about charities which are based in and around Avening and Cherington. Periodically, we will give a more detailed outline of what each organisation does.

Please let us know if any information is incorrect and also if you know of any other charities which should be included - we know there are plenty for this list.

<b>Charity</b>	<b>Purpose</b>	<b>Further Information</b>
Avening Church of England Educational Fund	To support and promote the education of those under the age of 25 resident in the parish of Avening.	Gerald South 01453 834884
Avening Playgroup	To provide funded early education for two-, three- and four-year -old children.	01453 832695 Angie Heslop; avening-playgroup@gmail.com.
Friends of Avening School (FOAS )	FOAS raises money to help with various projects and activities at the school.	01453 833191
Friends of Little Stars	Fundraising and support for Little Stars School for underprivileged children in Varanasi, India	Kieran Archer 01453 832992 littlestarsschool.org
Hop, Skip & Jump Foundation	Provide high quality respite care for children and young adults with disabilities and SEN	hoskipandjump.org.uk 01453 836390 marcoms@hoskipandjump.org.uk
Horsfall House	Provides nursing care for residents, a Day Centre 6 days a week Home Care and meals on Wheels in the local area.	01453 731227
Longfields	Supporting any adult affected by life-limiting illness to live well; to die well; and to care well.	01453 886868 day.services@longfield.org.uk
Mark Townsend Charitable Trust	Providing help with whatever life circumstances may incur.	www.themarktownsenedcharitabletrust.com 01453 832799



# Avening Parish Council



The minutes of the meeting will be published shortly, but some of the items discussed are summarised below:

## **Crime**

There were no reported crimes in March. Two months in a row.

## **Memorial Hall**

The fire detection improvement work has been completed.

A solution to the high electricity bills has been found. Timers will be fitted to the heaters over the coming months.

Repairs have been completed to the roof at the front of the building. The north face needs replacing, and grants are being sought.

## **Dog Fouling Again**

This is a continuing problem caused by a few individuals. Dog fouling causes Toxocariasis - this is a serious illness and can lead to blindness. Please clean up after your dog, and also look after its wellbeing!

## **Playing Field**

Work will start on the footpaths this month. The plans for the playing field were presented at the WI meeting and will be displayed at the Annual Village Show on the 18<sup>th</sup> May.

## **Highways**

The traffic survey has been commissioned.

## **Local Elections**

The Parish Council does not have enough candidates to hold an election. Two new Councillors will take up their roles at the AGM. We have two vacancies where we will co-opt volunteers.

District Council Elections will still proceed as planned, and European elections will take place later in the month.

## **Next Meeting**

The next meeting is the AGM following the election on the 8<sup>th</sup> May – 7.30 in the hall.

To view at [www.avening-pc.gov.uk](http://www.avening-pc.gov.uk)

The Parish Clerk can be contacted via email: [parishclerk@avening-pc.gov.uk](mailto:parishclerk@avening-pc.gov.uk) or by phone: 07814 900512; 01453 860379

# Cherington Parish Council

The Annual Parish Meeting took place on Saturday 6th April. The minutes are now available from [cheringtonpc.org.uk](http://cheringtonpc.org.uk). The main topics discussed at the meeting were as follows:

## **Chairman's Report**

Cllr Mitchell welcomed new residents and noted a number of achievements in the last year: the installation of a defibrillator and dog waste bins, the new floor for the village hall and the resolution of problems caused by the trees near the car park. He thanked the Show committee and helpers for the very successful event; this and Christmas events helped to bring the village together.

He also thanked District Cllr Morgan and County Cllr Hirst for their support through the year. Cllr Sharpe is retiring in May and was thanked for her service: Kevin Macmahon has been elected to the seat and other councillors were elected uncontested.

## **County Councillor's and District Councillor's Reports**

District Cllr Morgan reported on improvements to waste and recycling from November 2019 (with detailed publicity nearer the time), a new CDC post to deal with dog fouling and fly-tipping and a freeze in car parking charges. County Cllr Hirst reported on GCC budget plans (see website for his report), the new Highways contractors and measures to attempt to manage the rapidly rising social care budget (e.g. with the launch of Your Circle). Both Cllrs reported that, despite a rise in the Council Tax, GCC and CDC tax levels remain amongst the lowest in the UK.

## **Useful Links**

Please report potholes using the online form at:

<https://www.gloucestershire.gov.uk/roads-parking-and-rights-of-way/roads/report-it/>

Recycling details (on receptacles and sorting) appear at:

<https://www.cotswold.gov.uk/residents/bins-and-recycling/kerbside-recycling/>

## **Village Hall**

Revenue remained good but expenditure on a new floor, a new rear door and wasp removal had reduced reserves. Pens are still available to support the hall and residents can hire tables and chairs for a reasonable fee. It was agreed that improved heating was a priority for the future.

## **Police Report**

The police were not available to attend but residents were reminded to ring 101 with issues or concerns, or 999 if there was risk of harm to individuals or property.

## Broadband

Gigaclear has offered to hold a local event to inform residents of its plans for Hampton Fields and Cherington (timing and location to be announced). Some residents already use 4G mobile solutions and can share details.

## Village Hall Access

There was a discussion of car parking at the hall entrance. This causes difficulty for disabled and loading access as well as limiting visibility at the road junction. Also there has been quite frequent damage to the green because large vehicles have limited space in which to turn. The council will seek Highways department advice on restricting car parking and on the problem of large vehicles using the village lanes.

## Welcome Newsletter

A welcome newsletter for new residents is available on the website for download and printing.

The next Parish Council meeting will be held on **Tuesday May 14th 2019** at 6pm in the Village Hall. An agenda will be placed on the village notice board.

Residents of the Parish are welcome to attend meetings; the agenda includes public participation.

The Parish Clerk can be contacted on 01453 832100 or [cheringtonparishcouncil@yahoo.co.uk](mailto:cheringtonparishcouncil@yahoo.co.uk).

## Church Floodlighting



The church looks beautiful at night when floodlit.

The church was floodlit on :

29th April in memory of Violet Townsend on her birthday

And on 12th May in memory of Mark Townsend on his birthday

If you would like to have this in memory of a loved one, or to celebrate a special event, contact: **Paul Brown 01453 835 983.**

The cost is £10 for 2 hours

## NAILSWORTH ACCOUNTANCY

### ACCOUNTANCY SERVICES FOR SELF EMPLOYED AND LIMITED COMPANIES

Self-Assessment Tax Returns  
Accounts Preparation For Small Businesses  
Company Accounts  
Business Start Ups & Company Formations  
VAT Returns and Tax Planning

For a competitive quote telephone Emma

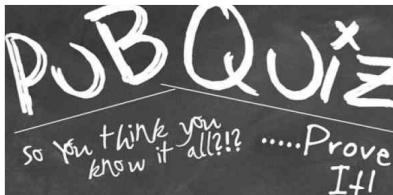
01453 835050

TOWN HALL NAILSWORTH

## TONY'S CHARITY QUIZ NIGHTS

THE BELL, AVENING

1ST SATURDAY OF THE MONTH



£1 A PLAYER

A MAXIMUM OF 4 PLAYERS PER TEAM

ALL PROCEEDS TO THE COBALT APPEAL, CHELTENHAM

## **O.L.Cottle** **Family Business**

Hand Carved Memorials : Cremation Plaques  
Additional Inscriptions : Renovations and Cleaning  
All Types of Stonework

Tel: 01453 762877

36 Slad Road, Stroud, Gloucestershire



Pub ~ Dining ~ Rooms ~ Events

## OPEN

Mon - Thur: 11am - 11pm  
 Fri - Sat: 11am - 11.30pm  
 Sunday: 12pm - 11pm

## LUNCH

Mon - Sat: 12pm - 2.30pm  
 Sunday: 12pm - 5pm

## WORKERS' POT

Mon - Fri: 5pm - 6.30pm

## DINNER

Mon - Sat: 6.30pm - 9.30pm

**DOG  
 FRIENDLY!**



## THE ROYAL OAK TETBURY

**Walkers, cyclists, explorers** - welcome to The Royal Oak in Tetbury, an 18th century inn with a classic saloon bar, courtyard, gardens and stylish lodgings. Upcycled furnishings, cosy booths, a deco piano and a dining room in the rafters offer dining as well as private dining for gatherings and celebrations.

**Cask Marque excellence** is awarded for the great selection of guest ales including Stroud brewery. The seasonal menus showcase organic meat from local farms, sustainably sourced fish specials and with monthly Meat Free Monday events and a standalone vegan menu the choice is excellent for all.

With **six lovely en suite rooms** including the sensational Oak Lodge, and three dog-friendly rooms, The Royal Oak is a fun and relaxed getaway from which to browse the chic boutiques of Tetbury or explore the beautiful Cotswolds.

**1 CIRENCESTER RD. TETBURY GL8 8EY**  
**01666 500021 | THEROYALOAKTETBURY.CO.UK**

# Dates For Your Diary

Thursday 2nd May	Local Elections		
Wednesday 8th May	Avening Parish Council AGM	Avening Memorial Hall	7.30pm
Saturday 11th May	Christian Aid Big Brekkie	Avening Memorial Hall	8.30- 10.30am
Tuesday 14th May	Cherington Parish Council Meeting	Cherington Village Hall	6.00pm
Saturday 18th May	Avening Village Party and Avening Annual Parish Meeting	Playing Fields	1.30- 4.00pm
Thursday 23rd May	European Parliament Elections		
Saturday 8th & Sunday 9th June	Photographic Exhibition	Avening Church	
Sunday 9th June	Avening Church Fete	Avening Churchyard and School Grounds	
Saturday 15th June	FOAS Annual Bear Hunt	Avening	11.00 am
Sunday 23rd June	Avening Open Gardens	Avening	tbc
Friday 5th July	FOAS School Summer Fete		tbc
Sunday 21st July	Cherington Show	Cherington	



## STEVE FLOYD PEST CONTROL ERADICATION & PREVENTION

E: [stevefloydpestcontrol@gmail.com](mailto:stevefloydpestcontrol@gmail.com)

Www.[stevefloydpestcontrol.co.uk](http://stevefloydpestcontrol.co.uk)

Fully Qualified (25 years experience)  
Fully Insured

T: 01285 643750

M 07933 357373



# £20 OFF Your Next Service

Just hand this voucher to one of our friendly team members

**PLUS  
£5**  
donation to  
Avening School  
with your service  
when you hand in  
this voucher



- All Makes and models
- Dealer level diagnostics and servicing
- Free no obligation estimates
- local free pick-ups

for free, friendly, local advice give us a call

**01453 832871**

[info@service-tech.org.uk](mailto:info@service-tech.org.uk)  
[www.service-tech.org.uk](http://www.service-tech.org.uk)



Inchbrook Trading Estate, (A46) Bath Road, Nailsworth, Stroud, GL5 5EY

# The Bell at Avening

a traditional British pub serving a great selection of real ales and food



## OPENING TIMES:

MON - FRI: 5.30PM - CLOSE

SAT & SUN: ALL DAY FROM 12 NOON

LIVE MUSIC EVERY MONTH

FIRST SATURDAY OF EVERY MONTH IS  
QUIZ NIGHT

*Little*  
**INDIA**  
at THE BELL

Little India @ The Bell, serving food from Tues-Sun 5pm-11pm  
Call **01453 836453** for great food to eat in or takeaway  
Visit our website for full menu

Call us on: **01453 836422** or e-mail us at **info@agpubs.co.uk**

[www.thebellavening.co.uk](http://www.thebellavening.co.uk)

Find us on Facebook  
by simply searching  
"Bell at Avening"



**TROUBLE HOUSE**  
CAFE | BAR | RESTAURANT

London Road  
Tetbury  
GL8 8SG

Come and visit us for Breakfast, Morning  
Coffee, Lunch, Afternoon Tea, Dinner, and  
Sunday Roasts

Plenty of parking and dogs welcome

## Opening Hours

Tuesday - Saturday 9am – 5pm

Friday & Saturday evenings dinner from 7pm

Sunday Lunch 12 – 3pm

(Closed on Mondays)

For more information please call

01666 502206 or visit [www.thetroublehouse.co.uk](http://www.thetroublehouse.co.uk)