

# The Villager

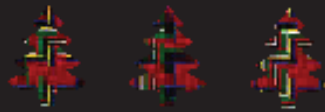
A Magazine for Avening, Cherington  
and Nags Head

December 2017/January 2018

*[editors@acvillager.co.uk](mailto:editors@acvillager.co.uk)*

# Jolly Nice...

## CHRISTMAS



### WINNER

'BEST INDEPENDENT RETAILER'

COTSWOLD LIFE FOOD AND DRINK AWARDS 2015 & 2016

'BEST RURAL START UP'

NATIONAL RURAL BUSINESS AWARDS 2016

'BEST MEAT UK'

YOUNG BRITISH FOODIE AWARDS 2017

HIGHEST QUALITY CHRISTMAS TREES AT THE  
LOWEST PRICES IN GLOUCESTERSHIRE  
(with your Loyalty Card discount)

CHRISTMAS GIFT SHOP

LOCAL FREE RANGE MEAT AND ORGANIC VEG

Frampton Mansell Stroud Glos GL6 8HZ

Open Everyday 8am-7pm

Christmas Opening Hours: 10am - 5pm 26th December - 1st January inclusive. Only closed on Christmas Day



@JollyNice\_ JollyNiceUK jollynice\_  
[www.jollynicefarmshop.com](http://www.jollynicefarmshop.com)

[www.jollynicefarmshop.com](http://www.jollynicefarmshop.com)

# December 2017/ January 2018

Welcome to the Christmas edition of the Villager, which covers both December 2017 and January 2018.

As always, our pages are packed with news of Parties, Bazaars, Christmas Fairs and even a visit from Father Christmas. We feel sure that there will be something for everyone to enjoy and share with friends and family. To start the celebrations, why not join in lighting the Christmas trees in Avening and Cherington.

The editors would like to thank you for all your support this year and wish you a very Happy and Peaceful Christmas and New Year. We look forward to greeting you all again in February 2018.

Doing something special this Christmas, don't forget your camera and send your photos in to [editors@acvillager.co.uk](mailto:editors@acvillager.co.uk) you never know they may appear in the February Villager

***The Villager Editors***

## **The Villager Magazine**

<b>Editors</b>	<a href="mailto:editors@acvillager.co.uk">editors@acvillager.co.uk</a> Jane Archer, Frances Conway and Derrick Pierce. 07812 137161 (Jane) 01453 832177 (Frances) 01453 835090 (Derrick)
<b>Advertising</b>	<a href="mailto:editors@acvillager.co.uk">editors@acvillager.co.uk</a> , Gwyneth Simpson 01453 836556
<b>Deliveries</b>	Cas Boddam-Whetham 01453 834834
<b>Deadline</b>	<b>18th of each month</b>

## **Photographs in The Villager Magazine**

Many thanks to **Jane Archer** for our cover photo of Woodstock Lane in the snow. If you have a photo of Avening or Cherington which you would like to share with us, please feel free to send it to us. You never know, it might turn up on the front cover...!

**[editors@acvillager.co.uk](mailto:editors@acvillager.co.uk)**

# *Fieldfare Café* at Thistledown Farm



We're now open Wednesday to Sunday!

Our café is set in 75 acres of beautiful meadow and woodland overlooking Woodchester Park. We serve lunch from our wood-fired clay oven & charcoal BBQ Weds to Sun and brunch Sat & Sun. Fine teas, coffees & delicious homemade cakes served 9am to 4:30pm daily. Come up for an autumn walk and enjoy a hot drink with stunning views beside our woodburner!

You can join our mailing list for info on events such as vegan tapas, storytelling and foraging days. We stock delicious sourdough bread, Organic milk, our own preserves and more. Meats are free range and we use local and Organic produce wherever possible. Dogs are welcome on leads and we have baby changing and disabled facilities.

[thistledown.org.uk](http://thistledown.org.uk) 01453 860420 tinkley lane, nympsfield, GL103UH

# What's On In Avening and Cherington

Please let us know if we have forgotten any regular event or if there is something you would like to have included here.

Event	Day	Time	Where	Contact
Line Dancing	Monday	7.30 - 9.30pm	Social Club	Social Club 01453 833760
Cherington PC	Tuesday	6.30pm	Village Hall	Beverley 01453 832100
Bell Ringing	Tuesday	7.30pm - 9.00pm	Church Bell Tower	Steve 07807 700004
Line Dancing	Tuesday	8.00 - 10.00pm	Social Club	Social Club 01453 833760
Over 60s Lunch Club	1st Wednesday each month	12.30pm	Social Club	Christine 01453 833246
WI	2nd Thursday each month	7.30pm	Memorial Hall	Maisie 01453 834679
Avening PC	3rd Thursday each month	7.30pm	Memorial Hall	Caroline 01285 380041
Avening Angels Choir	Sunday	4-30pm	Various	Derrick 01453 835090

# Contacts for the Villages

Avening and Cherington Priest	Revd. Gerald South	01453 834884
Avening & Cherington Churches Reader	Derrick Pierce	01453 835090
Avening & Cherington Cricket Club	Derrick Ind	01453 835752
Avening Angels	Derrick Pierce	01453 835090
Avening Art Group	Mick Williamson	01453 836318
Avening Bell Tower Captain	Steve Uzzell	07807 700004
Avening Church Churchwardens	Stephanie Hamilton Stephen Uzzell	07796 981308 07807 700004
Avening Church Flower Team	Doreen Pierce Gill Adams	01453 835090 01453 833175
Avening Church Organist	Colin Chambers	01666 880026
Avening Church PCC Treasurer	Ann Brick	01453 834311
Avening Film Club	Kristiane Worsdell	01453 836515
Avening History Project	Jean Chatelain	01453 834713
Avening Memorial Hall		07583 073604
Avening Oil Coordinator	Frances Lindley	01453 835115
Avening Parish Council Clerk	Sue Bryant	01452 770792
Avening Playgroup	Debbie Brown	01453 832695
Avening Primary School	Jane Rushton	01453 833191
Avening Silver Band	Jim Hill	01453 834438
Avening Social Club	Derrick Ind	01453 835752

South Cotswold Community Connector	Aileen Bendall	07810 630156
Cherington Village Hall	Wendy Eldridge	01285 841327
Cherington Parish Council Clerk	Beverley Rymer	01453 832100
Cherington Church Churchwarden	John Bate-Williams	01666 503544
Cherington Church Flower Team	Elizabeth Workman	01285 841294
Cherington Church Organist	Elizabeth Workman	01285 841294
Cherington Church PCC Secre-	Elizabeth Workman	01285 841294
Cherington Church PCC Treasur-	Paul Cable	cabes50@yahoo.co.u
Cotswold District Councillor		
Friends of Avening School	Lucie Hawkins	01453 833191
Over 60s Lunch Club	Christine Howell	01453 833246
Stroud Hospital	Reception	0300 421 8080
Tetbury Hospital		01666 502336
Women's Institute	Gwyneth Simpson	01453 836556



### **VILLAGE & AREA WEB SITES**

**Avening Parish Council: [www.avening-pc.gov](http://www.avening-pc.gov)**

**Avening Church: [www.aveningchurch.info](http://www.aveningchurch.info)**

**Cherington Parish Council: [cheringtonpc.org.uk](http://cheringtonpc.org.uk).**

**Cherington Village: [www.cheringtonvillage.co.uk](http://www.cheringtonvillage.co.uk)**

**Cotswold District Council: [www.cotswold.gov.uk](http://www.cotswold.gov.uk)**

# Letter From Avening Parish Council Leader



With the exciting plans well underway for the playing field (details will be available in the hall, and also the website soon), it's a great opportunity to ask Santa for some new sports kit, and pencil in a New Year's resolution to get a bit fitter. Depending on how the planning and funding goes, the focus will initially be on the improved pitch and running track, but the multi-use games area, gym equipment and 'pump track' will open up many more options for teams and individuals – irrespective of age and ability. The pitch will be suitable for 5 to 8-a-side junior or senior matches, or how about forming a walking football team? We hope to encourage a Pilates instructor for the warmer weather in the outdoor woodland classroom; and we will also design a circuit so you can measure your own personal best, or challenge your friends. If funding organisations are generous, we might even be able to provide grants to help set up new teams!

We're updating the Emergency Plan, which is implemented should there be any sort of major incident in the village. Hopefully it will never be needed, but we are looking for anyone with any sort of medical knowledge – doctors, nurses, first aiders, paramedics etc. and anyone with equipment – tractors, 4x4s, chain saws or similar. You don't have to do anything, and your details won't be made public, but we would retain your contact details on the plan in case you can help in such an emergency. Please forward your phone number and email to the clerk, with a brief summary of what you can offer

This year, the PC team have excelled, and with the help of you we have: kept pressure on Highways to maintain our roads; arranged successful village events; arranged grass cutting for unkempt areas, and encouraged householders to keep hedges in check; installed signs to help visitors; overseen the super improvements to the hall kitchen, and other major safety upgrades; reopened the reading room; challenged inappropriate property developments, but helped suggest compromises; worked with the APFA to upgrade the play equipment; recognised villagers through the new Pride of Avening awards; built up a healthy Facebook following; issued grants for local organisations, and to support this magazine. Thanks to everyone who has been involved. There's even more happening next year!

This is the final call for a prospective new Parish Councillor – come and join our exciting programme for 2018! We will close the vacancy on 7<sup>th</sup> January, with a view to co-opting a new member later in January – contact me or the clerk for more details and an application form (also available on the website).

Have a very merry Christmas and a happy New Year!

*Tony Slater, Chairman*



# Avening and Cherington Churches

## **AMAZON AND a Really Traditional Christmas**

Thanks to suppliers such as Amazon we can now, at the press of a button, have goods delivered to our doorstep within hours of ordering them – Christmas shopping may never be the same again. In this, and in other ways, we now often find ourselves waiting less than may have been the case some years ago. This can encourage a mind-set that suggests waiting is something undesirable and to be avoided whenever possible. The pressure on many commercial firms to maximise their sales for the Christmas period has certainly led to their publicity hitting us by the beginning of November.

However, isn't there something to be said for the anticipation that waiting involves? The value of waiting was a key part of the traditional Christmas period (not the mostly Victorian version of Christmas that is often described as 'traditional') that goes back to the early centuries AD. The weeks immediately before Christmas were treated as a time of prayerful preparation for the celebration that was to follow: this was, and still is, described as the season of Advent. This may seem a bit 'killjoy' during a period that is now a major partying time, but no – it was the preface to a prolonged celebration of the birth of Christ, hence the twelve days of Christmas. Even when these twelve days are over the Christmas celebration goes on with the period of Epiphany up to the beginning of February.

The constraints of modern life make it difficult to celebrate Christmas in this way but there may well be benefit in finding just a few minutes each day during Advent (starts on December 3<sup>rd</sup>) to take the mind away from the concerns of the moment and to quietly reflect on the deeper significance of the season and what it might mean to us individually. If it is difficult to find space to do this, your parish church is normally open during the daytime and offers a place where local people have been finding peace and inspiration for many centuries – please feel free to continue that tradition.

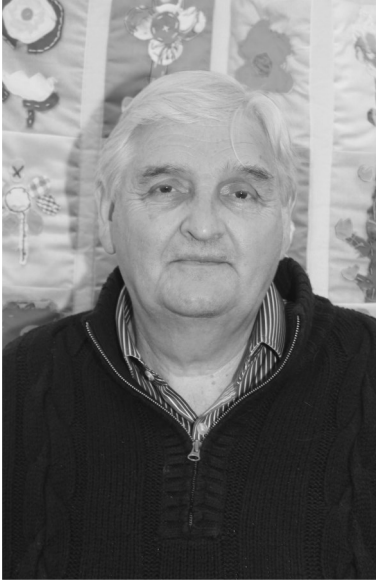
I wish you a joyful Christmas.

***Gerald South***

***Priest in Charge, Avening and Cherington  
(01453 834884 ; gp.south@btopenworld.com)***

PS What do you make of this proverb from 17<sup>th</sup> C Italy? *He who can wait hath what he desireth.*

## John Catteral



It is with immense sadness that I have to announce the sudden death of my great friend and PC colleague John Catteral.

John's considerable knowledge and experience will be a great loss to the village, and I will personally miss his easy going company and good humour.

Our thoughts are with Jo, and John's family.

*Tony Slater,  
Parish Council Chairman*

### **Carpet and Upholstery Cleaning Specialists**

#### **Barden Clean**

- Ultra fast drying times
- Environmentally friendly
- Removes stains
- High temp – sterilises carpet
- Improves air quality
- Removes dust mites
- Fully insured

**CALL NOW**

**Michael Denley**

**01453 752893  
07541 002 891**

**[www.bardenclean.co.uk](http://www.bardenclean.co.uk)**

### **Calling all Budding or Closet Journalists!**

**Do you like meeting new people and chatting to them?**

**You like writing too?**

**Then The Villager has just the job for you!**

We are keen to revitalise our 'Village People' column and are looking for someone willing to interview people in the village and write up their stories for the magazine. It doesn't have to be every month - just as and when time allows. Contact the editors on [editors@acvillager.co.uk](mailto:editors@acvillager.co.uk) or on one of the phone numbers on page 3 for further details.

We have a list of potential interviewees, but we would love to hear your suggestions for people to talk to as well. The only criteria is that they live, work or have some connection to Avening, Cherington or Nags Head.

# **START OF THE FESTIVE SEASON IN CHERINGTON**

**SATURDAY 9<sup>TH</sup> DECEMBER**



**5 p.m. Christingle Service in**

**St Nicholas Church**



**5.45 Approx. Lighting of  
the Village Christmas Tree  
with Carols on the Green  
Followed by Drinks in the  
Village Hall**

**Do join us, family and  
friends welcome**



# Avening Playgroup

## Christmas Bazaar

December 2<sup>nd</sup> 2017

2pm to 4pm

Avening Memorial Hall

*Amazing raffle prizes!!  
Including a Brand New  
Dyson V8!!*

*Adults 50p  
Children go free!!*



AVENING  
PLAYGROUP

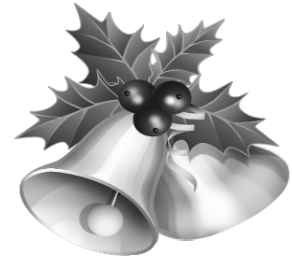


Come and meet **Father Christmas**  
Toy & book stalls, lucky dip, tombolas, biscuit  
decorating and lots more!

Designed by Archie Hatt



# THE ANNUAL CHURCH CHILDRENS CHRISTMAS PARTY



All village children aged up to 11 years  
**ON DECEMBER 10th from 3-00 to 5-00pm.**

We are expecting a visit from Father Christmas  
and have booked an entertainer .

If your children would like to come please email names and ages to  
[derrick.pierce@hotmail.com](mailto:derrick.pierce@hotmail.com) (please put PARTY in the subject line)  
we can then make sure that Father Christmas brings a gift for each  
child.

Please bring a plate of food to share

# join us

## Christmas tree switch on Saturday 2nd December 4:30

At the old phone box in the High St.



🎄 Carols with Avening Angels

🎄 Father Christmas

🎄 Lantern walk to the Queen Matilda,

🎄 where there will be FREE nibbles (Limited availability)





**CHRISTMAS  
CASH BINGO**

**SATURDAY DEC 16TH**

**7.30PM**

**@**

**SWR - TETBURY**

**CASH PRIZES RAFFLE BAR**

## Avening Homeworkers Christmas Lunch



**Wednesday 6th December**

**Queen Matilda**

From 12.00

Are you a homeworker or self-employed person living and working in Avening?

Missing the traditional office party?

Then come and join other homeworkers for Christmas lunch at the Queen Matilda.

All you need to do is choose your lunch from the link below <http://queenmatildatavern.co.uk/christmas-menu-2017/> then let Lynne know your choices on 01453 350305 or email [trulockes@hotmail.co.uk](mailto:trulockes@hotmail.co.uk)

Look forward to seeing you there.



**plumbing  
and heating**

YOUR LOCAL EXPERT

**call today**

**01666**

**503632**

Design and installation of efficient gas and oil fired heating systems

Boiler replacement and system upgrade

Oil and gas fired boiler servicing

Complete bathroom design and installation including adaptations for the elderly

Hard water treatment & drinking water filters

Leadwork & Fibreglass Roofing



Alderton 4, Priory Park, Priory Industrial Estate,  
London Road, Tetbury, GL8 8HZ

[www.indplumbingandheating.co.uk](http://www.indplumbingandheating.co.uk)

FRIENDS OF AVENING SCHOOL

# CHRISTMAS FAIR



THIS IS THE PERFECT OPPORTUNITY TO START YOUR CHRISTMAS SHOPPING AND RAISE FUNDS FOR THE SCHOOL AT THE SAME TIME!  
FOR MORE INFORMATION VISIT [FACEBOOK.COM/FRIENDSOFAVENINGSCHOOL](https://www.facebook.com/friendsofaveningschool)





## UK Top 3 Newcomer Fish and Chips - in Tetbury

All MSC certified (you can trust our fish was caught by traceable, responsible fisheries) Cod, Haddock or Hake and Chips from £5.80  
(plus Weekly Fish Special)

Have your fish grilled or fried and cooked to order - save time, phone ahead

**UK Top 3 Finalist in National Fish and Chip Awards 2017**

**Extras: burgers, Cotswold pies, fishcakes, chicken goujons, squid, king prawns, mushy peas, onion rings, salads etc - see full menu online**

~

Open 7 days a week 12-3pm and 5-9pm (10pm on Fridays)

Next to Priory Inn, London Road, Tetbury GL8 8JJ ~ 01666 500690

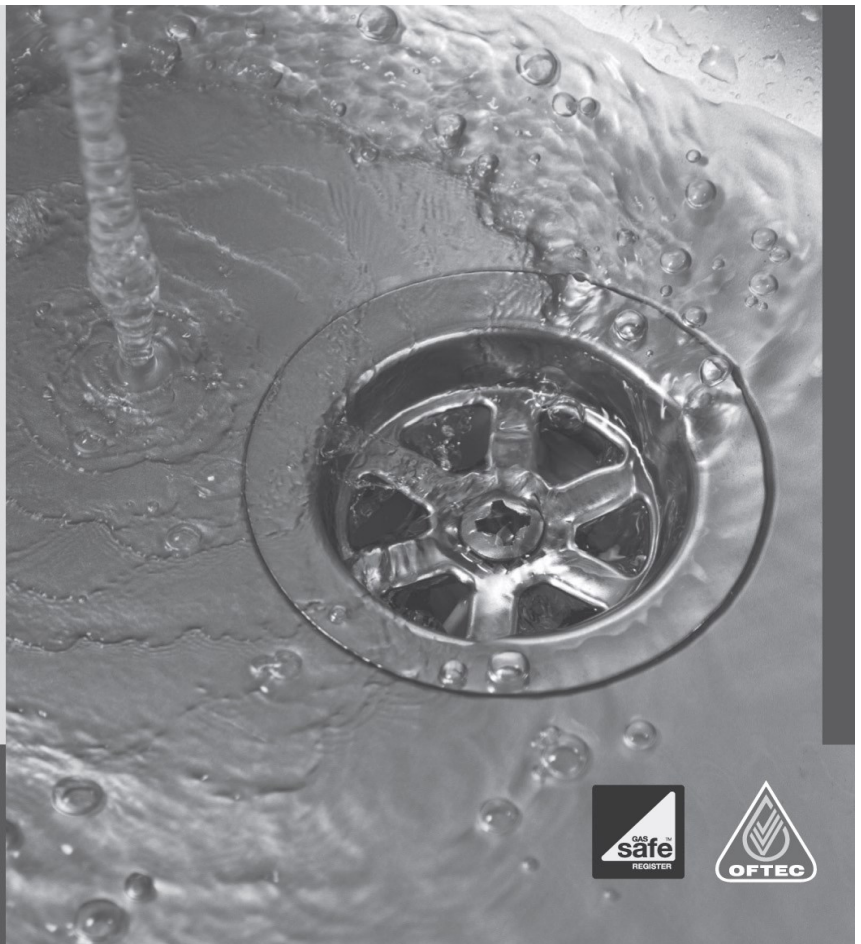
Web: [stargazyfishbar.co.uk](http://stargazyfishbar.co.uk) • Twitter: @Stargazyfishbar • FB: StargazyFishBar



**Plumbing  
& Heating**  
(Cotswold) Ltd

- Oftec and Gas safe registered
- Boiler replacements
- New build and renovations
- Heating updates and alterations
- Underfloor heating
- Bathrooms
- Water softeners
- Over 35 yrs experience
- Tetbury based

Clive Alley t: 07584414624  
Scott Wilkins t: 07717750247  
e: [scott@awplumb.co.uk](mailto:scott@awplumb.co.uk)  
[www.awplumb.co.uk](http://www.awplumb.co.uk)



# Puzzle Corner

	1		5				7	
	2			9	8		4	1
3			4			6		
				6				3
	6	3				4	2	
5				4				
		9			5			2
2	5		3	7			8	
	3				1		6	

(Answers on page 38)

## Sudoku

Fill in the blank squares so that each row, each column and each 3-by-3 block contains all of the digits 1 to 9.

© 2013 KrazyDad.com

### Across

1. Utensil (5)
3. Path (5)
7. Disregarded (7)
9. Send out (5)
10. Military command (5)
11. Mythical beast (7)
12. Taste (6)
14. Movie house (6)
18. Bet (7)
20. Deduce (5)
22. Unsuitable (5)
23. Roamed (7)
24. Finished (5)
25. Small boat (5)

### Down

1. Mariners (7)
2. Possessed (5)
3. Boredom (6)
4. Legal excuse (5)
5. Svelte (7)
6. Beer mug (5)
8. Relating to country life (5)
13. Tycoon (7)
15. Dialect (5)
16. Condense (7)

1		2				3		4		5		6
7				8				9				
10						11						
12		13					14	15				16
						17						
18				19				20		21		
22						23						
		24						25				

17. Worshipped (6)
18. Forgo (5)
19. Graded (5)
21. Criminal (5)

# Avening Playgroup

At the time of reading this article, Playgroup's main fundraising event, the Christmas Bazaar, will be upon us. Thank you to everyone who has supported this event in any way. We are very grateful.

If you get a chance, please do call in to see us from 2-4pm on Saturday 2<sup>nd</sup> December. The bazaar is not just for young children, although Father Christmas will be there. We have various stalls, including the bottle tombola, and we will be serving coffee, tea and mince pies.

Our new chair Helen has been working hard to get lots of fantastic prizes for our raffle, which include a brand new V8 absolute DYSON vacuum cleaner, a family ticket to Wethecurious, free entry for one adult and one child to Cotswold Wildlife Park, a 16 year old Chateaux Russeau Medoc red wine and Sunday lunch for four at Ruskin Mill. There are lots more besides, so it's well worth buying some tickets.

Father Christmas will be with us once again travelling through the village on his float between 5 and 7 pm on Sunday 10<sup>th</sup> December. This year the money raised will be divided between playgroup and The British Heart Foundation. We would like to thank the Harwood family, without whom this event would not be possible, and of course Father Christmas himself.

On behalf of everyone at Avening Playgroup, we would like to wish you all a very happy Christmas and New Year.

If you would like to contact us, please phone us on 01453 832695 or email us at [aveningplaygroup@gmail.com](mailto:aveningplaygroup@gmail.com)

*Debbie Brown*

## PETER JOY

Sales & Lettings

### Sales

01453 833747 [nailsworth@peterjoy.co.uk](mailto:nailsworth@peterjoy.co.uk)

### Lettings and Management

01453 833847 [lettings@peterjoy.co.uk](mailto:lettings@peterjoy.co.uk)

PROUD SUPPORTERS OF AVENING PLAYGROUP



Part of Cotswold Befrienders

## People For You

### Your Volunteer Befriending Service in Fairford, Lechlade, Tetbury & Surrounding Villages

People are what make our communities vibrant and interesting, so every single person matters.

People for You understands the issues affecting local people – acknowledging that sometimes, through bereavement, ill-health, family moving away, or simply the times we live in; people can feel lonely, isolated and vulnerable, particularly in later life. We know how important social contact is in making us feel a valued and vibrant part of our community.

People For You has been providing a free volunteer befriending service for nearly ten years. We cover Fairford, Lechlade, Tetbury, and surrounding villages in the South Cotswolds.

Our volunteer visitors are local people you can rely on. They will visit you on a regular basis, offering companionship, a chance for a chat, or to share a laugh, and a listening ear – everything you need from a valued friend.

If you feel this service could be of interest to you or a family member or friend, please do give us a call.

And if you would like to find out more about how to volunteer, again please contact us.

For more information email **Sue Black** [sue.peopleforyou@grcc.org.uk](mailto:sue.peopleforyou@grcc.org.uk) or call her on **07810 630167**.

*“Before I had my visitor, my only companion was the television.....The special quality of the service for me is that now I have something to look forward to every week, whereas before I never knew when I would next have someone to talk to”.*

People For You is managed by Gloucestershire Rural Community Council (GRCC) <http://www.grcc.org.uk/>



# Horsfall House

Nursing Home | Day Centre | Home Care

Horsfall House is a purpose-built Nursing Home, Day Centre & Social Club, and Home Care Provider in Minchinhampton, we are looking for...

**SELF EMPLOYED HAIRDRESSER**  
to work in our fully equipped salon a few hours a week.

**BANK MINIBUS DRIVERS**  
to cover annual leave and illness.

If you are interested in either position and would like further information please call us on  
**01453 731227**

Cas Boddam-Whetham. MCSP RCT  
**Chartered Physiotherapist**  
**Craniosacral Therapist**

21 Nags Head Lane, Avening, Glos GL8 8NZ

**01453 834 834**

Web page—[www.casbw.co.uk](http://www.casbw.co.uk)

Member of the Organisation of Chartered Physiotherapists  
in Private Practice

Registered with the Health Profession Council  
and all major medical insurance companies

For treatment, advice or a friendly chat about your problem.

## Springtime in September

This is the perfect English scene - healthy green grass, a field full of sheep and lambs and out of the bluest of skies the warm Spring sun is shining down.

But it's not an English scene because, suddenly, lolloping along the side of the field come three kangaroos .....

I'm two hours north of Perth, Western Australia, the most remote capital city in the world. Driving from the airport along the main Northern Highway (with not a pothole to be seen) we headed on into the wonderful areas of pastureland and thence to our destination. The weather was not at all kind to us to begin with - cold winds, cold rain and grey skies but after a day or two Spring really did arrive and with it the warmth we'd hoped for.

Total silence is something very unique in this day and age but, a few mornings later, sitting outside, it was truly remarkable to be aware of just that very thing. No cars, no aeroplanes, no machinery noise, no people talking - just a very happy little bird singing its heart out, quite a few bees buzzing gently around the fragrant shrubs and, from time to time, the bleat of a lamb looking for its mother. Being Spring, the bird world gets extremely busy and my companions that morning were these tiny birds with wagging tails all furiously chatting each up each other and busily tucking into the ants and grubs they were finding in the rockery.



Not only was it lovely to see so many bees but also a constant display of beautiful butterflies, including a Monarch which I've not seen in England for a very long time. They were joined at one point by a dragonfly, the sun glinting on its iridescent wings as it soared round and up into the blue sky.

Apart from enjoying the peace and beauty of the countryside, the city of Perth has a great deal to offer. Like most cities nowadays, sky-scrapers dominate the scene to a certain extent but one can easily ignore them and look instead at the Swan River running through the centre of the city, the wonderful parks and beautifully tended gardens. There is also an impressive Cathedral, two Concert Halls, good shops and interesting restaurants. It's a prosperous, friendly city and a fun place to spend time.

Of course, because of the season, the wild flowers are beginning to come out in abundance. Driving along, the roadsides are a patchwork of colour - vibrant blues, yellows, pinks and - in certain damp areas, huge clumps of Madonna



lilies growing wild and looking spectacularly beautiful. This year we had just missed the local annual Spring Flower Festival but I was lucky enough to see it last year and wasn't at all surprised to learn that it's very much one of the local highlights.

I don't have many more days here before flying back to a very different climate - Autumn in England can be beautiful but, on the inevitable chilly days of the approaching winter, I'm so lucky to be able to have the memories of these lovely warm, sunny Australian Spring days.

*Ann Tarlton*

## Unwrapping Christmas



We all know the Christmas story. What is behind the different aspects of the story? How do the details fit into the bigger picture? How do the story tellers (the Gospel writers) choose how to describe their story?



If you would like to hear how some of these questions can be answered you are welcome to come to two Advent evenings at The Rectory, 5 Orchard Field, 7.30pm on Wednesdays 6<sup>th</sup> and 13<sup>th</sup> December.



Please let Gerald South know if you are coming: 01453 834884 or [gp.south@btopenworld.com](mailto:gp.south@btopenworld.com)



Pub ~ Dining ~ Rooms ~ Events

## OPEN

Mon - Thur: 11am - 11pm  
 Fri - Sat: 11am - 11.30pm  
 Sunday: 12pm - 11pm

## LUNCH

Mon - Sat: 12pm - 2.30pm  
 Sunday: 12pm - 5pm

## WORKERS' POT

Mon - Fri: 5pm - 6.30pm

## DINNER

Mon - Sat: 6.30pm - 9.30pm

**DOG  
 FRIENDLY!**



## THE ROYAL OAK TETBURY

**Walkers, cyclists, explorers** - welcome to The Royal Oak in Tetbury, an 18th century inn with a classic saloon bar, courtyard, gardens and stylish lodgings. Upcycled furnishings, cosy booths, a deco piano and a dining room in the rafters offer dining as well as private dining for gatherings and celebrations.

**Cask Marque excellence** is awarded for the great selection of guest ales including Stroud brewery. The seasonal menus showcase organic meat from local farms, sustainably sourced fish specials and with monthly Meat Free Monday events and a standalone vegan menu the choice is excellent for all.

With **six lovely en suite rooms** including the sensational Oak Lodge, and three dog-friendly rooms, The Royal Oak is a fun and relaxed getaway from which to browse the chic boutiques of Tetbury or explore the beautiful Cotswolds.

**1 CIRENCESTER RD. TETBURY GL8 8EY**  
**01666 500021 | THEROYALOAKTETBURY.CO.UK**





# Christmas Menu

Two courses £20 | Three courses £25 | Four courses £30

## STARTER

- Roasted Pumpkin Soup with Curry Oil Drizzle (vn)
- Portobello Mushroom Schnitzel with Lemon & Caper Aioli (vn)
- Home Marinated Bibury Trout with Crème Fraiche & Pumpernickel Bread
- Potted Ham Hock with Pickled Vegetables & Cranberry Chutney

## MAIN EVENT

- Beetroot Nut Roast (vn)  
*Mustard Glazed Brussels Sprouts, Braised Cabbage, Maple Syrup Glazed Carrots, Rosemary Roast Potatoes, Roasted Parsnips & Cashew Miso Gravy*
- Roast Turkey with Pork & Chestnut Stuffing & Pigs in Blankets  
*Mustard Glazed Brussels Sprouts, Maple Syrup Glazed Carrots, Rosemary Roast Potatoes, Roasted Parsnips & Walnut & Apple Turkey Gravy*
- Pan Roasted Brill in Cider & Lemon Butter Sauce  
*Leeks, Cabbage, Potato Cake*
- Slow Braised Bavette of Beef  
*Horseradish Mash, Red Cabbage, Rich Beef Liquor*

## PUDDING

- Apple & Cranberry Crumble with Vanilla Custard (vn)
- Gingerbread Pudding with Sticky Toffee Sauce (vn)
- Traditional Figgy Pudding with Brandy Butter & Clotted Cream



## CHEESE BOARD

A Trio of Gloucestershire Cheeses  
*with Artisan Crackers, Peppered Honey, Celery & Grapes*

Nut Cultured Vegan Cheeses by Asparagasm (vn)  
*with Flaxseed Crackers & Rhubarb Chutney*

Some of our foods may contain nuts and other allergens. If you have any special dietary requirements, please speak to a member of our restaurant team who can advise you.

Fair Tips: We only apply 10% service charge for tables of 8 or more.

All tips given for good service are fairly shared between your waiting, kitchen and housekeeping staff

The Royal Oak, 1 Cirencester Rd. Tetbury GL8 8EY | 01666 500021 | stay@theroyaloaktetbury.co.uk

# **A Christmas Carol-Singing Pub Crawl!**

## **Thursday 21st December**



**Join Avening Angels for some convivial carol singing round the village, starting at the Queen Matilda at 8pm and moving on to The Bell about 9pm.**

**Additional stops can be arranged on request!**

## **About Thistledown Farm and Fieldfare Café**

Our campsite was established 10 years ago and offers 'back to basics' camping with environmental facilities, acres of space, and most importantly to me, proper campfires for everyone! In the last decade we've won many awards including the 'England's Number One Campsite' from Guardian Travel, Cool Camping, MSN Travel, Red Bull Adventure Guide and more. A couple of years ago we decided to set up a café for the campers but it's since proved even more popular with locals! Our café uses free range meats and Organic produce wherever possible, including award-winning local suppliers such as Salt Bakehouse and Woefulthane Organic Dairy. We are now open Wednesday - Sunday for lunch, and offer brunch at the weekend and evening meals and pop-up events on selected nights. Our dining conservatory offers stunning views of Woodchester Park and houses the open kitchen where meals are prepared using our wood-fired clay oven and charcoal barbecue.

We are now donating 5% of all hot drinks sales to Stroud Valleys Project to spend on tree planting and habitat creation within the Stroud District. They rely on donations and volunteers to operate so hopefully this will make a big difference and enable the planting of thousands of extra trees per year. I really wanted to set up a loyalty scheme but didn't fancy the 'buy 9 drinks get 1 free' approach and I really feel that this kind of 'environmental loyalty scheme' will resonate with a lot of our customers, especially once we start seeing woodland creation that's been funded by it!

**Ryan**

# *Phoebe Carter*

*Fine Artist*



*Accepting commissions for animal portraits. A perfect, personalised gift this Christmas. All commissions are done in graphite pencil on white paper. Commissions will be mounted unless requested otherwise.*

*Please send Commissions to*  
**phoebescarter@gmail.com**

*Please send one or two high quality photographs of your four legged companion that are clear and well lit, along with contact information.*

*Drawings start at £60.*

**ORDER BEFORE DEC  
15TH FOR CHRISTMAS  
2017**





# Avening School

## It's Showtime!

As the countdown to the end of term begins, staff have been rummaging amongst the props and costumes in the craft cupboard, classes have been practising their singing and the rehearsals have begun for this year's Christmas productions. This year, the Eagles and the Kestrels (reception, y1&2) will be performing 'Wriggly Nativity' – a Christmas performance when we just can't keep still! Meanwhile, in KS2, the Hawks and the Owls have been getting magical as they prepare to tell the story of Aladdin in their production of 'A-lad-in Trouble'! Key Stage 2 are also rehearsing with SWR's music teacher, Mr Dillon, ready to perform at the SWR Carol service in St Mary's Church, Tetbury at the end of term.

As well as performing, we are also enjoying some theatre trips ourselves. In December, the infant children are off the Wyvern Theatre to see Peter Pan. The Owls were fortunate to see War Horse last month at the Bristol Hippodrome. They were completely spellbound by the experience, so much so that they wrote some brief reviews to the director of the play. The production company were so impressed that they plan to use six of these reviews as part of their social media advertising for the show. Seeing the production really helped the children to appreciate the horrors of World War 1, and this was

something we all thought about as the school participated in our Remembrance Service this year. The Year 6 children solemnly read the names of the fallen from Avening, while the School Council placed crosses around the base of the Millennium Cross.



*School Remembrance Service*

Happiness Week lifted our spirits during mid-November, when the children took part in a range of activities designed to promote mental health and anti-bullying messages. The children took part in a yoga session, a samba drumming workshop and decorated friendship pebbles – a token of kindness

for others to find around the school.

As the end of term comes ever closer, the glitter is beginning to sparkle as we prepare for our festive season, starting with the FOAS Christmas Fair on Friday 1 December. Please join us from 2.30 – 4.30pm in the Village hall for local stalls, festive fun and fabulous singing from our school choir.

Term ends with a magical Christingle service in the church, followed by our Christmas parties – and you never know when a certain white-bearded, red-robed special guest might make an appearance....

In January, we look forward to our annual visit to the Young Voices concert at Birmingham NEC and new term topics and after school activities.

Merry Christmas from Avening Primary School and a Happy New Year. See you all in February!

*For further information about our happy, busy place of learning, please see our school website; [www.avening.gloucs.sch.uk](http://www.avening.gloucs.sch.uk).*

**Alex Adcock**

## **NAILSWORTH ACCOUNTANCY**

### **ACCOUNTANCY SERVICES FOR SELF EMPLOYED AND LIMITED COMPANIES**

Self-Assessment Tax Returns  
Accounts Preparation For Small Businesses  
Company Accounts  
Business Start Ups & Company Formations  
VAT Returns and Tax Planning

For a competitive quote telephone Emma

**01453 835050**

**TOWN HALL NAILSWORTH**

# Down to Earth

To call a garden a triumph of transformation is to give it the ultimate accolade, for it implies that an individual – or it could be a team – has looked at a site, and, having considered carefully its attributes and limitations, has imaginatively conceived an outcome which may be years in the making and maturing, yet which succeeds despite all the odds. Such is the garden at La Mortella. (Le mortelle are the myrtle bushes that grow between the rocks; La mortella, myrtle bush in the singular.) It lies 1,400 miles to the south of here in the Bay of Naples, but I shall tell you about it anyway. Let it be the dream that lifts your spirits out of this (as I write) cheerless and foggy November gloom.

The composer Sir William Walton and his young Argentinian-born wife, Susana, came to Ischia in 1949, shortly after their marriage. They rented initially and only built the house in the centre of the garden later. Their first thoughts were of creating a garden out of a rocky, south-facing declivity above the small town of Forio. The actor, Sir Laurence Olivier, discouraged the project, dismissing the land as 'a stone quarry', but, Ischia being a volcanic island, the soil was fertile. Moreover, the site was sheltered from cold northerly air flow. Susana, in particular, could see the possibilities of planting and nurturing rare and exotic species. The garden designer Russell Page was called upon to design a shady tropical valley in the lower part, which he embellished with a rill and a series of four fountains. Susana designed the Hill Garden for Mediterranean and sub-tropical species that would thrive in a dry, sunny environment.

We visited La Mortella under an azure sky on a warm day at the end of October, at the end of its open season. Entering through the ticket office below, stepping into 'The Valley' one is immediately transported to the tropics, seduced by



splashing water, foreign bird calls and the other-worldliness of equatorial foliage, ranging from delicate fronds to paddle-shaped leaves. One extraordinary tree had a smooth trunk punctuated with spiny protruberances: the *Chorysia speciosa*, grown from seed – would you have believed – planted by Susana, Lady Walton, in 1983. Passing

*Russell Page's pool with Chorysia speciosa behind*

the Villa Walton and the tea room, winding steps ascend steeply to focal points in the Hill Garden: William's Rock, where the composer's ashes are buried; the Thai temple, amidst bamboos and acers; and the Crocodile Cascade, only the crocodile is a make-believe! There is profusion and variety in the plantings, skilfully and knowledgeably done by Susana.



*Crocodile Pool at La Mortella*

This extraordinary transformation, from 'stone quarry' to garden of distinction, is being preserved and maintained by a foundation, which also honours Sir William Walton's musical legacy, promoting concerts and other musical events. A young pianist was giving a recital while we were there. It really is worth a trip across the Bay of Naples, if ever you find yourself near the foot of Italy.

Despite the multitude of tasks on the list, my Assistant Gardener persists in asking: 'Shall I start pruning this ... or that ...?' Invariably, my answer is: 'No. Wait until full dormancy in around February or March, just before growth recommences.' Usually, pruning will stimulate the plant to produce new shoots. These shoots are hardly likely to do well if they are launched just at the start of the season of frosts, snow, low light-levels or dry, desiccating north-easterly winds. Effort wasted. Most pruning is best done at the start of the growing season. However, for plant-specific instructions, consult the RHS web-site.

There is still (just) time to plant camassia bulbs. Sarah Raven calls camassias, 'One of the most tolerant and long-lived bulbs you can grow'. They withstand low temperatures and heavy soil and clump up nicely once you have them established. I have seen large areas of them naturalised at Highgrove, Kew and Batsford. A reliable and popular species is the camassia leichtlinii 'Caerulea' (blue). There is also the 'Alba' (white). They flower in May, nicely filling the gap between the narcissi and the early summer aubretia and other non-bulbs. For robust spikes of outward-facing twinkling stars, plant some camassia bulbs - quickly!

***Marilyn Jones***

## Avening W.I.

Our November meeting is when we hold our A.G.M. We presented a report of all the many activities we have been involved in over the last year. We also have two new members joining our committee. Welcome to the two Sues, Sue Osborne and Sue King.

Our speaker Sue Prentice and her friend 'The Dame and the Diva' did not give a talk but entertained us with humorous songs, poems and little playlets aimed at women 'of a certain age'. Our members enjoyed their performance very much. We do not have a speaker at our December meeting as we have a Christmas party with games devised by Shirley Hand, a bring and share supper and Secret Santa gifts.

We held yet another Fun Quiz again devised by Shirley at the Social Club. We had a very good number of participants who had a really good evening helped along with a ploughman's supper. The profits will be sent to Tetbury Hospital. Our next quiz will be in the Spring. We did not win the W.I. County Quiz but our two teams came a creditable 5<sup>th</sup> and 14<sup>th</sup> with very few points between us.

We had our first win for a while at a friendly skittles match against Nailsworth W.I. Perhaps this is the turning point in our fortunes!

We have just enjoyed our monthly W.I. walk, this time without getting wet! A small group of us walked from Rodborough Common down to Capels Mill and along the towpath of the newly restored Thames and Severn Canal along to Wallbridge where we enjoyed lunch in the Upper Lock Café.

We are holding a session making Christmas wreaths so you may spot some of them on display around the village. We have also entered a competition held by the County W.I. to make a banner to commemorate the 100<sup>th</sup> Anniversary of the Gloucester Federation. We have submitted a design and, if chosen, the banner will be displayed at Denman, the W.I. College in Oxfordshire. We plan to make the banner even if we do not win.

We have had a disappointing response to our invitation for villagers to join our Christmas shopping trip to Worcester. Perhaps villagers would like to suggest a venue which would attract them to join us in future. Our other Christmas activities include the annual Carol Concert at Cheltenham Town Hall and lunch at the Snooty Fox. We are also providing a full Christmas lunch to the Stroud Macular Society and to the Beeches Park residents.

If you are new or not so new to the village and you would like to see if the W.I. is for you, you are very welcome to come and join any meeting without commitment.

*Gwyneth Simpson*



# Dying without a Will. Now that's a real tragedy.

No-one likes the thought of dying, so it's hardly surprising that almost 3 out of 5 UK adults don't have a valid Will (source: [www.unbiased.co.uk](http://www.unbiased.co.uk) 2010). Yet having one is one of the most important arrangements you can make during your lifetime.

My name is David Martin. I live in Nailsworth and I'm the local consultant for *Steele Rose & Co* - one of the UK's Premier Professional Home Visit Will Writers. After 22 years serving my country in the RAF, I have spent the last 28 years of my life professionally advising my clients on all personal financial matters and specialising in Wills.

Writing a Will is easier and cheaper than you think. It also ensures that your wishes are carried out simply and efficiently - causing the minimum of anguish for those you leave behind. If you would like to discuss your Will arrangements, redraft an existing Will, Lasting Powers of Attorney, or other associated legal services, at a mutually convenient time in the comfort and privacy of your own home, please contact me:



David Martin

David Martin, local consultant,  
Steele Rose & Co  
(Nailsworth & surrounding areas)  
01453 836699 (M) 07973 405997  
Email: [dcmartin@hotmail.co.uk](mailto:dcmartin@hotmail.co.uk)  
[www.steelerose.co.uk](http://www.steelerose.co.uk)  
Members of the Society of Will Writers



**BELL  
HOUSE**  
Dental Practice

- **Dentistry for all the Family**
- **Private and Denplan**
- **Cosmetic treatment**
- **Tooth whitening**
- **Hygienist**

 **Denplan**  
At the heart of dental care



Robert W. Carter B.D.S.  
7 New Church Street . Tetbury . Gloucestershire . GL8 8DS  
Telephone (01666) 503788

0100315

# Elsie's FGR Experience

On the 18<sup>th</sup> of November I went to watch FGR play against Crewe. We started strong having about 10 opportunities to shoot, but no one decided to take the shot. They just kept passing it around the box until Keanu Marsh-Brown was brave enough to have a go, but by then it was too late and defenders blocked the shot immediately. Crewe were a very physical team so there was a lot of pushing and shoving which lead to a couple of yellow cards in the beginning stages of the match. FGR were dominating the game until one slip up where Crewe's attacker slid the ball right past our keeper 13 minutes into the game putting them 1-0 up. Despite Crewe being in the lead, we were still keeping hold of the game, having possession for long amounts of time and one minute before half time Christian Doidge scored a brilliant goal levelling out the game ready for the second half.

Coming into the second half it felt like we were unfocused and it didn't help that the 413 away supporters from Crewe got moved under cover into the North stand whilst the game was going on because it was pouring down with rain. Quite early on in the second half, Crewe scored again which was unfortunate but as long as there was time on the clock we could bring it back. After a while of playing tension grew between the players creating slight chaos on the pitch, especially as the referee couldn't handle it. For the crowd it was quite funny to watch and I'm not surprised that a couple more yellow cards were shown.

Moving on later into the game, Emmanuel Monthe crossed the ball into Doidge who hit it, and we all thought it was going in, but it rebounded off of the post back to Dan Wishart who crossed it back to Doidge who made sure that this one hit the back of the net. A sigh of relief came across the crowd and there was still time left on the clock so we kept on dominating the game which resulted in a third and final goal for FGR in injury time, 1 minute before the game ended scored by Alex Lacovitti. The whole stadium was buzzing!

This game was a rollercoaster of emotions but we ended up with 3 more points under our belt putting us 19<sup>th</sup> on the table. We are now 5 games unbeaten, let's hope it can carry on.

COME ON YOU ROVERS!!!!!!!!!!!!

Who's it against?	Date!	Time!	Home or Away!
Grimsby	Saturday 9 <sup>th</sup>	3:00pm	A
Luton	Saturday 16 <sup>th</sup>	3:00pm	H
Carlisle	Saturday 23 <sup>rd</sup>	3:00pm	H
Exeter	Tuesday 26 <sup>th</sup>	1:00pm	A
Lincoln City	Saturday 30 <sup>th</sup>	3:00pm	A

*Elsie Heslop*

# PETER SAVAGE

FENCING AND GATES SUPPLIED AND FITTED  
FIREWOOD – LOGS AND KINDLING  
JCB EXCAVATIONS – DRIVES, FOOTINGS, ETC.  
SOIL, GRAVEL AND HARDCORE SUPPLIED

**Tel: 01453 833239**

dental  
practice

townes  
townes  
associates

*Family Dentistry You Can Rely On*



[www.familysmile.co.uk](http://www.familysmile.co.uk)

Satisfaction rating:  
more than 99%

100% of patients  
asked would  
recommend  
us to family  
& friends

Quote 'Villager' for a 50% discount on a full New Patient Examination  
with x-rays for just £39.50. Telephone us on **01453 827474**

## Do you have a mole problem?

With over 30 years experience in traditional mole control I can effectively, discreetly and humanely remove the culprit(s)! No gas, chemicals or poisons used and completely safe to children and pets.

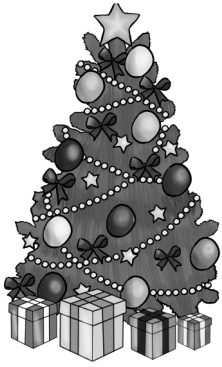
**No Mole – No Fee!**

**07766 132934 (Days) 01285 770968 (Evenings)**

**[www.gbstateservices.com](http://www.gbstateservices.com)**

Member of the British Traditional Molecatchers Register. Member of the Guild of British Molecatchers  
BPCA/RSPH level 2 certificate in pest control. Fully insured and references available

## Christmas Tree Recycling



This year Longfield Hospice are launching a Christmas Tree Recycling Campaign.

Leave the effort of getting rid of your Christmas tree in the New Year to Longfield Hospice Care!

Longfield along with over 20 other hospices in the UK will collect real Christmas Trees from your home for a donation to their local hospice. This will be done over a three day period 5th, 6th and 7th January 2018

The trees will be shredded here at the hospice and the majority used in our beautiful gardens.

So while you're going to Midnight Mass, toasting the Queen, or tucking into your Christmas turkey, our nurses will be in people's homes, supporting them when they need it most.

Longfield provides this specialist support every day of the year, night and day, and it's provided completely free of charge - So please be generous in donating to Longfield this Christmas, because we're providing vital services in your community (as well as collecting your Christmas tree in the New Year!)

Register your tree for collection <http://tinyurl.com/RecycleYourTree> or contact Julia Mundell/Claire Ellis for more information on 01453 886868

## From the Church Registers

15 <sup>th</sup> October	Baptism of <b>Christopher</b> and <b>Penelope Berry</b> at Avening
4 <sup>th</sup> November	Wedding of <b>Emma Benton</b> and <b>Alex Bell</b> at Avening
12 <sup>th</sup> November	Baptism of <b>Cooper Chalfin</b> at Cherington
13 <sup>th</sup> November	Committal of <b>Richard Rees</b> at Westerleigh Crematorium and Thanksgiving Service at Avening

## Small Ads

### FREE TO A GOOD HOME

Two single beds with mattresses - good condition)

Three-piece wicker conservatory suite (cushions possibly in need of re-covering)

Free to a good home (not necessarily all together)

Collection only from Avening. please call Pat: 01453 832 916



# Avening Cinema Club

No film in December, but from January the film will be on the first Wednesday of the month in the Memorial Hall.

**KEEP YPUR EYES OPEN FOR POSTERS WITH DETAILS OF THE JANUARY FILM**

*Kristiane Maseyk*

**KP GARDENS for Logs & Kindling**  
Est. 1984

**KILN DRIED PREMIUM QUALITY  
FIREWOOD**

**☎ 07813 790905 or 01666 503782**

- Premium Quality Kiln Dried Hardwood Logs
- Sustainably sourced
- Very clean burning (low smoke)
- Delivered to your door


email: [kpgardens@hotmail.co.uk](mailto:kpgardens@hotmail.co.uk)



**STEVE FLOYD PEST CONTROL**  
ERADICATION & PREVENTION

E: [stevefloydpestcontrol@gmail.com](mailto:stevefloydpestcontrol@gmail.com) T: 01285 643750  
[www.stevefloydpestcontrol.co.uk](http://www.stevefloydpestcontrol.co.uk) M: 07933 357373

Fully qualified (25 years experience)  
Fully Insured

**TOAD HALL**  
TRULL FARM  
TETBURY  
GL8 8SQ



Your own private room for lunches, dinners, drinks, receptions, childrens parties, business meetings, exhibitions, film nights. Large screen and internet.

Kitchen plus smaller room available. Outside or "inhouse" catering. A marquee could be added if required.

For Bookings and prices please contact :  
Fi Mitchell  
[fimitchell06@btinternet.com](mailto:fimitchell06@btinternet.com)  
**01285 841229 07885 094393**

# Puzzle Answers

S	P	O	O	N		T	R	A	I	L		S
A		W				E		L		I		T
I	G	N	O	R	E	D		I	S	S	U	E
L		E		U		I		B		S		I
O	R	D	E	R		U	N	I	C	O	R	N
R				A		M				M		
S	A	M	P	L	E		C	I	N	E	M	A
		A				A		D				B
W	A	G	E	R	E	D		I	N	F	E	R
A		N		A		O		O		E		I
I	N	A	P	T		R	A	M	B	L	E	D
V		T		E		E				O		G
E		E	N	D	E	D		C	A	N	O	E

9	1	4	5	3	6	2	7	8
6	2	5	7	9	8	3	4	1
3	8	7	4	1	2	6	9	5
4	9	1	2	6	7	8	5	3
8	6	3	1	5	9	4	2	7
5	7	2	8	4	3	9	1	6
1	4	9	6	8	5	7	3	2
2	5	6	3	7	4	1	8	9
7	3	8	9	2	1	5	6	4

## A Bite to Eat?

### Arranging a Group Lunch, Christening other social event ?

Avening WI 'Bite to Eat' scheme may be able to assist with your catering needs. We can provide and serve a selection of freshly prepared sandwiches, scones, cakes etc; a fork or finger buffet; or a two course meal.

**For prices and any further details phone 01453 835752  
or e-mail [eileenind@gmail.com](mailto:eileenind@gmail.com)**

## TONY'S CHARITY QUIZ NIGHTS

AT

THE BELL, AVENING

1ST SATURDAY OF THE MONTH



£1 A PLAYER

A MAXIMUM OF 4 PLAYERS PER TEAM  
ALL PROCEEDS TO THE COBALT APPEAL,  
CHELTENHAM



The  
**GEORGE**  
Veterinary Group

**24 hour emergency care**

with the George Vets means you'll see  
OUR vets when you need us most -  
you won't be sent elsewhere!



**TETBURY SURGERY**

23 Church Street

**Tel: 01666 503531**

[www.georgevetgroup.co.uk](http://www.georgevetgroup.co.uk)

**Hospital : 01666 823165**

**Equine : 01666 826456**



## **O.L.Cottle** **Family Business**

**Hand Carved Memorials : Cremation Plaques**  
**Additional Inscriptions : Renovations and Cleaning**  
**All Types of Stonework**  
**Tel: 01453 762877**

**36 Slad Road, Stroud, Gloucestershire**



## **Fred Stevens** **Funeral Directors**

We give immediate attention – 24 hours  
Traditional and contemporary styled  
funerals arranged  
Individual, flexible approach  
Well established, family-owned company with highly  
experienced staff

Newmarket Road, Nailsworth, Gloucestershire GL6 0DQ  
telephone 01453 832188  
[email@fredstevens.co.uk](mailto:email@fredstevens.co.uk) [www.fredstevens.co.uk](http://www.fredstevens.co.uk)

# Cherington Parish Council

## Planning

31 October 2017, 17/04503/TCONR: T1 - Goat willow, reduce; T2 - Hawthorn - reduce; T3 - Large Ash - crown lifted; G1 - 3 trees, reduce. The Old Rectory, Cherington

Status: Awaiting decision. The Council had no objection.

16 October 2017, 17/04260/TCONR: Ash - dismantle and remove; Conifer - remove and dismantle. St Nicholas House, Cherington

Status: Decided: No objection

11 September, 17/03789/LBC: Internal Alterations. Coach House, Cherington Park, Cherington

Status: Decided: Application Permit

23 August 2017, 17/03489/TCONR: (2) Turkey Oak a. Remove 2 branches, b. Reduce height (3) 6 Flame Top Hornbeams, trim. Old School House, Cherington.

Status: Decided: No objection.

For further information please visit [www.cotswold.gov.uk](http://www.cotswold.gov.uk) and search on the Planning pages.

## Community Wellbeing Agents and Social Prescribers

Kevin Dower, project manager for the Gloucestershire Rural Community Council's Community Connectors Scheme, described its aim of supporting all residents over 16 years old, either by developing new services or by linking individuals or groups to existing activities that offer help and advice. They need local volunteers to assist them (who will be subject to training and DBS checks). The aims were set out in the October Villager (see Aileen Bendall's item and Avening PC minutes). See [www.grcc.org.uk](http://www.grcc.org.uk) or phone 01452 528491.

## Hospital Transport Service

County Cllr Hirst stated that The Lions and Community Connectors are to reinstate the hospital car service for Tetbury and surrounding area. Users will pay a charge and volunteer drivers will receive mileage.

## Parish Council meetings (NB venue)

The next Parish Council meeting will be held on **Tuesday 7th January 2017 at 6pm at Toad Hall, Trull Farm**. An agenda will be placed on the village notice board and on our website: [cheringtonpc.org.uk](http://cheringtonpc.org.uk).

All residents of the Parish are welcome to attend meetings; the agenda includes public participation time to enable you to raise any issues. The Parish Clerk can be contacted on 01453 832100 or via email at [cheringtonparishcouncil@yahoo.co.uk](mailto:cheringtonparishcouncil@yahoo.co.uk).



## Symptoms suitable for Osteopathic treatment:

Spinal pain (back & neck), Sciatica, Limb pain (arms & legs), Frozen shoulder, Sporting injuries, Headaches & Migraines, Stress related conditions, Antenatal care for pregnancy related problems, Neonatal care for unsettled babies.

### Also available at The White Practice:

- . Medical herbalism & allergy therapy
- . Cognitive behavioural therapy (CBT)
- . Acupuncture
- . Relationship, bereavement & sex therapy counselling

### ONLINE BOOKING AVAILABLE

[www.thewhitepractice.co.uk](http://www.thewhitepractice.co.uk)

14 Market Street, Nailsworth, Glos, GL6 0BX

**01453 832515**



## S Woodman Garden Services



General Gardening

Grass Cutting ~ Hedge Cutting

Tree Cutting ~ Fruit Tree Pruning

General Ground Clearance

Good Rates / O.A.P Discount

Please Call: Home: 01453 834744 Mobile: 07814206803



Manufacturers of purpose made  
joinery of all types

Tel: 01453 885075

Email [gkjoinery@googlemail.com](mailto:gkjoinery@googlemail.com) [www.gkjoinery.com](http://www.gkjoinery.com)

# Avening Parish Council



## Avening Parish Council Meeting 16 November 2017

The minutes of the meetings will be published shortly but some of the items discussed at the meeting are listed below:

### **New Parish Councillor Needed**

We are still keen to hear from anyone interested in becoming a Parish Councillor.

If you are interested or would like to find out more about what's involved please contact the clerk or Tony Slater, the Chair.

### **Adoption of Telephone Kiosk, Lawrence Road**

The Parish Council have applied to adopt the telephone kiosk in Lawrence Road, which was due to be decommissioned. We are planning to use it to house a second defibrillator for the village. We will arrange another familiarisation event early next year.

### **Dog Waste Bins**

Two new dog waste bins have been installed, one at the Top of Mays Lane, and the other at the top of Star Lane.

### **Roads**

Our County Councillor, Stephen Hirst, took details of some long standing issues and will help progress them

### **Christmas Tree Lighting Ceremony**

A reminder that the ceremony will take place on Saturday 2 December 2017 at 4.30 pm followed by refreshments at the Queen Matilda.

### **Planning Applications**

17/04295 Full Application for Change of use of an agricultural barn into equestrian use, including stables and installation of a horse walker at Longmans Barn Farm Avening Tetbury, Gloucestershire GL8 8NH

No objections raised.

17/04280 Full Application for Construction of a 30 metre x 60 metre riding arena at Longmans Barn, Farm Avening Tetbury Gloucestershire GL8 8NH

No objections raised.

17/04067 Full Application for Erection of swimming pool extension and separate stables at Pimbury Park Tetbury Gloucestershire GL8 8SF

No objections raised.

### Next Meeting

The next meeting will be held on **Thursday 21 December** 2017 7.30pm in the Memorial Hall Agendas will be displayed on the village notice boards. Minutes of our meetings are available to view at [www.avening-pc.gov.uk](http://www.avening-pc.gov.uk)

The Parish Clerk can be contacted via email: [parishclerk@avening-pc.gov.uk](mailto:parishclerk@avening-pc.gov.uk) or by phone: 01452 770792 07866 297098 (mobile)

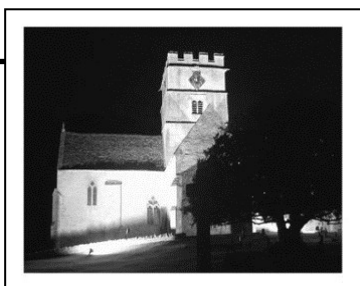
## Letter to the Editors

Dear Editors,

Would you be kind enough to print this website in The Villager as a reminder to all those inconsiderate dog owners in the area who do not think the law applies to them: <https://www.stroud.gov.uk/environment/environmental-health/animal-welfare/dog-warden-service/dog-fouling-facts-and-myths>

It is not ok to leave excrement on grass verges or public footpaths just because it is not in town. We have narrow lanes and walkers have to step onto the verges to avoid traffic.

*Graham and Sylvia Sexton*



### Church Floodlighting

The church will be floodlit on

22nd December

in memory of **Eric Roberts**

If you would like to have this in memory of a loved one, or to celebrate a special event, contact

**Paul Brown 01453 835 983.**

The cost is £10 for 2 hours

# Church Services for Advent, Christmas and Epiphany

December	Holy Cross, Avening	St Nicholas, Cherington
3rd	11.00am Advent Eucharist 6.00pm Advent Carols at Gloucester Cathedral	9.30am Advent Service 6.00pm Advent Carols at Gloucester Cathedral
10th	11.00am Eucharist	No service - Christingle Service at 5.00pm on Saturday 9 <sup>th</sup>
17th	8.00am Eucharist 7.00pm Carol Service	5.00pm Carol Service
24th	8.00am Eucharist 4.00pm Nativity Service 11.30pm Midnight Mass	10.00pm Midnight Mass
25th	11.00am Christmas Eucharist	10.00 Christmas Service
31st	11.00am Eucharist	9.30am Eucharist
<b>January</b>		
7th	11.00am Epiphany Eucharist	9.30am Epiphany Eucharist
14th	5.00pm Evensong	No service
21st	11.00am Eucharist	9.30am Eucharist
28th	8.00am Eucharist	9.30am Morning Prayer

Over Christmas families are especially welcome to the:

- Nativity Service on Christmas Eve. The collection at this service will be shared with Winston's Wish, the Cheltenham based charity that does so much to support bereaved children.
- Christmas morning services when youngsters may like to bring a new Christmas present to show us.

On 7th January we celebrate Epiphany – that is a word used for the arrival of the Magi (or wise men as they are often called) with their unusual gifts.

On 4th February we celebrate Candlemas – come with your Baptism candle and we will light them to remember our Baptisms.

If you are not familiar with the term 'Eucharist' it stems from the Greek word for 'thanksgiving' and is just another name for Holy Communion.



# Queen Matilda Tavern and Rooms



**Real Ale Real Food Real Fires**  
Open Tuesday to Sunday

**BED AND BREAKFAST ROOMS NOW AVAILABLE**

Graham's Quiz night the last Thursday every month  
Sunday lunches available (roasts and regular menu from 12 noon)  
'Fishy Thursday': Two for one fish and chips

**Live music 'Malarki' for some Christmas fun - 16th December.**

Star Lane, Avening, Glos, GL8 8NT Telephone 01453 350305

Website: [queenmatildatavern.co.uk](http://queenmatildatavern.co.uk)

*A MERRY CHRISTMAS TO ALL*

## Squeaky Clean

- \* Regular Cleans
- \* One off Services
- \* House Move Cleans
- \* Spring Cleans
- \* House/Pet Sitting
- \* Assisted Outings
- \* Assisted Appointments
- \* Companionship
- \* Errands
- \* Cooking
- \* Key Collect/Drop



# Louise

**Tel: 0782 595 1852**

**eMail: [info.squeakyclean@gmail.com](mailto:info.squeakyclean@gmail.com)**

**CRB Certificate and Public Liability Insurance**

# Dates For Your Diary

Friday 1st December	FOAS Christmas Market	Memorial Hall Avening	2.30-4.30pm
Saturday 2nd December	Playgroup Christmas Bazaar	Memorial Hall Avening	2.00pm
Saturday 2nd December	Avening Christmas Tree Lighting	Junction of Point Road and High Street	4.30pm
Saturday 9th December	Christingle Service	St. Nicholas Church Cherington	5.00pm
Saturday 9th December	Cherington Christmas Tree Lighting	The Green, Cherington	5.45pm
Sunday 10th December	Children's Christmas Party	Holy Cross Church Avening	3.00pm
Sunday 10th December	Father Christmas comes to Avening	Around the Village	5.00pm onwards
Sunday 17th December	Service of Nine Lessons and Carols	Holy Cross Church Avening	7.00pm
Thursday 21st December	Avening Parish Council Meeting	Memorial Hall Avening	7.30pm
Thursday 21st December	Carol Singing	Queen Matilda/ The Bell	8.00pm/ 9.00pm
Sunday 24th December	Nativity Service	Holy Cross Church Avening	4.00pm
Sunday 24th December	Midnight Mass	Holy Cross Church Avening	11.30pm
Tuesday 7th January	Cherington Parish Council Meeting	Cherington Village Hall	6.00pm

# Time for a Safety Check?

**FREE**  
**37 point**  
visual health check

Prepare your vehicle for the season ahead with our **FREE 37 point visual health check** – for total peace of mind.

The check includes:

- Visual check of lights & wipers
- Inspection of wheels & tyres
- Visual check of brakes & exhaust system
- Visual checks under vehicle including steering & suspension

Included in our visual health check is a full tyre check including all depths, pressure and conditions.

## Did you know?

As winter temperatures drop below 7°C, driving becomes more perilous. Wet roads, cold temperatures, snow and ice can all contribute to potentially dangerous slip ups such as loss of grip, aquaplaning and longer stopping distances. With the prospect of such hazardous conditions it's critical that your tyres are properly maintained and fit for the winter ahead.

As the only point of contact with the road surface, your safety depends on it.



for free, friendly, local advice, pop in or give us a call.

**01453 832871**

[info@service-tech.org.uk](mailto:info@service-tech.org.uk)  
[www.service-tech.org.uk](http://www.service-tech.org.uk)



Inchbrook Trading Estate, (A46) Bath Road, Nailsworth, Stroud, GL5 5EY

# Lydia @ Brookes Hair & Beauty

10 High Street  
Minchinhampton  
Glos  
GL6 9BN  
01453 883076

[brookeshairandbeauty@gmail.com](mailto:brookeshairandbeauty@gmail.com)



## when you look good, you feel good!

Hi I'm Lydia a fully qualified level 3 beautician with experience of working within a busy salon.

I am located within Brookes hair and beauty, High street, Minchinhampton.

We are a unisex salon covering a range of wonderful treatments from Manicures to (Sienna X) spray tans, Facials to massage, waxing to piercing plus much, much more!

Please look at our website for more information  
[www.brookeshairandbeauty.co.uk](http://www.brookeshairandbeauty.co.uk)

### Beauty Treatments

Waxing  
Threading  
Tinting  
Manicures  
Pedicures  
Gel colour

### Massage Treatments

Swedish  
Aromatherapy  
Hot stone  
Indian head

## The Bell at Avening

a traditional British pub serving a great selection of real ales and food



Little  
**INDIA**  
at THE BELL

Little India @ The Bell, serving food from Tues-Sun 5pm-11pm  
Call **01453 836453** for great food to eat in or takeaway  
Visit our website for full menu

### OPENING TIMES:

MON - FRI: 5:30PM - CLOSE  
SAT & SUN: ALL DAY FROM 12 NOON

LIVE MUSIC EVERY MONTH

FIRST SATURDAY OF EVERY MONTH IS  
QUIZ NIGHT

Call us on: **01453 836422** or e-mail us at [info@agpubs.co.uk](mailto:info@agpubs.co.uk)

[www.thebellavening.co.uk](http://www.thebellavening.co.uk)

Find us on Facebook  
by simply searching  
"Bell at Avening"

