

The Villager

A Magazine for Avening, Cherington
and Nags Head

May 2016

Happy 90th Birthday,
Your Majesty!

editors@acvillager.co.uk

THE WEIGHBRIDGE INN

The home of the famous '2in1' pie

Full menu served all day every day



Opening Times:

Mon to Sat - Midday
to 11.00pm

Sun – Midday to
10.30pm

Longfords
Minchinhampton
GL6 9AL

Tel: **01453 832520**

'bake at home' 2in1 pies

available to collect now!



**UNDER NEW OWNERSHIP BUT STILL THE
HOME OF THE 2in1 PIES**

May 2016

Summer is fast approaching-always such a great time to be in Avening and Cherington, even if, at the time of writing this, you could be forgiven for thinking it was still the middle of winter, judging by the single digit temperatures! but the trees are coming out fast and the flowers will follow quickly – and the next thing you know, it will be time for the Avening Church Fete and the Cherington Show, not forgetting the W.I. Summer outing and lots of school and playgroup summer excitement.

This year we have an extra event. Following on from the successful and fun Beacon Lighting events in both villages on Thursday 21st April, we will continue the celebrations of the 90th birthday of her Majesty Queen Elizabeth II with a tea party on 5th June in Avening and a similar event planned in Cherington. It promises to be a bumper summer, and of course the sun will shine!

Don't forget to bring your cameras to these and any other events. At the Villager we love receiving your photos and your reports of the excitement, so don't forget us.

The Villager Editors

The Villager Magazine

Editors	editors@acvillager.co.uk Jane Archer, Frances Conway and Derrick Pierce. 07812 137161 (Jane) 01453 832177 (Frances) 01453 835090 (Derrick)
Advertising	editors@acvillager.co.uk, Gwyneth Simpson 01453 836556
Deliveries	Cas Boddam-Whetham 01453 834834
Deadline	18th of each month

Photographs in The Villager Magazine

Many thanks to **Tony Slater** for our cover photo.

If you have a photo of Avening or Cherington which you would like to share with us, please feel free to send it to us. You never know, it might turn up on the front cover...!

editors@acvillager.co.uk



... a date for your diary ...

CHERINGTON SHOW

Sunday 24th July 2016

Starting 2.00 pm

...throughout the village ...

stalls, kids' games, traditional crafts, flower arranging competitions, vegetable and handicrafts too, cookery, photography, art, raffle, teas and homemade cakes, Avening Silver Band, Morris Dancers ...

FUN DOG SHOW AT 3.00 pm

Car Parking £1

AVENING CHURCH FETE & FUN DOG SHOW

Sunday 12th June at 2.00pm.

Famous Duck races Raffle

Bottle tombola Delicious Cakes

Teas The Elegant Sausage

Childrens Area Brick-A-Brac

& Much more

Including the return this year of the mini traction engine rides

Arts and crafts stalls in the Church

For details of stalls and offers of help contact
Stephanie email stephanie2432@hotmail.co.uk

To book a table for arts and crafts contact Doreen
01453 835090 or email derrick.pierce@hotmail.com



What's On In Avening and Cherington

Please let us know if we have forgotten any regular event or if there is something you would like to have included here.

Event	Day	Time	Where	Contact
Line Dancing	Monday	7.30 - 10.00pm	Social Club	Mel 01453 833760
Flamenco Dancing	Monday (excluding school and bank holidays)	7.00 - 8.00pm	Memorial Hall	Lina Wirths 07417451815
Cherington PC	4th Tuesday Bi-monthly	6.30pm	Village Hall	Frances 01453767384
Youth Club	Tuesday	6.15 - 7.45pm	Memorial Hall	Cassie 01453 834182
Bell Ringing	Tuesday	7.30pm - 9.00pm	Church Bell Tower	Steve 07807 700004
Line Dancing	Tuesday	7.45 - 10.30pm	Social Club	Mel 01453 833760
Baby and Toddler Group	Wednesday	1.30 - 3.00pm	Avening Playgroup	01453 625983
Yoga	Wednesday	7.30pm - 9.00pm	Memorial Hall	Elles 0781 555 2952
Over 60s Lunch Club	1st Wednesday each month	12.30pm	Social Club	Christine 01453 833246
Dial-a-Ride	Thursday	9.30am		Liz Truman 01666 502514
WI	2nd Thursday each month	7.30pm	Memorial Hall	Maisie 01453 834679
Avening PC	3rd Thursday each month	7.30pm	Memorial Hall	Caroline 01285 380041
Avening Angels Choir	Sunday	4-30pm	Various	Derrick 01453 835090

Contacts for the Villages

A and C Cricket Club	Derrick Ind	01453 835752
Avening Angels	Derrick Pierce	01453 835090
Avening Art Group	Mick Williamson	01453 836318
Avening Oil Coordinator	Frances Lindley	01453 835115
Avening History Project	Fred Venning	01285 850624
Avening & Cherington Rector	Rev. Poppy Hughes	01666 502333
Avening and Cherington Churches Reader	Derrick Pierce	01453 835090
Avening Church Churchwardens	Stephanie Hamilton Stephen Uzzell	01453 834910 07807 700004
Avening Church Flower Team	Doreen Pierce	01453 835090
Avening Church Organist	Colin Chambers	01666 880026
Avening Church PCC Treasurer	Peter Best	01453 835287
Avening Parish Council Clerk	Caroline Braidwood	01285 380041
Avening Book Club	Kristiane Worsdell	01453 836515
Avening Film Club	Kristiane Worsdell	01453 836515
Avening Playgroup	Debbie Brown	01453 832695
Avening Primary School	Jane Rushton	01453 833191
Avening Silver Band	Jim Hill	01453 834438
Avening Bell Tower Captain	Steve Uzzell	07807 700004
Avening Village Agent	Aileen Bendall	07810-630156
Avening Youth Club	Cassie Vickery	01453 834182

Avening Social Club	Derrick Ind	01453 835752
Avening Memorial Hall		07583 073604
Cherington Village Hall	Wendy Eldridge	01285 841327
Cherington Parish Council Clerk	Frances Ashfield	01453 767384
Cherington Church Churchwardens	Roger Gegg John Bate-Williams	01453 834805 01666 503544
Cherington Church Flower Team	Elizabeth Workman	01285 841294
Cherington Church Organist	Elizabeth Workman	01285 841294
Cherington Church PCC Secretary	Elizabeth Workman	01285 841294
Cherington Church Sacristan	Beryl Milsom	01285 841248
Cherington Church PCC Treasurer	Paul Cable	cabes50@yahoo.co.uk
Cotswold District Councillor	Jim Parsons	01453 836596
Friends of Avening School	Lucie Hawkins	01453 833191
Over 60s Lunch Club	Christine Howell	01453 833246
Stroud Hospital	Reception	0300 421 8080
Tetbury Hospital		01666 502336
Women's Institute	Gwyneth Simpson	01453 836556

VILLAGE & AREA WEB SITES

Avening Parish Council WWW. avening-pc.gov

Avening Church www.aveningchurch.info

Cherington Village www.cheringtonvillage.co.uk

Cotswold District Council WWW. Cotswold.gov.uk

Letter From Avening Parish Council Leader



The Annual Parish Meeting is fast approaching, and it will be a great opportunity for everyone to catch up with many of the organisations and friends in the village, and find out what they are doing. As well as your parish, district, and county councillors being on hand, I can confirm the Avening Angels will be opening the proceedings, and the youth club will be demonstrating the fantastic new audio visual facilities in the hall. The new hall management committee will be represented, and if all goes to plan, we should have members of the new Playing Field committee to talk about ideas for improvements of the facilities. The WI will once again be providing some light refreshments.

I will have the pleasure of announcing the Villager of the Year award, and also introducing our new Parish Clerk. I'll make sure the formal announcements are kept to a minimum, so there will be lots of mingling time. Kick-off is at 10.30 on Saturday 7th May, so do try to get down to the hall

For everyone that followed our self-build diary, Avening will soon be on the map when our journey is chronicled on Channel 4 – we have been advised that we will be first in the new series of Building the Dream, and the provisional date for screening is set for 31st May.

Having finished this three-year design and build journey, and no longer working away from home, I have been gradually reintegrating into society and getting back to something like a normal life! I have started to take photos again of things other than the house, and have put a couple of lovely local scenes on the Avening Facebook page, which have been well received. Just this week, I have been able to walk to the cinema in the Social Club to join upwards of 40 friends and neighbours to watch the touching and amusing 'Lady in a Van' – the monthly cinema club is well into its 3rd year, and is definitely worth a visit (details and dates are always on the Avening website and Facebook pages, and in The Villager). I have also had the honour of lighting the beacon to celebrate the Queen's 90th birthday. With the summer season of events in Avening and Cherington still to look forward to, I am reminded once again how lucky I am to live in such a thriving and beautiful area.

***Tony Slater, Chairman,
Avening Parish Council***

Letter from the Parish Priest



April 2016 has been a memorable month for our Benefice!

We had a wonderful Benefice service on Sunday 10th April at St Marys' in Tetbury, when Bishop Rachel came to bless the new glass door at the entrance to the church. Around 250 people came to meet the new Bishop of Gloucester, drawn from our family of churches across Avening, Cherington Beverston, Shipton Moyne, Long Newton and Tetbury.

Bishop Rachel wrote to us afterwards to say: "It was so wonderful to be with you all last week - thank you for such a warm welcome ... I came home very inspired and encouraged by our worship together, conversations with people, and the strong commitment to being a transforming presence."

Coming up in May, we will be celebrating Pentecost on Sunday 15th May. This is the time we mark the coming of the Holy Spirit, to give us the courage and heart to do all God asks of us. This year it feels so right that this Sunday also marks the beginning of Christian Aid Week (15th-21st May), which unites over 20,000 churches in raising money to fight global poverty.

Again my usual invitation to everyone ... do join us for our regular Sunday service at 9.30am in Cherington or 11am in Avening. We are delighted to that the Revds Richard and Margaret Maslen will be taking many of our services over the coming weeks and our grateful thanks to them for all they are doing.

We look forward to seeing you soon.

With love and prayers,

Poppy

***The Revd Poppy Hughes
Rector***

***The Benefices of Avening with Cherington, Tetbury, Beverston, Long
Newton and Shipton Moyne***

Having Fun Making Things: A Workshop for Children



16th July 2016: 2pm – 4pm
Cherington Village Hall

Children love making things and also have a wonderful sense of achievement when they see what they have made. Cherington Show has for over 70 years had a section in its flower, vegetable, and craft show for children's work – in fact over 20 competitions are for children only. We love seeing how creative they are and each year we try and change the competitions to make them more interesting.

But we also know how busy life is at school and at home so we thought we would run again our craft workshop on Saturday 16th July in Cherington Village Hall for children to come along and make some of these items which will then be entered into the Cherington Show on the 24th July 2016.

Age Group :- 5years to 11 yrs (but definitely yes to under 5's if accompanied by an adult). All materials are provided. There will be a very small cost to cover refreshments and materials of £2.00.

Call Christine Williams on 01285 841337 or e-mail Kate at kategegg@hotmail.co.uk

Workshop is open to all children, not just children from Cherington.

In our horticultural section we have a section for our young gardeners too ! We know that children love growing things We can mail you a competition schedule – that misshapen vegetable, sunflower head and more. We would love to have more entries.

**FRIENDS OF AVENING SCHOOL
PRESENT**

**THE
GREY
EARLS**



**SATURDAY 14 MAY - 7:30PM
AVENING VILLAGE HALL**

**TICKETS £10 OR TWO FOR £15
TICKET PRICE INCLUDES A PLOUGHMANS SUPPER**

For more information visit facebook.com/foas or email admin@avening.gloucs.sch.uk





Avening School

Get Ready, Get Steady.....Go!



Summer term is in full swing now and each class is enjoying a brand new term topic. For the Kestrels (Y1/2), their focus on ‘fantastic journeys’ began on the first week back after Easter break when Ms McKenzie and Mrs Wilkinson transformed into air hostesses for the day and escorted their class to India and then on

to the Arctic, all in one morning! Later on this term, the class will be embarking on a journey of a different kind when they visit Brunel’s SS Great Britain in Bristol. Meanwhile, the Hawks Class (Y3/4) are exploring Ancient Greece for their class topic ‘Mighty Olympians’ and linking it with this year’s Olympic Games taking place in Rio this Summer. They will also be paying a visit to Cheltenham’s Science Festival later on in the term. The Owls (Y5/6) are discovering how the human body works in their topic – ‘Doctor Doctor’ which has already found them running around the school garden acting out the journey of blood around the body and drawing around each other to make life size diagrams of the circulatory system.

There’s even more activity happening with the arrival of a new array of after school clubs. Children can choose from a wide selection of activities from pottery (a brand new club) to gardening to outdoor athletics. The Hawks class have also got the opportunity to take part in forest school club while the rest of the school also gets designated sessions during the school term. The KS2 children have been given an amazing opportunity to take part in ‘a chance to shine’ cricket club run by the Stroud District Cricket Association.

Looking ahead, there is so much happening over the next few months. Our K’Nex challenge finalists in y5/6 will be taking part in the county final in April. STEM (science, technology, engineering and maths) is in focus for our Owls class in May, when they will take part in a workshop designed around problem-solving

with a humanitarian aid theme. The winners will be invited to the Royal International Air Tattoo in July to present their design to a panel of judges. There is also the school talent show; our annual musical soiree; sports day; this year's Owls' residential trip to Minehead Adventure Centre; and many sports tournaments to look forward to. Watch this space for more information on all of this!

FOAS have also got plenty planned for the summer term. In addition to the annual school summer fete, the committee are arranging a live music event with the fantastic 'Grey Earls' who will perform music from the 1950's through to current day on Saturday 14th May at Avening Memorial Hall. Tickets are £10 per person or £15 for two and will include a ploughman's supper. There will also be a bar available on the night. Tickets must be purchased in advance. Please contact the school office if you would like to book tickets for this event which promises to be an evening of fabulous music, great fun and hopefully plenty of dancing!

Also planned, for June is the never seen before 'Avening Bear Hunt'. On Saturday 18th June, there will be an amazing trail of 'bears' around the village for you and your family to find. Among the bear folk we expect you to find will be Bear Grylls, Teddy Wogan, Beary Manilow and many, many more! There will be tea and cake on sale in the school garden throughout the afternoon along with a teddy bears picnic. If you would be interested in hosting a 'bear' in your garden, please contact the school office.

For further information about our happy, busy place of learning, please see our school website www.avening.gloucs.sch.uk or contact our school office 01453 833191.

Alex Adcock

AVENING ANNUAL VILLAGE MEETING

The Annual Village Meeting this year will showcase all of the improvements at the Memorial Hall. Come and see how to make the most of the new audio visual equipment for your event or meeting and meet all of the Village groups at the same time.

Join us for Coffee at 10.30 am in the Memorial Hall on
Saturday, 7 May.

A Thought for Easter and Springtime

I was washing up.....staring out of my window.....when there it was!

A blazing golden Cross seemingly hanging from the bare branches of the tree. A miracle of light created by the low sun in the winter sky. A miracle that seemed to reassure me that Christ is near.

This is what I think prayer is.....an awareness that Christ is near. It is so easy to feel daunted by the thought of prayer.....feeling there is a need for 'Churchy' words or 'religious' phrases.....when all that is needed, is a moment of stillness and a sense of wonder.

I see the image of the Cross all aroundin the bars of a window, a shape in the clouds, in the branches of a tree or a shadow on the grass. Even in the crossing of two vapour trails high in the sky, I see the image of the Cross with the message of Hope and Divine Love and my heart lifts.

For me this is prayer. I am reminded of what Jesus said: "Do not be afraid for I will be with you until the end"

Celia Carter

Baby and Toddler Group!

Wednesday's 1:30-3:00pm

At Avening Playgroup, The Sunground Avening, GLOS GL8 8NW

For more information phone

01453 625983 or email

aveningplaygroup@gmail.com (term time only)

Alternatively call 07867 855512

EVERYONE WELCOME

SPANISH

Native Spanish teacher living in Avening

GCSE, A level course, one-to-one, group, Skype

To brush up your grammar, improve your conversational skills or you need specific exam revision, I have a class to suit your needs.

Please contact Raúl 07909 179676 / raul.an@yahoo.es



Thanks to the support of Tetbury Town Council, from the 6 April, local charity Citizens Advice Cotswold District will be providing advice from the Town Council offices on Wednesday

mornings from 9:30 -12.

Citizens Advice provide free, confidential information and advice to resolve people's problems. The most common enquires are money, family, employment, housing or welfare benefit problems. Citizens Advice service is free, confidential, independent and non-judgemental.

Citizens Advice provide online advice including fact sheets, template letters and budgeting tools. <http://www.citizensadvice-stroudandcotswold.org.uk/> . You can also ring Citizens Advice

NAILSWORTH ACCOUNTANCY

ACCOUNTANCY SERVICES FOR SELF EMPLOYED AND LIMITED COMPANIES

Self-Assessment Tax Returns
Accounts Preparation For Small Businesses
Company Accounts
Business Start Ups & Company Formations
VAT Returns and Tax Planning

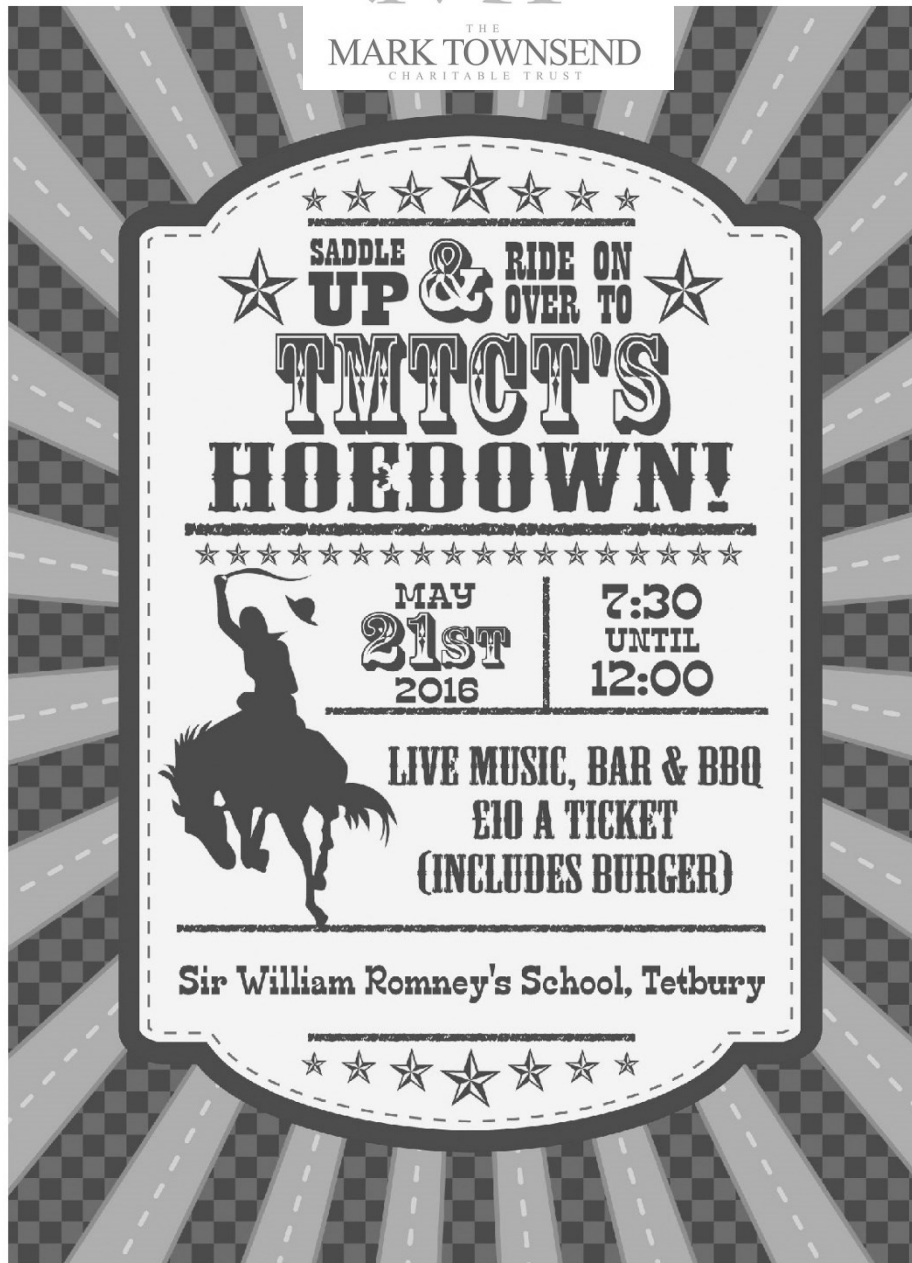
For a competitive quote telephone Emma

01453 835050

TOWN HALL NAILSWORTH



THE
MARK TOWNSEND
CHARITABLE TRUST



For those of you wondering, a Hoedown is an American Barn Dance. We have a live band with a caller, who will give full instructions on how to do the dance, we have the Jesse Smith big pan for our BBQ (one burger included in the ticket price) and a bar with real Ale from Uley Brewery. We'll also have a raffle with great prizes and an auction for some great lots. You can get tickets from our Facebook page or our committee members, Bomber, Kate, Arron, Jayme and Laura Townsend, Brian Powell, Mike Stone, Dan Sharpe and Shane Ludlow. Follow us on: www.facebook.com/themarktownsendcharitabletrust
themarktownsendcharitabletrust.wordpress.com

If you, or someone you know, needs our help, then drop us a line at the address below or message us on Facebook or the website. We will consider requests for anything that might be needed from petrol costs to school trips from parking costs to counselling.

The Mark Townsend Charity Trust c/o Strada View, High Street, Avening, Tetbury, Gloucs, GL8 8NF Tel: 01453 832799

Howdenjones 'No Halls Barred 2016'



Kate Howden and Paul Jones gave us an evening to remember in Cherington Village Hall on 6th April. It was indeed a gem of an evening.

They live on a house boat and get inspiration for their songs from the life that revolves around them, some funny, some sad, others where the audience joined in with gusto. With beautiful harmony, skilled musicianship and all their instruments they have no need for music, it all comes from the heart and expertise.

We thought we would have a bring and share supper - this turned out to be a banquet with an amazing array of delicious food. It was so good to see the village people brought together with other visitors as well. Everyone left with big smiles after such a fabulous night.

Wendy Eldridge



**Manufacturers of purpose made
joinery of all types**

Tel: 01453 885075

Email gkjoinery@googlemail.com www.gkjoinery.com

Fun Quiz in Aid of Cherington Village Hall

ALL THE ANSWERS ARE WILD FLOWERS. NO LATIN NAMES.

- | | |
|--|-------------------------|
| 1. Put a flower after a swamp. (5-8) | <i>Marsh Marigold</i> |
| 2. An animal comes before a colour. (3-4.) | <i>Dog Rose</i> |
| 3. A cloak for a woman. (6-6) | <i>Ladies Mantle</i> |
| 4. Torment + a letter of the alphabet (6)..... | <i>Teasel</i> |
| 5. A substitute for coffee. (7) | <i>Chicory</i> |
| 6. A worker puts his money here (9.5) | <i>Shepherds purse</i> |
| 7. Gypsies plus happiness. (10-3) | <i>Traveller's joy</i> |
| 8 Sounds like an insect plus an award. (6) | <i>Betony</i> |
| 9. Hurry to find water here. (9)..... | <i>Speedwell</i> |
| 10. Put a consonant before a romantic person. (6) | <i>Clover</i> |
| 11. Not wasteful minus a question. (6) | <i>Thrift</i> |
| 12. A Roman God belongs to this animal. (4.7) . | <i>Dog's Mercury</i> |
| 13. A card game + a kind of lizard. (10) | <i>Snapdragon</i> |
| 14. Always remember. (6-2-3)..... | <i>Forget me not</i> |
| 15. Several blades. (8)..... | <i>Cleavers</i> |
| 16. A tree plus a cooking ingredient. (10)..... | <i>Willowherb</i> |
| 17. To tie up with something in the wrong place. (8) | <i>Bindweed</i> |
| 18. Some hair after to partly burn. (8)..... | <i>Charlock</i> |
| 19. Vulgar + small animal + cannabis. (6.9.)..... | <i>Common chickweed</i> |
| 20. Make yourself better. (8) | <i>Selfheal</i> |

This quiz raised a wonderful profit of £311. A very warm thank you to all who made this possible, by buying and helping to sell the quizzes. I received 11 all correct entries, so an independent draw was made and the winner was **P. Golding**.

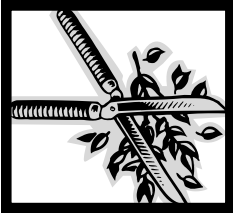
Beryl Milsom



**Fred Stevens
Funeral Directors**

We give immediate attention – 24 hours
Traditional and contemporary styled
funerals arranged
Individual, flexible approach
Well established, family-owned company with highly
experienced staff

Newmarket Road, Nailsworth, Gloucestershire GL6 0DQ
telephone 01453 832188
email@fredstevens.co.uk www.fredstevens.co.uk



**S Woodman
Garden Services**

**General Gardening
Grass Cutting ~ Hedge Cutting
Tree Cutting ~ Fruit Tree Pruning
General Ground Clearance**

**dental
practice**

**townes
townes
associates**

Family Dentistry You Can Rely On



www.familysmile.co.uk

Satisfaction rating:
more than 99%

100% of patients
asked would
recommend
us to family
& friends

Quote 'Villager' for a 50% discount on a full New Patient Examination with x-rays for just £39.50. Telephone us on 01453 827474

Do you have a mole problem?

With over 30 years experience in traditional mole control I can effectively, discreetly and humanely remove the culprit(s)! No gas, chemicals or poisons used and completely safe to children and pets.

No Mole – No Fee!

07766 132934 (Days) 01285 770968 (Evenings)

www.gbstateservices.com

Member of the British Traditional Molecatchers Register. Member of the Guild of British Molecatchers
BPCA/RSPH level 2 certificate in pest control. Fully insured and references available

Avening W.I.

In the last report I mentioned that our previous arranged walk had been thwarted by the weather. Unfortunately this is happening again as despite a good day forecast the meadow at Cricklade has been closed due to flooding, so no fritillaries this year. We will be walking instead in the same area along the route of the Thames and Severn Canal through South Cerney so maybe we will spot a stray fritillary.

The County skittles competition has started and Avening is through to the next round having beaten Ampney Crucis W.I. Lets hope we can progress to the final.

Our speaker this month was Shawn McCormack who is a member of the 82 strong Queen's Bodyguard of the Yeoman of the Guard. The Guard was formed in 1485 by Henry VII at the commencement of his reign and is not to be confused with the Yeoman Warders of the Tower of London even though the uniform is very similar. The members of the Bodyguard attend many Royal functions including the opening of Parliament, the Garter Parade, investitures and Royal Garden Parties. It is selected from members of the armed forces and members receive the grand sum of £100 per year + expenses so it is for the honour only that they join. Shawn brought with him a uniform including a heavily embroidered tunic weighing 16 lbs. Even his hat weighed 3lbs which on a hot day would be difficult to wear. He amused our members by showing his stockings and suspenders. He said it was quite difficult to buy suspender belts these days!

It was good to see some visitors to our meeting who are always welcome. Our next speaker at our May meeting will be Melissa from the Woefulane Dairy who is talking about cheese making.

The visit to the Masjidenoor Mosque in Gloucester was most interesting. The Imam and his assistants made us most welcome and gave us a talk about the founding of the Mosque and about Islam. They set us a brief quiz which proved how little we know about the faith. They answered our searching questions and made it quite clear that the aims of Islam have nothing to do with the terrorism which is blighting the world currently.

Our annual summer coach outing will be on 23rd June (leaving you plenty of time to vote in the Referendum) to Dyffryn House and Gardens just west of Cardiff. The gardens are renowned as being one of the most beautiful in the United Kingdom. Villagers and friends will be very welcome to join us as usual. We will be leaving near Avening School at 9.15 am and returning around 6 pm. The cost will be £15 each + entry to the gardens (about £8). National Trust members have free entry so do not forget your membership cards. Please ring Sue Osborne on 01453 839327 to book your place.

Gwyneth Simpson

A great walk. A great cause.



Because a picture is worth a thousand words! web: www.thousandwordmedia.com email: info@thousandwordmedia.com tel: 07717 871565 or 07775 556610

This year's Solstice Walk will be on Friday June 17th, with the option of 5km or 10km walks on Minchinhampton Common, plus music, children's entertainment, a barbecue and a bar. All money raised will support Longfield's amazing care for people in Gloucestershire with life-limiting illness and the

walks start at their building in Burleigh Lane from 6pm. Entry fees are £18 for an adult and £7.50 per child (£15 and £5 before May 6th) but if you can fundraise £150 or more, you will walk for free.

So register today at www.longfield.org.uk/solstice2016 or, if you need to know more, call 01453 886868 or e-mail events@longfield.org.uk.



**plumbing
and heating**

YOUR LOCAL EXPERT

**call today
01666
503632**



**Design and installation of efficient gas
and oil fired heating systems**

**Boiler replacement and system
upgrade including power flushing**

Oil and gas fired boiler servicing

**Complete bathroom design
and installation including adaptations for
the elderly**

**Hard water treatment &
drinking water filters**

Leadwork & Fibreglass Roofing

Alderton 4, Priory Park, Priory Industrial Estate,
London Road, Tetbury, GL8 8HZ

www.indplumbingandheating.co.uk

Celebrating the Queen's 90th Birthday on 21st April,



Cherington's beacon got going well.....



...but Avening's one took a little more coaxing!



Many thanks to Mandy and Tony Slater, Henry Arden and Jane Archer for these photos.



Running up to watch the fire-lighting - though some of us preferred to stay below and eat cake, listening to the two Jims



Got there in the end!

Anyone For Tennis?

Minchinhampton Tennis Club are taking part in the LTA's Great British Tennis Weekend by offering newcomers free tennis on Saturday 14th May, from 2 to 5pm. Everything will be free: equipment coaching, refreshments, and for those who join on the day, free membership until July. Our subscription rates are very reasonable; for example, students and juniors would only have to pay £11 for the remainder of the year.

Those wishing to attend can book on the LTA's Greatbritishtennisweekend.com, or simply turn up on the day. Our website is www.clubspark.lta.org.uk/minchinhamptontennisclub.

Roger Lindley, Club Chairman



Cas Boddam-Whetham. MCSP RCT
Chartered Physiotherapist
Craniosacral Therapist

21 Nags Head Lane, Avening, Glos GL8 8NZ

01453 834 834

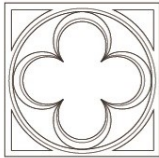
Web page—www.casbw.co.uk

Member of the Organisation of Chartered Physiotherapists
in Private Practice

Registered with the Health Profession Council
and all major medical insurance companies

For treatment, advice or a friendly chat about your problem.

Bidmead & Co.
craftsmen in natural stone



Bidmead & Co. are an accomplished team of natural stone construction and restoration specialists delivering time honoured skills with energy and enthusiasm across the Cotswolds

Architectural Stonemasonry
Restoration, Conservation & New Build
Dry Stone Walling
Landscaping

www.bidmeadstone.co.uk

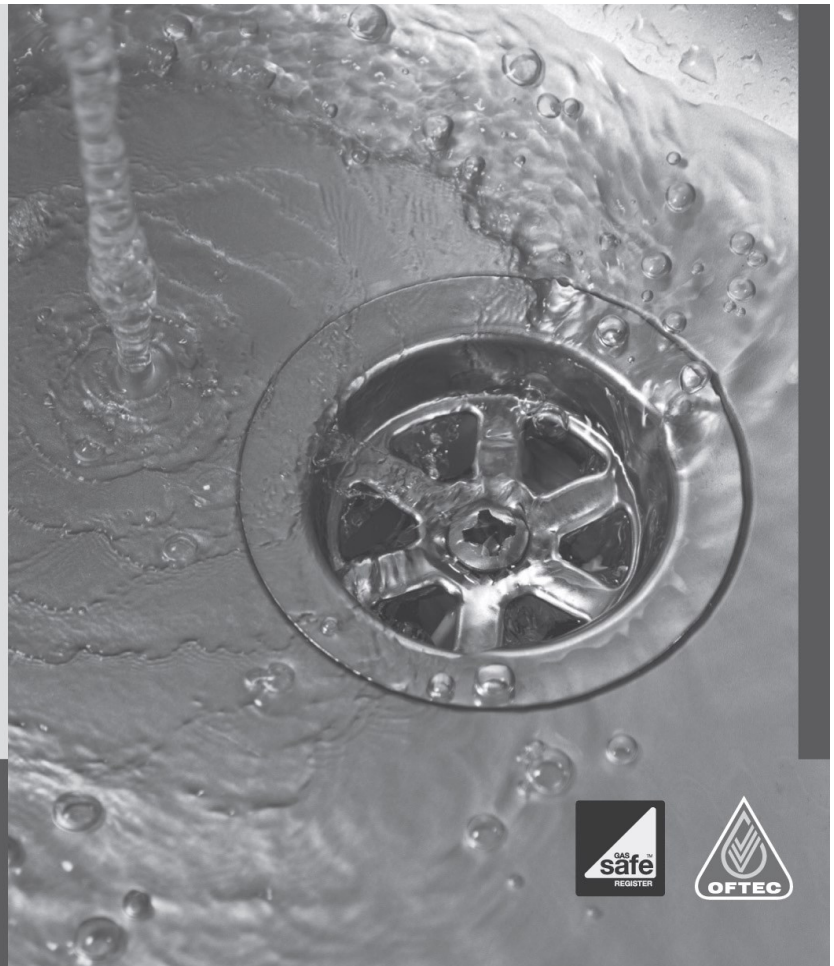
M. 07800 560448 T. 01453 882648



**Plumbing
& Heating**
(Cotswold) Ltd

- Oftec and Gas safe registered
- Boiler replacements
- New build and renovations
- Heating updates and alterations
- Underfloor heating
- Bathrooms
- Water softeners
- Over 35 yrs experience
- Tetbury based

Clive Alley t: 07584414624
Scott Wilkins t: 07717750247
e: scott@awplumb.co.uk
www.awplumb.co.uk





Elsie's FGR Experience

On the 2nd of April FGR played against Wrexham who brought along 568 fans, filling the whole of the away stand. When the players came on Forest Green fans released hundreds of green balloons which floated across the whole pitch even when they started to play, so they could have been playing with a balloon instead of a football!

When the game started we had a couple of corners but no goals resulted. Kurtis Guthrie and Elliot Frear were playing really well trying to keep possession of the football away from the Wrexham players! After that, FGR creating chances to score here, there and everywhere but just couldn't hit it into the back of the net and it didn't help when our defenders were being pushed and shoved onto the ground – although, we were becoming stronger but maybe a little too strong as Aaron Racine and Sam Wedgebury got yellow cards. Whoops! FGR weren't stopping there - Dale Bennet tried to score a goal in the 43rd minute but unfortunately it didn't go in leaving the half time score at 0-0.

On to the second half: we were on to a great start creating even more chances to score but again none went in. Then out of the blue a couple of massive fouls happened and Keanu Marsh-Brown got a yellow card; then another foul, where only the Wrexham player should have got a yellow card but Kurtis Guthrie was also booked. FGR tried to not let a few cards get in their way and Elliot Frear had a really close shot in the 66th minute was saved by Wrexham's Goalkeeper. After that, Wrexham made a substitution and so did we: Marsh-Brown came off and Jon Parkin came on. However, later on in the game, one Wrexham player was sneakily pushing our players over but the ref finally noticed him. He had already got a yellow card so then we saw the red card make an appearance and it was hilarious as he was taking a while to get off the pitch and the FGR fans were going crazy! Then, after a Forest Green corner another Wrexham player got sent off so we had to use this time to our advantage, which we did! We had loads of really close shots that were getting closer and closer to scoring but none of them went in. FGR made another substitution where Elliot Frear came off and Keiffer Moore came on but there wasn't that much time left. Man of the match was announced as Charlie Clough with an attendance of 2246! Although there was five minutes of extra time and we were still fighting to score a goal, we had a couple of shots but we just couldn't score in time so the game ended in a draw 0-0.

After a record season for FGR we have nearly secured 2nd place in the league meaning that we are guaranteed a playoff place. This will be played over 2 matches against the team who eventually finish 5th. The winner will play the winner of the other semi-final at Wembley Stadium on Sunday the 15th of May. Let's hope we get there. Come on you ROVERS!!!!!!!!!!!!!!!!!!!!!!

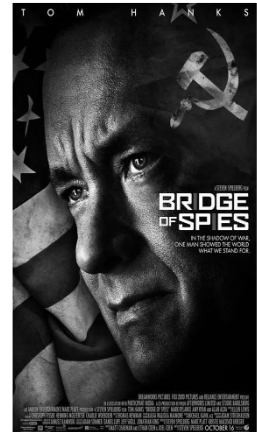


Cinema Club

The film to be shown on Wednesday May 18th at 7.30pm at the Social Club, Avening is

Bridge of Spies

During the Cold War, the Soviet Union captures U.S. pilot Francis Gary Powers after shooting down his U-2 spy plane. Sentenced to 10 years in prison, Powers' only hope is New York lawyer James Donovan (Tom Hanks), recruited by a CIA operative to negotiate his release. Donovan boards a plane to Berlin, hoping to win the young man's freedom through a prisoner exchange. If all goes well, the Russians would get Rudolf Abel (Mark Rylance), the convicted spy who Donovan defended in court.

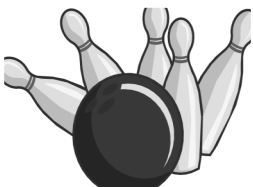


Dates for your diaries for the Film Club in 2016:

Wed 18th May; Wed 15th June; Fri 15th July; Wed 21st Sept; Tues 11th Oct; Tues 8th Nov

AVENING SOCIAL CLUB LTD.

1 Woodstock Lane, Avening



SUMMER SKITTLE LEAGUE

We are inviting entries for our 5 a side Skittle League.

Matches last approx. 1 hour and take place on Thursday or Friday evenings commencing in early May.

A Good Fun Night Out.

For further details contact Derrick on 01453 835752 or 07909562270.



Rima Jones, Artist

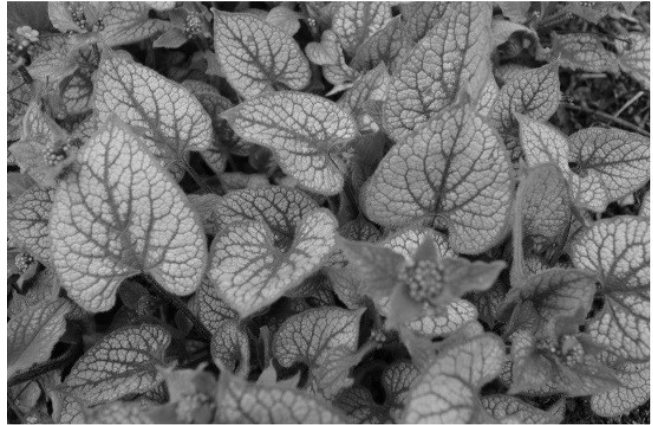
Paintings, Prints and Cards

High Street, Avening

Tel: 01453 835894

Down to Earth

May is the month of the blues. Not despondency blues, but the blues of camassias, forget-me-nots, brunnera, pulmonaria – and bluebells. My original half-dozen bulbs of *camassia leichtlinii* have now formed a good sized clump and after flowering I shall divide them. Their familiar name is quamash and the bulbs were once an important



source of food for native Americans. A more modest, less blowsy flower is borne by the delightful, woodland-dwelling brunnera, which is closely related to the forget-me-not. I particularly like the *brunnera macrophylla* 'Jack Frost'. This has silvery, frosted leaves with green veins. It also self-seeds pleasingly. Earlier this year I bought a pulmonaria 'Blue Ensign'. Unlike the common *pulmonaria officinalis*, which has spotted leaves and flowers that turn from pink to violet or blue, the 'Blue Ensign' has unspotted leaves and flowers of an intense blue. Also suitable for woodland gardens.

And bluebells. But are we all aware that the delicate, scented, native *hyacinthoides non-scripta*, the English bluebell, with its slender flower stem

and flower that bows its head like a modest, early Renaissance Madonna, is under threat from the coarser, unscented interloper, *hyacinthoides hispanica*, the Spanish bluebell, with its thicker flower stem and resemblance to an elongated, cultivated hyacinth? According to the charity 'Plantlife', one in six of our native woodlands contain the



Spanish bluebell, or a hybrid. Charles Clover, environmental journalist, has recently pleaded that we identify and 'rip out the upright invaders and plant the native variety in their place'. Of course, you might not feel like doing this. But you might think about it. As Joni Mitchell memorably sang: 'You don't know what you've got 'til it's gone ... '

Some plants can be so forgiving. I bought a camellia when we came here. What? For this soil? Well, I so much regretted leaving behind two lovely

camellias in our previous garden, (one of which was the exceptional 'Margaret Davis Picotee'). Reader, this camellia has resided in a pot, been transplanted to a shrub border, lifted and replaced in a pot, then last year, planted in our new woodland border (or Bamboo Bed). About six weeks ago, with the camellia in full bud, I decided I really wanted it just about a foot to the left. So I spoke to it nicely, lifted it and plopped it in its new, and possibly final, position. As I write, my camellia is flowering as it has never flowered before. (I am just hoping this is not its swan song!) Of course, the camellia is ericaceous and I have pampered it with ericaceous compost, handfuls of well rotted conifer needles and a solution of sulphate of iron.

The degree to which a soil is alkaline or acidic is measured on the pH scale and testing kits are available for determining the pH of your soil. 7.0 is regarded as neutral; values less than 7.0 indicate an acid soil and values greater than 7.0, an alkaline soil. A plant which has a natural habitat in ericaceous (acid) soil will struggle to take up iron in an alkaline soil.

There are plants that have no need of soil, be it acid or alkaline, instead drawing their moisture and nutrients from the air and water vapour. Such are epiphytes. On a sunny April day we visited the display of epiphytic orchids in the tropical section of the glass house at the RHS garden at Wisley. These use tree branches for



support but are not parasitic on them, drawing nutrients instead from fungi which attach to their roots. The orchid display was spectacular, but I must admit that the flower that really took my fancy was the Bird of Paradise, or *strelitzia reginae*, brought to this country by Sir Joseph Banks in 1773 and named after Queen Charlotte, wife of George III and Duchess of Mecklenburg-Strelitz.

About five years ago garden designer (and 2015 Chelsea gold winner) Dan Pearson bought an old farmhouse and around 20 acres between here and Bath, in which to create a garden. He has now launched a free online magazine for gardeners, digdelve.com, where you can read his eloquent and at times dreamy prose. I recommend it!

Marilyn Jones

Avening Playgroup

The summer term is a busy one, which is always really enjoyed by the children. Taking advantage of the fine weather, they are able to spend a lot of time outside playing and learning in our lovely outdoor area.

We are lucky to have lots of toys and equipment for the children to play with. The staff have been experimenting with different ways of arranging the toys that we have in order to make areas outside to support the children's learning in the seven areas of the Foundation Stage. This reflects the areas that we have inside the playgroup building.

We have created a cosy mark making area in the porch and have created a larger construction area outside under the covered area.

The new children who have joined us have settled into the playgroup very happily. If you have a young child who will be three by August 2017, do contact us to put their name down for next year, particularly if you are hoping that they will attend on certain days to ensure they will have a place. In the mean time they and their carers will be very welcome to attend our toddler group on a Wednesday afternoon from 1.30 until 3.00.

Avening playgroup is a small charity which is run by a committee of volunteers. If you would like to support us by joining the committee or you have any good ideas for fund raising, please let us know. Also if you have any Sainsbury's vouchers or old clothing which you are willing to donate to our clothes bank we would be delighted to receive them.

Phone 01453 832695 for more details.

Debbie Brown

O.L.Cottle Family Business

**Hand Carved Memorials : Cremation Plaques
Additional Inscriptions : Renovations and Cleaning
All Types of Stonework**

Tel: 01453 762877

36 Slad Road, Stroud, Gloucestershire

Avening Youth Club

Avening Youth Club is a vibrant friendly group who meet every Tuesday evening during the school term between 18.15 and 19.45 at the Avening Memorial Hall.

The Youth Club welcomes young people aged between 8 and 14 and offers instructive fun and lively activities presented to them by a trained and caring group of instructors. It is led by Cassie Vickery who has been the stalwart of Avening Youth Club for many years and assisted by Simon Sveder-Cain on most Tuesdays, who provides fun and fitness sessions.

For details contact cherstermancassie@googlemail.com

Dying without a Will. Now that's a real tragedy.

No-one likes the thought of dying, so it's hardly surprising that almost 3 out of 5 UK adults don't have a valid Will (source: www.unbiased.co.uk 2010). Yet having one is one of the most important arrangements you can make during your lifetime.

My name is David Martin. I live in Nailsworth and I'm the local consultant for *Steele Rose & Co* - one of the UK's Premier Professional Home Visit Will Writers. After 22 years serving my country in the RAF, I have spent the last 28 years of my life professionally advising my clients on all personal financial matters and specialising in Wills.

Writing a Will is easier and cheaper than you think. It also ensures that your wishes are carried out simply and efficiently - causing the minimum of anguish for those you leave behind. If you would like to discuss your Will arrangements, redraft an existing Will, Lasting Powers of Attorney, or other associated legal services, at a mutually convenient time in the comfort and privacy of your own home, please contact me:



David Martin

David Martin, local consultant,
Steele Rose & Co
(Nailsworth & surrounding areas)
01453 836699 (M) 07973 405997
Email: dcmartin@hotmail.co.uk
www.steelerose.co.uk
Members of the Society of Will Writers





24 HOUR EMERGENCY COVER
provided by our own clinical teams

TETBURY

23 Church Street

Tel: 01666 503531

www.georgevetgroup.co.uk

MALMESBURY 18-20 High Street

Hospital : 01666 823165

Equine Clinic : 01666 826456

Farm Vets : 01666 823035



PETER SAVAGE

**FENCING AND GATES SUPPLIED AND FITTED
FIREWOOD – LOGS AND KINDLING
JCB EXCAVATIONS – DRIVES, FOOTINGS, ETC.
SOIL, GRAVEL AND HARDCORE SUPPLIED**

Tel: 01453 833239



STEVE FLOYD PEST CONTROL ERADICATION & PREVENTION

E: stevefloydpestcontrol@gmail.com

Www.stevefloydpestcontrol.co.uk

T: 01285 643750

M 07933 357373

Fully Qualified (25 years experience)
Fully Insured





Work with us and make a difference!

Looking for a role with **competitive** pay and job **satisfaction**?

Do you want to make a real difference to the lives of people with learning disabilities?

Hft is a national charity based in your local area with job vacancies.

Call HR Department on 01453 832201 or visit

www.hft.org.uk

Company registered in England No. 734984 Registered Charity No. 313069



A Bite to Eat?



Arranging a Group Lunch, Afternoon Tea, Christening Party, Wake or other social event ?

Avening WI 'Bite to Eat' scheme may be able to assist with your catering needs.

We can provide and serve a selection of freshly prepared sandwiches, scones, cakes etc; a fork or finger buffet; or a two course meal.

For prices and any further details :

Please telephone **01453 835752** or e mail **eileenind@gmail.com**

Carpet and Upholstery Cleaning Specialists

Barden Clean

- Ultra fast drying times
- Environmentally friendly
- Removes stains
- High temp – sterilises carpet
- Improves air quality
- Removes dust mites
- Fully insured

CALL NOW

Michael Denley

**01453 752893
07541 002 891**

www.bardenclean.co.uk

PETER JOY

Sales & Lettings

Sales

01453 833747 nailsworth@peterjoy.co.uk

Lettings and Management

01453 833847 lettings@peterjoy.co.uk

PROUD SUPPORTERS OF AVENING PLAYGROUP

Letters to the Editors

Copy of a letter recently sent to the Parish Council:

Avening has a highway flooding problem on the main road to Minchinhampton (near where Rectory Lane, the road to Minch and Star Lane all meet). When it rains, the main road floods very badly, sometimes right across both carriageways, causing quite a hazard.

My son Hugo and I stopped recently to inspect it when it had dried up and found the following:

- there is a gully that is supposed to take water away from the road;
- this gully has a stout metal frame and a lid, with one side of the frame being open to receive water;
- the frame on this particular gully has sunk, thus the opening has sunk below the pavement; water thus gathers when it rains, trickles through the few remaining cracks and the rest pools;
- the pavement either side of the gully is in exceptionally poor condition;
- water from far up the Minch road rushes down to this gully, possibly passing over several other blocked gullies on the way;
- Highways (presumably) have put some warning signs either side of the flooding area but these seem to cause more of a hazard than they might prevent;

Making sure it was safe, we propped the gully slightly open. Result? No more flooding. Our temporary measures seem to work for now, but we do please need this to be repaired by GCC Highways ASAP.

Please forward this email to whom it may concern at GCC, maybe mention this at next council meeting.

Thank you for your help.

Nicholas Winkfield

A PLEA TO EVERYONE WALKING THEIR DOGS TO OBEY THE REQUESTS TO KEEP THEM ON THE LEAD

There are a few places around the villages where people are asked to keep their dogs on leads. Stock can easily be frightened by a dog chasing them, with disastrous consequences for their young and the friendly, gentle alpacas at present visiting Avening, who seem to have given pleasure to many, should not have to endure being pestered by dogs not properly controlled. But a big thank you for all those people who do respect the 'rules'!

Cherington Parish Council

Planning applications

- 16/01273/FUL Proposed stables, tractor garage and wood store at Evergreen Cottage, Cherington GL8 8SH
- 16/01257/FUL (2) Erection of grain store building at Aston Farm Cherington GL8 8SW

Visit www.cotswold.gov.uk and go to 'planning' section for more information

- S.53 Wildlife and Countryside Act 1981. Definitive Map Modification Order upgrading length of bridleway to a restricted byway at Cherington. PROW NCH12 commences at junction with 40510 at ordnance survey reference (OSGR) ST91439763 extending in a westerly direction for approximately 1,500 metres.

Visit www.gloucestershire.gov.uk and visit 'footpaths' section for more information.

Grant funding

Cotswold Visitor Giving Scheme – grants of between £500 and £2,500 are available for projects and activities which will conserve and enhance the natural beauty of the landscape, manage and restore habitats, improve footpaths and bridleways and look after the area's distinct heritage. **Closing date 31st May.** Visit www.cotswoldaonb.org.uk

Queen's 90th Birthday – Summer event

In addition to the 'Light a Beacon' event in April, Cherington Parish Council agreed earlier in the year to purchase commemorative coins to distribute around the parish in celebration of the Queen's 90th birthday. Discussions about a birthday event for Summer will be discussed at the Annual Parish Meeting. Look out for details coming soon!

Parish Council meetings: The date of the next Parish Council meeting will be held on **Tuesday May 3rd 2016 at 6.00pm** in the Village Hall. Future meeting dates for parish council meetings: Tuesdays September 13th and November 8th at 6pm – Village Hall. All residents of the Parish are welcome to attend parish meetings. There's 15 minutes of public time at the start of each meeting where you can bring up any issues. If you have any concerns, issues, queries or comments you would like to make relating to the Parish then please don't hesitate to contact the Parish Clerk – Frances Ashfield on 01453 767384 or via email at cheringtonparishcouncil@yahoo.co.uk

Down Memory Lane



Many thanks to Hazel Redding, who let us know that the rear leader left is Gill (née Richings). Extreme right leader, Miss Phillips from Tetbury. Can anyone fill in any other names?



TOAD HALL
TRULL FARM
TETBURY
GL8 8SQ



Your own private room for lunches, dinners, drinks, receptions, childrens parties, business meetings, exhibitions, film nights. Large screen and internet.

Kitchen plus smaller room available. Outside or "inhouse" catering. A marquee could be added if required.

For Bookings and prices please contact :

Fi Mitchell

fimitchell06@btinternet.com

01285 841229 07885 094393

Avening Parish Council



PLANNING: NEW PLANNING APPLICATIONS

16/01381/FUL The Lair Pound Hill Avening Tetbury Gloucestershire GL8 8LZ

First floor extension

For more information about current and past planning applications see CDC's website: www.cotswold.gov.uk

THE BIG COMMUNITY SWITCH

Residents in Gloucestershire are being invited to take part in the latest Big Community Switch auction, which can help households save money on gas and electricity bills and ends on 16 May.

This scheme is available to residents on dual and single tariffs and those with pre-payment meters.

To register your interest go to www.gloucestershire.gov.uk/bigcommunityswitch or phone 01452 425757

ANNUAL VILLAGE MEETING

The Annual Village Meeting will start at 10.30 am in the Memorial Hall on Saturday, 7 May.

PHYSICAL DISABILITY AND SENSORY IMPAIRMENT NEEDS

Gloucestershire County Council is carrying out an all age Physical Disability and Sensory Impairment Needs Analysis to map need and trends for people with physical disabilities and impairments. The outcome of this will be the creation of a report which will help to inform future council policy.

If you have a physical disability or a sensory impairment, or if you are a carer supporting someone with these disabilities then GCC would like to hear from you.

The survey can be completed by the person with a disability, or on their behalf by a person who supports them and is open until Sunday 8 May.

Link to survey: <https://gloucestershire-consult.objective.co.uk/public/socialcare/pds/pds>

NEW CLERK to the PARISH COUNCIL

Sue Bryant from Bisley has been appointed Clerk to the Parish Council. Sue will begin training and handover almost immediately and will be at the **ANNUAL VILLAGE MEETING** on 7 May.

VOLUNTEER of the YEAR

Who would you award the coveted prize of VOLUNTEER OF THE YEAR to ? Contact the Clerk or the Chairman with your nominations NOW !



Congratulations to Shane Williams and Kim Hanier Northcott on their Wedding Day, 31st March, 2016

**BELL
HOUSE**
Dental Practice

- **Dentistry for all the Family**
- **Private and Denplan**
- **Cosmetic treatment**
- **Tooth whitening**
- **Hygienist**



Robert W. Carter B.D.S.
7 New Church Street . Tetbury . Gloucestershire . GL8 8DS
Telephone (01666) 503788

0100315

THE NEXT PARISH COUNCIL MEETING

Will be held on Thursday, 19 May 2016 at 7.30 pm in the Chamberlain Room at the Memorial Hall.

EVERYONE IS WELCOME

The Parish Clerk can be contacted via email: parishclerk@avening-pc.gov.uk
or by phone: 01285 380041 or 07870 170823

Church Services in Avening & Cherington in April

Sunday May 1st	9.30	Cherington	Holy Communion (CW)
	11.00	Avening	Holy Communion (CW)
Sunday May 8th	9.30	Cherington	Holy Communion (CW)
	11.00	Avening	Holy Communion (CW)
Sunday May 15th	9.30	Cherington	Holy Communion (CW)
	11.00	Avening	Holy Communion (CW)
Sunday May 22nd	9.30	Cherington	Morning Prayer (BCP)
	11.00	Avening	Family Service (CW)
Sunday May 29th	9.30	Cherington	Holy Communion (CW)
	11.00	Avening	Holy Communion (CW)
Sunday June 5th	9.30	Cherington	Holy Communion (CW)
	11.00	Avening	Holy Communion (CW)

Squeaky Clean

- * Regular Cleans
- * One off Services
- * House Move Cleans
- * Spring Cleans
- * House/Pet Sitting
- * Assisted Outings
- * Assisted Appointments
- * Companionship
- * Errands
- * Cooking
- * Key Collect/Drop



Louise

Tel: 0782 595 1852

eMail: info.squeakyclean@gmail.com

CRB Certificate and Public Liability Insurance



Queen Matilda Tavern



Real Ale Real Food Real Fires
Open Tuesday to Sunday

NEW SPRING MENU

Graham's Quiz night the last Thursday every month

Sunday lunches available from 12 noon

Two for one pizza Tuesday

'Fishy Thursday': Two for one fish and chips

Star Lane, Avening, Glos, GL8 8NT

Telephone 01453 350305 Website: queenmatildatavern.co.uk

Dates For Your Diary

Tuesday 3rd May	Cherington Parish Council Meeting	Cherington Village Hall	6.00pm
Saturday 7th May	Avening Annual Village Meeting	Avening Memorial Hall	10.30am
Saturday 14th May	FOAS event: The Grey Earls	Avening Memorial Hall	7.30pm
Wednesday 18th May	Film Club Bridge of Spies	Avening Social Club	7.30pm
Thursday 19th May	Avening Parish Council Meeting	Avening Memorial Hall	7.30pm
Saturday 21st May	'Hoedown' (Mark Townsend Trust)	Sir William Romney's School	7.30pm - midnight
Sunday 5th June	Tea Parties—HM The Queen's 90th Birthday Celebrations	Street/Memorial Hall Avening and Cherington	tba
Sunday 12th June	Avening Fete and Fun Dog Show	Village Hall, School Garden Church & Old Rectory Gardens	2.00pm
Saturday 16th July	Art and Craft Workshop for Children	Cherington Village Hall	2.00-4.00pm



Church Floodlighting

7th April

In loving memory of **Nicola Vickery** from her family.

*If you would like to have this in memory of a loved one, or to celebrate a special event, contact **Paul Brown 01453 835 983***

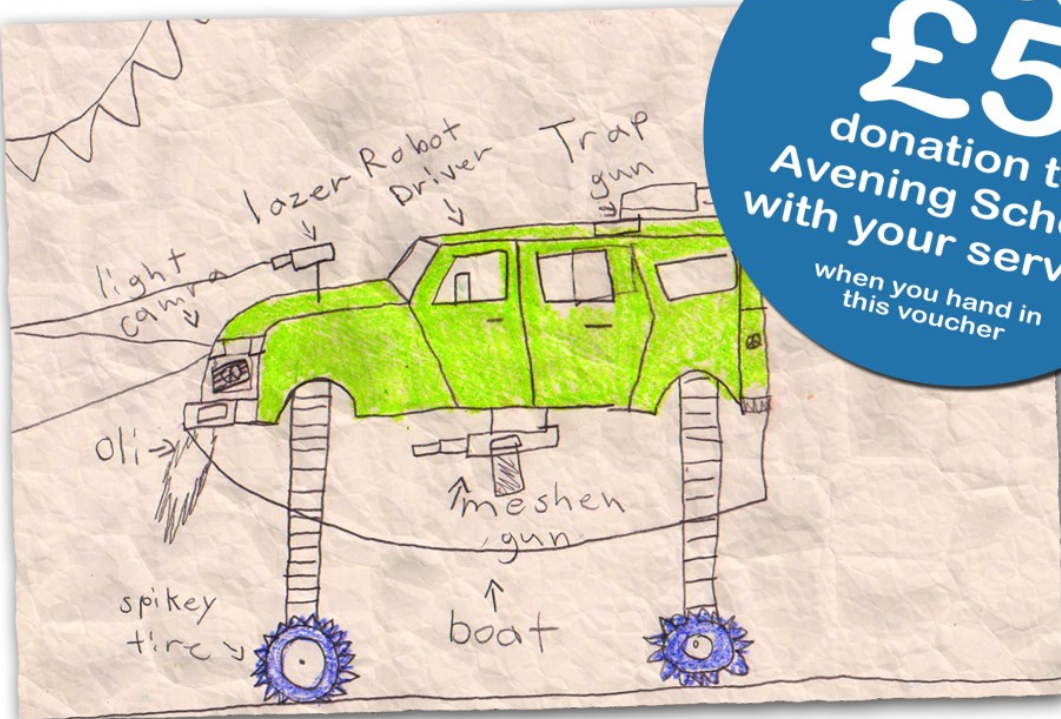
The cost is £5.00 for 2 hours

£20 OFF Your Next Service

Just hand this voucher to one of our friendly team members

- ✓ All Makes and models
- ✓ Dealer level diagnostics and servicing
- ✓ Free no obligation estimates
- ✓ local free pick-ups

**PLUS
£5**
donation to
Avening School
with your service
when you hand in
this voucher



for free, friendly, local advice give us a call

01453 832871

info@service-tech.org.uk
www.service-tech.org.uk



Inchbrook Trading Estate, (A46) Bath Road, Nailsworth, Stroud, GL5 5EY



He Missed Out Make Sure You Don't

If you haven't recently spoken to a renewable energy supplier, it's time you should...

To see how a renewable heating system can make the whole family happy, call **01666 501580** or visit www.ecovision.co.uk for more information



The Bell at Avening

a traditional British pub serving a great selection of real ales and food



Food served from Tuesday evening to Sunday lunchtime

OPENING TIMES:
MON - FRI: 5:30PM - CLOSE
SAT & SUN: ALL DAY FROM 12 NOON

LIVE MUSIC EVERY MONTH

LAST MONDAY OF EVERY MONTH IS
JAMMING NIGHT

FOR LATEST INFO, VISIT OUR WEBSITE AT
WWW.THEBELLAVENING.CO.UK
OR LIKE US ON FACEBOOK

Call us on: **01453 836422** or e-mail us at info@agpubs.co.uk

www.thebellavening.co.uk

Find us on Facebook
by simply searching
"Bell at Avening"

