

The Villager

A magazine for Avening, Cherington and Nags Head

October 2008

50p



Who to Contact

Parish Priest: The Reverend Celia Carter
Tel: 01453 832716 Fax: 01453 834885

Lay Reader: Derrick Pierce 01453 835090

AVENING:

CHURCHWARDENS George Buchanan 01453 833016

Stephanie Hamilton 01453 834910

SACRISTAN Gill Parsons 01453 832247

PCC SECRETARY Margaret Barton 01453 835541

PCC TREASURER Peter Lindesay 01453 834402

ORGANIST Stuart Walkley 01453 757784

FLOWER TEAM Gill Parsons 01453 832247

CHERINGTON:

CHURCHWARDENS Roger Gegg 01453 834805

John Bate-Williams 01666 503544

SACRISTAN Beryl Milsom 01285 841248

PCC SECRETARY Elizabeth Workman 01285 841294

PCC TREASURER Richard Lippiat 01666 502238

ORGANIST Elizabeth Workman 01285 841294

Beryl Milsom 01285 841248

FLOWER TEAM Elizabeth Workman 01285 841294

VILLAGER MAGAZINE EDITOR

Kathleen Lindesay Court Lodge, Avening GL8 8NX
01453 834402

e mail villager@lindesay.demon.co.uk

DEADLINE FOR COPY 20th of each month

The Parish Letter

We are led to believe that 80% of the British public dream of life in the country, and yet, much of our thinking is still from an urban perspective. It is not always appreciated how much we owe to our farming community for not only are they vital for Britain's food production, but it is they who keep the country as it is. They who maintain the grasslands, woodlands, heaths and moor lands. They who plant the trees, lay the hedges and rebuild the stone walls. For fifteen years the industry has been in steep decline and poorly represented by an unsympathetic government and media. In spite of diversifying and continually adapting to new challenges many of them have faced depression, breakdown and even suicide. Our farmers are undervalued and under paid. In general their income has decreased by 40 % over the last few years, while having to face the disasters of foot and mouth, BSE, blue tongue and bovine TB. They work long hours; in conditions that many would think intolerable. This summer, and last, they have had to struggle with ceaseless rain and devastating floods. They are resilient, courageous and resourceful. The modern farmer needs not only to understand the working of the land and the care of his stock, but has also to be a business man, scientist, mechanic, and vet.

We are likely to be more and more dependent on our farming industry in the near future. We are an island race. The cost of transport to bring in foreign food is increasing by the month and cheap food is getting hard to find. The world is hungry and the third world countries in the future are going to be less willing to export their crops for cash, while their own people go short.

As I write this, we prepare for the traditional Harvest Festivals in both Churches. I hope that the Churches will be full to give our farmers the support they need.....and may we, in the weeks ahead, offer them our sympathy and prayers, as they struggle on waterlogged

Parish Letter continued

fields to bring in the rest of the harvest, and prepare the land for the Winter sowing for our food next year.

Don't forget the Farmers' Markets and the small shops!

Rev Celia

CANDLELIT SERVICE FOR THE DEPARTED

Every year we give thanks for the lives of those who have died and for whom we still grieve, by holding a service of prayer, music and the lighting of a candle in their memory.

This service will be in

HOLY CROSS CHURCH AT 7PM

ON FRIDAY OCTOBER 31ST

‘Maud’s Cupboard Sunday’

Maud Maxwell had many friends in this village and I am sure you would like to come on Sunday 2nd November to the dedication service of the magnificent set of cupboards built in her memory by George Buchanan.

The service will be at 11.00am ...followed by a glass of wine.

Coffee Morning

**In aid of Holy Cross Church, Avening
on Tuesday 25th November
at Court Lodge, Avening
10 am –12 noon**

For more detail see next month's Villager

GLOUCESTER CATHEDRAL OPEN DAY

Don't miss your opportunity to find out more about how diocesan departments can support you and your parish.

Come along to the Open Day being held in Gloucester Cathedral on **Thursday 9 October** between 2- 8pm.

2pm Bishop Michael opens the event with a talk

3pm & 7pm Question time sessions with both

Archdeacons and the Diocesan Secretary.

5.30pm A special Evensong

to 6.30pm

Tours of College Green and staff offices are being held all day. Presentations by each department will also be held throughout the day.

REMEMBRANCE SUNDAY 2008

A service of remembrance and laying of wreaths at the Millennium Cross will take place on Sunday November 9th at 10.50 am



PILGRIMAGE TO THE HOLY LAND 2009

There are still some places available for
THE HOLY LAND

Leaving here on MARCH 1ST and returning on MARCH 8TH 2009

The trip is being organised by Derrick Pierce through
Pilgrim Travel Ltd (an ABTA registered travel agent))

And will be accompanied by the
Revs Richard & Margaret Maslen

Anyone interesred should contact Derrick on 01453 835090
or e mail derrickpierce@tiscali.co.uk for further details

SERVICES IN AVENING & CHERINGTON

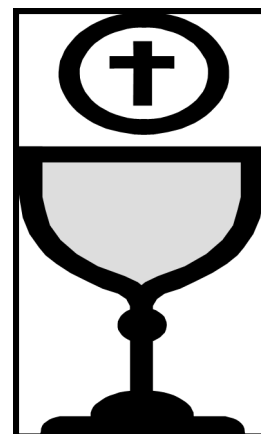
Day/Date	Church	Time	Service
SUNDAY October 5th	Avening	8 am	Holy Communion BCP
<i>20th after Trinity</i>	Cherington	9.30 am	Holy Communion BCW
	Avening	11 am	Holy Communion BCW & Sunday School.
SUNDAY October 12th	Avening	8 am	Holy Communion BCP
<i>21st after Trinity</i>	Cherington	9.30 am	Matins BCP
	Avening	11 am	Holy Communion BCW & Sunday School.
SUNDAY October 19th	Avening	8 am	Holy Communion BCP
<i>22nd after Trinity</i>	Cherington	9.30 am	Holy Communion BCP
	Avening	11 am	Holy Communion BCW & Sunday School
SUNDAY October 26th	Avening	8 am	Holy Communion BCP
<i>23rd after Trinity</i>	Cherington	9.30 am	Holy Communion BCW
	Avening	11 am	Holy Communion BCW & Sunday School.
FRIDAY October 31st <i>All Souls Day</i>	Avening	7 pm	Service for the Departed
SUNDAY November 2nd	Avening	8 am	Holy Communion BCP
<i>24th after Trinity</i>	Cherington	9.30 am	Holy Communion BCW
<i>All Saints' Day</i>	Avening	11 am	Holy Communion BCW & Sunday School Dedication of Maud's cupboard

BAPTISM IN OCTOBER

Benjamin Uzzell

Church Duties:

AVENING



Date	Sidespersons	Chalice Assistant	Sacristan
Oct 5th	S Hamilton/ H Graham-Munro	D Pierce	M Cox
Oct 12th	G Buchanan/ P Hansen	P Brown	A Brick
Oct 19th	C Boddam-Whetham/ F Conway	S Uzzell	P Sanders
Oct 26th	K Lindesay/ S Hamilton	P Lindesay	G Parsons
Nov 2nd	J Pargetter/ M Barton	D Pierce	M Cox

Avening Church Floodlighting

*If you would like to have the church floodlit to commemorate a loved one
or to celebrate a special event, please contact*

Paul Brown 01453 835983

The cost is £5 for 2 hours

Gloucestershire Historic Churches Trust Annual Sponsored Bike Ride 2008

Three intrepid OAPs set off on their bikes from Cherington last Saturday morning, having checked in at our church for our first port of call. It was the first perfect bicycling weather for almost a month. Whizzing along past Star Farm and on the back road to Chavenage we could ride three abreast on the traffic free country lanes. Chavenage was looking as good as it did in Larkrise to Candelford and the Chapel there gave us our second tally. On then, downhill nearly all the way to Tetbury, where we had a great time visiting all 5 churches. In Christchurch we were most hospitably entertained with coffee and biscuits and a chance to sit down and recharge our flagging energies. So much so that we felt empowered to tackle the great hill out of Tetbury up to Long Newnton. There the two parishioners manning the church were delighted to see us as we were the first cyclists to appear and they had been thinking of going home. Emboldened by this reception we struck out for Ashley, a deceptively easy ride undisturbed by traffic until we reached the village. We found the little church all decked out for Harvest Festival the next day and the churchyard being spruced up for a christening as well. More time spent chatting with friends and admiring the beautiful decorations until at last another cycling family appeared – the first we had come across. Weary now we headed for the last trophy – Culkerton Chapel.

Almost home now but we had time to stop at the house of one of our sponsors and were refreshed with gin and tonics and a comfortable seat in their conservatory. It took some effort to get back on our bikes again and we weaved our way somewhat wobblingly but very happily home.

We had visited 10 churches and cycled about 14 miles, met all sorts of people and raised over £400 for our own church and the Historic Churches Trust. The 10 churches we visited were all different and so very beautiful it brought home how lucky we are to have these lovely buildings on our doorstep and how important it is to make the effort to maintain them.

Jennifer Grant-Rennick

Avening Roll of Honour No. 9

Charles Smith

Private: 4th Battalion Grenadier Guards

Charles Smith was born in May 1895, the second of three sons born to Albert Smith of Avening, a stonemason, and wife Elizabeth Ann Eldridge, born Coates.

Charles was an early volunteer for service, presenting himself in Gloucester as a recruit on the 23rd of November 1914.

His Attestation Papers tell us that he was then 19 years and 189 days old, 5ft 11 inches (1.8m) tall, weighed 10 stone 10lbs (68 kgs) with brown hair and blue eyes. He was employed as a Brass Turner (possibly in Nailsworth at Johnson's Engineering) and stated his religion as Baptist. He may well have shown a preference for service with the Grenadier Guards as a number of villagers were already serving with that Regiment and he was called onto their strength at Caterham in Surrey on Tuesday the 24th of November.

He was given about nine months training with the 4th Battalion prior to them leaving for France on the 14th of August 1915. There they joined with other Guards units to form the 3rd Guards Brigade, part of XI Corps, all part of the 1st Army. This was under the command of Sir Douglas Haig with Sir John French having overall command of British Forces.

There was to be a "Big Push" at Loos, designed to take place whilst the German Army was concentrating on the Russian front. The aim was to advance 20 miles which, it was hoped, would force the Germans to withdraw further having lost the critical railway network in that region.

XI Corps was held in general reserve at the outset of the battle which began on the 24th of September. To get to the front, it set out on the 20th, marching twenty miles throughout successive nights. Sir John French gave orders that the Guards Division should back up the remainder of the Corps, moving to an area close to Loos. They were warned to carry extra rations as it may be some time before their cooks could catch up with them. They also carried greatcoats on the march to the battle area.

At 3am on the 25th of September 1915 the 1st Army attacked and

over the next 36 hours, despite heavy losses, advances were made. At 9.30 am Haig asked French for the reserves and part of XI Corps was released, but did not arrive until after noon, having been held up in the communications trenches that were full of wounded men, stretcher bearers and signals runners, at the same time being under fire. They came under Haig's command at 1.20pm. The Guards Division was moved closer to the front line only to find the area allocated to them already occupied.

The front line situation was chaotic. There were insufficient men available to exploit the gains and strong German resistance from their second line, now being reinforced, brought further advance to a halt. Believing the infantry had broken through near Hulluch, orders were sent out at 11.20pm for a renewal of the attack at 11am on the 26th. More chaos and heavy losses to the 1st Army occurred and, at last, in the evening of the 26th the Guards Division was deployed into the original British trenches, where they relieved other units now exhausted and battle weary.

Here it was decided that the remainder of XI Corps would attempt to recapture the dominant Hill 70, taken early on the morning of the 26th, only to be retaken by a German counterattack a few hours later.

The day of the 27th dawned misty and it was cloudy and raining all day and the 3rd Guards Brigade moved off at 4pm, in column of fours along the Vermelles to Loos road in an attempt to take Hill 70. They were caught by a heavy artillery barrage and suffered many casualties, our Charles Smith being one of them. (An eventual assault on Hill 70 was made by the Welsh Guards but they were destroyed by machine gun fire). He was declared missing on Monday the 27th of September 1915, his Next of Kin being informed on the 30th of October.

Charles has no known grave and is remembered on the Loos Memorial, tended by the Commonwealth War Graves Commission. He was posthumously awarded the Victory Medal, the General Service Medal and the 1915 Star.

He was 20 years old and unmarried. I am indebted to Charles' niece, Christine Benton, for her assistance.

Fred Vening

PIG FACE CELEBRATIONS

HOLY CROSS FESTIVAL

AVENING 2008



*Queen Matilda &
William the Conqueror*



*The procession leaving the
Church for the feast*



Jugglers, Fire Throwers & Jesters entertain the populace



The Prioress, Ce-

Medieval families attend the service before the feast





The all-important Boar's Head



The Pig Roast being prepared



The Pope converses with the Bishop





Women's
Institute

Avening WI

As we had no meeting in August members went to the Ship at Brimscombe for a meal which was really good and a very enjoyable evening.

September is the month for our little show. There were plenty of entries except in the flowers which had been battered by all the rain. The cookery again was of a very high standard, prizes were given for first and second in all classes.

Members were invited to Highgrove thanks to the Mayor of Tetbury. It was very enjoyable and we had an excellent guide.

The Autumn Council Meetings are being held in four different venues in the County. Some members are going to the one in Fairford and all places have very good speakers. Also some ladies are attending 'Silence in Court' at the Magistrates Court in Gloucester.

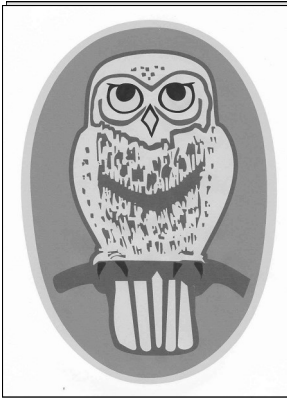
On 10th October we have a friendly skittles with an American Supper held at the Social Club at 7.30 pm. There will also be a Quiz at the Social Club, cost £10 per team to include a ploughmans supper. Date to be confirmed.

The County Walk on October 18th is being hosted by Avening. Walks will be 2, 4 or 6 miles with ploughmans lunch to follow.

The Christmas Shopping trip is to Coventry on November 19th. Cost £10 per person. Anyone who would like to go please ring Hilary Hodges on 01285 841318 to book your seat. The coach will leave Avening at 8.30 am and then pick up at Tetbury.

The next meeting is 9th October and it is our birthday month. No doubt we will celebrate as we girls do like to party! Our speaker is Chloe with Midnight Storytellers. The competition is a Fruit and Vegetable Animal, also Flower of the Month.

Wendy Eldridge



Avening School

AVENING PUPILS LAUNCH NEW SCHOOL YEAR WITH ENTREPRENEURIAL SPIRIT

The 104 pupils at Avening Primary School got the new school year off to a flying start by showing their entrepreneurial spirit. Coordinated by the newly elected School Council, the whole school organised a fundraising Fair which was a great success and raised £268.93

The Fair involved each of the four classes taking charge of the sales of bric-a-brac, toys, books, bowls of goodies (made up and brought in by each pupil), and produce from the school garden. On top of this the older children organised some competitions: guess the number of sweets in the jar and did some very artistic face painting. Parents, families and friends of the school were invited in to spend their money and were offered refreshments by the Friends of Avening School.



*Owls pupil, Jessie Porter gives another
'Headteacher welcome customer a colourful face'*

Diana Boulton

comments: "This was very much the children's event and what a success they made of it!

"The event was made doubly special as it was the first school event to be held in the newly revamped Memorial Hall. Thanks to the hard work of a great Village Hall Committee, and funds from the School and the LEA, the Hall now offers a bright, refreshed venue for all sorts of community activities. We were very proud to be one of the first since the work was done during the summer holidays."



Avening Primary School Late Summer Fair in progress in the newly refurbished Memorial Hall'

As decided by the pupil-led School Council, the proceeds from the Fair will go towards the purchase of additional listening centre resources including new audio books.

STOP PRESS!!

AVENING PRIMARY SCHOOL OPEN DAY OCTOBER 3rd

Are you a prospective parent or just interested to find out more about our school? If so, please join us on October 3rd between 9.30am and 12 noon for our open morning where you can meet us and our pupils and see our fabulous school in action.

www.avening.gloucs.sch.uk

In term time please contact 01453 833191



Evening Playgroup

Our new children have all settled well into playgroup and last years children are all happy to be back.

This term we have opened our doors to younger children, and are now accepting children the term they become 2 years 9 months old. Our toddler session is open on a Thursday afternoon from 1 to 3, for all children 0 - 5 with their accompanying adult.

During this term the children will be learning about themselves. What they look like, how tall they are, how many ears, eyes etc they have, their favourite things and feelings. They will also be learning about colours, nursery rhymes, autumn and the numbers 1 & 2.

In addition to these, the children will be taking part in a daily activity from phase one of the government's published letters and sounds. These are activities which concentrate on developing children's speaking and listening skills and the awareness of sound, which pave the way for children to make a good start in reading and writing when they start school.

Thank you to all those who attended and who donated and sold items at The Nearly New Sale that was held Saturday 13th September. Again it was a brilliant success, we raised £245.00 and we will certainly be planning on running it again next year.

On Friday 3rd October the playgroup will have an open morning from 09:30 - 12:00, giving everyone the opportunity to come and have a look for themselves at our fabulous facilities. We hope to see you there!

If anyone has a couple of hours free a month, and would like to help us on the committee, organising fundraising events or applying for grants, we would be very interested. The person taking up the voluntary position would have to have a CRB check, like all members of the committee.

For further information please call the playgroup on 01453 832695

The PrioryInn Tetbury

***Exceptional quality, value for money,
REAL local food and drink***

***Forest of Dean Duck, Bibury trout, Bread we bake with
Shipton Mill flour, Willesley Beef, Cotswold Wild Boar
Long Newnton Pork, Duchy Home Farm veg, Malmesbury
wine, Uley ale, Foscot lager and more.***

Bring this advert during October and get a house of glass wine
or ½ pint of real ale with a main course*

*Terms and conditions apply

***“Mouth-watering” The Guardian
“The food was superb” London Evening Standard
Campaign for Real Ale Guide NEW ENTRY 2009***

**Reservations: 01666 502251
www.theprioryinn.co.uk**

The live music programme for October is as follows:

Sunday 5th October - Benita Johnson - ‘Bristol’s very own jewel’
‘Venue Magazine’

**Sunday 12th October - Sam Holmes and Phil King - hugely talented Bristol singer/
songwriters**

Sunday 19th October - Russ Poole - singer/songwriter from Gloucester

Sunday 26th October - King Rich - a breath of fresh air in the acoustic world

Free entry from 8 / 8.30 pm. Reservations on 01666 502251

Buy-LOCAL.net

The following letter was sent to the Editor by Deborah Smith, Clerk to Avening Parish Council as she thought it may be of interest to local readers of the magazine.

My name is Rhian Marcham and I am currently setting up a home delivery service for local food called '*Buy-LOCAL.net*' for the County of Gloucestershire. I live in Cheltenham and have always had a strong passion for the outstanding quality of local food and supporting local producers.

Buy-LOCAL.net has been trading since 2006, operating a very successful pilot scheme in the Bedfordshire area. The intention is now to set up similar franchises in other areas of the country. The essential nature of the company is an online farmers' market supplying the local consumer with products from local producers and suppliers (all within a 25 mile radius). These include meat, vegetables, fruit, fish, dairy products, processed products, cleaning products, and arts and crafts.

The aim is to broaden the opportunities for a growing number of consumers to purchase truly local produce, to increase the awareness of the high quality of produce available in Gloucestershire, and to be able to support local producers and businesses. Reducing 'food miles' is central to the mission statement of the company, allied with the chance to make a real difference in the local community. The bonus of this venture is that, as part of a franchise network, national coverage and advertising will enormously facilitate a swing in consumer attitude towards supporting local businesses.

Our service works just the same as any supermarket on-line system. Customers register on our website (www.buy-LOCAL.net), choose what they want to buy, pick a delivery day and 2-hour time slot, and we deliver all of the produce directly to their door/fridge! All the produce is picked up from our producers every morning of delivery, to ensure the freshest produce is delivered to our customers.

We are really trying to get our business known, and I think this local exposure will be crucial in achieving this.

Rhian Marcham

buy-LOCAL.net

BEN PROTHERO Artist Blacksmith

*Beautiful handcrafted sculptural ironwork
for gardens and interiors*

Traditional style forgings ❁ Restoration and repairs ❁

Bespoke ornamental and functional railings and gates
made to order ❁

For a free Quote / Design or to see my recent projects

Call: 07932 631440 or 01285 841220

email: ben.prothero@tiscali.co.uk

The Forge at The Old Brickworks, Ebley, Stroud, Glos

PROBLEMS WITH YOUR COMPUTER?

Perhaps we can help you?

BOOKMARK COMPUTERS (of Stroud) Ltd
can offer advice on:



**Buying New Computers
Software & Hardware Repairs
Tuition Upgrades**

NO FIX - NO FEE

**Contact us on: 01453 886131
Email: mark@bcos.biz**

Registered at Companies House. Company number 4180684

A New Life for Avening Memorial Hall

As many of you will have noticed the summer saw a frenzy of activity in the village hall. This activity is part of an overall improvement project that will last around two years, resulting in the Hall being completely refurbished.

This refurbishment is being funded by the Gloucester County Council and Avening Primary School who are working in partnership with the Hall Trustees' Committee to bring about positive change for all users of this incredible building.

The Trustees' purpose is to uphold the principles of the founding charity which first donated the Hall to this village close to a century ago. It was provided to the Village so that all members of the Village community, young and old, would benefit from having a place such as the Hall in which to meet.

In order to achieve these goals the new Committee, formed in February 2008, set about working to understand the priorities that faced the Hall and the finances that would be needed to meet the goals of the founding charity.

This first meant trying to prevent the Hall from further degradation and vandalism; followed by ensuring that the current building was restored to its best possible condition. The Committee split its time looking at "what the community wanted to use the Hall for" and "how we could raise the money to restore the building".

The Committee has met several times, including an AGM at which we communicated the goals of the new Committee and proposed a course of action for the Hall. The work you have seen over the summer represents the first phase of this plan.

The work completed included insulating and restoring the roof, the provision of new toilet facilities including a disabled toilet, redecoration of the main hall and the Chamberlain room, repairs to the memorial porch roof, the fitting of new security measures and new lighting.

Subject to ongoing agreement further work planned in the coming twelve months includes, repairs and re-sanding the floor in the main hall; new windows; further re-decoration and new heating. At the end of the summer of 2009 the Hall will have been completely refurbished.

The improvements undertaken still need an element of "Villager Volunteer Power" and anyone who wishes to help by giving up time, skills or even just moral support is welcome. The next set of

improvements will be undertaken in the October School half-term.

Of course the whole purpose of this effort is to provide a Hall that is to be used – not just looked at – and the Committee will now begin to turn its attention to promoting the use of the Hall. The more that Hall is used to provide the kind of activities you the Village wants, the faster the improvements can be made.

I encourage you to take a look at the Hall. We hope you will like the changes that have been made. In the coming weeks and months you will start to hear more about the activities that the Hall can hope to host. We will be providing a booking and information number as soon as one has been established (in the next week) that you can use.

If you wish to support the Committee and are able to offer help please let any member of the Committee know.

Simon Wheatley
Chairman of the Trustees
Avening Memorial Hall



CROSS INN

Call us on Freephone:
08444 123 100

The 16th Century Cross Inn offers a tempting menu and welcoming atmosphere in the heart of Avening. Our experienced chef prepares all the dishes, starting from scratch and using fresh ingredients, sourced from local farmers and producers.

- ✿ Lite bites and a la carte
- ✿ Traditional family Sunday roast
- ✿ Selection of Real ales, great wines and coffee
- ✿ Function room/skittle alley for hire



www.crossinnavening.com | Star Lane, Avening, Gloucestershire, GL8 8NT

The China Hire Company

WEDDINGS * CHRISTENINGS * SPECIAL OCCASIONS



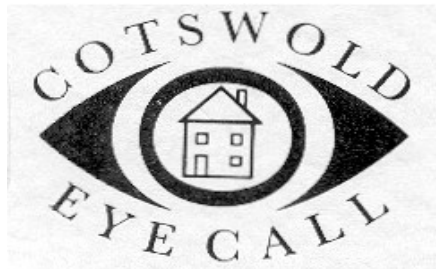
China & cutlery hire for all occasions
Friendly and reliable service
Washing up, delivery & collection services
are also available

Please contact Karen for a quotation or further information

Tel : 01453 835911 Mobile : 07798 722649

UKBlinds*direct*

**Quality Window &
Conservatory Blinds
Call Free 0800 043 1655**



Eye examinations

housebound

at home – for the

**Specialised service – free (NHS) for those over 60
including Glaucoma, Macular, Visual Fields Screening
and full sight test**

Telephone 01453 833272 Mobile 07800 821624

Graham O'Regan BSc(Hons) FSMC FCOptom

HANDYMAN & MAINTENANCE SERVICES

Routine Maintenance
Painting & Decorating
Flat Pack installation
Gutter cleared
Fences repaired
Smoke alarms, shelves
Curtain poles installed
Gardening & vegetables
Knife sharpening

OAK LEAF SERVICES

KEVIN LEA

01453 762735

077408 54170

kevinlea@virgin.net

www.oakleafservices.co.uk

badminton [wines]

Hand-picked for you

WINE TASTINGS

Fun, informal wine tastings for you & your wine-loving friends

At your home, at a local venue, or in our own Tasting Room

Wines of quality and value from small producers.

To find out more, contact Mike:-

T: 01454 219091

E: mike@badmintonwines.co.uk

www.badmintonwines.co.uk

STEVE BURFORD

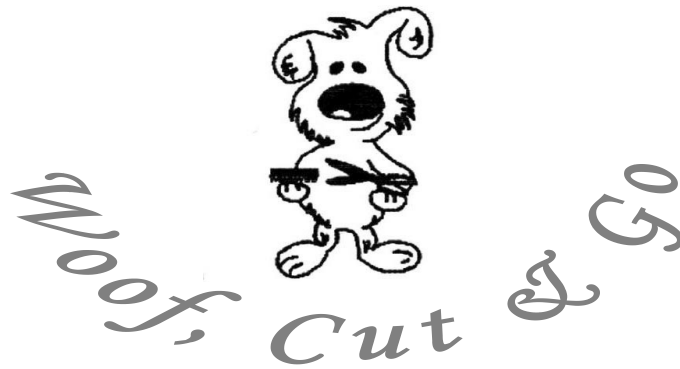
Carpentry Services

INSIDE AND OUTSIDE YOUR HOME

**DECKING, TREE HOUSES, PERGOLAS,
FENCING, PURPOSE MADE GATES**

FOR A FRIENDLY & RELIABLE SERVICE

Call 01453 839059/07949 910418



Kim Pit-

tam

Dog Groomer

Telephone 01453 839004

Mobile 07766 609790

Grooming ~ Bathing

Hand Stripping ~ Nail Clipping

Pick-up & Delivery service available

DOLPHIN WATER SOFTENER & SALT SUPPLIES

Unit 2, Close Farm Business Park, Tetbury, Glos, GL8 8PH

If you would like to improve the quality of your water supply contact us for a free information pack by telephone on 01666 500065 or fax 01666 504911 or e-mail: ngjkind@btinternet.com

We can also supply the following at competitive prices:

- ♦ Granular Salt £6.50 per 25 Kg bag
- ♦ Tablet Salt £6.50 per 25 Kg bag
- ♦ Block Salt £3.60 per pack of 2 x 4 Kg blocks
(Harveys & Kinetico)

Available for collection from

1.00 pm – 5.00 pm Monday to Friday

***Delivery service available within a 10 mile radius of
Tetbury***



FOOT PROBLEMS?
QUALIFIED FOOT HEALTH PROFESSIONAL
CAROL LEGG MCFHP MAFHP
Tel: 01453 834100 Mobile: 07791 840406

- ◆ For all your chiropody requirements
- ◆ Nursing & Residential Homes welcome
- ◆ Medical pedicures
- ◆ Home visiting service

Registered member of the British Association of Foot Health Professionals

Country Quality Meat

HIGH CLASS BUTCHERS

10 Old Market, Nailsworth, Glos GL6 0DU
Tel: 01453 835058

PETER SAVAGE

FENCING & GATES SUPPLIED & FITTED
FIREWOOD – LOGS & KINDLING
JCB EXCAVATIONS – DRIVES, FOOTINGS, ETC.
SOIL, GRAVEL & hardcore SUPPLIED

Tel: 01453 833239

THE FRIENDS OF TETBURY HOSPITAL

If you have been to the Hospital lately you will have seen that the construction of the new Outpatient Building is well underway. It is scheduled to be open and working by the end of September 2008.

This modern medical unit will house 5 consulting rooms and a small waiting area. The two existing consulting rooms in the main building will be refurbished and additional car parking will be provided. The new larger outpatient facilities will allow the Hospital to provide significant additional opportunities for the local community;

An increased number of Consultant-led clinics available for you when needed,

A wider range of Consultant specialities that you can use, and

Care for you and all patients in a modern high standard medical unit

The budget cost of the new Outpatient Unit, with additional car park and associated works, is £375,000. The Tetbury Hospital Trust will meet some of the cost from the Endowment Fund and income generated from the Hospital's normal business. Further funds will be provided from the Friends' reserves. But the cost of the project will seriously deplete the financial reserves of the Hospital and the Trustees have asked the Friends to raise £150,000 by September 2009 in order to restore these reserves.

I am writing to all those people who have previously made donations to the Hospital and to those who have supported previous fund-raising events but are not regular donors. We are very grateful for your previous help and support. **Please can you make a donation this year to help us with our large fund-raising task.**

Please contact Elizabeth Buchanan, your local Village Representative for the Friends of Tetbury Hospital Trust, on 01453-833016, for further information.

Yours sincerely,

A.J.Gordon

Chairman, Friends of Tetbury Hospital

AVENING & CHERINGTON CRICKET CLUB

Back by popular demand ...

QUIZ & CURRY NIGHT



Avening So-
Saturday
7.30pm

cial Club
25th October

Teams of 4 / £5 per person to include a curry.

For further info. please call
Derrick Ind (835752) or
Sarah Smith (836014)

Avening Parish Council

Avening Parish Council September 08

New Planning Applications – August/September

- | | |
|---------------------|---|
| <u>08/02227/FUL</u> | Coach House, Avening House, High Street, Avening, GL8 8NH
Proposal: New dormers on rear elevation, conversion of adjacent workshop to games room. New single storey stair link to games room. Enclosure of porte cocheres into habitable rooms using glass screens. Members had no objections |
| <u>08/02499/FUL</u> | 50 Sandford Leaze, Avening, GL8 8PB
Proposal: Retrospective application for flue – Members had no objections |
| <u>08/02611/FUL</u> | Orchard House , 21 West End, Avening GL8 8NE
Proposal: New porch and driveway – Members had no objections |
| <u>08/02054/FUL</u> | Avening Mill, Mill Lane, Avening, GL8 8PD
Proposal: Change of use from workshop , commercial and office use to residential – Members would seek an extension from Cotswold District Council to be able to look closely at the plans and make comment |

Decision Notices Received

- | | |
|--------------|---|
| 08/01743/FUL | Hillside Cottage, 53 Nags Head Lane, Avening, Tetbury, Gloucestershire, GL8 8NZ
Proposal: Erection of first floor extension
Date decided: 25 July 2008
Decision: Application Permit |
|--------------|---|

- 08/01637/FUL Pimbury Farm, Tetbury, Gloucestershire, GL8 8SF
Proposal: Extension to provide dining room and entrance lobby
Date decided: 05 August 2008
Decision: Application Permit
- 08/01920/FUL The Boat House, Gatcombe Water
Proposal: Construction of a timber landing stage and boat shelter for storage of two fishing punts underneath and metal fisherman's hut
Date decided: 15 September 2008
Decision: Application Permit

Appeal Notices Received

APP/F1610/ Avening Social Club – appeal re retention of
A/08/2082919/ smoking shelter and outdoor seating area
NWF

Autumn Village Clean Up

The Autumn Village Clean Up will take place on Saturday 8th November from 10.30am to 12.30am. Please meet at the Village Hall to collect your litter picking equipment. All welcome!



**The Next Meeting of Avening Parish Council will be held on
Thursday, 16th October 2008 at the Village Hall.**

*Deborah Cook, Parish Clerk, 28 Partridge Way, Cirencester,
Gloucestershire GL7 1BQ Tel: 01285 656139
Email: parishclerk@avening-pc.gov.uk*



Don't Waste Wildlife



Gloucestershire

Worms work !

A wormery is both an education and a great way to compost your kitchen waste. They're also ideal if you don't have much garden space and fit easily on a balcony or other sheltered spot. Worms aren't partial to extreme hot or cold temperatures and work best between 15-25°C. Wormeries are based on the same composting principles as a compost bin, but cooked waste and some other food types can be added. Normally, these food 'wastes' are omitted from the normal bin to avoid attracting vermin. Wormeries are sealed units; allowing oxygen in but keeping out other beasts that might be interested in cooked foods.

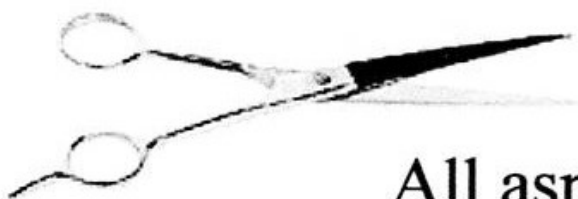
Composting worms are different to the common earthworm. The brandling or tiger worm is considered one of the best composting worms and can consume your compostable waste and convert it to rich worm compost.. Worms can be collected from a manure heap or purchased by the bag full!

There are a variety of wormeries on the market, including the popular Can'o'Worms. It is entirely possible to make your own wormery for much less cost - a shallow, well aerated container is best. Once set up, try not to overfeed them ~ little and often is best.

Watch out, however, the worms might hook *you* into a bit of an obsession!

For more information on wormeries and compost please contact your local Compost Officer, Kate Newman, 0790 2248814 compost-kate@phonecoop.coop

Brookes Hair & Beauty



Unisex Salon
Free Consultation

All aspects of Hairdressing

Appointments not always necessary

Matrix Stockist – retail products for sale
Gift Vouchers available

10 High Street
Minchinhampton

(01453) 883076

Open
Tuesday-Saturday

Brookes Beauty

Professional Friendly Approach to Beauty



dermalogica
a skin care system researched and developed by The International Dermal Institute

**Dermalogica Facial/Body Treatments
Manicures & Pedicure
Eyelash/Brow Tinting & Shaping
Waxing & Massage**

Open
Tuesday – Saturday

Gift Vouchers
Loyalty Card
Introduce a Friend Scheme

Dermalogica Stockist – Full range of retail products for sale

Call Vanessa on (01453) 887822

10 High Street, Minchinhampton, Stroud, Gloucestershire, GL6 9BN

Fred Stevens

Funeral Directors

- Long established and family owned
- Reliable 24 hour service
- Unique, individual and personal approach
- Traditional and alternative funerals arranged

Newmarket Road Nailsworth

Telephone 01453 832188

email@fredstevens.co.uk www.fredstevens.co.uk

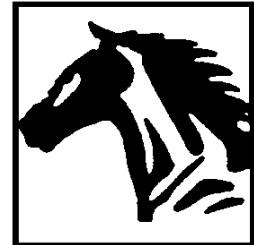
THE GEORGE VETERINARY GROUP

www.georgevetgroup.co.uk



TETBURY 23 Church Street.
01666 503531

MALMESBURY High Street
Surgery 01666 823165
Equine 01666 826456
Farm 01666 823035



Full 24 hour hospital centre for pets.

Equine clinic with in patient examination and exercise facilities
Please telephone – all enquiries personally answered

O.L.Cottle **Family Business**

Hand Carved Memorials : Cremation Plaques
Additional Inscriptions : Renovations and Cleaning
All Types of Stonework

Tel: 01453 762877
36 Slad Road, Stroud, Gloucestershire

DATES FOR YOUR DIARY

DATE	EVENT	PLACE	TIME
October 3rd	School Open Day Playgroup Open Day	Avening School Avening Playgroup	9.30 -12 9 30 –12
October 9th	WI meeting	Avening Village Hal	
October 25th	Cricket Club Quiz	Social Club	7.30 pm
November 8th	Village Clean-Up	Avening: starts at the Hall	10.30 – 12.30
November 9th	Remembrance Day Service	Avening Church	10.50 am
November 19th	WI Shopping Trip to Coventry	From Avening & Tetbury	8.30 am
November 25th	Coffee Morning in aid of Avening Church	Court Lodge, Avening	10 am – 12 noon

THE MOBILE POLICE STATION

Visits in September:

10th	Avening	9-10 am
	Cherington	10.15-11 am
23rd	Avening	1.30-2.30 pm
	Cherington	2.45-3.30 pm

FIVE VALLEYS MOBILE LIBRARY

The mobile Library operates in this area on alternate
Fridays. The dates Oxctober are:

10th & 24th

The Green, Cherington

1230 - 12.50

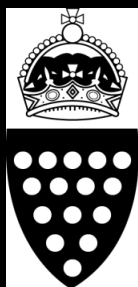
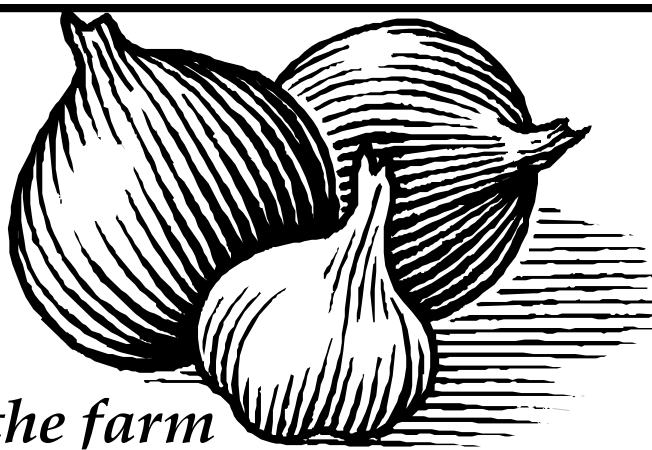


Useful Telephone Numbers

Avening Parish Council Clerk	Deborah Cook	01285 656139
Cherington Parish Council	Sue Russell	01666 503370
Cotswold District Councillor	Jim Parsons	01453 836596
Avening Sunday School	Debbie Brown	01453 835983
Avening Tower Captain	Andrew Lelliott	01453 835783
Avening Primary School	Diana Boulton	01453 833191
Avening Playgroup	Debbie Brown	01453 832695 Home 835983
Avening Village Agent	Carolynn Dent	0781 0630156
Avening Players	Julie Sharpe	01453 835565
A & C Cricket Club	Derrick Ind	01453 835752
Avening Silver Band	Jim Hill	01453 834438
Friends of Avening School	Clare Steele	01453 832712
Cherington Reading Room	G Davies	01285 841318
Memorial Hall	Simon Wheatley	
Tennis @ Avening Park	Roger Lindley	01453 835115
Avening Group Oil Coordinator	Frances Lindley	01453 835115
Tetbury Hospital		01666 502336
Stroud Hospital		01453 562200
Avening Post Office		01453 832008
Women's Institute	Pat Taylor Jo Harwood	01453 833408 01453 8337-5

Seasonal Organic Vegetables

delivered fresh from the farm



DUCHY HOME FARM

Tetbury, Gloucestershire

For more information about our Vegetable Box Scheme

Call us on **01666 503507**

Or email: **vegbox@duchyhomefarm.org.uk**



TELEPHONE & BROADBAND PROBLEMS?

**Forget call centres, for personal attention
call Brian Cooke, your local telephone engineer.**

No call-out charge within 15 miles of Stroud.

**Save money on expensive telephone calls from Telephone
line suppliers & maintenance companies, BT and others.**

**Call me first to diagnose your telephone line &
wiring problems in your home, noisy line, etc..**

Telephone extension sockets provided & repaired.

External extension bells supplied & fitted.

20 years experience. BT trained.

Broadband faults undertaken.

Not VAT registered

Stroud 01453 758990

Mobile: 07792 203886

Website: www.phones-r-me.co.uk

