

The Villager

**A Magazine for Avening, Cherington
and Nags Head**

July 2015

***Avening Playgroup Needs You
Special AGM 15th July***

editors@acvillager.co.uk

THE WEIGHBRIDGE INN

The home of the famous '2in1' pie

Full menu served all day every day



Opening Times:

Mon to Sat - Midday

to 11.00pm

Sun – Midday to

10.30pm

Longfords

Minchinhampton

GL6 9AL

Tel: **01453 832520**

'bake at home' 2in1 pies

available to collect now!



July 2015

The editors were delighted to receive Villager of the Year Award at the recent Avening Annual Village Meeting. Two other Villager of the Year Awards were made; one to Cassie for her work with the Youth Club and the other to Alex for her work for the school library. At the same time, Jim Parsons was honoured for his hard work for the village over many years. Congratulations to all the Award Winners.

Although the Editors were the grateful recipients, this was an award made to the whole team, which includes Riley for proof-reading and Cas, Wendy, and Gwyneth, without whose efforts organising distribution and advertisements, the Villager wouldn't survive. To be recognised by the community in this way is heartening for all of us. It is obvious that the magazine is widely read and we were appreciative of the positive feedback given at the meeting, on the subject of the new format. Any pleasure our readers derive is equally matched by the editors' enjoyment of the many topical and interesting articles and letters which we receive from you each month.

Keep them coming without you, the Villager would be so much less rewarding for readers and editors alike!

And finally, we're sure you would like to join us in wishing co-editor Derrick a speedy recovery and hope he is home from hospital soon.

The Villager Editors

The Villager Magazine

Editors	editors@acvillager.co.uk Jane Archer, Frances Conway and Derrick Pierce. 07812 137161 (Jane) 01453 832177 (Frances) 01453 835090 (Derrick)
Advertising	editors@acvillager.co.uk, Gwyneth Simpson 01453 836556
Deliveries	Cas Boddam-Whetham 01453 834834
Deadline	18th of each month

Photographs in The Villager Magazine

Many thanks to **Derrick Pierce** for our cover photo of a tree coming into leaf near Longman's Barn Farm. If you have a photo of Avening or Cherington which you would like to share with us, please feel free to send it to us. You never know, it might turn up on the front cover...!

editors@acvillager.co.uk

Contacts for the Villages

A and C Cricket Club	Derrick Ind	01453 835752
Avening Angels	Derrick Pierce	01453 835090
Avening Art Group	Mick Williamson	01453 836318
Avening Oil Coordinator	Frances Lindley FIndly4@aol.com	01453 835115
Avening History Project	Fred Venning	01285 850624
Avening & Cherington Rector	Rev. Poppy Hughes	01666 502333
Avening and Cherington Churches Reader	Derrick Pierce	01453 835090
Avening Church Churchwardens	Stephanie Hamilton Stephen Uzzell	01453 834910 07807 700004
Avening Church Flower Team	Doreen Pierce	01453 835090
Avening Church Organist	Colin Chambers	01666 880026
Avening Church PCC Treasurer	Peter Best	01453 835287
Avening Parish Council Clerk	Caroline Braidwood	01285 380041
Avening Playgroup	Debbie Brown	01453 832695
Avening Primary School	Jane Rushton	01453 833191
Avening Silver Band	Jim Hill	01453 834438
Avening Bell Tower Captain	Steve Uzzell	07807 700004
Avening Village Agent	Aileen Bendall	07810-630156
Avening Youth Club	Cassie Vickery	01453 834182

Avening Memorial Hall		07583 073604
Cherington Village Hall	Beryl Milsom	01285 841248
Cherington Parish Council Clerk	Frances Ashfield	01453 767384
Cherington Church Churchwardens	Roger Gegg John Bate-Williams	01453 834805 01666 503544
Cherington Church Flower Team	Elizabeth Workman	01285 841294
Cherington Church Organist	Elizabeth Workman	01285 841294
Cherington Church PCC Secretary	Elizabeth Workman	01285 841294
Cherington Church Sacristan	Beryl Milsom	01285 841248
Cherington Church PCC Treasurer	Paul Cable	cabes50@yahoo.co.uk
Cotswold District Councillor	Jim Parsons	01453 836596
Friends of Avening School	Lucie Hawkins	01453 833191
Over 60s Lunch Club	Christine Howell	01453 833246
Stroud Hospital	Reception	3000 421 8080
Tetbury Hospital		01666 502336
Women's Institute	Gwyneth Simpson	01453 836556

VILLAGE & AREA WEB SITES

Avening Parish Council WWW. avening-pc.gov

Avening Church www.aveningchurch.info

Cherington Village www.timeldridge.typepad.com

Cotswold District Council WWW. Cotswold.gov.uk

What's On In Avening and Cherington

Please let us know if we have forgotten any regular event or if there is something you would like to have included here.

Event	Day	Time	Where	Contact
Line Dancing	Monday	7.30 - 10.00pm	Social Club	Mel 01453 833760
Flamenco Dancing	Monday (excluding school and bank holidays)	7.00 - 8.00 pm	Memorial Hall	Lina Wirths 07417451815
Cherington PC	4th Tuesday Bi-monthly	6.30pm	Village Hall	Frances 01453767384
Youth Club	Tuesday	6.15 - 7.45pm	Memorial Hall	Cassie 01453 834182
Bell Ringing	Tuesday	7.30pm - 9.00pm	Church Bell Tower	Steve 07807 744444
Line Dancing	Tuesday	7.45 - 10.30pm	Social Club	Mel 01453 833760
Yoga	Wednesday	7.30pm - 9.00pm	Memorial Hall	Elles 0781 555 2952
Over 60s Lunch Club	1st Wednesday each month	12.30pm	Social Club	Christine 01453 833246
Dial-a-Ride	Thursday	9.30am		Liz Truman 01666 502514
WI	2nd Thursday each month	7.30pm	Memorial Hall	Maisie 01453 834679
Avening PC	3rd Thursday each month	7.30pm	Memorial Hall	Caroline 01285 380041
Avening Art and craft Group	Thursday	10.00am	Longmans Barn	Mick 01453 836318
Avening Angels Choir	Sunday	4-30pm	Various	Derrick 01453 835090

Avening Playgroup Needs Your Help!



Thank you to everyone who came to our meeting at Playgroup on the 8th June. We now have some volunteers who will join the playgroup committee in July.

However, we still urgently need volunteers to become the Chair and Secretary and Treasurer. These posts can be held by anyone, you don't have to be a parent of a child currently attending playgroup.

If you are able to help us by taking one of these roles from July or with fundraising, please telephone Playgroup any morning on 01453 832695 or call Pip on 07526 187292 to let us know.

Our AGM will be held at Playgroup on Wednesday 15th July at 7.30pm in the Playgroup, anyone interested is welcome to join us.



'Salt and Pepper' - orphan lambs hand reared by bottle by Eric Carter. First 'outing' to Avening Primary School at one week old.

Photo taken by Eric (aged 12 years)

Submitted by Celia Carter

Letter From Avening Parish Council Leader



As we approach the end of the academic year, and school reports are handed out to nervous students, I thought I would be fun to join my teacher friends, and issue a report for the village institutions. So, with tongue firmly in cheek:

The Church – got into some fights this year, and as a result has fallen out with a number of friends. Will need a little love and affection to put this behind them.

The School – Another strong performance, but suffered an unexpected dip in attendance this year – I'm sure things will be back to normal next term.

The Playgroup – Received an excellent report earlier in the year, but has struggled a little to keep up with the pace of change, and doesn't really want to stay all day. Have asked playgroup to sit next to the school for mutual support, so they can develop stronger together.

The Villager – This year's star pupil! Very popular with all ages, and tries to speak to everyone – has grown in confidence since having a recent makeover.

Playing Field – Must try harder. Has failed to complete homework on time, and gets distracted by playing on the bike. Looks quite dishevelled, and hasn't really progressed from the 1970s, despite some promising ideas.

Village Hall – Has been suffering this year following a loving parent's departure, but a new partner is helping to get back on track. May still need additional support.

Local Roads – Still bottom of the class, and has fallen well behind what is required. Makes occasional efforts when pushed, but needs to work much harder.

And finally:

The Parish Council – Often feisty, and can be argumentative. This could lead to a trip to the head's office or detention, but with a little discipline should make a big contribution.

Annual Parish Meeting

Thanks to everyone who came, and those who helped set up the displays and catering. Congratulations to all of our Villager of the year winners, and also for Jim's lifetime of service award. We had some great feedback and ideas, so watch this space for developments.

Tony Slater
Chairman, Avening Parish Council

Letter From the Parish Priest



I hope, like me, you are still enjoying your memories of the wonderful fete on Sunday 7th June. Wasn't it a wonderful community occasion! We were so blessed with lovely sunshine, and there was such a happy buzz all around the village. It was great to see so many people enjoying the stalls, games, music, arts and crafts, and delicious things to eat ... not forgetting all the entertainment of the dog show!

So many thanks to everyone who made the fete possible: to Stephanie Hamilton and her team for all the planning through the year, and organising the day; to everyone who made donations and worked on the stalls and games; and to all who came along.

And thank you for all the money we raised to support the work of the church - and in particular to maintain our lovely church and church yard. Of course, in one way, we don't need a building to worship God - we can do that anywhere. And yet it lies at the heart of our life together. It is the place where generations of families, friends and neighbours have come together for christenings, weddings and funerals, committing to God these events of our lives. The place we meet each week to worship God and pray for ourselves and the world. And the place where we come together as a community through the year at the great festivals like Christmas, Easter, Harvest and Remembrance Sunday. Our church is a heart in the community, a sacred place, where heaven and earth meet, and we can connect with God and with each other in his loving presence. Thank you for all you do to support our lovely building with money raised at the fete and through the year.

At the fete, you may also have met the Reverend Canon Michael Irving and his wife Clare. Michael is a retired priest, living now in Painswick, and I am delighted he will be with us over the coming months, leading our services in Avening and Cherington. I'm sure Michael is already well known to many people, having served as a parish priest in four parishes in Gloucester Diocese, the last in Minchinhampton where he was Rector for 12 years. And he is actively involved in local life, including his role as a Deputy Lieutenant of Gloucestershire. It is great to have Michael with us, and our thanks to him for all he is doing.

I hope you have a happy month, enjoying the summer.

With love and prayers,

Poppy

The Revd Poppy Hughes, Parish Priest
The Benefice of Avening with Cherington

Avening Village Meeting



Tony presents Frances and Jane (Villager Editors) and Cassie (Youth Club) with their 'Villager of the Year' awards



Tony Slater, Avening Parish Council Chairman



Jim Parsons is presented with a special award for his many services to Avening



David addresses a few questions about the plans for a community village shop

Many thanks to Julian Charrington for these photos from the Avening Village meeting on June 4th.



Avening Church Fete



A huge thank you to all those who helped in any way with this years very successful fete: - setting up, clearing, organising ducks and dogs, art and craft, stall holders, bell ringers, the WI for their lovely teas and the Playgroup for looking after the children, Stephen for all his hard work getting the churchyard ready and thanks to Nick for our amazing flags!



Also thank you to everyone who came and supported on such a wonderfully hot, sunny afternoon. Judging by all the positive feedback a really happy time was had by all.

***Stephanie Hamilton - Fete committee
Chair***

(and thanks to Hazel Redding and Julian Charrington for these photos. More in a later edition - Eds)

Nailsworth Domestic Appliance Repairs

A reliable, fast & friendly service

Washing Machines,

Dishwashers,

Tumble Dryers,

Fridge-Freezers,

Electric Cookers . . .

No Call - out Charge

01453 ~ 833310

Avening W.I.

This being the Centenary Year of the W.I. there have been many additional events planned. Firstly, one representative from each W.I. in England and Wales was invited to a garden party at Buckingham Palace. I was the lucky one from a ballot of those wishing to attend. It was an extremely windy afternoon and many of the ladies' hats were seen rolling across the Palace lawns with their owners in pursuit! There were four Royals in attendance; the Duchess of Cornwall (who is a member of Tetbury W.I.), Sophie Wessex, Duchess of Gloucester, and Princess Alexandra. We were given a very elegant tea and entertained by 2 military bands. There was plenty of time to stroll around the gardens which were surprisingly informal but very beautiful.

Two days later another representative from Avening, Di Wall, attended the A.G.M. and conference at the Albert Hall. The Queen, Princess Royal and Sophie Wessex attended and the Queen cut a centenary cake. The main speakers at the conference were Lucy Worsley who is preparing a TV programme about the history of the W.I. and Baroness Tanni Grey-Thompson, the Paralympic athlete.

Our own more humble events have continued with another enjoyable walk around Amberley. Our speaker this month was Diane Gaskins who gave a summer cookery demonstration preparing 4 different dishes at the same. Her simple pea and mint soup was really delicious.

The ladies of the Avening W.I. provided refreshments at the Village Meeting and teas at the very successful Village Fete. They were extremely busy all afternoon and the cream teas were much admired!

The summer coach outing to Hampton Court Castle and Gardens near Leominster will be on 13th August leaving at 9 a.m. near the Village School. The cost will be £20 or £18 concessions. Everyone welcome. This should be a really enjoyable day. Please ring me to book your seat on 836556.

Gwyneth Simpson

Small Ads

Space wanted, to rent or buy, for parking a small motor caravan on a regular basis.

Please contact Sandie on 834175.

W.I. Coach Outing
to the beautiful

**Hampton Court
Castle**
and Gardens

13th August 2015
Avening School
9.00am

£20 (£18 concessions)
All Welcome

Contact
Gwyneth Simpson
836556

**BELL
HOUSE**
Dental Practice

- **Dentistry for all the Family**
- **Private and Denplan**
- **Cosmetic treatment**
- **Tooth whitening**
- **Hygienist**

 **Denplan**
At the heart of dental care



Robert W. Carter B.D.S.
7 New Church Street . Tetbury . Gloucestershire . GL8 8DS
Telephone (01666) 503788

0100315



Avening School

It's that time of the year again!

It's hard to believe that we've come to the end of another school year... already! This year has flown by, but when you look back at everything that has happened - the sports events, the school trips, the school performances and concerts, the visits, the after school activities, and not to mention the constant learning, perhaps it is time for a holiday! However, before we reach the end of term, there are still some exciting things planned, including our Y6 leavers' tea party for parents and supporters of the school and our annual school summer fete. Organised every year by FOAS, the summer fete is always the perfect way to combine essential fundraising with plenty of fun! This year we have firm favourites including teas and cakes, the Avening boat race, our amazing Avening second-hand bookstall, class run stalls and brand new additions to our line-up such as our mystery Wonka trail and performances including country dancing and cheerleading.

Join us on Saturday 11th July - 12 – 2.30pm.

Money raised will go towards paying coach expenses for next year's school trips and sports events, providing new books for our library and classrooms, equipping the classrooms with new furniture and updating our IT equipment with tablet computers and touch screen whiteboards.

School is also having an 'arts week' inspired by the four elements – Earth, Air, Water and Fire. We have a team of professionals joining us to enrich the learning, including an artist, musician, fashion designer and story-teller. The week will culminate in a performance and celebration for parents, to include a

much anticipated catwalk show!



At the end of June, we celebrated all things sporty with our annual school sponsored walk, followed by our School sports morning the next day. Our Y5/6 Owls Class also had a fantastic time on their residential trip to

South Cerney where they took part in activities such as raft building and paddle boarding.

Summer term wouldn't be complete without our annual Musical Soiree – always a highlight of the year and this year was no exception with inspiring performances



from both our KS1 and KS2 choirs as well as our violinists and guitarists.

As always the last week of term promises to be an emotional one with fond farewells and good luck to all our Y6 leavers as they embark on exciting new adventures in secondary school and also to our Owls class teacher, Ms Geller, who will be joining the team at Nailsworth Primary School in September as Deputy Headteacher. We wish Ms Geller and our entire Y6 all the best for the future and look forward to welcoming our new reception pupils in September, as well as a new teacher for our Owls class, Miss Smith.

On behalf of all at Avening School, thank you for your support throughout this past academic year and we look forward to starting afresh in September.

A wonderful Summer to you all!

Alex Adcock

Avening Youth Club

The Youth Club meets every Tuesday evening

Avening Memorial Hall

6.15 to 7.45 pm

Youth Club dates and activities are:

June 2nd Young Glos

June 9th Simon

June 16th Simon

June 23rd Simon

June 30th Young Glos

July 7th Simon

July 14th Simon

Everyone welcome!

ABJL Home **Improvements**

SPECIALIST IN ALL TYPES OF HOME MAINTENANCE

Roofing

Replacement tiles & ridges

Gutter repairs

Chimney repairs & maintenance

Rubber flat roofing

Walls regrind & repointed

40 years experience

Call JOHN for a FREE quotation and advice

07900 320197 or 07584 781967

Free phone 0800 6965381

Email : abhomeinprovements@aol.co.uk



NAILSWORTH ACCOUNTANCY

**ACCOUNTANCY SERVICES FOR SELF EMPLOYED AND
LIMITED COMPANIES**

Self-Assessment Tax Returns

Accounts Preparation For Small Businesses

Company Accounts

Business Start Ups & Company Formations

VAT Returns and Tax Planning

For a competitive quote telephone Emma

01453 835050

TOWN HALL NAILSWORTH

AVENING SCHOOL



Saturday 11 July 12.00 - 14.30



**Avening Boat Race Bouncy Castle
Teas & Homemade Cakes Pimms
Face Painting Fireside Forest School
Craft Stalls Avening Angels Sand Art
Book Stall Pork Rolls Bottle Stall
Country Dancing Amazing Raffle
Class Run Stalls Hook a Duck
Ice Cream Wonka's Mystery Tour
and so much more!**

For more information please email admin@avening.glous.sch.uk



PETER JOY

Sales & Lettings

Nailsworth: Sales – 01453 833747 / nailsworth@peterjoy.co.uk
Lettings – 01453 833847 / lettings@peterjoy.co.uk

Stroud: Sales – 01453 766333 / stroud@peterjoy.co.uk

PROUD SUPPORTERS OF AVENING PLAYGROUP



**PLUMBING
AND HEATING**

**BOILER SERVICE &
SYSTEM MAINTENANCE**

**FOR OIL BOILER AND AGA/RAYBURN
SERVICE**

Tel: 01666 504911 or 07867 434345

or email:

info@indplumbingandheating.co.uk

OFTEC REG. NO: C4634

Grant Boilers Accredited Installer
www.indplumbingandheating.co.uk

IT Support & Consultancy

Business, Mobile and Home Computing

*Trusted, expert support to
help you get the best
from your Windows
and Apple Mac
based IT.*



Call or Email us Today:

(01666) 840244

paul@trapnelltechnicalsolutions.co.uk

www.trapnelltechnicalsolutions.co.uk



NEW YEAR RESOLUTION!

Learn French

with native speaker
20+ years experience
all levels

FREE INTRODUCTORY LESSON
call Sylvain on 07779 819602

Avening Film Club

Wednesday 8th July 7.30

THE SECOND BEST EXOTIC MARIGOLD HOTEL

Drama, Comedy, mild bad language, sex references

Cert: PG – Run time: 2 hr. 2 min.

Cast & Crew: Bill Nighy, Maggie Smith, Richard Gere, Judi Dench, Dev Patel, Penelope Wilton, Celia Imrie, Tamsin Greig, David Strathairn, Ronald Pickup

Director: John Madden



Now that The Best Exotic Marigold Hotel is full up with its long-term residents, co-managers Muriel Donnelly (Maggie Smith) and Sonny Kapoor (Dev Patel) have a dream of expansion, and they've found just the place: The Second Best Exotic Marigold Hotel. With plans underway, Evelyn and Douglas (Judi Dench and Bill Nighy) venture into the Jaipur workforce, wondering where their regular breakfast dates will lead. Meanwhile, Norman and Carol (Ronald Pickup and Diana Hardcastle) navigate the swirling waters of an exclusive relationship, as Madge (Celia Imrie) juggles two very eligible suitors, and recent arrival Guy Chambers (Richard Gere) finds a muse in Sonny's mother, Mrs. Kapoor (Lillete Dubey) for his next novel. As his marriage to Sunaina (Tina Desai), the love of his life, quickly approaches, Sonny finds his plans for the new hotel making more claims on his time than he has available. Perhaps the only one who may know the answers is Muriel, the keeper of everyone's secrets. As the big day nears, family and guests alike find themselves swept up in the irresistible intoxication of an Indian wedding.



**Manufacturers of purpose made
joinery of all types**

Tel: 01453 885075

Email gkjoinery@googlemail.com www.gkjoinery.com

CHERINGT

Sunday July 26t

Stalls include:
Cakes, Books & CDs
Plants, Bottles,
Nearly New Clothes
Tombola, Games

*Do pick up a b
the competition
us for a gre*

★ **Grand**
Draw a

★ **Children's Games,
Craft Activities, and
Competitions**



Avening S
Teas & Ref
Stalls through
Parking &
Road through
Parking at both

ON SHOW

h from 2.00pm

*brochure, enter
s come and join
at afternoon*



Raffle



at 5 pm

Competitions:

**Flower, Vegetable &
Handicraft. Cookery,
Flower Arranging, and
Photography PLUS
Children's Classes**

Silver Band

Refreshments

out the village

£1 per car

village closed.

ends of village



**Fun Dog Show
from 3pm**

Letters to the Editors

Dear Editors,

Just a quick note to say Avening Silver Band were very grateful for the donation of money collected from the funeral of June Jellyman recently. She loved our band and although not playing for the last few years she would regularly attend fetes and sit nearby to enjoy listening to us.

If any of your readers are interested in playing with us we would be very pleased to welcome new players. We can lend instruments. We practice on a Monday evening at Minchinhampton Baptist Church at 7.30pm. We play at various summer fetes and at Christmas time lots of carols. To boost numbers, players from King Stanley band and Woodford band join us.

You are never too old to start!

For more information please contact our band master, Jim Hill, on 01453 834438/01453 834438.

Emma Evans, Avening Silver Band

The Editors are always happy to receive and print letters of concern or interest to the people of Avening and Cherington, but reserve the right not to publish if we consider they are inappropriate or offensive. We stress that letters represent the opinion of the writer and not necessarily that of the Editors or the Villager Magazine.

HOLIDAY LET

THE BAKEHOUSE, PORT ISAAC, CORNWALL

A traditional fisherman's cottage, sleeps 2, in the heart of this historic village. Located some 60 metres from the harbour, restaurants, pub and the South West Coastal Path. Tintagel, Trebarwith, Polzeath and Padstow are all nearby.

Available from April - October.

**Please contact : Sheelagh O'Kelly or Robin Maryon on
01453 833474 for further details.**



Fred Stevens Funeral Directors

We give immediate attention – 24 hours
Traditional and contemporary styled
funerals arranged

Individual, flexible approach

Well established, family-owned company with highly
experienced staff

Newmarket Road, Nailsworth, Gloucestershire GL6 0DQ

telephone 01453 832188

email@fredstevens.co.uk www.fredstevens.co.uk

Do you have a mole problem?

With over 30 years experience in traditional mole control I can effectively, discreetly and humanely remove the culprit(s)! No gas, chemicals or poisons used and completely safe to children and pets.

No Mole – No Fee!

07766 132934 (Days) 01285 770968 (Evenings)

www.gbstateservices.com

Member of the British Traditional Molecatchers Register. Member of the Guild of British Molecatchers
BPCA/RSPH level 2 certificate in pest control. Fully insured and references available

Call now for a free, no obligation site survey and quote.

O.L.Cottle Family Business

**Hand Carved Memorials : Cremation Plaques
Additional Inscriptions : Renovations and Cleaning**

All Types of Stonework

Tel: 01453 762877

36 Slad Road, Stroud, Gloucestershire

People For You ... provides regular companionship and friendship.

Do you sometimes feel that you have no one to talk to you? Or, do you sometimes feel you are missing the opportunity to share an experience with someone you can trust, someone who can visit you on a regular basis providing company, a listening ear, and offering the hand of friendship.

We would like to take this opportunity to remind you about People For You and the service it brings to the community. People For You operates in Tetbury and surrounding areas.

People For You provides a volunteer befriending service offering regular companionship to the isolated, housebound, vulnerable and older people in our community.

We introduce a reliable, local volunteer who visits you regularly in the comfort and privacy of your own home. The volunteer will visit regularly – and their visits also provide a unique opportunity for the volunteer to let you know what is happening in your community.

It's a sad fact that with an ageing population, families scattered or no family at all, a lot of older people do not receive regular companionship and People For You tackles this very issue head on.

As we all celebrate VE Day, never let us forget that the older generation have some wonderful memories to share, such a rich vein of history to tap into - what a sacrilege if these memories were never shared, and consequently lost.

Needless to say, our volunteers are the lifeblood of the service, they bring joy, they bring pleasure, they bring a bit of gossip but, most importantly, they bring themselves. We simply couldn't exist without their support. And we have a lovely group of volunteers that visit in the community doing a wonderful, wonderful job. It is heart-warming for me, as project co-ordinator, to hear how both parties' lives are enriched.

So if you have the empathy and commitment to be a volunteer please do get in touch. We provide training, ongoing support and also an opportunity to forge new friendships. Remember – it only takes an hour a week to transform someone's life.

No-one needs to feel alone or un-heard - this service is here to support you.

Please contact Sue Black (project co-ordinator) on 07810 630167 / 01452 528491 or email sue.peopleforyou@grcc.org.uk



Kathryn Roberts and Sean Lakeman



Aveing welcomed the Internationally renowned folk duo of Kathryn Roberts and Sean Lakeman on Thursday 11th June when they played a superb concert in the Church of the Holy Cross.

An audience of over 70 enjoyed a 90 minute concert filled with beautifully crafted folk songs many of which came from their new album, *Tomorrow Will Follow Today*. Many of the songs were written by Kathryn and Sean, although several traditional West Country songs were woven into the program. At the interval, the artists mingled with the audience and answered questions as well as selling a range of their CD's like hot cakes.

At the end of the gig, the audience showed their appreciation by demanding an encore and a thoroughly good evening was had by all.

Peter Best

Church of England Educational Fund

Money from The Church of England Educational Fund is available to young people who are under 25 years old and live in the parish of Aveing to help with their education.



If you (or your children) need help from this fund, please apply in writing to the 'Educational Fund,' c/o Mrs Stephanie Hamilton, 2 Fairview, High St., Aveing, GL8 8LU

Applications should be in by 1st August 2015.

We look forward to hearing from you.

The Trustees

PETER SAVAGE

FENCING AND GATES SUPPLIED AND FITTED
FIREWOOD – LOGS AND KINDLING
JCB EXCAVATIONS – DRIVES, FOOTINGS, ETC.
SOIL, GRAVEL AND HARDCORE SUPPLIED

Tel: 01453 833239

dental
practice

townes
townes
associates

Family Dentistry You Can Rely On



www.familysmile.co.uk

Satisfaction rating:
more than 99%

100% of patients
asked would
recommend
us to family
& friends

Quote 'Villager' for a 50% discount on a full New Patient Examination
with x-rays for just £39.50. Telephone us on **01453 827474**



S Woodman Garden Services

General Gardening

Grass Cutting ~ Hedge Cutting

Tree Cutting ~ Fruit Tree Pruning

General Ground Clearance

Good Rates / O.A.P Discount

Please Call: Home: 01453 834744 Mobile: 07814206803

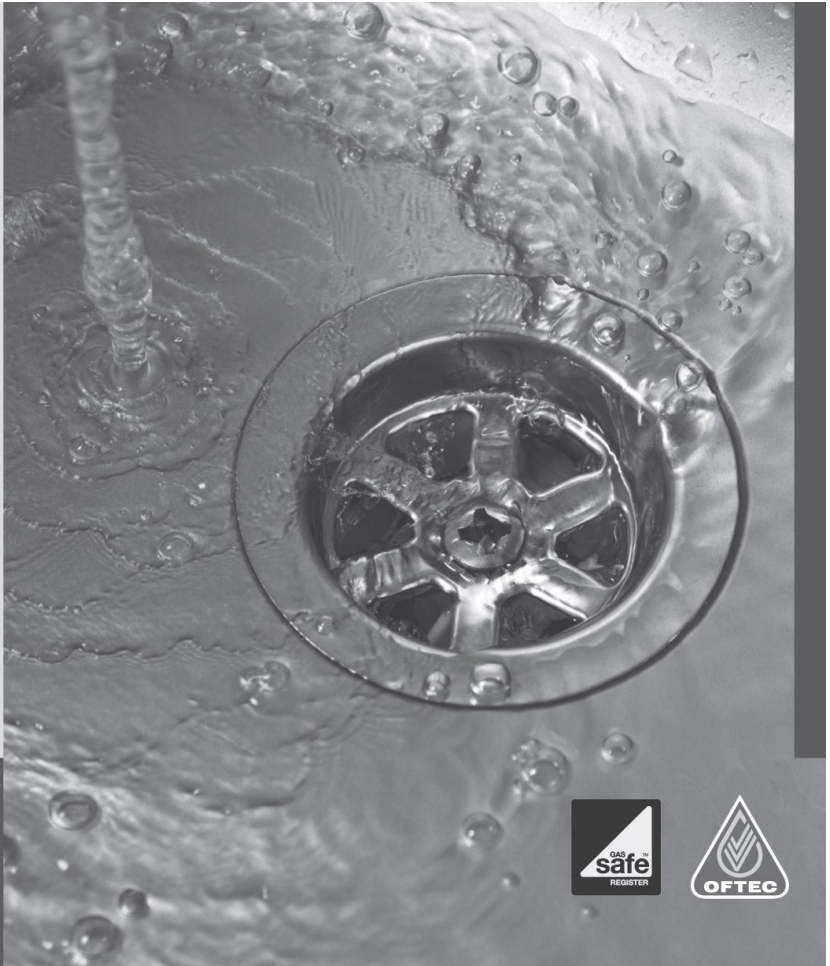




**Plumbing
& Heating**
(Cotswold) Ltd

- Oftec and Gas safe registered
- Boiler replacements
- New build and renovations
- Heating updates and alterations
- Underfloor heating
- Bathrooms
- Water softeners
- Over 35 yrs experience
- Tetbury based

Clive Alley t: 07584414624
Scott Wilkins t: 07717750247
e: scott@awplumb.co.uk
www.awplumb.co.uk



Dying without a Will. Now that's a real tragedy.

No-one likes the thought of dying, so it's hardly surprising that almost 3 out of 5 UK adults don't have a valid Will (*source: www.unbiased.co.uk 2010*). Yet having one is one of the most important arrangements you can make during your lifetime.

My name is David Martin. I live in Nailsworth and I'm the local consultant for *Steele Rose & Co* - one of the UK's Premier Professional Home Visit Will Writers. After 22 years serving my country in the RAF, I have spent the last 28 years of my life professionally advising my clients on all personal financial matters and specialising in Wills.

Writing a Will is easier and cheaper than you think. It also ensures that your wishes are carried out simply and efficiently - causing the minimum of anguish for those you leave behind. If you would like to discuss your Will arrangements, redraft an existing Will, Lasting Powers of Attorney, or other associated legal services, at a mutually convenient time in the comfort and privacy of your own home, please contact me:



David Martin

David Martin, local consultant,
Steele Rose & Co
(Nailsworth & surrounding areas)
01453 836699 (M) 07973 405997
Email: dcmartin@hotmail.co.uk
www.steelerose.co.uk
Members of the Society of Will Writers



Diary of a Self-Build

Part 7

After months of anticipation, the day finally arrived – at 9.30 the first truck arrived with our ‘flat packed’ house on board.



Within an hour or so, everything was unloaded, and the erection team were off to work. By the end of the first evening, we had the lower ground floor almost complete, and were ready to crack on the next morning. However, that’s when the problems started. There were a number of vital components that hadn’t been sent, and the next delivery wasn’t until the next day, so progress was minimal. But it gave us time to do the latest update for ‘Building the Dream’ (Charlie will be coming in August!), and spend some quality time with the architect.

Quite a good day on Wednesday, but then the erectors realised they had the wrong plans. Not only that, there were more bits missing, including a critical Glulam beam that hadn’t even been made! Originally, the suppliers said we wouldn’t need a crane, but due to the size of the steels we had to scabble around at the last minute to hire one. Mandy had a very high stress day on Thursday trying to sort everything out, with the help of Shaun and James, our builders.



At the end of week one, and after the G&Ts had done their magic, we could reflect on the overall success of the operation; there are still issues to overcome, but nothing that can’t be resolved. On the way we have tried to educate our young ‘urchin’ erectors that on a residential site, it is not acceptable to be ‘effing and jeffing’ loudly, and that they need to pay at least a passing nod to health & safety!

Tony and Mandy Slater

The Mobile Police Station

After June the Cotswold Mobile Police will stop all the routes in the Cotswolds and will start to cover the whole of Gloucestershire. This means it will still visit the Cotswold but will only visit the larger communities. It can still be booked to attend local community events

**by contacting PCSO Simon King by email:
Simon.King@gloucestershire.pnn.police.uk**



**plumbing
and heating**
YOUR LOCAL EXPERT

call today
01666
503632



Design and installation of efficient gas and oil fired heating systems

Boiler replacement and system upgrade including power flushing

Oil and gas fired boiler servicing

Complete bathroom design and installation including adaptations for the elderly

Hard water treatment & drinking water filters

Leadwork & Fibreglass Roofing

Alderton 4, Priory Park, Priory Industrial Estate,
London Road, Tetbury, GL8 8HZ
www.indplumbingandheating.co.uk



ICE ROCKET
DESIGN

Websites from £99

Cost effective websites for business

If you're considering a modern website design and development, Ice Rocket will give you the edge.



01453 839128
www.icerocket.co.uk

Down to Earth

'A tangle of honeysuckle is one of the essentials of the English garden. It is a link with our native hedgerows and with our earliest cottage gardens, and a symbol of our scorn of formal gardening and classical symmetry.' Thus wrote Stephen Lacey. (The Startling Jungle: Colour and Scent in the Romantic Garden). In Shakespeare's 'Midsummer Night's Dream', Titania slept:

'Quite over-canopied with luscious woodbine'.

Both the name 'woodbine', with its evocation of twining tendrils, and 'honeysuckle', referring to the nectar, are indicative of the plant's place in our native heritage.

Its fragrance is strongest in the evening when it attracts the pollinating moths, so a good position would be close to the house or entrance gate or forming a bower over a west-facing seat (so placed that the sunset may be enjoyed, wine in hand?). I planted five, a couple of years ago, yet still the most scented is the one that was already planted. (Does attractiveness increase with age, I wonder?)

Although I have a couple against a wall, this is not the best place, as you then need to provide a few pins and wires and inevitably the honeysuckle entwines and embraces itself. A three-dimensional structure, such as a tree, trellis or shed roof, provides a more suitable subject for clothing in 'luscious woodbine'. The semi-evergreen *Ionicera purpusii* 'Winter Beauty' is very fragrant and more of a bush than a climber, but be warned: it has a wayward habit and will go every which way it will.



Corner of the garden, Snowhill Manor

At Snowhill Manor, high above the Cotswold escarpment, you will find honeysuckles and red valerian clothing the walls and all manner of 'spilly', romantic plantings in a pleasingly eccentric series of garden rooms. To quote Stephen Lacey again, Snowhill Manor represents 'traditional England at its picture-postcard best'.

Charles Paget Wade (1883 – 1956) was an English architect and poet, gardener and collector, who bought and developed the gardens at Snowhill Manor in the 1920s. While his diverse and eclectic collections fill the house, the garden acquires its idiosyncratic character from features such as a 'nychthemeron', or wall-mounted zodiac clock, a figure of St George poised to strike a bell, and aphorisms painted on wooden boards. Garden furniture, doors and ornaments were all painted in his own paint mix, a kind of smokey turquoise blue. Highly individual, enchanting and worth a visit.

A similar shade of blue was used on all wooden structural work at the Chateau de Brécý, which we visited recently. Just as 'Wade blue' served to enhance the Cotswold stone and surrounding green at Snowhill, so the blue at Brécý enhanced the Caen stone used in the building there. Others use a red Japanese bridge to make a statement. We have one here in Avening! There is also a series of four or five in the water garden at Wilton House (Wiltshire). Biddulph Grange in Staffordshire, (shown here) designed by James Bateman, an archetypal Victorian collector of diverse exotica, has an enchanting Chinese temple and bridge, appropriately painted in red, green and yellow.



Biddulph Grange Chinese garden

Plant colour can make a statement, too. There is the bold, carefree abandon of unthemed variety; the calm, considered schemes of shades of pink, white and blue; the Jekyll-esque planning of 'hot' and 'cool' colours. Ah, yes. Then there is Christopher Lloyd. In his book 'Colour for Adventurous Gardeners' he urges us to be bold and embrace daring combinations. Nobody could do it quite like Christopher Lloyd. The photos in the book are of stunning plant partnerships and juxtapositions. But Great Dixter was – and is - a garden of dedication and high maintenance. If a plant were fading or failing, or the combination simply didn't work, it would be replaced, even if the replacement were still in its pot.

In our more modest ways, we can make statements with colour, too. In the year of the Jubilee (and in subsequent years, owing to failure of imagination) the six bowls opposite our front door were filled with red and white geraniums and blue lobelia. This year I planted pink geraniums and am glad I did: pink for Princess Charlotte and pink for Breast Cancer Awareness.

Marilyn Jones



Work with us and make a difference!

Looking for a role with **competitive** pay and job **satisfaction**?

Do you want to make a real difference to the lives of people with learning disabilities?

Hft is a national charity based in your local area with job vacancies.

Call HR Department on 01453 832201 or visit

www.hft.org.uk

Company registered in England No. 734984 Registered Charity No. 313069



TENNIS HOLIDAY CAMPS at Minchinhampton Tennis Club



Fun tennis based sports camp
suitable for children of all standards
aged 5 - 13 years



Monday 20th July to Friday 24th July
Monday 24th August to Friday 28th August
from 9am to 3.30pm

Book 4 consecutive days and get 5th day free
Half day and single day booking available

Full details and booking info at www.aburrowtennis.co.uk



TOAD HALL
TRULL FARM
TEIBURY
GL8 8SQ



Your own private room for lunches,
dinners, drinks, receptions, childrens
parties, business meetings, exhibitions,
film nights. Large screen and internet.

Kitchen plus smaller room
available. Outside or "inhouse"
catering. A marquee could be added if
required.

For Bookings and prices please contact :

Fi Mitchell

fimitchell06@btinternet.com

01285 841229 07885 094393

A DATE FOR YOUR DIARY
ON SUNDAY JULY 12th from 12-00 noon onwards

**PLEASE JOIN US FOR MUSIC AND A PICNIC IN THE GARDEN OF
LONGMANS BARN FARM, AVENING**



SINGERS, MUSICIANS AND PICNICKERS WELCOME
More details later

AVENING SOCIAL CLUB LTD

1 Woodstock Lane, Avening

Tel. No. 01453 833760

Interested in a game of Skittles, Darts, Pool or just relaxing over a social drink? Then a warm welcome awaits you at the Club.

Function Rooms are available for hire for a family party, celebration or other event at reasonable rates. The Pool table can be used by a minimum of 4 people free of charge.

Look out for details of events including Music, Quiz Nights and Bingo sessions. The Rural Cinema shows a film here every month.

To become a member will cost you just £4.00 a year.

We look forward to seeing you soon!

Problem Feet or Need Routine Foot Care?

- Corns/hard skin/callus removal
- Treatment of ingrown toenails
- Treatment of cracked heels
- Verruca treatment
- Advice on heel and ball of foot pain
- Nail trimming
- General and diabetic foot care
- Clearance of fungal foot and nail infections

MINCHINHAMPTON
FOOT CLINIC



Park House, Burleigh, Stroud,
Gloucestershire, GL5 2PH

Call Michele for an
appointment

Tel 01453 887001 or 07715
627611



The
GEORGE
Veterinary Group



www.georgevetgroup.co.uk

TETBURY

23 Church Street

Tel: 01666 503531

MALMESBURY

18-20 High Street

Hospital : 01666 823165

Equine Clinic : 01666 826456

Farm Vets : 01666 823035



Carpet and Upholstery Cleaning Specialists

- Ultra fast drying times
- Environmentally friendly
- Removes stains
- High temp – sterilises carpet
- Improves air quality
- Removes dust mites
- Fully insured

Barden Clean

CALL NOW

Michael Denley

01453 752893

07541 002 891

www.bardenclean.co.uk

Avening Parish Council and



Cherington Parish Council

Because of family illness and annual leave, there are no reports this month.

However, if you have any concerns, issues, queries or comments you would like to make relating to the Parish then please don't hesitate to contact the Parish Clerks: –

Cherington: Frances Ashfield on 01453 767384 or via email at cheringtonparishcouncil@yahoo.co.uk.

Avening: Caroline Braidwood, Parish Clerk, 77 Pheasant Way, Cirencester, Gloucestershire GL7 1BQ

Tel: 01285 380041 Email: parishclerk@avening-pc.gov.uk

Bidmead & Co.
craftsmen in natural stone



Bidmead & Co. are an
accomplished team of
natural stone construction
and restoration specialists
delivering time honoured skills
with energy and enthusiasm
across the Cotswolds

Architectural Stonemasonry
Restoration, Conservation & New Build
Dry Stone Walling
Landscaping

www.bidmeadstone.co.uk

M. 07800 560448 T. 01453 882648

Church Services in Avening & Cherington in July

Date	Time	Church	Service Details
5th July	09.30	Cherington	Holy Communion (CW)
	11.00	Avening	Holy Communion (CW)
12th July	9.30	Cherington	Holy Communion (CW)
	11.00	Avening	Holy Communion (CW)
19th July	9.30	Cherington	Holy Communion (CW)
	11.00	Avening	Holy Communion (CW)
26th July Cherington Show	9.30	Cherington	No Service
	11.00	Avening	Holy Communion (CW) and Baptism
2nd August	9.30	Cherington	Holy Communion (CW)
	11.00	Avening	Holy Communion (CW)

COFFEE WILL BE SERVED IN AVENING CHURCH AFTER THE SERVICE ON THE FIRST & FOURTH SUNDAY OF EACH MONTH

Everyone is welcome to the family praise service in Avening Church. This is normally held on the fourth Sunday of each month and is designed to be a family friendly non Communion service lasting about 45 minutes followed by tea, coffee, soft drinks and, of course, biscuits, giving a chance to meet together and still get away from church soon after 12 noon.

SUITABLE FOR ALL AGES COME AND JOIN OUR FAMILY

Please note that there will be no family praise service in July

Dates For Your Diary

Wednesday 8th July	Film Club: Second Best Marigold Hotel	Social Club	7.30pm
Saturday 11th July	Avening School Fete	Around school and gardens	12-2.30pm
Sunday 12th July	Music and Picnic	Longmans Barn	12 Noon
Wednesday 15th July	Playgroup AGM	Playgroup	7.30pm
Friday 17th July	End of term	Avening School	
Sunday 26th July	Cherington Show	Around the village	From 2.00pm
Saturday 1st August	Deadline for Applications for Education Fund		
Thursday 13th August	WI Outing to Hampton Court Castle	Meet at Avening School	9am
Thursday 3rd September	Back to school	Avening School	



Church Floodlighting

30th May

**In memory of Jim Sayers
from Colin, Caroline and Simon.**

*The Church looks lovely **when it** is lit up at night.
If you would like to have this in memory of a loved one, or to celebrate a special event, contact **Paul Brown 01453 835 983***

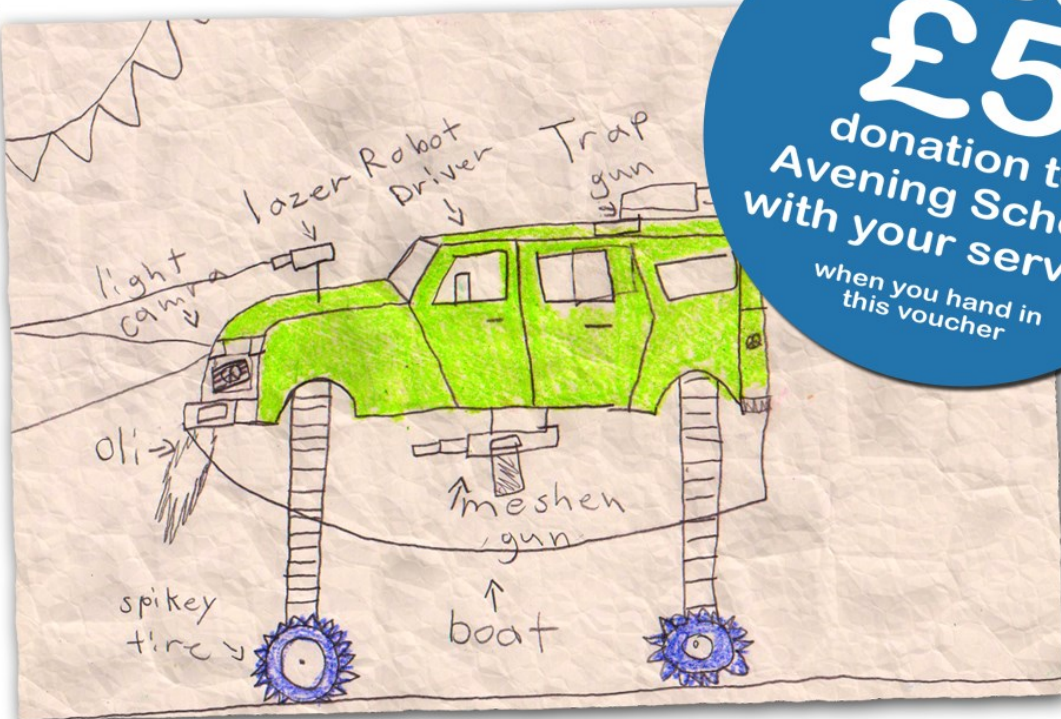
The cost is £5.00 for 2 hours

£20 OFF Your Next Service

Just hand this voucher to one of our friendly team members

- ✓ All Makes and models
- ✓ Dealer level diagnostics and servicing
- ✓ Free no obligation estimates
- ✓ local free pick-ups

**PLUS
£5**
donation to
Avening School
with your service
when you hand in
this voucher



for free, friendly, local advice give us a call

01453 832871

info@service-tech.org.uk
www.service-tech.org.uk



Inchbrook Trading Estate, (A46) Bath Road, Nailsworth, Stroud, GL5 5EY

The Bell at Avening

a traditional British pub serving a great selection of real ales and food



Food served from Tuesday evening
to Sunday lunchtime

OPENING TIMES:
MON - FRI: 5:30PM - CLOSE
SAT & SUN: ALL DAY FROM 12 NOON

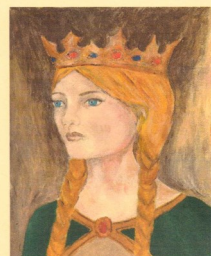
LIVE MUSIC EVERY MONTH
LAST MONDAY OF EVERY MONTH IS
JAMMING NIGHT

FOR LATEST INFO, VISIT OUR WEBSITE AT
WWW.THEBELLAVENING.CO.UK
OR LIKE US ON FACEBOOK

Call us on: **01453 836422** or e-mail us at info@agpubs.co.uk

www.thebellavening.co.uk

Find us on Facebook
by simply searching
"Bell at Avening"



Queen Matilda

Real Ale Real Food Real Fires

Open Tuesday to Sunday

Graham's Quiz night the last Thursday every month

Live music 11th & 25 July - please see website for details

Tuesday nights 2 for 1 PIZZA night Stonebaked Pizzas cooked to order

Star Lane, Avening, Glos, GL8 8NT

Telephone 01453 350305 Website: queenmatildatavern.co.uk

Email: trulockes@hotmail.co.uk