

The Villager

A Magazine for Avening, Cherington and Nags Head

December 2014/January 2015

50p

Bumper Christmas & New Year Edition



Merry Christmas and a Happy New Year !

editors@acvillager.co.uk

THE WEIGHBRIDGE INN

The home of the famous '2in1' pie

Full menu served all day every day



Opening Times:

Mon to Sat - Midday

to 11.00pm

Sun – Midday to

10.30pm

Longfords

Minchinhampton

GL6 9AL

Tel: **01453 832520**

'bake at home' 2in1 pies

available to collect now!



Who's Who in the Parishes

PARISH PRIEST	Rev. Peter Quinnell	01453 833251 quinnell708@btinternet.com
----------------------	---------------------	--

READER	Derrick Pierce	01453 835090
---------------	----------------	--------------

AVENING

Churchwardens	Stephanie Hamilton	01453 834910
----------------------	--------------------	--------------

	Stephen Uzzell	07807 700004
--	----------------	--------------

PCC Secretary	Lynne Mowles	07909 870544
----------------------	--------------	--------------

PCC Treasurer	Peter Best	01453 835287
----------------------	------------	--------------

Organist	Colin Chambers	01666 880026
-----------------	----------------	--------------

Flower Team	Gill Adams	01453 833175
--------------------	------------	--------------

	Doreen Pierce	01453 835090
--	---------------	--------------

CHERINGTON

Churchwardens	Roger Gegg	01453 834805
----------------------	------------	--------------

	John Bate-Williams	01666 503544
--	--------------------	--------------

Sacristan	Beryl Milsom	01285 841248
------------------	--------------	--------------

PCC Secretary	Elizabeth Workman	01285 841294
----------------------	-------------------	--------------

PCC Treasurer	Paul Cable	cabes50@yahoo.co.uk
----------------------	------------	---------------------

Organist	Elizabeth Workman	01285 841294
-----------------	-------------------	--------------

	Beryl Milsom	01285 841248
--	--------------	--------------

Flower Team	Elizabeth Workman	01285 841294
--------------------	-------------------	--------------

Visit Avening church web site at :- www.aveningchurch.info

The Villager Magazine

Editors	editors@acvillager.co.uk Jane Archer, Frances Conway and Derrick Pierce 07812 137161 (Jane) 01453 832177 (Frances) 01453 835090 (Derrick)
----------------	--

Advertising	editors@acvillager.co.uk Wendy Jennings 01453 832881
--------------------	---

Deliveries	01453 834834 Cas Boddam-Whetham
-------------------	------------------------------------

Deadline	20th of each month
-----------------	---------------------------

Parish Letter

Dear Friends

When I was a schoolboy I was encouraged to take an interest in collecting postage stamps and continued collecting the commemorative British stamps until the late 1960's. Each year I would look forward to the special Christmas issues - sometimes children's art or traditional religious ones depicting the Christmas story recorded in the Gospels. There were a few years when the Post Office only issued 'secular' stamps which prompted many people to campaign for the images of the Christ Child, the visitation of the shepherds, or the Magi. Hence for a time we had a choice of either religious or secular stamps. Again we have choice this year: a set of seven stamps 'Celebrating Family Life'; or the Byzantine icon of the 'Madonna and Child'; and a set that was issued earlier this year commemorating the 1914 'Christmas Truce'.

It is fitting that the Christmas Truce is observed in many ways as possible. It was an unofficial ceasefire that took place on the Western Front near Ypres by approximately 100,000 British and German soldiers starting on Christmas Eve and continued for almost forty eight hours. In some areas the fighting continued through the whole of the Christmas season, with a brief ceasefire so that the injured soldiers and the dead bodies on both sides could be recovered. History is vague in recording which side initiated the truce: some German soldiers put up a few decorations; a few British soldiers lit candles and placed them where they could be seen by the enemy. As tensions eased, the strains of carols being sung on both sides could be heard, and soon many soldiers on both sides scrambled out of their trenches and met in 'No Man's Land' where they exchanged gifts of food, tobacco and souvenirs. They also worked together in ensuring that the dead bodies were recovered and buried in a dignified manner. Some of the more athletic played a game of football finishing with a chorus of Auld lang syne! There was a similar truce in 1915, but alas, not in following years when ferocious battles, such as at the Somme, dispelled the will for further truces.

This will be my first Christmas in Avening and Cherington and I look forward to celebrating with you, in our church, your home, our school, the local pubs – wherever you gather to celebrate God's gift to the world, His Son, our Saviour Jesus Christ. The singing of carols brings families together, brings friends together: in the dark days of 1914 it brought enemies together, albeit for just a few hours. Later this month the Peace Collective will be releasing a CD first recorded by a Liverpool Band, The Farm, who were inspired by the Christmas Truce to produce the song, 'All Together Now'. The chorus is a reminder to everyone of the world's aching need for the universal peace brought by the Christ Child.....

All together now, All together now, All together now, In no man's land together.

I wish you a Holy and Peaceful Christmas

Peter (The parish priest for Avening and Cherington)

Bumper Christmas All Avening and Cherington Villager

It's hard to believe it's that time again, but this Villager Magazine is the bumper edition which, thanks to the generosity of the Avening Parish Council is delivered free to every house in Avening, Cherington and Nag's Head. If you want an extra copy, it is available for the usual price of 50 pence from the pubs and the churches.

And in February (*N.B. no edition in January*) next year, we will be introducing the new look Villager Magazine, also to be delivered free to every household, thanks to grants from Avening and Cherington parish and parochial councils.

If you want to send us new, views or comments; photos or poems; travelogues or stories - we are always to be found at editors@acvillager.co.uk and we'd love to hear from you!

IF YOU ARE ABLE TO HELP DELIVER THE VILLAGER IN YOUR NEIGHBOURHOOD WHEN IT GOES THROUGH EVERY DOOR FROM NEXT MONTH PLEASE CONTACT CAS ON

01453 834834

Merry Christmas from the Villager Editors!

Photographs in The Villager Magazine

Many thanks to **Lorna Walsh, Year 5, Avening Primary School** for our cover photo. If you have a photo of Avening or Cherington which you would like to share with us, please feel free to send it to us. You never know, it might turn up on the front cover...!

editors@acvillager.co.uk

Services in Avening & Cherington December & January

Day/Date/	Time	Church	Service Details
Sunday 7th December	08.00	Avening	Holy Communion BCP
	09.30	Cherington	Holy Communion BCW
	11.00	Avening	Holy Communion BCW
Sunday 14th December	08.00	Avening	Holy Communion BCP
	09.30	Cherington	Matins BCP
	11.00	Avening	Holy Communion BCW
Sunday 21st December	08.00	Avening	Holy Communion BCP
	5.00pm	Cherington	Carol Service followed by re- freshments in the hall
	7pm	Avening	Lessons and carols by candlelight
CHRISTMAS EVE	4 pm	Avening	Crib Service
	10.00pm	Cherington	Holy Communion BCW
	11.30pm	Avening	Midnight Communion BCW
CHRISTMAS DAY	10.00	Cherington	Family Service
	11.00	Avening	Holy Communion BCW
Sunday 28th December	08.00	Avening	Holy Communion BCP
	10.30	St. Mary's TETBURY	United benefices Holy Communion

Services in Avening & Cherington December & January

Day/Date/	Time	Church	Service Details
Sunday 4th January	08.00	Avening	Holy Communion BCP
	09.30	Cherington	Holy Communion BCW
	11.00	Avening	Holy Communion BCW
Sunday 11th January	08.00	Avening	Holy Communion BCP
	09.30	Cherington	Holy Communion BCW
	11.00	Avening	Holy Communion BCW
Sunday 18th January	08.00	Avening	Holy Communion BCP
	9.30	Cherington	Matins BCP
	11.00	Avening	Holy Communion BCW
Sunday 25th January	08.00	Avening	Holy Communion BCP
	09.30	Cherington	Holy Communion BCP
	11.00	Avening	Holy Communion BCW
Thur 29th Jan.	7.00pm	AVENING	Compline BCP
Sunday 1st February	8.00	Avening	Holy Communion BCP
	9.30	Cherington	Holy Communion BCW
	11.00	Avening	Holy Communion BCW

**All requests for additional services (Weddings, Baptisms etc.) should
be made to Rev. Peter Quinnell
or, if he is not available, the Church Wardens
Their contact details are on page 3**

Church Duties in Evening



Date	Sides persons	Chalice	Sacristan
Dec 7 th	Margaret/Cas	Derrick	Ann
Dec 14 th	George/Irene	Paul	Elizabeth
Dec 21 st	Stephanie/Piers	----	Ann
Dec 24 th	George/Cas	Derrick	Ann
Dec 25 th	Stephanie/Irene	Stephen	Elizabeth
Dec 28 th	BENEFICE SERVICE		
Jan 4 th	Ann/Margaret	Derrick	Elizabeth
Jan 11 th	Stephanie/Jeanie	Stephen	Ann
Jan 18 th	Piers/George	Paul	Elizabeth
Jan 25 th	Cas/Irene	Hamish	Ann
Feb 1 st	Stephanie/Margaret	Derrick	Elizabeth

**THERE WILL BE COFFEE AFTER THE SERVICE IN AVENING ON
January 4th and February 1st**



Church Floodlighting

This month the church will be floodlit to remember especially **Eric Roberts** on his birthday: 22nd December

With love from Lynne and the family

If you would like to have the church floodlit in memory of a loved one, or to celebrate a special event, contact

Paul Brown on: 01453 835 983

The cost is £5.00 for 2 hours

What's On In Avening and Cherington

Please let us know if we have forgotten any regular event or if there is something you would like to have included here.

Event	Day	Time	Where	Contact
Line Dancing	Monday	7.30 - 10.00pm	Social Club	Mel 01453 833760
Cherington PC	4th Tuesday Bi-monthly	6.30pm	Village Hall	Frances 01453767384
Book Club	1st Monday each month	7.30pm	The Bell	Kristiane 01453 836515
Youth Club	Tuesday	6.15 - 7.45pm	Memorial Hall	Cassie 01453 834182
Bell Ringing	Tuesday	7.30pm - 9.00pm	Church Bell Tower	David 01453 882914
Line Dancing	Tuesday	7.45 - 10.30pm	Social Club	Mel 01453 833760
Yoga	Wednesday	7.30pm - 9.00pm	Memorial Hall	Elles 0781 555 2952
Over 60s Lunch Club	1st Wednesday each month	12.30pm	Social Club	Christine 01453 833246
Dial-a-Ride	Thursday	9.30am		Liz Truman 01666 502514
WI	2nd Thursday each month	7.30pm	Memorial Hall	Maisie 01453 834679
Avening PC	3rd Thursday each month	7.30pm	Memorial Hall	Caroline 01285 380041
Avening Angels Choir	Sunday	4-30pm	Various	Derrick 01453 835090

AVENING CHURCH CRIB SERVICE



Come and join the shepherds and angels as we prepare for Christmas day by re-telling their story at the crib by word, action and singing

The service is at 4-00pm on Christmas Eve 24th December



Start your Christmas with us, the shepherds and the angels



**OUR NEW DEFIBRILLATOR
IS NOW IN THE
TELEPHONE KIOSK ON
HIGH STREET**

**COME AND FIND
OUT HOW TO USE IT
AND SAVE LIVES**

**AVENING
MEMORIAL HALL**

**MONDAY, 1 DECEMBER 2014
7pm for 7.30 pm**

**For more information contact:
John Collinson, Projects Manager
projects@avening-pc.gov.uk
01453 882532**

CHERINGTON CHRISTMAS TREE LIGHTING

SATURDAY 6TH DECEMBER 17.45

**ON THE VILLAGE GREEN
WITH CAROLS**



**FOLLOWED BY
DRINKS MINCE PIES
IN THE VILLAGE HALL**

**There is also a Christingle Service for Children
and Families in the Church at 5 pm**

All Welcome



Calling All Past Avening School Pupils and Families

Help make Avening School's new library fantastic

Avening School is hoping to fill the newly-fitted wooden shelves with new, interesting and exciting books, both fiction and non-fiction - to provide the children with a wealth of reading choice as well as resources for their class topic work. In order to do this the school has set up a 'sponsor-a-book' initiative which enables families and friends, past pupils from the school and members of the local community to purchase a book for the library. Each book will contain a bookplate with the name of the child/person who has sponsored the book, making that person a permanent part of the school library and helping to fill the shelves with a wide range of different and engaging books.

If you are interested in sponsoring a book for Avening School Library please contact Alison Sollis in the school office for more information or enquire in the Tetbury branch of The Yellow Lighted Bookshop for more details.

Thank you to everyone who has already sponsored a book

MR JINGLES AT THE QUEEN MATILDA



My name is Jingles and I have recently come to live at Avening at the Queen Matilda with my family. I am a cat of distinguished appearance and lineage, as you can see from my picture. Lynne and Matt have decided to run the pub on my behalf and I make it my business to welcome everyone who comes in for a pint or some excellent food, prepared by Matt.

Recently we had a visitor from the Villager, who was eager to know what our plans are for the future and also to hear about what Lynne and Matt had done before they came to Avening. She had the sense to take my photo first and then I left her for a bit of a chat with Lynne and Matt. I agreed that she should be allowed to write what follows in her own words.

Lynne and Matt met over twenty years ago in London in a bar in Soho, where Matt worked. At the time, Lynne was working as a legal secretary. Eventually they married and from then on their lives have been centred on the hospitality world, first running their own night club/bar in Soho, and then running the Funkey Monkey in Camberwell.

Here Matt dreamed of starting a family festival. His efforts to attract funding included approaching the Arts Council, beer companies and appealing via Radio London. Eventually, his efforts paid off and his dream became a reality, as an Arts and Music Festival. In its third year the Mayor of Peckham asked if the borough could help. Attendance had risen to several thousand.

Once Lynne and Matt's children, Max and Isabel, came along they felt that it was time to leave London and head for the country. They arrived in Dorset and ran the Potters Café and Bistro for twelve years. Then it was off, undertaking 'trouble shooting' assignments, around the area.

Finally they came to Avening. Since they arrived they have completely revamped the pub, opening it up and extending, so that the whole place feels bigger, lighter and warmer. They do not see themselves as a 'gastro pub' but want to offer good straightforward meals that won't break the family budget. One of the best things about this new venture is that Lynne and Matt were able to buy the pub outright. So, for those who know their beer, this is very good news, as it means that they can offer a much greater variety of beers than is

possible in a brewery owned pub.

They hope that the Queen Matilda will play an important part in village life. Matt and Lynne plan to have quizzes and live music and intend to use their garden to raise chickens, geese and perhaps even a pig. They also hope to run bed and breakfast at the Queen Matilda.



All in all, the future looks bright for this enthusiastic, warm couple, whom I greatly enjoyed meeting. We also welcome Isabel and Max. Isabel is at Stroud College studying Art and Design and Max is well on his way to realising his ambition of joining the RAF.

I need hardly say how grateful I am to Mr Jingles for allowing me some time with Lynne and Matt.

Frances Conway

THE ANNUAL CHURCH CHILDREN'S CHRISTMAS PARTY

ON 7th DECEMBER from 3-00 to 5-00pm.

IN HOLY CROSS CHURCH AVENING

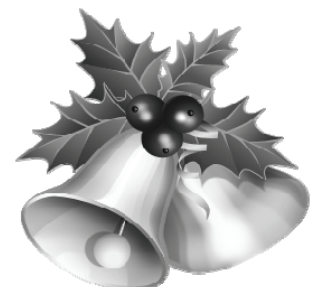
All village children aged up to 11 years are invited

**We are expecting a visit from Father Christmas
And have booked an entertainer as last year.**

**If your children would like to come please email names and ages to
Derrick.pierce@hotmail.com (please put PARTY in the subject
line) we can then make sure
that Father Christmas brings a
gift for each child.**



**Please bring a plate of food to
share**





Avening Primary School

Christmas is Coming.....

.....and the staff and children at Avening Primary School are busy planning and rehearsing for their much anticipated Christmas productions which are now only weeks away. This year, the infant children will be delighting their audiences with an interesting take on the Christmas story. In 'A Christmas Recipe', our head chef will be making sure that there are no ingredients missing from the giant mixing bowl, in order to cook up a wonderful Christmas surprise...including a handful of shepherds, a pinch of starlight, a donkey and a very special baby!

Meanwhile, the key stage 2 children are relishing the challenge of performing their Christmas production this year - 'Olivia' the musical. Our heroine, Olivia, like the famous Dickensian orphan Oliver, starts out in an orphanage but set in Victorian London, this version of the Dickens classic tale includes additional characters such as Eliza Dolittle, Ebenezer Scrooge, George Bernard Shaw, Sherlock Holmes, Dr Watson – as well as well known characters from the original story such as Fagin and the Artful Dodger. With plenty of humour, sentimentality and action, the story is destined to grip our audiences at the end of December and give our older children a chance to shine!



The whole School would like to take this opportunity to thank everyone who has sponsored a book for our new School library. The children were so excited last month when they were able to borrow books to take home and spend time browsing the shelves. Each sponsored book has a bookplate inside with the name (s) of the sponsor(s) and it is such a joy for children to open a book and find a name written

inside it and for parents, former pupils, staff, family members and members of the community to be such an integral part of our growing library is a very special thing and long may it continue. Sponsor-a-book is an ongoing initiative and if you would like to get involved please contact the School office or visit the Tetbury branch of The Yellow Lighted Bookshop for more information.

During last month, we invited an HMI (Her Majesty's Inspector) and a local

authority Advisor to conduct a review of school performance – a ‘mock Ofsted’ – to help us to continue to move the school forward and ensure the very best education for our pupils. They were very thorough in their approach: talking to parents, governors, staff and children; looking at books from every class; observing lessons and behaviour at playtime and lunchtime; hearing children read; assessing information on the school website; checking safeguarding procedures; looking at performance data; and interviewing subject leaders about the impact of their actions. We are delighted to report that they agreed with our self-evaluation of Avening Primary as being a ‘good school’, particularly pleasing at a time of increasingly high expectations from Ofsted and in the curriculum requirements, as well as a time of changes in safeguarding requirements and special educational needs procedures.

As we look back on this year, there have been some very emotional farewells as well as many happy hello’s and it is with great excitement that we look to the year ahead. Avening School would like to wish you all a very Merry Christmas and a Happy New Year. See you in 2015!

Alex Adcock

If you are interested in finding out more about our school please take a regular look at our website (www.avening.gloucs.sch.uk) which is updated often. In particular take a look at the interesting introduction to all our staff – with pictures courtesy of the children!

NAILSWORTH ACCOUNTANCY

ACCOUNTANCY SERVICES FOR SELF EMPLOYED AND LIMITED COMPANIES

Self-Assessment Tax Returns
Accounts Preparation For Small Businesses
Company Accounts
Business Start Ups & Company Formations
VAT Returns and Tax Planning

For a competitive quote telephone Emma

01453 835050

TOWN HALL NAILSWORTH

A Tribute to Yester-Year's Posties

Sometime in all our lives the Royal Mail and village Post Office has been of great importance to us and despite the overindulgence of 'mobiles, e-mails, texts etc. it has its many uses and still handles quantities of written letters and parcels.

Riley Vincent, who lives in Point Road and at 91 is probably Avening's oldest resident, was born in the High Street and has lived most of his life in the village. He tells us about the evolution of the work and role of the 'Postie' in his lifetime.

Examination of the village census shows a Mr. Mark Cox was employed as a 'letter carrier' in 1841. By 1851 he had risen to post master in what is now the High Street. Regular changes of Post Office venues followed until 1901, when a purpose built Post Office and Grocery Store as established at the beginning of what is now Point Road. This was owned and operated by the Fowles family (the dominant family in the village), with Esther as Post Mistress. She was joined later by her niece Bessie as clerk, eventually taking over as Post Mistress in the late 30s or early 40s, and was joined by Mrs. Margaret Mann to assist with the increasing workload, due partly to the war years and forces stationed in various parts of the world, all of whom had mail to be delivered to loving families.

Avening parish was quite a large one and has changed very little over the decades. For the purposes of delivery, the Post Office split the parish into three areas. Route 1 was High Street, Point Road, Bell Cottages, Woodstock, West End, Brandhouse Farm, Copse House across two fields to Longman's Farm, thence to Nailsworth Road and then deliveries to Woodhouse Farm and Cottage, before returning to the Post Office having picked up mail for onward delivery to the far flung houses on the round.

Route 2 included Tetbury Hill, the upper part of the High Street and Cross area, Star Lane to Star Farm, Ridges Lane to Rugges Farm, then London Lane to Longtree Cottages, Forty Acres and Lodge and back to the Post Office. Mail was distributed by middle-aged ladies, each route being approximately four miles long.

Route 3, probably the longest and largest route, concerned myself! The person employed for the route required a stand-in for his holidays, so as I was stationed at RAF Aston Down I was able to arrange my leave entitlement to coincide with his holiday - of course, having just married, any extra cash was welcome.

This route demanded a 5.30am attendance at the Post Office for the arrival



The old post office at the bottom of Point Road

of the post van from Stroud at 5.45 am, whereupon I would sort the mail into the various streets. I should add that a bicycle was provided for this round. It was a brute of a thing, with carriers back and front, and was very heavy, even before loading it with letters and parcels.

The round started at the Police Station near the Cross and took in Mays Lane, Old Hill and the 12 council houses, thence to Hill Farm. I had to push the bike most of the way, and it was very pleasant to be able to ride down Hampton Hill and into Nags Head, delivering en-route. It was then on to Westrip Farm (thus avoiding the long pull up Rest Hill) to deliver to Cherington, including the official mail to Cherington Post Office. Cherington complete, it was down the hill, and up the hill to Aston Farm and the farm cottages and the cottages at Dunkerage Pool (demobilised later because of their dangerous position relative to aircraft taking off and landing at Aston Down).

To avoid having to return to Cherington, I used to cycle across two fields from Aston to Black Cover Copse, deliver to the Air Ministry houses there, and on to the hamlet of Lowesmoor. Deliveries now complete, it was back to Cherington to empty the post box at 10.15 am (and not a minute before!) and then repeat the same operation at Nags Head, to reach Avening Post Office by 10.30 for the letters to be franked by the Post Mistress, before collection by the post van for onward worldwide distribution.

Morning delivery over, it was a repeat at 14.00 hours for afternoon delivery; although there was very little mail, the same distance had to be covered. On to Cherington to collect the mail from the post box at 17.00 prompt, and again at Nags Head, to be at Avening for franking at 17.30, by which time I was glad to put the bike away for a few hours!

And I would remind you that this was a six day week, including Christmas Day - the only exception was if Christmas Day fell on a Sunday!

Riley Vincent

Chris Naish



Many of you will remember Chris Naish, the greatest 'quizzier' Avening has boasted for many a year, stalwart of the Village Shop and the WI as well as the village quiz teams, who sadly passed away in November. Her granddaughter Ellie Stoker (pictured above with her grandparents) wrote this poem about her, and read it at her funeral.

Dear Nanny,

The ultimate quiz champion,
The beacon of knowledge.
Whether on her team or against her,
you were always a spare part,
She knew every answer from Rihanna
to ancient history,
There was simply no chance.

As a teammate, you lay dormant
wondering if she'd ever falter,
Knowledge of distant King's relatives
first removed,
Not even as a scribe could I make my
marker.

Off to Turkey I went and Nanny's
sound advice
Stay away from Syria
And don't find a waiter boyfriend
Cheers Nanny for considering these a
likely vice.

Never someone to take herself
seriously,
Particularly after a gin or two.
We welcome 'drunk nan' so hilariously
on YouTube.
Apologies for my dodgy camera work
I was taken aback,
By your brilliant rendition,
And your rapping knack.

The universal groan when you started
a political rant,
We love you dearly
But you did like a good old chant.

Stubborn to the end,
Generous and kind,
You were a force to be reckoned with
You'll always be on my mind.

Chris's family plan to organise a quiz to raise money for Cotswold Care Hospice in her memory - keep an eye out for further information

Avening Playgroup



The committee has been working so hard on our biggest fundraiser of the year. We hope everyone enjoyed the visit to the Christmas Bazaar from Frozen's Elsa and Santa. A big thanks to Elsa, Santa, everyone in the village who donated and who helped make our event a success and of course all the businesses who gave so generously to the raffle. We also would like to give a big thank you to the Avening Film Club who kindly made a fantastic donation to the playgroup. Our next event is the Santa float on Sunday December 14 so please ask your little ones to watch out for Santa in the village.

Since the half term break we have been really happy to welcome three new children and their families to the playgroup. We hope they have enjoyed themselves so far. On Friday 14th November the children and staff donned their capes to become superheroes and super princesses to raise money for 'Children in Need'. Thank you to everyone for taking part and donating.

This term we have been working on pen control, tracing over letters, numbers, shapes and lines. We have also been looking at number and shape recognition. The children have worked really well with amazing results.

We are in the process of planning the last three weeks of term. This is always a fun time with lots of crafty activities making decorations, cards and Christmas models and pictures. We will be practising a few Christmas songs to sing to parents on the last day of term after a morning of party games and fun.

A very merry Christmas and a happy New Year from all the children, staff, committee and parents at Avening playgroup.

Jo Rayner

O.L.Cottle Family Business

**Hand Carved Memorials : Cremation Plaques
Additional Inscriptions : Renovations and Cleaning**

All Types of Stonework

Tel: 01453 762877

36 Slad Road, Stroud, Gloucestershire

Down To Earth



ampelopsis

'Off with his head!' has got to be the command when newly rooted cuttings produce a flower. I currently have rows of such cuttings on greenhouse staging and these mild conditions are an inducement to flower production. Last year I was delighted when a newly rooted *clematis armandii* (the evergreen clematis) unfurled a cluster of fragrant, almost exotic blooms. Alas, it was too much, too young. The effort exhausted the young plant, which

should have been putting all its energies into growing roots and establishing its structure; it slowly ceased to be. So, nip those premature flowers in the bud.

This is the time for cleansing (disinfecting, if you like) the greenhouse, while the weather is mild enough for plants to be stood temporarily outside. If you cannot finish the job in a day and a cold night is forecast, throw a piece of fleece or bubblewrap over them, as long as the earth in the pots is fairly dry. Once all back inside, remember that ventilation is more important than warmth.

I am sure I am not the only gardener to be affected by selective amnesia when I am in a nursery (or, occasionally, garden centre). I forget that I no longer have a walled garden. Here, I have a veritable dearth of walls. So, when I arrive home with yet another climber, my ingenuity is sorely tested. My latest purchase was an *ampelopsis glandulosa* var. *brevipedunculata*, a plant whose charm more than surpasses the number of syllables in its name. It is in a sheltered spot, but in a pot, where the roots will be most vulnerable to any plunge in temperature, so I shall be listening to the forecasts and ready with the bubblewrap.

I love being in the garden in November: more leaves join the air-borne dance with every fresh gust of wind; a charm of goldfinches swoops across the garden, rising and falling as one; the rasping cries of the rooks is echoed by the raucous barking of dogs across the valley. Mid-winter tasks require little finesse; they are the strenuous, energetic jobs that set up an appetite for the pumpkin soup that derives from your earlier labours, with pumpkin, potatoes, carrots, tomatoes and bay leaves all plucked previously from your patch. Not

to forget the topping of roasted seeds, which do, however, require imported olive oil and sea salt.

In the evening, though, my head is in another country, as I enter the world of 'The Chinese Garden' by Maggie Keswick. To western eyes, the gardens appear crammed with pavilions, porches and open galleries, often beside water with courtyards leading off. The author writes:



Chinese garden with pavilion, rocks and water

Libraries and study rooms are an integral part of nearly all Chinese gardens. Their owners' time was often spent writing poetry and practising calligraphy, often in the company of friends ...

Inspired by the jutting and craggy mountains of their natural landscape, the Chinese collected and arranged bulbous and contorted rocks. White-washed or grey walls, topped with roof tiles, served as a backdrop for shadows and reflections from water or bamboo. They were also punctuated by moon-gate windows, or lattice-work apertures, framing another picture. Another world ...

Closer to home, the path to the entrance of the Sir Harold Hillier garden, which I wrote about earlier, is lined with a tree referred to as a 'living fossil', having been discovered growing beside a temple in China in 1941 and known of previously only from fossil specimens. The *metasequoia glyptostroboides*, or dawn redwood, is a deciduous redwood, closely related to the *taxodium distichum*, or swamp cypress. In autumn the leaves turn a most distinctive salmon pink. There are fine specimens in the Cambridge Botanic garden, also at Westonbirt – and if you walk back downhill towards the village from West End, you might just spot not one but two, to the left and to the right, in private gardens. Oh, yes. Avening has everything!



Leaves of the dawn redwood

Marilyn Jones



SUPPORT WORKERS/ RELIEF SUPPORT WORKERS AVENING & FROCESTER

Could you support adults with learning disabilities? If so, we would really like to hear from you.

We are a leading provider of services for adults with learning disabilities and are looking for staff to deliver both personal care and practical support.

These roles involve supporting individuals with various learning disabilities, complex communication needs and behaviours that can be challenging.

Shifts include evenings, weekends and some sleeping nights.

A current driving licence is needed. Experience is preferred but not essential as we offer excellent training and competitive pay rates.

We are also looking to recruit Relief Support Workers – working hours as needed that fit in with life's other commitments, this is an ideal way of discovering if this is the career for you.

Interested? For more information, please call us on 01453 832201 or email recruitment.glos@hft.org.uk

To find out more about Hft, visit our website

www.hft.org.uk

Poppy Appeal 2014

This year's Poppy Appeal raised £1,035.42.

Once again we would like to say a big thank you to John Green for his help in getting the poppy boxes to the right places and to all our collectors and collection points. Without your commitment, we would not be able to raise what we do each year.

However, on a sadder note, the wreath sale was very disappointing this year. Only eight wreaths were sold and, as all those who attended the Service of Remembrance will know, many more wreaths than eight were laid after the service. Every wreath which is laid, possibly recycled from previous years, which is not bought and paid for in the current year, represents a loss of revenue to the hard-pressed Legion. They need every penny to help the many ex-service personnel, who look to them for vital help.

So please think about this and if you would like to help again next year, may we remind you that wreaths must be ordered in September. Again many thanks to all those who did buy wreaths and supported the Appeal in all the ways mentioned above.

Bob and Kim Pittam

Brookes Hair & Beauty



Unisex Salon
Free Consultation

All aspects of Hairdressing
Appointments not always necessary

Matrix Stockist – retail products for sale
Gift Vouchers available

10 High Street
Minchinhampton

(01453) 883076

Open
Tuesday-Saturday

What's On in Avening and Cherington this Christmas?



Wednesday 3rd December
Over 60s Christmas Lunch
Phone Chris (01453 833246)
for details



Saturday 6th December
Christingle service followed by
Switching on the Cherington
Christmas Tree lights

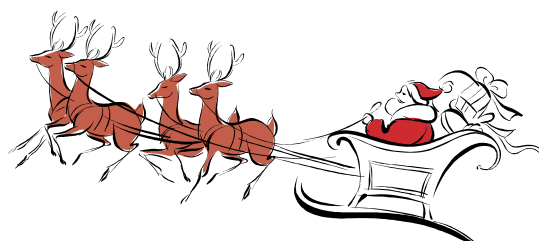


**Sunday 7th
December**
Children's
Christmas Party
Avening Church



**10th, 16th and 17th
December**
Avening School
Christmas performances

**Sunday 14h
December**
Santa visits
Avening!





Friday 19th December
Sing carols with Avening
Angels in the Bell and the
Queen Matilda



Sunday 21st December
Services of Nine Lessons
and Carols in Avening and
Cherington



**Wednesday 24th
December**

Crib Service
Avening Church



**24th and 25th
December**



**Celebrate Christmas in Avening and Cherington
Churches**

A Note from the Local Village Agent

It is said that Christmas comes but once a year but the last one seems less than 11 months ago to me! How time flies. It is therefore very appropriate to wish you the Seasons Greetings and a Happy New Year.

During the past 3 years I may have met some of you but look forward to meeting more people in Avening and surrounding areas.

My job is to provide older or disadvantaged people with easier access to information and services. This service is free and confidential. If you are over 50 years of age or you know someone that is, I can help with many issues. Below I have listed just a few.

- Are you receiving all of the **pensions and benefits** you are entitled to?
- Would you like a **free home safety check** from Gloucestershire Fire Service?
- Would you like to know more about **adaptations to your home**, which may help you cope better with disability?
- Are you feeling **lonely** and would like to meet other people?
- Would you like to **help other people** by volunteering for a local organisation?

I can visit you at home or talk with you on the telephone, the number is 07810-630156. I work 15 hours a week, usually between Monday and Wednesday, so if I am not available when you ring, please leave a message giving your name and telephone number and I will call you back as soon as possible

I also try to go to most of the Avening monthly Lunch Clubs at the Social Club which I can thoroughly recommend! as well as having a 'surgery' at Tetbury

Volunteer office twice a month and once a month at the Trap House (Council office), Minchinhampton, as well as the Arkell Centre, Forest Green, Nailsworth, the 4th Wednesday of each month between 2.30 p.m. and 4.00 p.m.

IT Support & Consultancy

Business, Mobile and Home Computing

Trusted, expert support to help you get the best from your Windows and Apple Mac based IT.



Call or Email us Today:

(01666) 840244
paul@trapnelltechnicalsolutions.co.uk
www.trapnelltechnicalsolutions.co.uk



Aileen Bendall
Village Agent for Avening and surrounding areas.

Cas Boddam-Whetham. MCSP RCT
Chartered Physiotherapist
Craniosacral Therapist

21 Nags Head Lane, Avening, Glos GL8 8NZ

01453 834 834

Web page—www.casbw.co.uk

Member of the Organisation of Chartered Physiotherapists
in Private Practice

Registered with the Health Profession Council
and all major medical insurance companies

For treatment, advice or a friendly chat about your problem.

DON'T FORGET

AVENING SOCIAL CLUB!

WE HAVE TWO FUNCTION ROOMS AVAILABLE FOR YOUR
PARTIES OR MEETINGS (AT COMPETITIVE PRICES)

REGULAR ACTIVITIES INCLUDE

Line Dancing Monday & Tuesday evenings 7.30 to 10.00

Pool league Tuesday evenings

Men's and ladies skittles teams

DON'T MISS OUT ON THE RURAL CINEMA

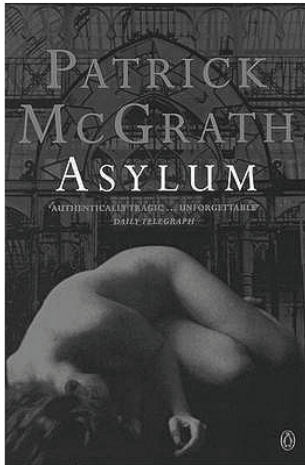
Next film on **Wednesday 17th December**, admission only £4-00

More details tel. the club after 7.30pm

01453 833760



Evening Book Club



Asylum by Patrick McGrath

The book club was vastly divided on this book and while this scenario is unusual it does make for very interesting discussion. For me, there were several problems with the book. I think ultimately the story wasn't at all convincing. Stella, who is at the centre of the story and with whom we are invited to sympathise, is selfish and self-obsessed. We are to believe however, her unconvincing and bizarre behaviour is due to boredom and later profound depression.

I also found Stella's affair with Edgar unbelievable. Edgar would need some sort of convincing personality traits to inspire the type of obsession he inspires in Stella. What exactly Stella sees in him is never clear. I felt that McGrath was trying to create a *Madam Bovary* or *Anna Karenina* but if this was his ambition, I don't think that he succeeded at all. Stella is completely defined from beginning to end by the men in her life (she seems to be completely lacking in friends and extended family) and seemed to me, insubstantial and one dimensional

Dr. Peter Cleve, the venerated elder psychiatrist in the asylum narrates the story. He is an unreliable author and behaves as though Edgar and Stella are his puppets. He is a deeply disturbing character and I thought probably the most interesting character in the book.

Kristiane Maseyk

Next books -7.30 *The Bell*

Jan 5th 2015—*Eve Green* by Susan Fletcher

Feb 2nd 2015—*Alex Woods Versus the Universe* by Gavin Extence

Mar 2nd 2015—TBA -Margaret Foster

April 6th 2015- *The Beginners Guide to Goodbye* by Anne Tyler

May 4th 2015—*The Messenger* by Markus Zusak

June 1st 2015—TBA C.J Sansom

For more information:

Kristiane Maseyk

01453 836515

kristianamaseyk@hotmail.com



Bidmead & Co. are an accomplished team of natural stone construction and restoration specialists delivering time honoured skills with energy and enthusiasm across the Cotswolds

Architectural Stonemasonry
Restoration, Conservation & New Build
Dry Stone Walling
Landscaping

www.bidmeadstone.co.uk

M. 07800 560448 T. 01453 882648

DOLPHIN WATER SOFTENER and SALT SUPPLIES

Alderton, 4 Priory Park Priory Industrial Estate
London Rd, Tetbury, Glos, GL8 8HW

If you would like to improve the quality of your water supply
contact us for a free information pack

by telephone on 01666 500065

or e-mail: info@dolphinwatersofteners.co.uk

We can also supply the following at competitive prices:

- ◆ Tablet and Granular Salt £8.75 per 25 Kg bag
- ◆ Kinetico and Harvey's Block Salt £5.00 per 2x4kg blocks

Available for collection from

1.00 pm – 5.00 pm Monday to Friday

Also between 10.00am and 12.00 noon on Saturdays

Delivery service available within a 10 mile radius of Tetbury

We are coming to a successful end to the year in the Avening W.I. We have had a good range of speakers, activities and outings. We have several new members and an excellent programme of speakers planned for 2015.

As 2015 is the centenary of the founding of the Women's Institute there are many national and regional celebrations planned throughout the year. Gloucestershire is planning to have a baton run in March on the lines of the Olympic Torch when a baton will be carried to and from every village or town with a W.I. The challenge is to come up with novel forms of transport to carry the baton as there certainly are not enough members to run with it!

The fun quiz held at the end of October was a great success as usual. We were delighted that our great quizzier and W.I. member Chris Naish was able to attend and enjoy it despite being so ill. Unfortunately Chris died on 13th November and in her memory we will be sending some of the proceeds from the quiz to the Cotswold Care Hospice which cared for her.

At our November meeting we held our AGM, where Maisie Stanton, who has been our President for the last 3 years, stood down. Under her leadership the W.I. has continued to flourish. Thank you Maisie for your time and commitment. I am taking over her role so I hope I can follow in her footsteps.

Our speaker this month was Cas Boddam–Wetham, our local physiotherapist. Cas gave a lively and entertaining talk and demonstration. She is very concerned that people, both young and old, do not look after their posture often resulting in a stoop in later years. She demonstrated some stretching exercises which she recommended everyone should try each day in order to keep as flexible as possible.

In December we have our County Federation carol concert in Cheltenham with popular guest Aled Jones. We also have our Christmas party and lunch. We hope to welcome even more members in our centenary year.

Gwyneth Simpson

2 Kids' Bikes for Sale in Avening

- Specialized Girls Bike with stabilisers for ages 3/4+, as new, **£50.**
- Islabikes Luath 26 road, cyclo cross, touring, triathlon bike, used, good condition for ages 9+, 24" wheel span with spare set of wheels, drink holder, **£150**

Contact Matthew and Liz Bury 01453 835767 or 01453 835767

Down Memory Lane



This photograph adorned the wall of the Bar in The Cross Inn, prior to its recent renovation. It shows a group of children bathing in what was then the ford at the entrance to Old Hill.

Apparently taken during the late 1940's, this may make good Christmas viewing for a villager or two. Someone in the village must recognise the bathers - let the editors know if you do.

It would be nice to have some names - if the date is correct, then all of them must be in their seventies at least!!.

The Mobile Police Station

Non-emergency phone 101



THE MOBILE POLICE STATION WILL NOT BE VISITING IN DECEMBER AS THE UNIT IS BEING USED FOR CRIME PREVENTION EVENTS

Avening Youth Club

Avening Youth Club meets on Tuesday evenings

Avening Memorial Hall

6.15 to 7.45 pm

COME AND JOIN THE FUN

Numbers have climbed to fourteen since the re-launch of the Youth Club in the Autumn.

There are just two sessions left before the end of the year, with a pizza evening next week and a party planned with fun games on the last session on 9th December.

The Club's first meeting of the new year is on 6th January.

Cassie



**PLUMBING
AND HEATING**

**BOILER SERVICE &
SYSTEM MAINTENANCE**

**FOR OIL BOILER AND AGA/RAYBURN
SERVICE**

Tel: 01666 504911 or 07867 434345

or email:

info@indplumbingandheating.co.uk

OFTEC REG. NO: C4634

**Grant Boilers Accredited Installer
www.indplumbingandheating.co.uk**



TOAD HALL
TRULL FARM
TETBURY
GL8 8SQ



Your own private room for lunches, dinners, drinks, receptions, childrens parties, business meetings, exhibitions, film nights. Large screen and internet.

Kitchen plus smaller room available. Outside or "inhouse" catering. A marquee could be added if required.

**For Bookings and prices please contact :
Fi Mitchell
fimitchell06@btinternet.com
01285 841229 07885 094393**

- Made to measure curtains and blinds
- Choose in the comfort of your own home
- 25 years experience in soft furnishing

Curtains and Blinds

Thinking of updating your curtains or blinds but don't know where to start? We offer a fully individual service including:

- Free measure, advice and guidance on all window treatments
- A large selection of fabric samples to choose from
- Vertical, venetian and roller blinds
- Tracks and poles • Full fitting service




at home

t: 01453 521751 m: 07799 822691 Charfield, Wotton-under-Edge
e: info@athomecurtainsandblinds.co.uk www.athomecurtainsandblinds.co.uk



Avening Cinema Club

The 100-Year-Old Man Who Climbed Out the Window and Disappeared

Wednesday 17th December

Based on the internationally best-selling novel by Jonas Jonasson, the unlikely story of a 100-year-old man who decides it's not too late to start over. For most people it would be the adventure of a lifetime, but Allan Karlsson's unexpected journey is not his first. For a century he's made the world uncertain, and now he is on the loose again.

Genre: Drama, Action and Adventure, Comedy

Directed By: Felix Herngren

Written By: Felix Herngren and Hans Ingemansson

Runtime 1hr. 54 min.



ABJL Home Improvements

**SPECIALIST IN ALL TYPES OF HOME MAINTENANCE
40 years experience**

Roofing

Replacement tiles & ridges

Gutter repairs

Chimney repairs & maintenance

Rubber flat roofing

Walls regrind & repointed

Call JOHN for a FREE quotation and advice

07900 320197 or 07584 781967

Free phone 0800 6965381

Email : abhomeimprovements@aol.co.uk



Brookes Beauty

'With 168 hours in a week, make one of them time for you to relax and enjoy a beauty treatment'



Call 01453 887822

www.brookesbeauty.co.uk

O.P.I. Manicures & Pedicures

Shellac Manicures & Pedicures

Dermalogica Facials & Body Treatments

Eyelash / Brow Tinting & Shaping / Threading

Jane Iredale Mineral Make-up Including Bridal

Waxing, Massage & Fake Bake

Reflexology

www.brookesbeauty.co.uk

Open Monday – Saturday

Gift Vouchers Available

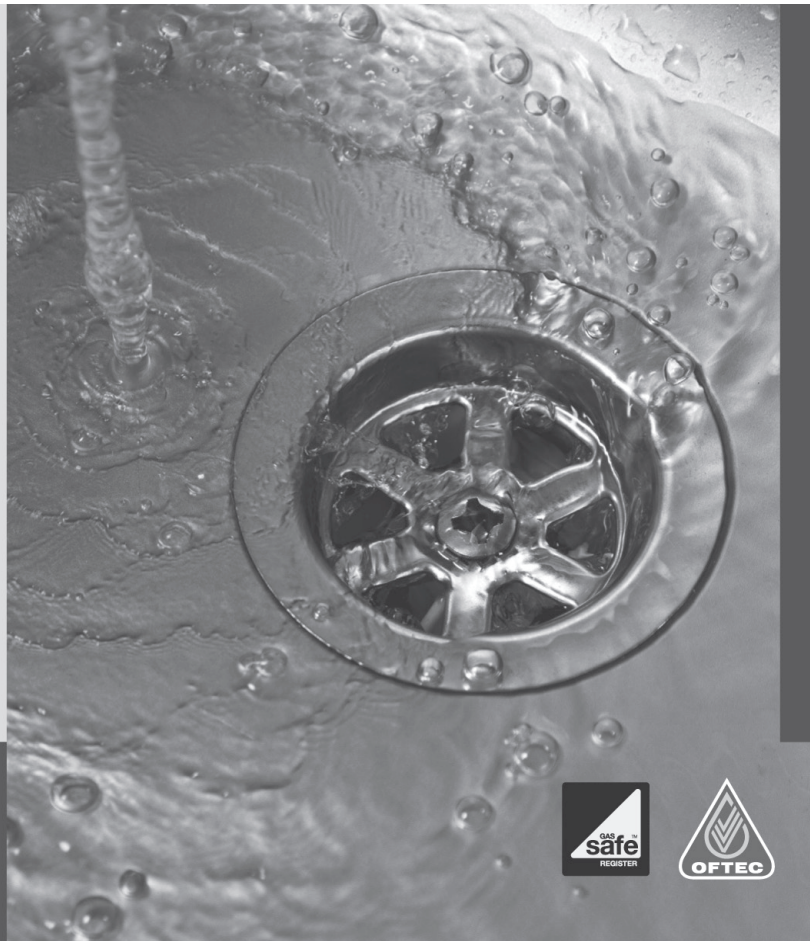
5 High Street, Minchinhampton, Stroud, Gloucestershire, GL6 9BN



**Plumbing
& Heating**
(Cotswold) Ltd

- Oftec and Gas safe registered
- Boiler replacements
- New build and renovations
- Heating updates and alterations
- Underfloor heating
- Bathrooms
- Water softeners
- Over 35 yrs experience
- Tetbury based

Clive Alley t: 07584414624
Scott Wilkins t: 07717750247
e: scott@awplumb.co.uk
www.awplumb.co.uk



Dying without a Will. Now that's a real tragedy.

No-one likes the thought of dying, so it's hardly surprising that almost 3 out of 5 UK adults don't have a valid Will (*source: www.unbiased.co.uk 2010*). Yet having one is one of the most important arrangements you can make during your lifetime.

My name is David Martin. I live in Nailsworth and I'm the local consultant for *Steele Rose & Co* - one of the UK's Premier Professional Home Visit Will Writers. After 22 years serving my country in the RAF, I have spent the last 28 years of my life professionally advising my clients on all personal financial matters and specialising in Wills.

Writing a Will is easier and cheaper than you think. It also ensures that your wishes are carried out simply and efficiently - causing the minimum of anguish for those you leave behind. If you would like to discuss your Will arrangements, redraft an existing Will, Lasting Powers of Attorney, or other associated legal services, at a mutually convenient time in the comfort and privacy of your own home, please contact me:



David Martin

David Martin, local consultant,
Steele Rose & Co
(Nailsworth & surrounding areas)
01453 836699 (M) 07973 405997
Email: dcmartin@hotmail.co.uk
www.steelerose.co.uk
Members of the Society of Will Writers



AVENING COMMUNITY OIL GROUP

Coordinator: Frances Lindley

FIndly4@aol.com 01453 835115

Coordinated group oil deliveries within the Avening and Cherington parishes at the best quote available at the time from reliable oil firms used to delivering in our area.

Main deliveries before and after Christmas, and in late Spring and early Autumn to catch low prices in times of lower demand, with interim deliveries organised to suit those with small tanks or AGAs.

Members with large tanks benefit from choosing to fill when the price is low, and those with small tanks benefit from a good bulk price rather than paying top rates.

(NB: Not designated oil firm so not suitable for a managed top-up account)

Community makes for Economy

SELL YOUR HOUSE FOR LESS

**Introductory
Offer!**

triqs property

BRONZE PACKAGE

only £995 with NO VAT

Advertise your property with us for a one-off upfront payment.

We will provide:

- a **brochure**
- a **FOR SALE board**
- **advertise your property in our window, on our website and on rightmove.co.uk.**

SILVER PACKAGE

0.8% Sale Price with NO VAT

Our SILVER service includes **all** the benefits of the BRONZE package, but includes up to **five** accompanied viewings.



GOLD PACKAGE

0.9% Sale Price with NO VAT

Our GOLD service includes **all** the benefits of the SILVER package, but with a **premium listing on rightmove.co.uk** and **unlimited** accompanied viewings.

We are Tetbury's newest estate agency based in the London Road office of an established quantity surveying practice. Both businesses work closely together providing our clients with a full service for property letting, purchase and development. Totally independent, we will guarantee that we have no tie-in arrangements with any other business.

triqsproperty.co.uk

01666 331614

Diary of a Self-Build

Tony and Mandy Slater are in the process of building a house in Sandford Lease; they tell us about the trials, tribulations and excitement of the process.

How difficult could it be? We have watched the TV programmes; read the books, and done the planning. But even though people have been building houses in pretty much the same way for hundreds of years, the indication so far, is very difficult in deed!

Part 1 – Planning and design

We bought a small building plot in January (that was a protracted process in itself), and proceeded to appoint an architect, and draw up plans to fit both the plot, and our lifestyle. It was a slower process than anticipated (it won't be the last time I make that comment), but we got the plans into CDC for review on target. Other than a 4 week delay in processing our application, this was an unexpectedly straightforward and trouble-free exercise.

In the meantime, we cleared the site of 'industrial strength' brambles (which still keep popping up incessantly), and old ivy covered scrubby trees. We've also been sorting and storing the useable stone to re-build the boundary wall.

Freshly armed with our planning certificate, we were able to proceed with two key elements – get some finance for the build, and formally engage our chosen timber frame company. We have decided upon a highly insulated, highly efficient house, and this particular frame firm provided the full package to achieve our goal of a 'no central heating' house – they even flew us to Belfast to prove to us that their product worked. Deposit paid, and over to the architect to sort the design details.

To be continued....



Fred Stevens Funeral Directors

We give immediate attention - 24 hours

Traditional, alternative
and green funerals arranged

Individual, flexible approach

Well established, family owned and run company

Newmarket Road, Nailsworth,
Gloucestershire GL6 0DQ

telephone 01453 832188

email@fredstevens.co.uk www.fredstevens.co.uk



**S Woodman
Garden Services**



**General Gardening
Grass Cutting ~ Hedge Cutting
Tree Cutting ~ Fruit Tree Pruning
General Ground Clearance**

Good Rates / O.A.P Discount

Please Call: Home: 01453 834744 Mobile: 07814206803

PETER SAVAGE

**FENCING AND GATES SUPPLIED AND FITTED
FIREWOOD – LOGS AND KINDLING
JCB EXCAVATIONS – DRIVES, FOOTINGS, ETC.
SOIL, GRAVEL AND HARDCORE SUPPLIED**

Tel: 01453 833239

Do you have a mole problem?

With over 30 years experience in traditional mole control I can effectively, discreetly and humanely remove the culprit(s)! No gas, chemicals or poisons used and completely safe to children and pets.

No Mole – No Fee!

**07766 132934 (Days) 01285 770968 (Evenings)
www.gbstateservices.com**

Member of the British Traditional Molecatchers Register. Member of the Guild of British Molecatchers
BPCA/RSPH level 2 certificate in pest control. Fully insured and references available

Call now for a free, no obligation site survey and quote.

Carpet and Upholstery Cleaning Specialists

Barden Clean

- Ultra fast drying times
- Environmentally friendly
- Removes stains
- High temp – sterilises carpet
- Improves air quality
- Removes dust mites
- Fully insured

CALL NOW

Michael Denley

**01453 752893
07541 002 891**

www.bardenclean.co.uk

dental
practice

townes
townes
associates

Family Dentistry You Can Rely On



www.familysmile.co.uk

Satisfaction rating:
more than 99%

100% of patients
asked would
recommend
us to family
& friends

Quote 'Villager' for a 50% discount on a full New Patient Examination
with x-rays for just £39.50. Telephone us on **01453 827474**



The
GEORGE
Veterinary Group

www.georgevetgroup.co.uk

TETBURY

23 Church Street

Tel: 01666 503531

MALMESBURY

18-20 High Street

Hospital : **01666 823165**

Equine Clinic : **01666 826456**

Farm Vets : **01666 823035**

Avening Chairman's View

Avening-PC.gov.uk; just one year after launch, we have gone from around 800 visits, to this month's new record of a whisker under 4000! With 4 of the top 5 pages being previous editions of the Villager, it's very exciting that we will now be able to post the latest edition as soon as it is published for the whole world to see. Use the links on the site if you have any ideas, or would like your event, club or organisation featured.

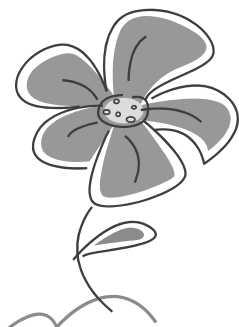
After completing the Parish Clerk's 'annual' appraisal last month, we started mulling over how we do things at the Parish Council, and realised that it probably hasn't changed a great deal since the 1950's! We pondered how many people know what a Parish Clerk does; indeed, how many people know what the PC or individual councillors do – probably not that many. So as an introduction, we are going to include a series of short profiles for these roles in the coming months, and hopefully generate interest to attract potential new councillors in May's elections. We also started to think about how we can do things differently to make us more relevant to our 21st century community, and may well try a few new ideas in the months ahead. Watch this space.

The first of our current projects is launching – A Defibrillator awareness meeting is scheduled for 7.30pm on 1st December at Memorial Hall. We have also started the process of replacing the missing parts on our pumps – a manufacturer has been lined up, and an inventory will be completed soon so that the best parts can be replicated to go on the incomplete units. A short run of walks brochures has been re-printed, but the walks and points of interest are on the list for an update soon.

When considering your New Year's resolutions, see if you can find a little time to put something back into Avening – It's the people who make the difference, and there are many worthy causes (just flick through the website for details) that will always be grateful for a bit of time and additional support.

Have a wonderful Christmas, and a happy and prosperous New Year.

Tony Slater, Chairman, Avening Parish Council



Avening Open Gardens 2015

Would you be interested in joining us in the planning stage?

If so, call Marilyn Jones on 835820 or Anthea Beszant on 835287



Avening Parish Council

NEW PLANNING APPLICATIONS

14/04224/FUL:Wingfield, 11 Hampton Hill, Avening, Tetbury, Gloucestershire, GL8 8N

Proposed new dwelling and detached garage

14/04703/FUL:Avening Mill, Mill Lane, Avening, Tetbury, Gloucestershire, GL8 8PD

Alterations and extension to existing cottage

14/04704/FUL: Avening Mill, Mill Lane, Avening, Tetbury, Gloucestershire, GL8 8PD

Alterations and extension in the conversion of part ground floor of Avening Mill to one residential unit (Unit 1)

14/04705/FUL: Avening Mill, Mill Lane, Avening, Tetbury, Gloucestershire, GL8 8PD

Conversion of former cart shed to one dwelling

TREE WORKS

14/05041/TCONR: Church Farm, Point Road, Avening, Tetbury, Gloucestershire, GL8 8ND

T1 Acer, reduce the crown by 3.5m from the top and 2m from the sides and merge to produce a rounded and symmetrical shape. Raise the crown to provide 2m ground clearance.

PLANNING DECISIONS

14/02646/LBC: Land Adjacent To 11 High Street, Avening, Gloucestershire
Temporary removal of listed water pump and re-installation within a replacement recessed inset within front elevation of new live/work unit (approved under 13/03106/FUL).

Withdrawn 28 October

For more information or to view planning documents go to: <http://www.cotswold.gov.uk>

Donations made at the November Meeting

The Parish Council agreed to pay :

Citizens Advice Bureau £50; Stroud Valleys Project £25; Corinium Talking News £25

Budget Planning

The Parish Council is beginning to plan the budget for 2015 – 2016. If your organisation will be looking for funding next year then contact the Parish Council **NOW** so we can ensure that funds will be available.

CHRISTMAS AND NEW YEAR WASTE COLLECTION DATES

Cotswold District Council's waste and recycling collection service provider, Ubico Ltd, will **not** be making collections on Thursday 25, Friday 26 December and also Thursday 1 January.

However, the crews will be working on Saturday 27 December and Saturday 3 and 10 January to catch up, and the revised collection schedule will be as follows:

Week commencing Monday 22 December 2014

NORMAL DATE COLLECTION REVISED DATE

Friday 26 Dec 2014 Will move to Mon 29 Dec 2014

Friday 2 Jan 2015 Will move to Mon 5 Jan 2015

Friday 9 Jan 2015 Will move to Saturday 10 Jan

Collection schedule will return to normal on the week beginning Monday 12 January 2015

As usual, there will be a 'side waste amnesty' for every household's first full collection after Christmas Day (i.e. full collection of household waste plus recycling). Residents will be able to leave out additional amounts of non-recyclable waste in bin liners next to their grey wheeled bin/beige refuse bags. Please place all containers at the kerbside by 7 am so we can ensure that everything is picked up.

WARM AND WELL

Cotswold District Council is working with Severn Wye Energy Agency to help people improve the energy efficiency of their homes and reduce their fuel bills. Severn Wye manages Warm and Well, the Cotswold District Council approved energy efficiency advice scheme.

For more information, please call or email the Warm and Well team:

0800 500 3076 (the free Warm and Well advice line)

warmandwell@severnwyenergy.org.uk



Emergency monitoring and contact service offers 24 hour support, 365 days a year to vulnerable members of the community.

FOR MORE INFORMATION contact the team on 01594 812505, or alternatively email cotswoldcareline@fdean.gov.uk or visit the website www.cotswoldcareline.co.uk. The friendly staff will be able to

answer any questions you may have and can offer a no obligation free demonstration in residents own homes.

Next Parish Council Meeting

Will be held on **Thursday, 18 December 2014 at 7.30 pm in the Memorial Hall**. Parish Council meetings are usually held on the third Thursday of the month. **All Are Welcome.**

www.avening-pc.gov.uk

The Parish Council address is:

*Caroline Braidwood, Parish Clerk, 77 Pheasant Way, Cirencester,
Gloucestershire GL7 1BQ*

Tel: 01285 380041 Email: parishclerk@avening-pc.gov.uk

Dates for your Diary

Tuesday 2nd December	Cherington Parish Council Meeting	Village Hall	6.30pm
Wednesday 3rd December	Over 60s Christmas Lunch	Avening Social Club	12.30pm
Saturday 6th December	Cherington Christingle service followed by Christmas Tree Light up	Cherington Church then Village Green	5.00pm
Sunday 7th December	Children's Christmas Party	Avening Church	3-5.00pm
Sunday 14th December	Santa comes to Avening	All around the village	From 5.00pm
Wednesday 17th December	Cinema Club	Avening Social Club	7.30pm
Thursday 18th December	Avening Parish Council Meeting	Memorial Hall	7.30pm
Friday 19th December	Carols with Avening Angels	The Bell and Queen Matilda	From 7.00pm
Wednesday 24th December	Crib Service	Avening Church	4.00pm
Tuesday 6th January	Youth Club	Memorial Hall	6.15pm

Cherington Parish Council

NEW PLANNING APPLICATIONS

14/02911/FUL: The Gallops, Grove Park, Cherington Tetbury

Proposal: Change of use over agricultural land for all weather gallop

PLANNING DECISIONS

14/03741/FUL: Trouble House Inn, Tetbury Road, Culkerton – Erection of single storey rear extension -

Permit

For further information and details of planning applications please visit planning@cotswold.gov.uk

Grants Available

Gloucestershire County Council has a grant available for communities and Parish Councils to help increase a range of activities and opportunities for children and young people aged 5 to 19 years old. This is called the Children's Activity Fund.

Visit www.gloucestershire.gov.uk/childrensactivityfund for details.

There's also a GCC Healthy Together grant towards activities such as road safety, older people and tackling obesity.

Christmas Tree Event

Don't forget to come along to the annual turning on of the Christmas Tree lights on **Saturday 6th December**, on the village green There will be a Christingle Service in St Nicholas church at 5pm followed by the blessing of the tree at approximately 5.30pm, prior to the lights being switched on. Mulled wine and festive nibbles in the Village Hall afterwards!

Winter weather - Highways Arrangements

If there is snow and the pavements need gritting, then please contact Cllr Henry Arden who holds some stocks of grit for and is responsible for gritting pavements.

Dates for Parish Council meetings for 2015 will be available in the next edition of The Villager. All residents of the Parish are welcome to attend parish meetings. If you have any concerns, issues, queries or comments you would like to make relating to the Parish then please don't hesitate to contact the Parish Clerk – Frances Ashfield on 01453 767384 or via email at cheringtonparishcouncil@yahoo.co.uk

Useful Telephone Numbers

Avening Parish Council Clerk	Caroline Braidwood	01285 380041
Cherington Parish Council Clerk	Frances Ashfield	01453 767384
Cotswold District Councillor	Jim Parsons	01453 836596
Avening Sunday School / Messy church	Doreen Pierce Elizabeth Buchanan	01453 835090 01453 833016
Avening Tower Captain	David Govier	01453 882914
Avening Primary School	Jane Rushton	01453 833191
Avening Playgroup	Debbie Brown	01453 832695
Avening Youth Club	Cassie Vickery	01453 834182
Avening Village Agent	Aileen Bendall	07810-630156
A and C Cricket Club	Derrick Ind	01453 835752
Over 60s Lunch Club	Christine Howell	01453 833246
Avening Silver Band	Jim Hill	01453 834438
Friends of Avening School	Jo Missenden	01453 833688
Cherington Village Hall	Beryl Milsom	01285 841248
Avening Memorial Hall		07583 073604
Avening Group Oil Coordinator	Frances Lindley FLndly4@aol.com	01453 835115
Tetbury Hospital		01666 502336
Avening History Project	Fred Vening fred@fvening.fsnet.co.uk	01285 850624
Stroud Hospital	Reception	3000 421 8080
Women's Institute	Maisie Stanton	01453 834679
Avening Book Club	Kristiane Maseyk	01453 836515

Horse Box and trailer Servicing

FROM
only
£70
+vat

INCLUDES:

- Check operation and lubricate steadies if fitted
- Check condition of chassis and attachment to body
- Check tyres and tyre pressures including the spare wheel
- Check bearings and brake shoes, clean and adjust
- Check operation of all ramps (& groom's door if relevant)
- Check security of all catches & handles
- Check coupling head
- Check breakaway cable
- Lubricate overrun piston
- Check handbrake operation
- Check and lubricate jockey wheel
Brake rods, cables and supports
- Torque wheel nuts / bolts
- Check suspension assemblies
- Check condition of trailer floor
- Check road lights
- Check all 12v plugs & cables
- Check exterior body panels



for free, friendly, local advice
give us a call

01453 832871

info@auto-bodytech.co.uk

www.auto-bodytech.co.uk



Inchbrook Trading Estate, (A46) Bath Road, Nailsworth, Stroud, GL5 5EY



Queen Matilda

Real Ale Real Food Real Fires

Open lunchtimes and evenings: Wednesday to Sunday

NOW TAKING BOOKINGS FOR OUR SPECIAL CHRISTMAS MENU

Star Lane, Avening, Glos, GL8 8NT

Telephone 01453 350305 Website: queenmatildatavern.co.uk

Email: trulockes@hotmail.co.uk

B&B rooms available soon - please check our website for updates

The Bell at Avening



a traditional British pub serving a great selection of real ales and food



Saturday Nights
2 main courses & a bottle of wine £25

SOME OF OUR MENU ITEMS...	
DEEP FRIED BRIE WITH CRANBERRY SAUCE	4.95
PRAWN COCKTAIL	5.95
PATE WITH REDCURRANT JELLY AND WARM TOAST	4.45
TODAY'S HOMEMADE SOUP	3.95

HAM, EGG AND CHIPS	8.95
MUSHROOM STROGANOFF WITH RICE	8.95
BAURGERS & MASH	8.95
TAGLIATELLE WITH ROASTED VEGETABLES AND TOMATO SAUCE	8.95
THAI CHICKEN CURRY WITH RICE	9.95
SCAMPPI AND CHIPS	9.95
RUMP STEAK WITH PEPPER SAUCE	11.95

Opening times:

Mon & Tues: 5.30pm - 11pm

Wed - Sat: 12 noon - 2pm & 5.30pm - 11pm

Sun: 12 noon - 10.30pm

Food served from Tuesday evening to Sunday lunchtime

Call us on: **01453 836422**

www.thebellinnavening.co.uk